

Product datasheet for RC224890

SCRIBBLE (SCRIB) (NM_015356) Human Tagged ORF Clone

Product data:

Product Type:	Expression Plasmids
Product Name:	SCRIBBLE (SCRIB) (NM_015356) Human Tagged ORF Clone
Tag:	Myc-DDK
Symbol:	SCRIB
Synonyms:	CRIB1; SCRIB1; SCRIB1; Vartul
Vector:	pCMV6-Entry (PS100001)
E. coli Selection:	Kanamycin (25 ug/mL)
Cell Selection:	Neomycin
ORF Nucleotide Sequence:	>RC224890 representing NM_015356 Red=Cloning site Blue=ORF Green=Tags(s)

TTTTGTAATACGACTCACTATAGGGCGCCGGGAATTCGTCGACTGGATCCGGTACCGAGGAGATCTGCC
GCCGCGATCGCC

ATGCTCAAGTGCATCCCCTGTGGCGTGCAACCGGCACGTGGAGTCGGTGGACAAGCGGCACTGTTCCG
TGCAGGCCGTGCCGGAGGAGATCTACCGCTACAGCCGACGCTGGAGGAGCTGCTGCTCGACGCCAACCA
GCTGCGCGAGCTGCCAAGCCTTTTTCCGGCTGCTGAACTTGGCAAGCTGGGCTGAGCGACAACGAG
ATCCAGCGGTTGCCTCCCGAGGTGGCCAACTTCATGCAGCTGGTGGAGCTGGACGTGTCGGGAACGATA
TCCTGAGATCCCGGAGAGCATCAAGTCTGCAAGGCTCTGGAGATCGCGGACTTCAGCGGGAACCCCT
CTCCAGGCTCCCTGATGGCTTCACTCAGCTGCGCAGCCTGGCTCACCTGGCCCTGAATGATGTGTCTCTG
CAGGCACTGCCGGGGACGTGGGCAACCTCGCCAACTGGTGACCTGGAGCTCCGGGAGAACCTGCTCA
AGTCCCTGCCAGCGTCCCTGTCAATTTCTGGTCAAGCTGGAACAGCTGGATCTGGGAGGCAACGATCTGGA
AGTGTGCCAGACTCTGGGGCTCTGCCAATCTTCGGGAGCTGTGGCTTGACCGGAACAGCTGTCA
GCACTGCCCCGGAGCTCGGGAACCTGCGGCGCCTGGTGTGCCTGGACGTGTCGAAAACCGGCTGGAGG
AGCTGCCTGTGAGCTCGGCGGGCTGGTGTGCTCACTGACCTGCTGTCCAGAACCTGCTGCGGAG
GCTGCCCGACGGCATCGGTCAGCTGAAGCAGCTATCCATCCTAAAGGTAGACCAGAATCGGCTGTGCGAG
GTGACTGAGGCCATCGGGGACTGTGAGAACCTCTGAGCTGATCCTCACGGGAACTGCTGATGGCCC
TGCCCCGCTCCCTGGGAAAGCTGACTAAGCTGACCAACCTCAACGTGGACCGGAACACCTCGAGGGCT
GCCGCCGAGATCGGGGCTGTGTGGCACTCAGCGTCTCTCCTTGAGGGACAACCGCTGGCCGTCTG
CCACCAGAGCTGGCCACACGACAGAGCTGCACGTGCTGGACGTGGCGGGAAACCGCTGCAGAGTCTGC
CGTTCGCGCTCACCCACCTCAATCTCAAGGCCCTGTGGCTGGCAGAGAACCAGGCGCAGCCCATGCTCCG
GTTCCAGACGGAGGATGATGCCCGACCGGCGAGAAGGTGCTCACCTGCTACTTGCTGCCCGCAGAGCC
CCACCCAGCCTCGAGGATGCTGGGCGAGGGGAGCCTCTCGGAGACCTGGAGCGATGCCCGCCGAGCC
GGTCCAGCGTATCCAGTTCCTGGAGGCCCATAGGTGATGAGGACGCTGAGGAAGCTGCAGCTGAGAA
GCGGGGCTACAGCGCCGGGCCACACCTCACCCAGCGAGCTCAAGGTGATGAAGAGGAGCATCGAGGGG
CGGCGGAGCGAGGCTGCCCTTGCCAGCCAGACTCTGGTTCGCCCTTGCTGCAGAGGAGGAGAAGCGGC



View online »

TGAGTGCCGAGTCTGGCCTGAGTGAAGACTCTCGCCATCTGCCAGCACAGTCTCTGAGGCTGAGCCGA
 GGGCCCGTGGCTGAGGCACAGGGTGGGAGCCAGCAGGAAGCCACGACTGCTGGCGGGGAGGAAGACGCC
 GAAGAGGACTACCAGGAGCCACGGTGCATTTTCAGAGGACGCACTGCTGCCCGGGATGACAGGGAGA
 TCGAGGAGGGGACGCTGAGGCCCTGGACCTGCCAGGCGGGAGGCAGCGGCTCATCCGAAGGACAC
 ACCTACTACAAAAGCACTTCAAGATCTCAAGCTGCCCCAGCCGAGGCCGTTGTGGCTCTGCTGCAG
 GGCATGCAGCTGATGGGAGGGCCCTGTGGCTCCCGGGGCTGGCAATGGCCCCACGACCCCTGGG
 CTCTCGGGCCAGAAGGAGGAGGAGGAGGAAGAGGGTAGTCCTCAGGAGGAGGACAAGGAGGGGGCGTGGTTCT
 GGAGAAAACAGGGCTGAAGAGGAAGAGGCCAGCACTGAGGAGGAGGACAAGGAGGGGGCGTGGTTCT
 GCGCCCTCTGTCAAGGGAGTGTGTTTTGACCAGGCCAATAACCTGCTGATAGAGCCTGCTCGATTGAGG
 AGGAAGAGCTGACCCTACCATCTGCGCAGACTGGGGCTGGGCATCAGCATTGCGGGCGGCAAGGG
 CTCCACACCTATAAGGGGACGACGAGGGCATATTCATCTCTCGGGTGTCCGAGGAAGGCCCTGCGGCC
 CGGGCTGGAGTCCGTGTGGGTGACAAGCTCTGGAGGTGAATGGTGTGGCTCTGCAGGGCGCGAGCACC
 ACGAGGCCGTGGAGGCGCTCCGGGGGCGGCACTGCCGTGCAGATGCGAGTGTGGCGGAGCGCATGGT
 GGAGCCTGAGAACGCGGTACCATCACGCCGTGCGGCCGAGGATGATTACAGCCCCGAGAGCGGGCGG
 GGAGGGGGCTGCGCCTGCCCTGCTCCGCCCTGAGAGCCCCGGGCCCTCCGTACGCGCCAGTGGCCT
 GCCTGGCAGCAGCGAGAGGGGGCTGGGCTTACGATTGCTGGTGGGAAAGGCTCCACACCTACAGGGC
 TGGTGATGCGGGCATCTCGTCTCCCGATTGCCGAGGGCGGTGCTGCTACCGCGGGGACACTGCAG
 GTTGGGACCGCGTCTCTATTAATGGAGTGGACGTGACTGAGGCCAGGCATGACCACGCCGTCTCC
 TGCTGACCGTGCCTCCCCACCATCGCCCTGCTGTTGGAGCGGGAGGCTGGGGGCCCTTCTCTCCAG
 CCCTCTGCCACATTCCTACCCCCACCGCTGCTGTTGCCACCACCAGCATAACCACTGCCACCCCCGGG
 GTGCCTGGGTGGCGAGCCTGGCCCCAGCCTGCTGGTGCCGCGTTGGAAGGGCCATACCAAGTGGAGG
 AGATCCGTGTCGAAGAGCTGGGGGCCCTGGGGCTTAGTATTGTCGGAGGCTCCGACCATCCAGCCA
 CCGGTTTGGTGTCCAGGAGCCTGGTGTTCATCTCAAGTGTCTCCCGGGGGCTGGCGCTGCAGC
 GGCTGCGGGTGGGGACCGCATCTGGCAGTGAACGGGCAAGACGTGCGGGATGCCACGCAACAAGAA
 CAGTCAGTGCCCTGCTCCGGCCCTGCTGGAGCTGTGCTGCTGGTGGGAGGGACCCGGACCCCCGGG
 CCTACGGAACTGTGCATCCAGAAGGCACCTGGGAGAGGCTGGGCATCAGCATCCCGGGGGTGGCAGG
 GGCCACGCTGGCAACCCCGCGACCCACAGACGAGGGCATCTTCATCTCAAGGTGAGCCCCACGGGGG
 CAGCCGGGCGGACGGTGGCTGCGTGTGGTTTGGCGCTGTTGGAGGTGAACCAGCAGAGCCTGCTGGG
 CCTGACGCACGGGAGGGGTCAGCTGCTCCGAGTGTGGGCGACACCCTACCGTGTGGTCTGTGAC
 GGCTTCGAGGCCAGCACCAGCAGCCCTGGAGGTGTCCAGGTGTCATTGCCAACCCCTTTGCGGCAG
 GCATCGGCCACCGAAGCCTGGAGAGCATCTTCCATCGACCGGGAGCTGAGCCTGAGGGCCAGG
 CAAGGAGAAGGAGCTGCCTGGACAGACCCTGCACTGGGGCCCGAGGCCACAGAAGCCGAGGTGCGGGT
 CTGCAGCCCTGAAGCTGGACTACCGCGCCCTGGCCGCGGTGCCAGCGCTGGCAGCGTGCAGAGGGTAC
 CGTCTGGAGCAGCTGGAGGGAAGATGGCTGAATCTCCCTGCTCCCTAGTGGCCAGCAGCCGCCCTCCCC
 GCCTTCTCCGGATGAGCTGCCCGCAATGTGAAGCAGGCCTACAGGGCCTTCGCGGCCGTGCCACTTCT
 CACCCGCTGAGGATGCCCTGCCAGCCCCACGCCTGGGCCGTCAGCCTCCCGGAGCAGCTGTCTCT
 TCCGGGAGCGGACAGAAGTACTTTGAGCTGGAGGTGCGCGTGGCCAGGCCGAGGGCCCCCTAAGCGCGT
 GTCCTGGTGGTGTGACGACCTGCGGAAGATGCAGGAGGAGGAAGCCAGAAAACACAGCAGAAGAGA
 GCGCAGATGCTGCGGGAGCGGAGAGGCTGGGGCCGAAAGCAGGCTCGCCCTGGAGCGGAGAGCCTGG
 GCGAGGAGGAACAGGAGGATGAGCAGCCACCCTGGGCCAGCCGAGCCCCACCTCAAGGCAGAGCCCGG
 GTCCCCCGGCCCTGGGAGGTGGCGCCCGGTGCGGACGGCAAAGCTGAACGGCGCCACCAGGAGCGG
 CTGCGCGTGCAGAGTCCGGAGCCACCGGACCCGAGCGTGCCTGTCCCCTGCCGAGCTCCGGGCCCTGG
 AGGCCGAGAAGCGTGGCTGTGGAGGGCAGCCAGGATGAAGTCATTGGAACAGGACGCTCTCCGAGCACA
 GATGGTCTCAGCAGGTCCAGGAAGGCCGGGACGCGGGGGCCCTGGAGCGACTGGCCGAGGCCCT
 TCCCCTGCGCCACCCCGTCCGCCACCCTGTGGAAGACCTCGGCCCCAGACCAGCACCTCCCCGGGAC
 GCCTGTCACCGGACTTTGCTGAGGAGTTGAGTCCCTGGAACCATCTCCAGCCCTGGCCCGAGGAGGA
 GGATGGAGAAGTGGCTCTGGTGTCTTGGGAGGCGCTACCCGCGCTGTGGGCCCTGAAGATGTGGCA
 CTGTGCAGCAGCCGCGCCCGTAAGGCCTGGGCGCCGTGGCCTGGGCCCTGTGCCCTC

ACGCGTACGCGGGCGCTCGAGCAGAACTCATCTCAGAAGAGGATCTGGCAGCAAATGATATCCTGGATT
 ACAAGGATGACGACGATAAGGTTTAA

Protein Sequence: >RC224890 representing NM_015356
 Red=Cloning site Green=Tags(s)

MLKCIPLWRCNRHVESVDKRHCSLQAVPEEYRYSRSLEELLLDANQLRELKPKFFRLLNLRKLGSDNE
 IQRLPPEVANFMQLVELDVSNDIPEIPESIKFCKALEIADFSGNPLSRLPDGFTQLRSLAHLALNDVSL
 QALPGDVGNLANLVTLELRENLLKSLPASLSFLVKLEQLDLGGNDLEVLPTL GALPNLRELWLDNRQLS
 ALPPELGNLRRLLVCLDVSENRL EELPAELGGLVLLTDL LLSQNLLRRLPDGIGLQKLSILKVDQNRCE
 VTEAIGDCENLSELILTENLLMALPRSLGKLTCLNLNVDRNHLEALPPEIGGCVALSVLSLRDNR LAVL
 PPELAHTTELHVLDVAGNRLQSLPFALTHLNLKALWLAENQAQPM LRFQTEDDARTGEKVLTCYLLPQQP
 PPSLEDAGQQGSLSETWSDAPPSRVSVIQFLEAPIGDEDAEAAAAEKRLQRRATPHPSLKV MKRSIEG
 RRSEACPCQPDGSGSPLAEEKRLSAESGLSEDSRPSASTVSEAEPEGPSAE AQGGSQEQEATTAGGEEDA
 EEDYQEPTVHFAEDALLPGDDREIEEGQPEAPWTLPGGRQRLIRKDTPHYKHKFKISKLPQPEAVALLQ
 GMQPDGEGPVAPGGWHNGPHAPWAPRAQKEEEEEEGSPQEEEEEEENRAEEEEASTEEDKEGAVVS
 APSVKGV SFDQANLLIEPARIEEEELTLTILRQTGGLGISIAGGKGSTPYKGDDEGIFISRVSEEGPAA
 RAGVVRVGDKLLVNGVALQGAEHHEAVEALRGAGTAVQMRVWRERMV EPENAVTITPLRPEDDYSRERR
 GGLRLPLLPESPGPLRQRHVACLARSERGLGFSIAGGKGSTPYRAGDAGIFVSRIAEGGAHRAGTLQ
 VGDRVLSINGVDVTEARHDHAVSLLTAASPTIALLLHEREAGGPLPSPLPHSSPPTAAVATTSITTATPG
 VPGLPSLAPSLAAAALGPPYVEEIRLPRAGGPLGLSIVGGSDHSSHPPFGVQEPGVFISKVLPRLAARS
 GLRVGDRILAVNGQDVRDATHQEAVSALLRPCLELSLLVRRDPAPPGLREL CIQKAPGERLGISIRGGAR
 GHAGNPRDPTDEGIFISKVSPTGAAGRDGRLRVGLRLLLEV NQQSLLGLTHGEAVQLLRVSGDTLTVL VCD
 GFEASTDAALEVSPGVIANPFAAGIGHRNSLESISSIDRELSPEGPGKEKELPGQTLHWGPEATEAAGRG
 LQPLKLDYRALAAVPSAGSVQRPVSGAAGGKMAESPCSPSGQQPPSPSPDEL PANVKQAYRAFAAVPTS
 HPPEDAPAQPPTPGPAASPEQLSFRERQKYFELEVRVPAEQEGPPKRVSLVGADDLRKMQEEEEARKLQKQR
 AQMLREAAEAGAEARLALDGETLGEQEQDEQPPWASPSPTSRQSPASPPPLGGGAPVRTAKAERRHQER
 LRVQSPEPPAPERALSPALRALAEAKRALWRAARMKSL EQDALRAQMVLSRSQEGRGRGPLERLAEAP
 SPAPTSPPTVEDLGPQTSTSPGR LSPDFAEELRSLESPSPGPQEEDGEVALVLLGRPSGAVGPEDVA
 LCSSRRPVRPGRRLGPVPS

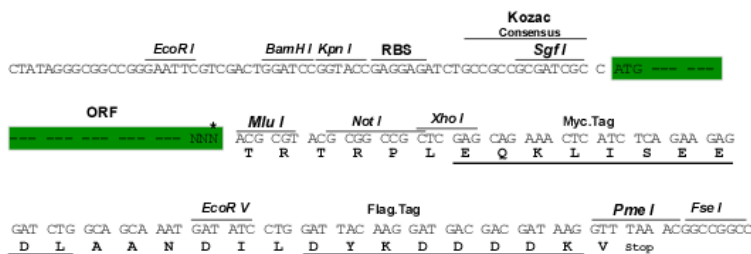
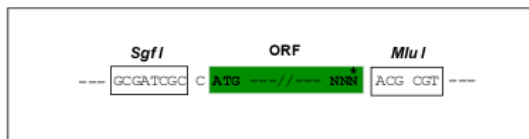
TRTRPLEQKLI SEEDLAANDILDYKDDDDKV

Restriction Sites:

SgfI-MluI

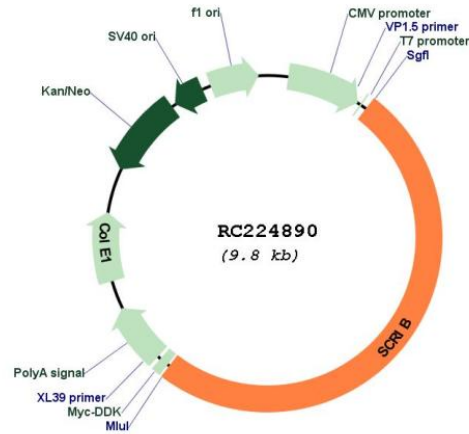
Cloning Scheme:

Cloning sites used for ORF Shuttling:



* The last codon before the Stop codon of the ORF

Plasmid Map:



ACCN: NM_015356

ORF Size: 4890 bp

OTI Disclaimer: The molecular sequence of this clone aligns with the gene accession number as a point of reference only. However, individual transcript sequences of the same gene can differ through naturally occurring variations (e.g. polymorphisms), each with its own valid existence. This clone is substantially in agreement with the reference, but a complete review of all prevailing variants is recommended prior to use. [More info](#)

OTI Annotation: This clone was engineered to express the complete ORF with an expression tag. Expression varies depending on the nature of the gene.

Components: The ORF clone is ion-exchange column purified and shipped in a 2D barcoded Matrix tube containing 10ug of transfection-ready, dried plasmid DNA (reconstitute with 100 ul of water).

Reconstitution Method:

1. Centrifuge at 5,000xg for 5min.
2. Carefully open the tube and add 100ul of sterile water to dissolve the DNA.
3. Close the tube and incubate for 10 minutes at room temperature.
4. Briefly vortex the tube and then do a quick spin (less than 5000xg) to concentrate the liquid at the bottom.
5. Store the suspended plasmid at -20°C. The DNA is stable for at least one year from date of shipping when stored at -20°C.

RefSeq: [NM_015356.4](#), [NP_056171.3](#)

RefSeq Size: 5201 bp

RefSeq ORF: 4893 bp

Locus ID: 23513

UniProt ID: [Q14160](#)

Cytogenetics: 8q24.3

MW: 174.9 kDa

Gene Summary: This gene encodes a protein that was identified as being similar to the *Drosophila* scribble protein. The mammalian protein is involved in tumor suppression pathways. As a scaffold protein involved in cell polarization processes, this protein binds to many other proteins. The encoded protein binds to papillomavirus E6 protein via its PDZ domain and the C-terminus of E6. Two alternatively spliced transcript variants that encode different protein isoforms have been found for this gene. [provided by RefSeq, Nov 2011]