

Product datasheet for RC224885L2

OSTF1 (NM_012383) Human Tagged Lenti ORF Clone

Product data:

Product Type: Expression Plasmids

Tag: mGFP

Symbol: OSTF1

Synonyms: bA235O14.1; OSF; SH3P2

Mammalian Cell: None

Selection:

Vector: pLenti-C-mGFP (PS100071)

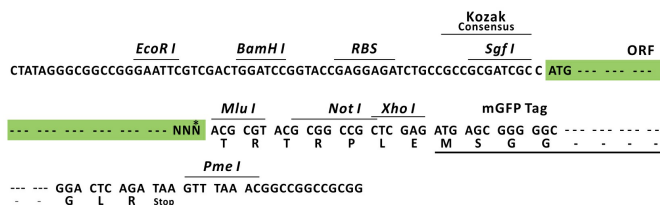
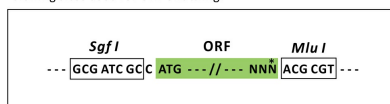
E. coli Selection: Chloramphenicol (34 ug/mL)

ORF Nucleotide Sequence: The ORF insert of this clone is exactly the same as(RC224885).

Restriction Sites: SgfI-MluI

Cloning Scheme:

Cloning sites used for ORF Shuttling:



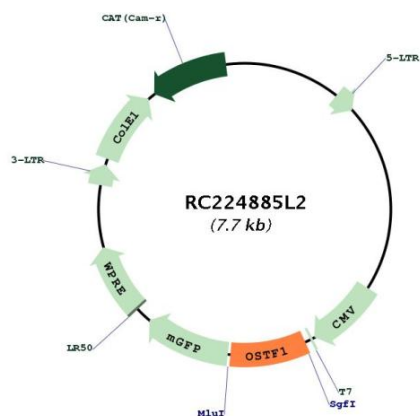
* The last codon before the Stop codon of the ORF.

ACCN: NM_012383

ORF Size: 642 bp



OTI Disclaimer:	The molecular sequence of this clone aligns with the gene accession number as a point of reference only. However, individual transcript sequences of the same gene can differ through naturally occurring variations (e.g. polymorphisms), each with its own valid existence. This clone is substantially in agreement with the reference, but a complete review of all prevailing variants is recommended prior to use. More info
OTI Annotation:	This clone was engineered to express the complete ORF with an expression tag. Expression varies depending on the nature of the gene.
Components:	The ORF clone is ion-exchange column purified and shipped in a 2D barcoded Matrix tube containing 10ug of transfection-ready, dried plasmid DNA (reconstitute with 100 ul of water).
Reconstitution Method:	<ol style="list-style-type: none"> 1. Centrifuge at 5,000xg for 5min. 2. Carefully open the tube and add 100ul of sterile water to dissolve the DNA. 3. Close the tube and incubate for 10 minutes at room temperature. 4. Briefly vortex the tube and then do a quick spin (less than 5000xg) to concentrate the liquid at the bottom. 5. Store the suspended plasmid at -20°C. The DNA is stable for at least one year from date of shipping when stored at -20°C.
Note:	Plasmids are not sterile. For experiments where strict sterility is required, filtration with 0.22um filter is required.
RefSeq:	NM_012383.3
RefSeq Size:	901 bp
RefSeq ORF:	645 bp
Locus ID:	26578
UniProt ID:	Q92882
Cytogenetics:	9q21.13
Domains:	SH3, ANK
MW:	23.6 kDa
Gene Summary:	Osteoclast-stimulating factor-1 is an intracellular protein produced by osteoclasts that indirectly induces osteoclast formation and bone resorption (Reddy et al., 1998 [PubMed 10092216]).[supplied by OMIM, Mar 2008]

Product images:

Circular map for RC224885L2