

Product datasheet for **RC224875**

KCNG3 (NM_172344) Human Tagged ORF Clone

Product data:

Product Type:	Expression Plasmids
Product Name:	KCNG3 (NM_172344) Human Tagged ORF Clone
Tag:	Myc-DDK
Symbol:	KCNG3
Synonyms:	KV6.3; KV10.1
Mammalian Cell Selection:	Neomycin
Vector:	pCMV6-Entry (PS100001)
E. coli Selection:	Kanamycin (25 ug/mL)



[View online »](#)

ORF Nucleotide Sequence:

>RC224875 representing NM_172344
 Red=Cloning site Blue=ORF Green=Tags(s)

TTTTGTAATACGACTCACTATAGGGCGGCCGGGAATTCGTCGACTGGATCCGGTACCGAGGAGATCTGCC
 GCCCGCATCGCC

ATGACCTTCGGGCGCAGCGGGCGCCCTCGGTGGTGTCTGAACGTGGGCGGCGCCCGTATTCGCTGTCCC
 GGGAGCTGCTGAAGGACTTCCCGCTGCGCCGCGTGAGCCGGCTGCACGGCTGCCGCTCCGAGCGCGACGT
 GCTCGAGGTGTGCGACGACTACGACCGCGAGCGCAACGAGTACTTCTTCGACCGGCACTCGGAGGCCCTC
 GGCTTCATCCTGCTCTACGTGCGCGGCCACGGCAAGCTGCGCTTCGCGCCGCGGATGTGCGAGCTCTCT
 TCTACAACGAGATGATCTACTGGGGCTGGAGGGCGCGCACCTCGAGTACTGCTGCCAGCGCCGCTCGA
 CGACCGCATGTCCGACACCTACACCTTCTACTCGGCCGACGAGCCGGGCGTGTGGGCCGCGACGAGGCG
 CGCCCCGGCGGGCCGAGGCGGCTCCCTCCAGGCGCTGGCTGGAGCGCATGCGGCGGACCTTCGAGGAGC
 CCACGTCGTCGTCGGCCGCGAGATCCTGGCTAGCGTGTGCGTGGTGTTCGTGATCGTGTCCATGGTGGT
 GCTGTGCGCCAGCACGTTGCCGACTGGCGCAACGCAGCCGCGACAACCGCAGCCTGGATGACCGGAGC
 AGGATAATTGAAGCTATCTGCATAGGTTGGTTCCTGCGGAGTGCATCGTGAGGTTCAATTGTCTCCAAAA
 ACAAGTGTGAGTTTGTCAAGAGACCCCTGAACATCATTGATTTACTGGCAATCACGCCGATTACATCTC
 TGTGTTGATGACAGTGTTTACAGGCGAGAACTCTCAACTCCAGAGGGCTGGAGTACACCTTGGGGTACTT
 AGAATGATGAGGATTTTTGGGTGATTAAGCTTGCCCGTCACTTCATTGGTCTTCAGACACTCGGTTTGA
 CTCTCAAACGTTGCTACCGAGAGATGGTTATGTTACTTGTCTTCATTTGTTGCCATGGCAATCTTTAG
 TGCACCTTCTCAGCTTCTGAACATGGGCTGGACTGGAACATCCAACAAGGACTTTACCAGCATTCTCT
 GCTGCCTGCTGGTGGGTGATTATCTCTATGACTACAGTTGGCTATGGAGATATGTATCCTATCACAGTGC
 CTGGAAGAATTCTGGAGGAGTTGTGTTGTGTCAGTGAATTGTTCTATTGGCATTACCTATCACTTTTAT
 CTACCATAGCTTTGTGCAGTGTTATCATGAGCTCAAGTTTAGATCTGCTAGGTATAGTAGGAGCCTCTCC
 ACTGAATTCCTGAAT

ACGCGTACGCGGCCGCTCGAGCAGAACTCATCTCAGAAGAGGATCTGGCAGCAAATGATATCCTGGATT
 ACAAGGATGACGACGATAAGGTTTAA

Protein Sequence:

>RC224875 representing NM_172344
 Red=Cloning site Green=Tags(s)

MTFGRSGAASVVLNVGGARYSLSRELLKDFPLRRVSRLHGCRSERDVLVCCDDYDRERNEYFFDRHSEAF
 GFILLVYRGHGKLRFAPRMCELSFYNEMIIYWGLEGAHLEYCCQRRLLDDMSDITYFYSADEPGVLRDEA
 RPPGAEAAPSRRLERMRTFEEPTSSLAQILASVSVFVIVSMVVLCASTLPDWRNAAADNRSLLDRS
 RIIIEAICIGWFTAECIVRFIVSKNKCEFVKRPLNIIDLLAITPYIISVLMVFTGENSQLQRAGVTLRVL
 RMMRIFWVIKLRHF IGLQTLGLTLKRCYREVMMLLVFICVAMAI FSALSQLEHGLDLETSNKDFTSIP
 AACWVVIISMTTVGYGDMYPITVPGRILGGVVCVSGIVLLALPITFIYHSFVQCYHELKFRSARYSRSL
 TEFLN

TRTRPLEQKLISEEDLAANDILDYKDDDDKV

Chromatograms:

https://cdn.origene.com/chromatograms/mk6478_f07.zip

Restriction Sites:

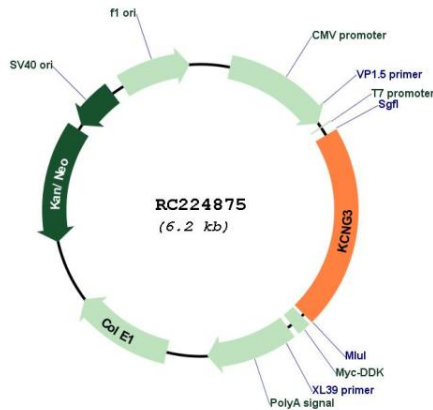
Sgfl-Mlul

Protein Families: Druggable Genome, Ion Channels: Other, Transmembrane

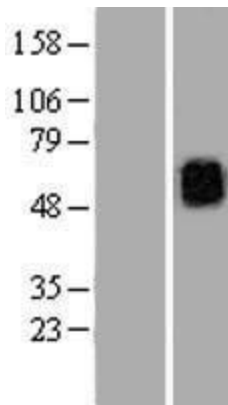
MW: 48.4 kDa

Gene Summary: Voltage-gated potassium (Kv) channels represent the most complex class of voltage-gated ion channels from both functional and structural standpoints. Their diverse functions include regulating neurotransmitter release, heart rate, insulin secretion, neuronal excitability, epithelial electrolyte transport, smooth muscle contraction, and cell volume. This gene encodes a member of the potassium channel, voltage-gated, subfamily G. This member is a gamma subunit functioning as a modulatory molecule. Alternative splicing results in two transcript variants encoding distinct isoforms. [provided by RefSeq, Jul 2008]

Product images:



Circular map for RC224875



Western blot validation of overexpression lysate (Cat# [LY406714]) using anti-DDK antibody (Cat# [TA50011-100]). Left: Cell lysates from untransfected HEK293T cells; Right: Cell lysates from HEK293T cells transfected with RC224875 using transfection reagent MegaTran 2.0 (Cat# [TT210002]).