

## Product datasheet for **RC224869**

### **Apc6 (CDC16) (NM\_001078645) Human Tagged ORF Clone**

#### **Product data:**

Product Type:	Expression Plasmids
Product Name:	Apc6 (CDC16) (NM_001078645) Human Tagged ORF Clone
Tag:	Myc-DDK
Symbol:	Apc6
Synonyms:	ANAPC6; APC6; CDC16Hs; CUT9
Mammalian Cell Selection:	Neomycin
Vector:	pCMV6-Entry (PS100001)
E. coli Selection:	Kanamycin (25 ug/mL)



[View online »](#)

**ORF Nucleotide Sequence:**

>RC224869 representing NM\_001078645  
 Red=Cloning site Blue=ORF Green=Tags(s)

TTTTGTAATACGACTCACTATAGGGCGGCCGGAATTCGTCGACTGGATCCGGTACCGAGGAGATCTGCC  
 GCC**CGCATCGCC**

ATGAACCTAGAGCGGCTGCGGAAGCGCGTCCGGCAGTACCTCGACCAGCAACAGTATCAAAGTGCTCTAT  
 TTTGGGCAGATAAAGTAGCTTCACTCTCTCGTGAAGAACCCAGGACATCTATTGGTTGGCTCAATGTCT  
 TTACCTGACAGCACAATATCACAGAGCCGCCATGCACCTTCGGTACGAAAACCTGGACAAATTTGATGAA  
 GCATGTCGTTACCTTGCAGCTAGGTGCCATTATGCTGCAAAAGAGCACCAGCAGGCCCTTGATGTTCTTG  
 ACATGGAAGAGCCCATCAATAAAAGATTATTTGAAAAACTTGAAGGATGAAAGTGGCTTCAAAGATCC  
 CTCCAGCGACTGGGAAATGTCACAGTCTCAATAAAGAGTTCTATCTGTCTTCTACGCGGAAAAATCTAT  
 GATGCTCTAGATAACCGAACCTGGCTACCTACAGCTACAAGAAGCTTTGAAGCTTGATGTCTACTGTT  
 TTGAAGCGTTCGATCTTTAACATCACATCACATGCTGACAGCACAAGAAGAAAAAGAACTTCTTGAATC  
 ACTACCCCTTAGCAAGCTGTGTAATGAAGAACAGGAATTGCTGCGTTTTCTATTTGAGAACAATGAAA  
 AAATAATAAGCCTAGTGAAACGGTCATCCCTGAATCTGTAGATGGCTTGAAGAGAATCTGGATGTGG  
 TAGTGTCTTTAGCTGAGAGACATTATTAACTGTGATTTAAAAATGTGCTACAAGCTTACTTCTGTAGT  
 AATGGAGAAAGATCCTTTCCATGCAAGTTGTTTACCTGTACATATAGGGACGCTTGTAGAGCTGAATAAA  
 GCCAATGAACTTTTCTATCTTTCTATAAACTGGTGGATTTATATCCTAGTAATCCTGTGTCTTGGTTTG  
 CAGTGGGATGTTACTATCTCATGGTCCGTCATAAAAAATGAACATGCCAGAAGATATCTCAGCAAAGCCAC  
 AACACTTGAGAAAACCTATGGACCTGCATGGATAGCCTATGGACATTCATTTGCGGTGGAGAGTGAGCAC  
 GACCAAGCGATGGCTGCTTACTTACAGCAGCACAGCTGATGAAAGGGTGTCAATTTGCCTATGCTGTATA  
 TTGGATTAGAATATGGTTTGACCAATAACTCAAACTAGCTGAAAGGTTCTTCAGCCAAGCTCTGAGCAT  
 TGCACCGGAAGACCCCTTTTGTATGCATGAGTGGCGTGGTTCATTTAGAATGGAGAATGGAAAAACA  
 GCCGAAAAATGGTTTCTGATGCTTTGGAAAAATTAAGCAATTGGGAACGAGGTAACAGTTGACAAAT  
 GGGAACCTTTGTTGAACAACCTGGGGCATGTCTGCAGAAAACCTAAAAAGTATGCTGAGGCCTGGATTA  
 CCACCGTCAGGCACTGGTGTGATTCTCAGAACGCATCCACCTACTCTGCTATTGGATATATCCACAGT  
 CTGATGGGCACTTTGAAAATGCTGTGGACTACTTCCACACAGCCCTGGTCTTAGGCGAGATGATACAT  
 TTTCTGTTACAATGCTTGGTTCATGCATCGAAATGTACATTGGTATTCTGAAGCTTATATCGGAGCAGA  
 CATTAAAGACAAATAAAATGTTATGACTTTGATGTGCATACAATGAAGACACTAAAAACATTATTTCA  
 CCTCCGTGGGATTTAGGGAATTTGAAGTAGAAAAACAGACTGCAGAAGAAACGGGGCTTACGCCATTGG  
 AAACCTCAAGGAAAACCTCAGATTCCAGACCTTCTTGGAAAGAACTTTGAAATGAAATGAATGAAAG  
 TGACATGATGTTAGAGACATCTATGTCAGACCACAGCAGC

**ACGCGT**ACGCGGCCGCTCGAGCAGAAACTCATCTCAGAAGAGGATCTGGCAGCAAATGATATCCTGGATT  
 ACAAGGATGACGACGATAAGGTTTAA

**Protein Sequence:**

>RC224869 representing NM\_001078645  
 Red=Cloning site Green=Tags(s)

MNLERLRKRVRYLDQQYQYQSALFWADKVASLSREEPQDIYWLAQCLYLTAQYHRAAAHALRSRKLDKLYE  
 ACRYLAARCHYAAKEHQALDVLDMEEPINKRLFKEYLKDESGFKDPSSDWEMSQSSIKSSICLLRGKIY  
 DALDNRTLATYSYKEALKLDVYCFEAFDLLTSHHMLTAQEEKELLESPLSKLCNEEQELLRFLFENKLL  
 KYNKPSETVIPESVDGLQENLDVVVSLAERHYNCDFKMCYKLSVVMKDPFHASCLPVHIGTLVELNK  
 ANELFYLSHKLVDLYPSNPVSWFVAVGCYLLMVGHKNEHARRYLSKATTLKTYGPAWIYGHFSFAVESEH  
 DQAMAAYFTAQLMKGCHLPMLYIGLEYLGNNSKLAERFFSQALSIAPEDPFVMHEVGVVAFQNGEWT  
 AEKWFLDALEKIKAIIGNEVTVDKWEPLNLGHVCRKLLKYAEALDYHRQALVLIQPNASTYSAIGYIHS  
 LMGNFENAVDYFHTALGLRRDDTFVSTMLGHCIEMYIGDSEAYIGADIKDLKCYDFDVHTMKTLLKNIIS  
 PPWDFREFEVEKQTAETGLTPLETSRKTTPDSRPSLEETFEIEMNESDMMLETSMDSHST

**TR**TRPLEQKLISEEDLAANDILDYKDDDDKV

Chromatograms: [https://cdn.origene.com/chromatograms/mg2904\\_b04.zip](https://cdn.origene.com/chromatograms/mg2904_b04.zip)  
 Restriction Sites: SgfI-MluI  
 Cloning Scheme:



ACCN: NM\_001078645

ORF Size: 1860 bp

OTI Disclaimer: The molecular sequence of this clone aligns with the gene accession number as a point of reference only. However, individual transcript sequences of the same gene can differ through naturally occurring variations (e.g. polymorphisms), each with its own valid existence. This clone is substantially in agreement with the reference, but a complete review of all prevailing variants is recommended prior to use. [More info](#)

OTI Annotation: This clone was engineered to express the complete ORF with an expression tag. Expression varies depending on the nature of the gene.

Components: The ORF clone is ion-exchange column purified and shipped in a 2D barcoded Matrix tube containing 10ug of transfection-ready, dried plasmid DNA (reconstitute with 100 ul of water).

- Reconstitution Method:
1. Centrifuge at 5,000xg for 5min.
  2. Carefully open the tube and add 100ul of sterile water to dissolve the DNA.
  3. Close the tube and incubate for 10 minutes at room temperature.
  4. Briefly vortex the tube and then do a quick spin (less than 5000xg) to concentrate the liquid at the bottom.
  5. Store the suspended plasmid at -20°C. The DNA is stable for at least one year from date of shipping when stored at -20°C.

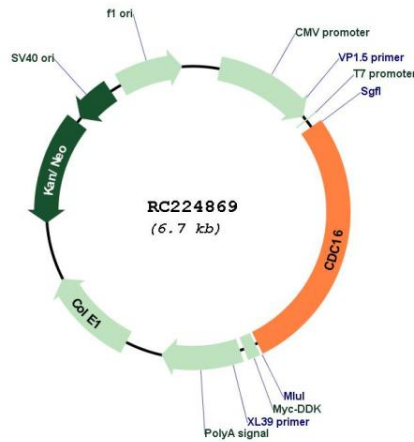
RefSeq: [NM\\_001078645.3](#)

RefSeq Size: 2317 bp

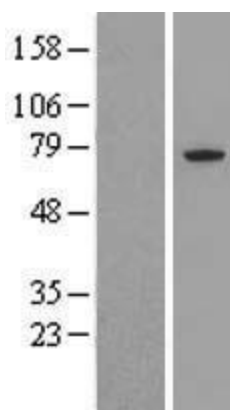
RefSeq ORF: 1863 bp

<b>Locus ID:</b>	8881
<b>UniProt ID:</b>	<a href="#">Q13042</a>
<b>Cytogenetics:</b>	13q34
<b>Protein Families:</b>	Druggable Genome
<b>Protein Pathways:</b>	Cell cycle, Oocyte meiosis, Progesterone-mediated oocyte maturation, Ubiquitin mediated proteolysis
<b>MW:</b>	71.5 kDa
<b>Gene Summary:</b>	The protein encoded by this gene functions as a protein ubiquitin ligase and is a component of the multiprotein APC complex. The APC complex is a cyclin degradation system that governs exit from mitosis by targeting cell cycle proteins for degradation by the 26S proteasome. Each component protein of the APC complex is highly conserved among eukaryotic organisms. This protein, and other APC complex proteins, contain a tetratricopeptide repeat (TPR) domain; a protein domain that is often involved in protein-protein interactions and the assembly of multiprotein complexes. Multiple alternatively spliced transcript variants, encoding distinct proteins, have been identified. [provided by RefSeq, Jan 2016]

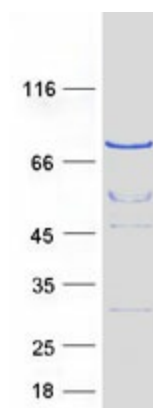
**Product images:**



Circular map for RC224869



Western blot validation of overexpression lysate (Cat# [LY421501]) using anti-DDK antibody (Cat# [TA50011-100]). Left: Cell lysates from untransfected HEK293T cells; Right: Cell lysates from HEK293T cells transfected with RC224869 using transfection reagent MegaTran 2.0 (Cat# [TT210002]).



Coomassie blue staining of purified CDC16 protein (Cat# [TP324869]). The protein was produced from HEK293T cells transfected with CDC16 cDNA clone (Cat# RC224869) using MegaTran 2.0 (Cat# [TT210002]).