

## Product datasheet for **RC224865**

### NCOA1 (NM\_147223) Human Tagged ORF Clone

#### Product data:

**Product Type:** Expression Plasmids  
**Product Name:** NCOA1 (NM\_147223) Human Tagged ORF Clone  
**Tag:** Myc-DDK  
**Symbol:** NCOA1  
**Synonyms:** bHLHe42; bHLHe74; F-SRC-1; KAT13A; RIP160; SRC1  
**Vector:** pCMV6-Entry (PS100001)  
**E. coli Selection:** Kanamycin (25 ug/mL)  
**Cell Selection:** Neomycin  
**ORF Nucleotide Sequence:** >RC224865 representing NM\_147223  
Red=Cloning site Blue=ORF Green=Tags(s)

TTTTGTAATACGACTCACTATAGGGCGGCCGGAATTCGTCGACTGGATCCGGTACCGAGGAGATCTGCC  
GCC**GCGATCGCC**

ATGAGTGGCTCGGGACAGTTCATCCGACCCTGCTAACCCAGACTCACATAAGAGGAAAGGATCGCCAT  
GTGACACACTGGCATCAAGCACGAAAAGAGGCGCAGGGAGCAAGAAAATAAATATTTAGAAGAACTAGC  
TGAGTTACTGTCTGCCAACATTAGTGACATTGACAGCTTGAGTGTAAAACCAGACAAATGCAAGATTTTG  
AAGAAAACAGTCGATCAGATACAGCTAATGAAGAGAATGGAACAAGAGAAATCAACAACATGATGACGATG  
TACAGAAATCAGACATCTCATCAAGTAGTCAAGGAGTGATAGAAAAGGAATCCTTGGGACCTCTCTTTT  
GGAGGCTTTGGATGGATTTTCTTTGTTGTAAGTGTGAAGGGAGAATTGATTTGTGTCAGAGAATGTA  
ACCAGCTACTTAGGTTACAATCAGGAGGAATTAATGAATACGAGCGTCTACAGCATACTGCACGTGGGGG  
ATCATGCAGAATTTGTGAAGAATCTGCTACCAAAATCACTAGTAAATGGAGTTCCCTGGCCTCAAGAGGC  
AACACGACGAAATAGCCATACCTTTAACTGCAGGATGCTAATTCACCTCCAGATGAGCCAGGGACCGAG  
AACCAAGAAGCTTGCCAGCGTTATGAAGTAATGCAGTGTTCCTGTGTCACAGCCAAAATCAATTCAAG  
AGGATGGAGAAGATTTCCAGTCATGCTGATTTGTATTGCAGGGGATTACCTCGGCCTCCAGCTATTAC  
GGGTGTAGAATCCTTTATGACCAAGCAAGATACTACAGGTAATAATCATCTCTATTGATACTAGTCCCTG  
AGAGCTGCTGGCAGAAGCTGGTTGGGAAGATTTAGTGAGGAAGTGCAATTTATGCTTTTTTCCAACCTCAGG  
GCAGAGAACCATCTTATGCCAGACAGCTGTTCCAAGAAGTGATGACTCGTGGCACTGCCTCCAGCCCTC  
CTATAGATTCATATTGAATGATGGGACAATGCTTAGCGCCACACCAAGTGTAACCTTTGCTACCCCTCAA  
AGTCCAGACATGCAACCTTTTCATCATGGGAATTCATATCATCGACAGGGAGCACAGTGGGCTTTCTCCTC  
AAGATGACACTAATCTGGAATGTCAATCCCCGAGTAAATCCCTCGGTCAATCCTAGTATCTCTCCAGC  
TCATGGTGTGGCTCGTTCATCCACATTGCCACCATCCAACAGCAACATGGTATCCACCAGAATAAACCGC  
CAGCAGAGCTCAGACCTTCATAGCAGCAGTCATAGTAATTCTAGCAACAGCCAAGGAAGTTTCGGATGCT  
CACCCGGAAGTCAGATTGTAGCCAATGTTGCCTTAAACCAAGGACAGGCCAGTTCACAGAGCAGTAATCC  
CTCTTTAAACCTCAATAATTCTCTATGGAAGGTACAGGAATATCCCTAGCACAGTTCATGTCTCCAAGG  
AGACAGGTTACTTCTGGATTGGCAACAAGGCCAGGATGCCAAACAATTCCTTTCTCTCTAATATTTCGA



CATTAAGCTCTCCGTTGGCATGACAAGTAGTGCCTGTAATAATAATAACCGATCTTATTCAAACATCCC  
AGTAACATCTTTACAGGGTATGAATGAAGGACCAATAACTCCGTTGGCTTCTCTGCCAGTTCTCCAGTC  
CTCAGGCAGATGAGCTCACAGAATTCACCTAGCAGATTAATAACAACCCAGCAAAGCTGAGTCCAAAG  
ATAACAAAGAGATTGCCTCAATTTAAATGAAATGATTCAATCTGACAACAGCTCTAGTGATGGCAAACC  
TCTGGATTGAGGCTTCTGCATAACAATGACAGACTTTCAGATGGAGACAGTAAATACTCTCAAACCAGT  
CACAAACTAGTGCAGCTTTTGACAACAACCTGCCAACAGCAGTTACGGCATGCTGATATAGACACAAGCT  
GCAAAGATGTCTGTCTTGACACAGGCACCTCCAACCTCGCTCTGCTAACTCTTACAGGAGTTCTGTCC  
CTCTTCTCATAGTCTATTGACAGAACGGCATAAAATTCTACACCGCTCTTACAGGAGGGTAGCCCTCA  
GATATCACCACCTTGTCTGTCGAGCCTGATAAAAAGGACAGTGCATCTACTTCTGTGTGCTGACTGGAC  
AGGTACAAGGAACTCCAGTATAAACTAGAACTGGATGCTTCAAAGAAAAAGAATCAAAGACCATCA  
GCTCTACGCTATCTTTAGATAAAGATGAGAAAGATTTAAGTCAACTCCAAACCTGAGCCTGGATGAT  
GTAAGGTGAAAGTGAAAGAAAGAACAGATGGATCCATGTAATAACAAACCAACCCCAATGACCAAAC  
CCACTCTGAGGAAATAAACTGGAGGCCAGAGCCAGTTACAGCTGACCTTGACCAGTTTGATCAGTT  
ACTGCCACGCTGGAGAAGGCAGCACAGTTGCCAGGCTTATGTGAGACAGACAGGATGGATGGTGGGTC  
ACCAGTGAACCATCAAATCGGAGATCCTGCCAGCTTCACTTCAGTCCGCCACTGCCAGACCCACTTCCA  
GGCTAAATAGATTACCTGAGCTGGAATTGGAAGCAATTGATAACCAATTTGGACAACAGGAACAGGCGA  
TCAGATTCATGGACAATAATACAGTGACAGCTATAAATCAGAGTAAATCAGAAGACCAGTGTATTAGC  
TCACAATTAGATGAGCTTCTGTCCACCCACAACAGTAGAAGGGAGAAATGATGAGAAGGCTTCTCTTG  
AACAGCTGGTATCCTTCTTAGTGGCAAAGATGAACTGAGCTAGCTGAAGTACAGAGAGCTCTGGGAAT  
TGACAACTTGTTCAGGGGGTGGATTAGATGTATTATCAGAGAGATTTCCACCACAACAAGCAACGCCA  
CCTTTGATCATGGAAGAAAGACCAACCTTTATCCCAGCCTTACTCTTCTCTCTCTACTGCCAATC  
TCCCTAGCCCTTCCAAGGCATGGTCAGGCAAAAACCTTCACTGGGACGATGCCTGTTCAAGTAACACC  
TCCCGAGGTGCTTTTTACCTGGCATGGGCATGCAGCCAGGCAAACCTAAACAGACCCTCCGGTGA  
CCTAACAGCTTTCGACTTCAACTACAGCAGCGATTACAGGGACAACAGCAGTTGATACACCAAAATCGGC  
AAGCTATCTTAAACCAGTTTGCAGCAACTGCTCCTGTTGGCATCAATATGAGATCAGGCATGCAACAGCA  
AATTACACCTCAGCCACCCCTGAATGCTCAAATGTTGGCACAACGTCAGCGGAACTGTACAGTCAACAG  
CACCGACAGAGGCAGCTAATACAGCAGCAAAGAGCCATGCTTATGAGGCAGCAAAGCTTTGGGAACAACC  
TCCCTCCCTCATCTGGACTACCAGTTCAAATGGGAACCCCGTCTTCTCAGGGTGTCCACAGCAATT  
CCCCTATCCACAAACTATGGTACAAATCCAGGAACCCACCTGCTTCTACCAGCCGTTTTTCAACTA  
GCAGCAAATCCTGAAGCATCCTTGCCAACCGCAACAGCATGGTGAGCAGAGGCATGACAGGAAACATAG  
GAGGACAGTTTGGCACTGGAATCAATCCTCAGATGCAGCAGAATGTCTTCCAGTATCCAGGAGCAGGAAT  
GGTTCCCAAGGTGAGGCCAATTTGCTCCATCTAAGCCCTGGGAGCTCCATGGTGCCGATGCCAATC  
CCTCCTCCTCAGAGTTCTTCTCCAGCAAACCTCCACCTGCCTCCGGGTATCAGTACCAGACATGAAGG  
CCTGGCAGCAAGGAGCGATAGGAAACAACAATGTGTTCAAGCTGTCCAGAACCAGCCACGCTGC  
ACAGCCAGGAGTATAACAACAATGAGCATCACCGTTTCCATGGCAGGTGGAAATACGAATGTTCAGAAC  
ATGAACCAATGATGGCCAGATGCAGATGAGCTTTGAGATGCCAGGAATGAACACTGTGTGCCCTG  
AGCAGATAAATGATCCCGCACTGAGACACAGGCCTCTACTGCAACCAGCTCTCATCCACTGACCTTCT  
CAAACAGAAGCAGATGGAACCCAGGACAAGAAGACAGAAGAGTTCTTCTGTGGTGACTACAGAC

ACGCGTACGCGGCCGCTCGAGCAGAACTCATCTCAGAAGAGGATCTGGCAGCAAATGATATCCTGGATT  
ACAAGGATGACGACGATAAGGTTTAA

Protein Sequence: >RC224865 representing NM\_147223  
 Red=Cloning site Green=Tags(s)

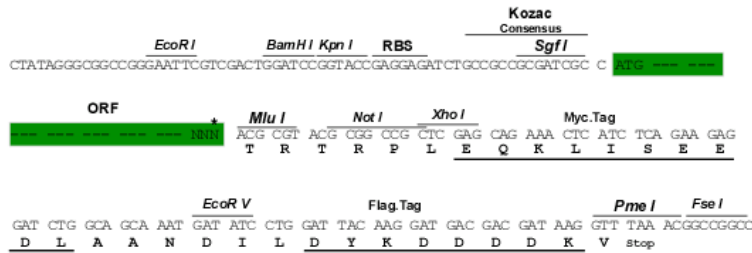
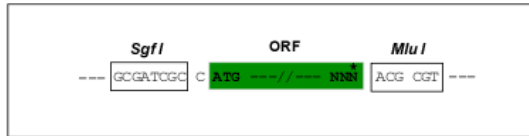
MSLGLDSSSDPANPDSHKRKGSPCDTLASSTEKRREQENKYLEELAELLSANISDIDSLSVKPKDKCKIL  
 KKTVDQIQLMKRMEQEKSTDDDDVQKSDISSSSQGVIEKESLGPLLLEALDGGFFVFNCEGRIVFVSENV  
 TSYLGYNQEELMNTSVYSILHVGDAEAFVKNLLPKSLVNGVWPWQEAARRNSHTFNCRMLIHPPEDEPGE  
 NQEACQRYEVMQCFTVSQPKSIQEDGEDFQSCLICIARRLRPPAITGVESFMTKQD TTGKIISIDTSSL  
 RAAGRTGWEDLVRKCIYAFFQPQGREPSYARQLFQEVMTRGTAASSPSYRFILNDGTMLSAHTKCKLCYPQ  
 SPDMQPFIMGIHIIDREHSGLSPODDTNSGMSIPRVNPSVNPISIPAHGVARSSSTLPPSNMNVSTRINR  
 QQSSDLHSSSHSNSSNSQGSFGCSPGSQIVANVALNQQQASSQSSNPSLNLNNSPMEGTGISLAQFMSPR  
 RQVTSGLATRPRMPNNSFPNISTLSSPVGMTSSACNNNRSYSNIPVTSLQGMNEGPNNVSVGFSASSPV  
 LRQMSSQNSPRLNIQPAKAESKDNKEIASILNEMIQSDNSSSDGKPLDSGLLHNNDR LSDGDSKYSQTS  
 HKLVQLLTTTAEQQLRHADIDTSCKDVL SCTGTNSASANS SGGSCPSSHSL TERHKILHRLLEQEGSPS  
 DITTL SVEPKKDSASTSVSVTGQVQGNSSIKLELDASKKESKDHQLLRLLDKDEKDLRSTPNLSLDD  
 VKVKVEKKEQMDPCNTNPTPMTKPTPEEIKLEAQSQFTADLDQFDQLLPTLEKAAQLPGLCETDRMDGAV  
 TSVTIKSEILPASLQSATARPTSRLNRLPELELEAIDNQFGQP GTGDQIPWTNNTVTAINQSKSEDCQIS  
 SQLDELLCPPTTVEGRNDEKALLEQLVSVFLSGKDETELAELDRALGIDKLVQGGGLDVL SERFPPQATP  
 PLIMEERNLYSQPYSSPSTANLPSPFQGMVRQKPSLGTMPVQVTPPRGAFSPGMGMQPRQTLNRPPAA  
 PNQLRLQLQQRLQGQQQLIHQNRQAILNQFAATAPVGINMRSGMQQITPQPPLNAQMLAQRQRELYSQQ  
 HRQRQLIQQRAML MRQQSF GNNLPPSSGLPVQMGNPRLPQGAPQQFPYPPNYGTNPGTPPASTSPFSQL  
 AANPEASLANRNSMVS RGMTGNIGGQFGTGINPQMQQNVFYQPGAGMVPQGEANFAPSLSPGSSMVPMP  
 PPPQSSLLQQTTPASGYQSPDMKAWQQAIGNNNVFSQAVQNQPTPAQPGVYNNMSITVSMAGGNTNVQN  
 MNPMAQMOMSSLQMPGMNTVCPEQINDPALRHTGL YCNQLSSTDLLKTEADGTQDKKTEEFFSVVTTD

TRTRPLEQKLISEEDLAANDILDYKDDDDKV

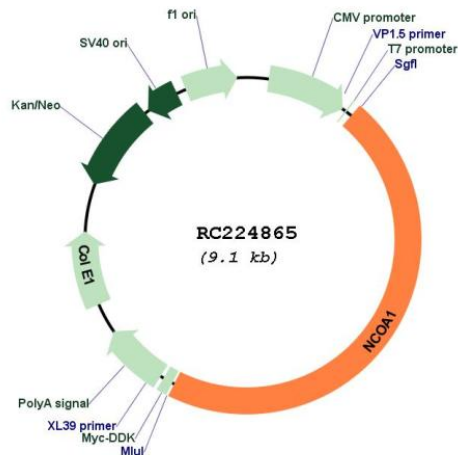
Restriction Sites:  
 Cloning Scheme:

SgfI-MluI

Cloning sites used for ORF Shuttling:



\* The last codon before the Stop codon of the ORF

**Plasmid Map:**


**ACCN:** NM\_147223

**ORF Size:** 4197 bp

**OTI Disclaimer:** The molecular sequence of this clone aligns with the gene accession number as a point of reference only. However, individual transcript sequences of the same gene can differ through naturally occurring variations (e.g. polymorphisms), each with its own valid existence. This clone is substantially in agreement with the reference, but a complete review of all prevailing variants is recommended prior to use. [More info](#)

**OTI Annotation:** This clone was engineered to express the complete ORF with an expression tag. Expression varies depending on the nature of the gene.

**Components:** The ORF clone is ion-exchange column purified and shipped in a 2D barcoded Matrix tube containing 10ug of transfection-ready, dried plasmid DNA (reconstitute with 100 ul of water).

**Reconstitution Method:**

1. Centrifuge at 5,000xg for 5min.
2. Carefully open the tube and add 100ul of sterile water to dissolve the DNA.
3. Close the tube and incubate for 10 minutes at room temperature.
4. Briefly vortex the tube and then do a quick spin (less than 5000xg) to concentrate the liquid at the bottom.
5. Store the suspended plasmid at -20°C. The DNA is stable for at least one year from date of shipping when stored at -20°C.

**RefSeq:** [NM\\_147223.3](#)

**RefSeq Size:** 6952 bp

**RefSeq ORF:** 4200 bp

**Locus ID:** 8648

**UniProt ID:** [Q15788](#)

<b>Cytogenetics:</b>	2p23.3
<b>Protein Families:</b>	Druggable Genome, Transcription Factors
<b>MW:</b>	152.2 kDa
<b>Gene Summary:</b>	<p>The protein encoded by this gene acts as a transcriptional coactivator for steroid and nuclear hormone receptors. It is a member of the p160/steroid receptor coactivator (SRC) family and like other family members has histone acetyltransferase activity and contains a nuclear localization signal, as well as bHLH and PAS domains. The product of this gene binds nuclear receptors directly and stimulates the transcriptional activities in a hormone-dependent fashion. Alternatively spliced transcript variants encoding different isoforms have been identified. [provided by RefSeq, Jul 2008]</p>