

## Product datasheet for **RC224856**

### EEF1D (NM\_032378) Human Tagged ORF Clone

#### Product data:

Product Type:	Expression Plasmids
Product Name:	EEF1D (NM_032378) Human Tagged ORF Clone
Tag:	Myc-DDK
Symbol:	EEF1D
Synonyms:	EF-1D; EF1D; FP1047
Mammalian Cell Selection:	Neomycin
Vector:	pCMV6-Entry (PS100001)
E. coli Selection:	Kanamycin (25 ug/mL)



[View online »](#)

ORF Nucleotide  
Sequence:

&gt;RC224856 ORF sequence

Red=Cloning site Blue=ORF Green=Tags(s)

TTTTGTAATACGACTCACTATAGGGCGGCCGGGAATTCGTCGACTGGATCCGGTACCGAGGAGATCTGCC  
GCC**CGGATCGCC**ATGAGGAGCGGGAAGGCCTCCTGCACCCTGGAGACCGTGTGGAAGACAAGCACAAGTATGAGGAGGCCG  
AGCGGCGCTTCTACGAACACGAGGCCACACAGGCGGCCGCTCCGCCAGCAGCTGCCAGCCGAGGGGCC  
AGCCATGAATGGGCCCGCCAGGACGACCTGAGGACGCTGATGAGGCGGAAGCCCTGACGGCGGCAGC  
AGGCGTGATCCCAGGAAGAGCCAGGACAGCAGGAAGCCCTGCAGAAAAAGAGGAAGCGCTCCCCAAGA  
GCGGGCTCGGCCCGGGACCTGGCCCTCCTGGCCCTCCTCGGCCAACGTGTGTGGCTGGACAAGTCACT  
TTTCGACCAGGCAGAGAGCTCCTACCGCCAGAAGCTGGCAGATGTGGCTGCCAGGCAGCCTGGCCCTCT  
GCCTTGGCCCTTGGGGTCTCTGCACCCATGGAACCAGGTGGCCTGCCACCACGTGACCTGGGGGATCT  
GGGTCAACAAGTCTCCTTCGACCAGGCTGAGCGGGCTTCGTGGAGTGGTCTCAGGCCCTGTTGCTGGC  
CCCCGAGGGCAGCCGAGGACGGGACTCCCAACACAGGCCAGCAGGTGGCCGTCGCCGACTGGCCAC  
CAGCCCAGCCACCGGTCAATGGCCAGCCCCGCTGGGCAGCCTGCAGGCACTGGTTCGGGAGGTGTGGC  
TGGAGAAGCCCCGGTATGATGCAGCCGAGAGGGGCTTCTACGAGGCCCTGTTTGACGGCCATCCCCAGG  
GAAGGTGCCTGCAAGAGCGAGCCGGCCTGGCCGAGGGTGCCTGGCGGGGGCCGAGAGACCGGGGGG  
CGCAACATCTTAGGGAACAAGCGGGCCGGGCTGCGACGGGCCGATGGGGAGGCCCTCTGCCTTGCCT  
ACTGTTACTTCTGCAGAAGGATGCAGAGGCCCTGGCTCAGCAAGCCTGCCTACGACAGCGCCGAGTG  
CCGCCACCACGCTGCCGAGGCCCTGCGTGTGGCCTGGTGCCTCGAAGCTGCCTCCCTGTCTACCGACCC  
GGTCTCGGTCTGGCCTGTCCGTGTCCAGCCTGAGACCCAACAGAAAAATGGCTACAACTTCTAGCAC  
ATGAGAAGATCTGGTTCGACAAGTTCAAATATGACGACGCAGAAAGGAGATTCTACGAGCAGATGAACGG  
GCCTGTGGCAGGTGCCTCCCGCCAGGAGAACGGCGCCAGCGTGATCCTCCGTGACATTGCGAGAGCCAGA  
GAGAACATCCAGAAATCCCTGGCTGGAAGCTCAGGCCCGGGGCCCTCCAGCGGCACCAGCGGAGACCAG  
GTGAGCTCGTCCGATTGCCAGTCTGGAAGTGGAGAACCAGAGTCTGCGTGGCGTGGTACAGGAGCT  
GCAGCAGGCCATCTCAAGCTGGAGGCCCGGCTGAACGTGCTGGAGAAGAGCTCGCTGGCCACCGGGCC  
ACGGCCCCACAGACCAGCACGTATCTCCATGCGCCAAGTGGAGCCCCAGCCAAGAAGCCAGCCACAC  
CAGCAGAGGATGACGAGGATGATGACATTGACCTGTTTGGCAGTGACAATGAGGAGGAGGACAAGGAGGC  
GGCACAGCTGCGGAGGAGCGGCTACGGCAGTACGCGGAGAAGAAGGCCAAGAAGCCTGCACTGGTGGCC  
AAGTCTCCATCCTGCTGGATGTCAAGCCTTGGGATGATGAGACGGACATGGCCCAGCTGGAGGCCTGTG  
TGCCTCTATCCAGCTGGACGGGCTGGTCTGGGGGCTTCCAAGCTGGTGCCTGGGCTACGGTATCCG  
GAAGCTACAGATTCAGTGTGTGGTGGAGGACGACAAGGTGGGGACAGACTTGTGGAGGAGGAGATCACC  
AAGTTTGGAGGACAGTGCAGAGTGTGCATATCGCAGCTTTCAACAAGATCAG**CGGACCG**ACGCGTACGCGGCCGCTCGAGCAGAACTCATCTCAGAAGAGGATCTGGCAGCAAATGATATCC  
TGGATTACAAGGATGACGACGATAAGGTTTAA

**Protein Sequence:** >RC224856 protein sequence  
Red=Cloning site Green=Tags(s)

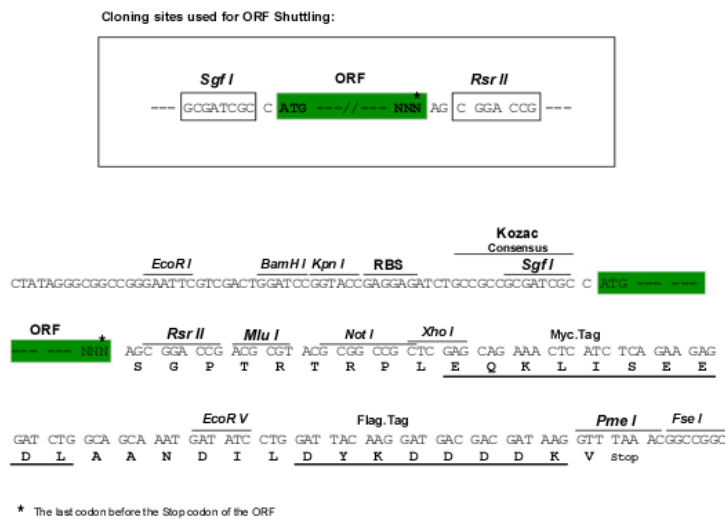
```
MRSKGASCTLETVWEDKHKYEAEERRFYEHEATQAAASAQQLPAEGPAMNGPGQDDPEDADEAEAPDGGSR
RRDPRKSQDSRKPLQKKRKRSPKSGLGPADLALLGLSAERVWLKSLFDQAESSYRQKLADVAAQAAWPP
ALAPWGLCTHGNQVACHHVTWGIWYNKSSFDAQERAFVEVSQLLLAPEGSSRRQGTPTNGQVAVPDLAH
QPSPPVNGQPPLGSLQALVREVWLEKPRYDAAERGFYEALFDGHPGPKVRLQERAGLAEGARRRRDRRG
RNILGNKRAGLRADGEAPSALPYCYFLQKDAEAPWLSKPAYDSAECRHAAEALRVAWCLEEAASLSHRP
GPRSGLSVSSLRPNRKMATNFLAHEKIWFDFKFDYDAERRFYEQMNGPVAGASRQENGASVILRDIARAR
ENIQKSLAGSSGPGASSGTSGDHGELVVRIASLEVENQSLRGVVQELQQAISKLEARLNLEKSSPGHRA
TAPQTHVSPMRQVEPPAKPATPAEDDEDDIDLFGSDNEEDKEAAQLREERLRQYAEKAKKALVA
KSSILLDVKPWDEDTMAQLEACVRSIQLDGLVWGASKLVPVGYGIRKLQIQCVVEDDKVGTDLLEEEIT
KFEHVVQSVDIAAFNKI
```

SGPTRTRPLEQKLI SEEDLAANDILDYKDDDDKV

**Chromatograms:** [https://cdn.origene.com/chromatograms/mk6618\\_a08.zip](https://cdn.origene.com/chromatograms/mk6618_a08.zip)

**Restriction Sites:** SgfI-RsrII

**Cloning Scheme:**



**ACCN:** NM\_032378

**ORF Size:** 1941 bp

**OTI Disclaimer:** The molecular sequence of this clone aligns with the gene accession number as a point of reference only. However, individual transcript sequences of the same gene can differ through naturally occurring variations (e.g. polymorphisms), each with its own valid existence. This clone is substantially in agreement with the reference, but a complete review of all prevailing variants is recommended prior to use. [More info](#)

**OTI Annotation:** This clone was engineered to express the complete ORF with an expression tag. Expression varies depending on the nature of the gene.

**Components:** The ORF clone is ion-exchange column purified and shipped in a 2D barcoded Matrix tube containing 10ug of transfection-ready, dried plasmid DNA (reconstitute with 100 ul of water).

**Reconstitution Method:**

1. Centrifuge at 5,000xg for 5min.
2. Carefully open the tube and add 100ul of sterile water to dissolve the DNA.
3. Close the tube and incubate for 10 minutes at room temperature.
4. Briefly vortex the tube and then do a quick spin (less than 5000xg) to concentrate the liquid at the bottom.
5. Store the suspended plasmid at -20°C. The DNA is stable for at least one year from date of shipping when stored at -20°C.

**RefSeq:** [NM\\_032378.6](#)

**RefSeq Size:** 2498 bp

**RefSeq ORF:** 1944 bp

**Locus ID:** 1936

**UniProt ID:** [P29692](#)

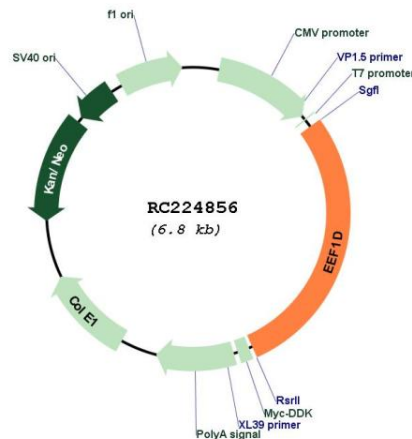
**Cytogenetics:** 8q24.3

**Domains:** EF1BD

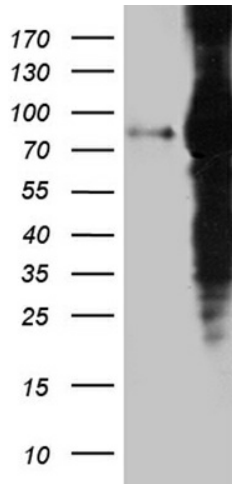
**MW:** 71.4 kDa

**Gene Summary:** This gene encodes a subunit of the elongation factor-1 complex, which is responsible for the enzymatic delivery of aminoacyl tRNAs to the ribosome. This subunit, delta, functions as guanine nucleotide exchange factor. It is reported that following HIV-1 infection, this subunit interacts with HIV-1 Tat. This interaction results in repression of translation of host cell proteins and enhanced translation of viral proteins. Several alternatively spliced transcript variants encoding multiple isoforms have been found for this gene. Related pseudogenes have been defined on chromosomes 1, 6, 7, 9, 11, 13, 17, 19.[provided by RefSeq, Aug 2010]

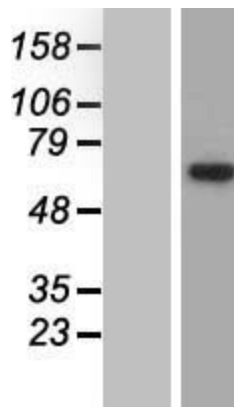
### Product images:



Circular map for RC224856



HEK293T cells were transfected with the pCMV6-ENTRY control (Cat# [PS100001], Left lane) or pCMV6-ENTRY EEF1D (Cat# RC224856, Right lane) cDNA for 48 hrs and lysed. Equivalent amounts of cell lysates (5 ug per lane) were separated by SDS-PAGE and immunoblotted with anti-EEF1D (Cat# [TA811677])(1:2000). Positive lysates [LY429804] (100ug) and [LC429804] (20ug) can be purchased separately from OriGene.



Western blot validation of overexpression lysate (Cat# [LY427131]) using anti-DDK antibody (Cat# [TA50011-100]). Left: Cell lysates from untransfected HEK293T cells; Right: Cell lysates from HEK293T cells transfected with [RC226060] using transfection reagent MegaTran 2.0 (Cat# [TT210002]).