

Product datasheet for RC224854

GATA1 (NM_002049) Human Tagged ORF Clone

Product data:

Product Type:	Expression Plasmids
Product Name:	GATA1 (NM_002049) Human Tagged ORF Clone
Tag:	Myc-DDK
Symbol:	GATA1
Synonyms:	ERYF1; GATA-1; GF-1; GF1; NF-E1; NFE1; XLANP; XLTDA; XLTT
Mammalian Cell Selection:	Neomycin
Vector:	pCMV6-Entry (PS100001)
E. coli Selection:	Kanamycin (25 ug/mL)
ORF Nucleotide Sequence:	>RC224854 representing NM_002049 Red=Cloning site Blue=ORF Green=Tags(s)

TTTTGTAATACGACTCACTATAGGGCGGCCGGAATTCGTCGACTGGATCCGGTACCGAGGAGATCTGCC
GCC**CGATCGCC**

ATGGAGTTCCTGGCCTGGGGTCCCTGGGGACCTCAGAGCCCCTCCCCAGTTTGTGGATCCTGCTCTGG
TGTCTCCACACCAGAATCAGGGGTTTTCTTCCCCTCTGGGCCTGAGGGCTTGGATGCAGCAGCTTCCTC
CACTGCCCGGAGCACAGCCACCGCTGCAGCTGCGGCCTACTACAGGGACGCTGAGGCTACAGA
CACTCCCCAGTCTTTCAGGTGTACCCATTGCTCAACTGTATGGAGGGATCCCAGGGGGCTACCATATG
CCGGCTGGGCCTACGGCAAGACGGGGCTCTACCCTGCCTCAACTGTGTGTCCCACCCGCGAGGACTCTCC
TCCCCAGGCCGTGGAAGATCTGGATGGAAAAGGCAGCACCAGCTTCTGGAGACTTTGAAGACAGAGCGG
CTGAGCCCAGACCTCCTGACCCTGGGACCTGCACTGCCTTCATCACTCCCTGTCCCAATAGTGCTTATG
GGGGCCCTGACTTTTCCAGTACCTTCTTTTCTCCCACCGGGAGCCCCCTCAATTCAGCAGCCTATTCCTC
TCCAAGCTTCGTGGAATCTCCCCCTGCCTCCTGTGAGGCCAGGGAGTGTGTGAAGTCCGGAGCAACA
GCCACTCCACTGTGGCGGAGGGACAGGACAGGCCACTACCTATGCAACGCCTGCGGCCTCTATCACAAGA
TGAATGGGCAGAACAGGCCCTCATCCGGCCCAAGAAGCGCTGATTGTCAGTAAACGGGCAGGTA
GTGCACCAACTGCCAGACGACCACGACACTGTGGCGGAGAAATGCCAGTGGGGATCCCGTGTGCAAT
GCCTGCGGCCTCTACTACAAGTACACCAGGTGAACCGGCCACTGACCATGCGGAAGGATGTTATTCAGA
CTGAAAACCGCAAGGCATCTGAAAAGGGAAAAAGAAACGGGGCTCCAGTCTGGGAGGCACAGGAGCAGC
CGAAGGACCAGCTGTTGGCTTTATGGTGGTGGCTGGGGCAGCGGTAGCGGAATTGTGGGGAGGTGGCT
TCAGGCCCTGCACTGGGCCCCCAGGTAAGTGCCTCTCTACCAAGGCCTGGGCCCTGTGGTGTGTGAG
GGCCTGTAGCCACCTCATGCCTTCCCTGGACCCTACTGGGCTCACCCACGGGCTCCTCCCCACAGG
CCCCATGCCCCCACCACCAGCACTACTGTGGTGGCTCCGCTCAGCTCA

ACGGTACGGCGCCGCTCGAGCAGAACTCATCTCAGAAGAGGATCTGGCAGCAATGATATCCTGGATT
ACAAGGATGACGACGATAAGGTTTAA



[View online »](#)

Protein Sequence: >RC224854 representing NM_002049
Red=Cloning site Green=Tags(s)

MEFPGLGSLGTSEPLPQFVDPALVSSTPESGVFFPSGPEGLDAAASSTAPSTATAAAAAALAYYRDAEAYR
HSPVVFQVYPLLNCMEGIPGGSPYAGWAYGKTGLYPASTVCPPTREDSPPQAVEDLDGKGSTSFLETLKTER
LSPDLLTLGPALPSSLPVNSAYGGPDFSSTFFSPTGSPLNSAAYSSPKLRGTLPLPPCEARECVNCGAT
ATPLWRRDRTGHYLCNACGLYHKMNGQNRPLIRPKKRLIVSKRAGTQCTNCQTTTTLWRRNASGDPVCN
ACGLYYKLHQVNRPLTMRKDGIQTRNRKASGKGGKKRGSLSGGTAAEAGPAGGFMMVAGGSGSGNCGEVA
SGLTLGPPGTAHLYQGLGPVVLSPVSHLMPFPGPLLGSPTGSFPTGMPPTTSTTVVAPLSS

TRTRPLEQKLISEEDLAANDILDYKDDDDKV

Chromatograms: https://cdn.origene.com/chromatograms/mg3778_d01.zip

Restriction Sites: SgfI-MluI

Cloning Scheme:



* The last codon before the Stop codon of the ORF

ACCN: NM_002049

ORF Size: 1239 bp

OTI Disclaimer: The molecular sequence of this clone aligns with the gene accession number as a point of reference only. However, individual transcript sequences of the same gene can differ through naturally occurring variations (e.g. polymorphisms), each with its own valid existence. This clone is substantially in agreement with the reference, but a complete review of all prevailing variants is recommended prior to use. [More info](#)

OTI Annotation: This clone was engineered to express the complete ORF with an expression tag. Expression varies depending on the nature of the gene.

Components: The ORF clone is ion-exchange column purified and shipped in a 2D barcoded Matrix tube containing 10ug of transfection-ready, dried plasmid DNA (reconstitute with 100 ul of water).

Reconstitution Method:

1. Centrifuge at 5,000xg for 5min.
2. Carefully open the tube and add 100ul of sterile water to dissolve the DNA.
3. Close the tube and incubate for 10 minutes at room temperature.
4. Briefly vortex the tube and then do a quick spin (less than 5000xg) to concentrate the liquid at the bottom.
5. Store the suspended plasmid at -20°C. The DNA is stable for at least one year from date of shipping when stored at -20°C.

Note: Plasmids are not sterile. For experiments where strict sterility is required, filtration with 0.22um filter is required.

RefSeq: [NM_002049.4](#)

RefSeq Size: 1501 bp

RefSeq ORF: 1242 bp

Locus ID: 2623

UniProt ID: [P15976](#)

Cytogenetics: Xp11.23

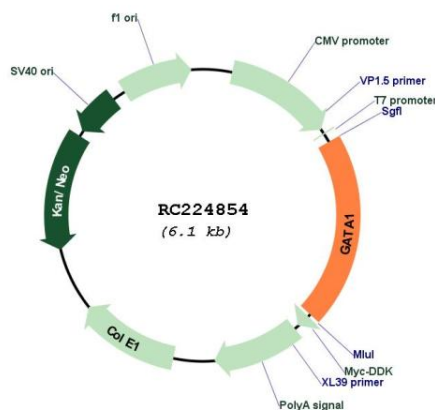
Domains: GATA

Protein Families: Adult stem cells, Druggable Genome, ES Cell Differentiation/IPS, Transcription Factors

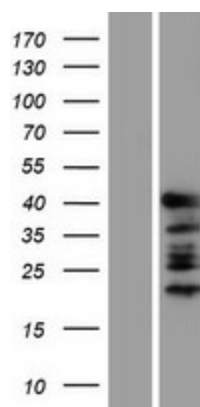
MW: 43.2 kDa

Gene Summary: This gene encodes a protein which belongs to the GATA family of transcription factors. The protein plays an important role in erythroid development by regulating the switch of fetal hemoglobin to adult hemoglobin. Mutations in this gene have been associated with X-linked dyserythropoietic anemia and thrombocytopenia. [provided by RefSeq, Jul 2008]

Product images:



Circular map for RC224854



Western blot validation of overexpression lysate (Cat# [LY400758]) using anti-DDK antibody (Cat# [TA50011-100]). Left: Cell lysates from untransfected HEK293T cells; Right: Cell lysates from HEK293T cells transfected with RC224854 using transfection reagent MegaTran 2.0 (Cat# [TT210002]).