

Product datasheet for **RC224853**

PDE9A (NM_001001582) Human Tagged ORF Clone

Product data:

Product Type:	Expression Plasmids
Product Name:	PDE9A (NM_001001582) Human Tagged ORF Clone
Tag:	Myc-DDK
Symbol:	PDE9A
Synonyms:	HSPDE9A2
Mammalian Cell Selection:	Neomycin
Vector:	pCMV6-Entry (PS100001)
E. coli Selection:	Kanamycin (25 ug/mL)



[View online »](#)

ORF Nucleotide Sequence:

>RC224853 representing NM_001001582
 Red=Cloning site Blue=ORF Green=Tags(s)

TTTTGTAATACGACTCACTATAGGGCGGCCGGAATTCGTCGACTGGATCCGGTACCGAGGAGATCTGCC
 GCC**CGGATCGCC**

ATGGAGCATTTCAGAAGAACACGACCATCTCCCTGCTGACCACCGACGACGCCATGGTCTCCATCGACC
 CCACCATGCCCGGAATTCAGAACGCACTCCGTACAAAGTGAGACCTGTGGCCATCAAGCAACTCTCCGC
 TGGTGTGAGGACAAGAGAACCACAAGCCGTGGCCAGTCTGCTGAGAGACCACTAGGGGACAGACGGTT
 GTGGGCTGGAGCAGCCCGGAGGGAAGGAGCATTGAAAGTGGACAGGTAGAGCCAGGCCAGAGAGC
 CCCAGGGTCTACCAGGAAGGCCAGCGCATCCCTCCAGAGAGAGAAGAAATTAATCCAGAGCGTCTGGC
 GCAGGTTGCAGAGCAGTTCTCAAGAGCATTCAAAATCAATGAAGTGAAGCTGAAGTTGCAAAATCACTTG
 GCTGTCTAGAGAAACCGTGAATTTGGAAGGACTAAAAGTGGTGGAGATTGAGAAATGCAAGAGTGACA
 TTAAGAAGATGAGGGAGGAGCTGGCGGCCAGAAGCAGCAGGACCAACTGCCCTGTAAGTACAGTTTTTT
 GGATAACCACAAGAAGTTGACTCCTCGACGCGATGTTCCACTTACCCCAAGTACCTGCTCTCTCCAGAG
 ACCATCGAGGCCCTGCGGAAGCCGACCTTTGACGTCTGGCTTTGGGAGCCCAATGAGATGCTGAGCTGCC
 TGGAGCATGTACCACGACCTCGGGCTGGTCAGGGACTTCAGCATCAACCTGTACCCTCAGGAGGTG
 GCTGTTCTGCGTCCACGACAACACTACAGAAAACACCCCTTCCACAACCTCCGGCACTGCTTCTGCGTGGCC
 CAGATGATGTACAGCATGGTCTGGCTCTGCAGTCTCCAGGAGAAGTTCTCACAACCGGATATCCTGATCC
 TAATGACAGCGGCCATCTGCCACGATCTGGACCATCCCGGCTACAACAACACGTACCAGATCAATGCCCG
 CACAGAGCTGGCGGTCCGCTACAATGACATCTCACCGTGGAGAACCACCACTGCCCGTGGCCTCCAG
 ATCCTCGCCGAGCCTGAGTGCAACATCTTCCAACATCCCACCTGATGGGTTCAAGCAGATCCGACAGG
 GAATGATCACATTAATCTTGGCCACTGACATGGCAAGACATGCAGAAATATGGATTCTTTCAAAGAGAA
 AATGGAGAATTTGACTACAGCAACGAGGAGCACATGACCCTGCTGAAGATGATTTTGATAAAATGCTGT
 GATATCTTAACGAGGTCCGTCCAATGGAAGTCCGAGAGCCTTGGTGGACTGTTTATTAGAGGAATATT
 TTATGCAGAGCGACCGTGAAGTGAAGGCCTTCTGTGGCACCGTTCATGGACCGAGACAAAGTGAC
 CAAGGCCACAGCCAGATTGGGTTCAAGTTTGTCTGATCCCAATGTTTGAACAGTGACCAAGCTC
 TTCCCATGGTTGAGGAGATCATGCTGCAGCCACTTTGGGAATCCCGAGATCGCTACGAGGAGCTGAAGC
 GGATAGATGACGCCATGAAAGAGTTACAGAAGAAGACTGACAGCTTGACGTCTGGGGCCACCGAGAAGTC
 CAGAGAGAGAAGCAGAGATGTAAAAACAGTGAAGGAGACTGTGCC

ACGGGCCGCTCGAGCAGAACTCATCTCAGAAGAGGATCTGGCAGCAAATGATATCCTGGA
TTACAAGGATGACGACGATAAGGTTTAA

Protein Sequence:

>RC224853 representing NM_001001582
 Red=Cloning site Green=Tags(s)

MDFRRNTTISLLTTDDAMVSIIDPTMPANSERTPYKVRPVAIKQLSAGVEDKRRTTSRGSQSAERPLRDRRV
 VGLEQPRREGAFESGQVEPRPREPQGCYQEGQRIPPEREELIQSVLAQVAEQFSRAFKINELKAEVANHL
 AVLEKRVELEGLKVVEIEKCKSDIKMREELAARSSRTNCPCKYSFLDNHKKLTPRRDVPTYPKYLLSPE
 TIEALRKPTFDVWLWEPNEMLSLEHMYHDLGLVRDFSINPVTLRRWLCVHDNYRNNPFHNRHCFVA
 QMMYSMVWLSLQEKFSQTDILILMTAAICHDLDPGYNNTYQINARTELAVERYNDISPLENHHCAVAFQ
 ILAEPECNIFSNIPPDGFKQIRQGMITLILATDMARHAEIMDSFKEKMFNDYSNEEHMTLLKMILIKCC
 DISNEVRPMEVAEPWVDCLLEEYFMQSDREKSEGLPVAPFMDRDKVTKATAQIGFIKFLVLPFVETVKL
 FPMVEEIMLQPLWESRDREELKRIDDAMKELQKKTDSLTSGATEKSRERSRDVKNSEGDCA

TRRLEQKLISEEDLAANDILDYKDDDDKV

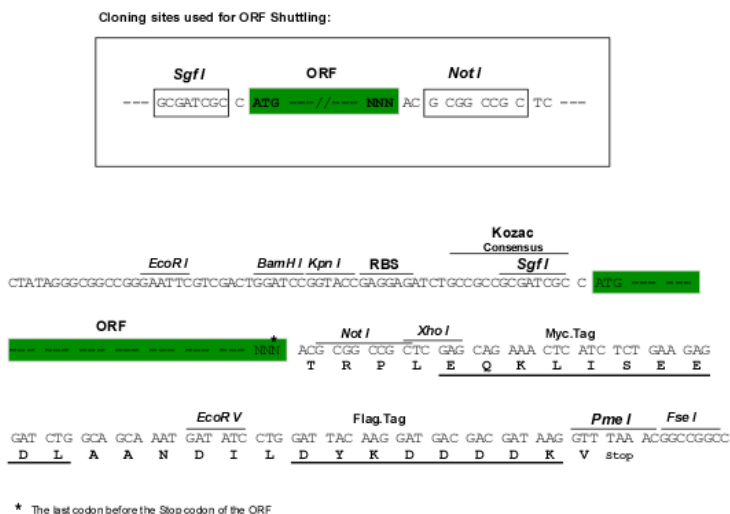
Chromatograms:

https://cdn.origene.com/chromatograms/mk8066_h05.zip

Restriction Sites:

Sgfl-NotI

Cloning Scheme:



ACCN: NM_001001582

ORF Size: 1656 bp

OTI Disclaimer: The molecular sequence of this clone aligns with the gene accession number as a point of reference only. However, individual transcript sequences of the same gene can differ through naturally occurring variations (e.g. polymorphisms), each with its own valid existence. This clone is substantially in agreement with the reference, but a complete review of all prevailing variants is recommended prior to use. [More info](#)

OTI Annotation: This clone was engineered to express the complete ORF with an expression tag. Expression varies depending on the nature of the gene.

Components: The ORF clone is ion-exchange column purified and shipped in a 2D barcoded Matrix tube containing 10ug of transfection-ready, dried plasmid DNA (reconstitute with 100 ul of water).

Reconstitution Method:

1. Centrifuge at 5,000xg for 5min.
2. Carefully open the tube and add 100ul of sterile water to dissolve the DNA.
3. Close the tube and incubate for 10 minutes at room temperature.
4. Briefly vortex the tube and then do a quick spin (less than 5000xg) to concentrate the liquid at the bottom.
5. Store the suspended plasmid at -20°C. The DNA is stable for at least one year from date of shipping when stored at -20°C.

RefSeq: [NM_001001582.1](#), [NP_001001582.1](#)

RefSeq Size: 2032 bp

RefSeq ORF: 1659 bp

Locus ID: 5152

UniProt ID: [O76083](#)

Cytogenetics: 21q22.3

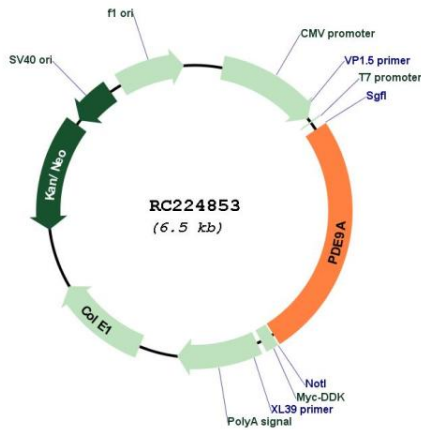
Protein Families: Druggable Genome

Protein Pathways: Progesterone-mediated oocyte maturation, Purine metabolism

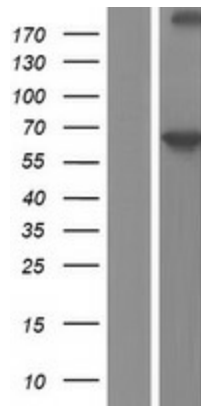
MW: 63.9 kDa

Gene Summary: The protein encoded by this gene catalyzes the hydrolysis of cAMP and cGMP to their corresponding monophosphates. The encoded protein plays a role in signal transduction by regulating the intracellular concentration of these cyclic nucleotides. Multiple transcript variants encoding several different isoforms have been found for this gene. [provided by RefSeq, Jul 2008]

Product images:



Circular map for RC224853



Western blot validation of overexpression lysate (Cat# [LY424399]) using anti-DDK antibody (Cat# [TA50011-100]). Left: Cell lysates from untransfected HEK293T cells; Right: Cell lysates from HEK293T cells transfected with RC224853 using transfection reagent MegaTran 2.0 (Cat# [TT210002]).