

## Product datasheet for **RC224851**

### UBE2S (NM\_014501) Human Tagged ORF Clone

#### Product data:

Product Type:	Expression Plasmids
Product Name:	UBE2S (NM_014501) Human Tagged ORF Clone
Tag:	Myc-DDK
Symbol:	UBE2S
Synonyms:	E2-EPF; E2EPF; EPF5
Mammalian Cell Selection:	Neomycin
Vector:	pCMV6-Entry (PS100001)
E. coli Selection:	Kanamycin (25 ug/mL)
ORF Nucleotide Sequence:	>RC224851 representing NM_014501 Red=Cloning site Blue=ORF Green=Tags(s)

TTTTGTAATACGACTCACTATAGGGCGCCGGGAATTCGTCGACTGGATCCGGTACCGAGGAGATCTGCC  
GCC**CGATCGCC**

ATGAACCTCAACGTGGAGAACCTACCCCGCACATCATCCGCCTGGTGTACAAGGAGGTGACGACACTGA  
CCGCAGACCCACCCGATGGCATCAAGGTCTTCCCAACGAGGAGGACCTCACCGACCTCCAGGTCAACAT  
CGAGGGCCCTGAGGGGACCCATATGCTGGAGGTCTGTTCCGCATGAACTCCTGCTGGGAAGGACTTC  
CCTGCCTCCCCACCAAGGGCTACTTCTGACCAAGATCTTCCACCCGAACGTGGCGCCAATGGCGAGA  
TCTGCGTCAACGTGCTCAAGAGGGACTGGACGGCTGAGCTGGGCATCCGACACGTACTGCTGACCATCAA  
GTGCTGCTGATCCACCTAACCCTGAGTCTGCACTCAACGAGGAGGCGGCCCGCTGCTTGGAGAAC  
TACGAGGAGTATGCGGCTCGGGCCGTCTGCTCACAGAGATCCACGGGGCGCCGGCGGGCCAGCGGCA  
GGGCCGAAGCCGGTGGGGCCCTGGCCAGTGGCACTGAAGCTTCCCTCCACCGACCTGGGGCCCCAGGGGG  
CCCGGGAGGGCTGAGGGTCCCATGGCCAAGAAGCATGCTGGCGAGCGGATAAGAAGCTGGCGGCCAAG  
AAAAAGACGGACAAGAAGCGGGCGCTGCGGCGGCTG

**ACGCGT**ACGCGGGCCGCTCGAGCAGAACTCATCTCAGAAGAGGATCTGGCAGCAATGATATCCTGGATT  
ACAAGGATGACGACGATAAGGTTTAA

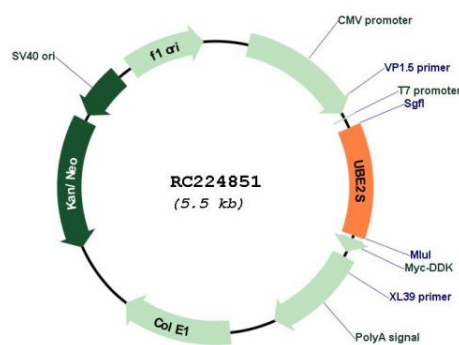


[View online »](#)

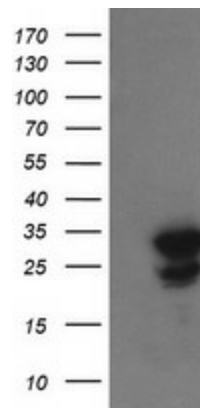


<b>Components:</b>	The ORF clone is ion-exchange column purified and shipped in a 2D barcoded Matrix tube containing 10ug of transfection-ready, dried plasmid DNA (reconstitute with 100 ul of water).
<b>Reconstitution Method:</b>	<ol style="list-style-type: none"> <li>1. Centrifuge at 5,000xg for 5min.</li> <li>2. Carefully open the tube and add 100ul of sterile water to dissolve the DNA.</li> <li>3. Close the tube and incubate for 10 minutes at room temperature.</li> <li>4. Briefly vortex the tube and then do a quick spin (less than 5000xg) to concentrate the liquid at the bottom.</li> <li>5. Store the suspended plasmid at -20°C. The DNA is stable for at least one year from date of shipping when stored at -20°C.</li> </ol>
<b>RefSeq:</b>	<u><a href="#">NM_014501.3</a></u>
<b>RefSeq Size:</b>	890 bp
<b>RefSeq ORF:</b>	669 bp
<b>Locus ID:</b>	27338
<b>UniProt ID:</b>	<u><a href="#">Q16763</a></u>
<b>Cytogenetics:</b>	19q13.42
<b>Domains:</b>	UBCc
<b>Protein Families:</b>	Druggable Genome
<b>Protein Pathways:</b>	Ubiquitin mediated proteolysis
<b>MW:</b>	23.7 kDa
<b>Gene Summary:</b>	This gene encodes a member of the ubiquitin-conjugating enzyme family. The encoded protein is able to form a thiol ester linkage with ubiquitin in a ubiquitin activating enzyme-dependent manner, a characteristic property of ubiquitin carrier proteins. [provided by RefSeq, Jul 2008]

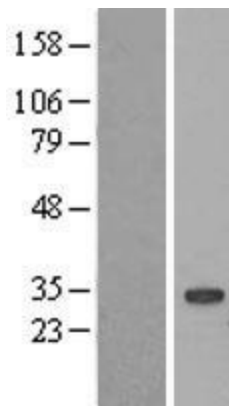
### Product images:



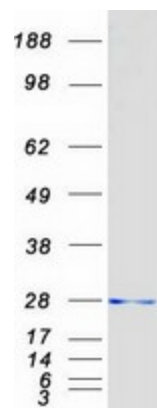
Circular map for RC224851



HEK293T cells were transfected with the pCMV6-ENTRY control (Cat# [PS100001], Left lane) or pCMV6-ENTRY UBE2S (Cat# RC224851, Right lane) cDNA for 48 hrs and lysed. Equivalent amounts of cell lysates (5 ug per lane) were separated by SDS-PAGE and immunoblotted with anti-UBE2S (Cat# [TA505187]). Positive lysates [LY402342] (100ug) and [LC402342] (20ug) can be purchased separately from OriGene.



Western blot validation of overexpression lysate (Cat# [LY402342]) using anti-DDK antibody (Cat# [TA50011-100]). Left: Cell lysates from untransfected HEK293T cells; Right: Cell lysates from HEK293T cells transfected with RC224851 using transfection reagent MegaTran 2.0 (Cat# [TT210002]).



Coomassie blue staining of purified UBE2S protein (Cat# [TP324851]). The protein was produced from HEK293T cells transfected with UBE2S cDNA clone (Cat# RC224851) using MegaTran 2.0 (Cat# [TT210002]).