

Product datasheet for RC224837

ATR (NM_001184) Human Tagged ORF Clone

Product data:

Product Type:	Expression Plasmids
Product Name:	ATR (NM_001184) Human Tagged ORF Clone
Tag:	Myc-DDK
Symbol:	ATR
Synonyms:	FCTCS; FRP1; MEC1; SCKL; SCKL1
Mammalian Cell Selection:	Neomycin
Vector:	pCMV6-Entry (PS100001)
E. coli Selection:	Kanamycin (25 ug/mL)
ORF Nucleotide Sequence:	>RC224837 representing NM_001184 Red=Cloning site Blue=ORF Green=Tags(s)

TTTTGTAATACGACTCACTATAGGGCGGCCGGAATTCGTCGACTGGATCCGGTACCGAGGAGATCTGCC
GCC**CGATCGCC**

ATGGGGGAACATGGCCTGGAGCTGGCTTCCATGATCCCCGCCCTGCGGGAGCTGGGCAGTGCCACACCAG
AGGAATATAATACAGTTGTACAGAAGCCAAGACAAATTCTGTGTCAATTCATTGACCGGATACTTACAGA
TGTAATGTTGTTGCTGTAGAATTGTAAGAAAAGTACTCTCAGCCAACCTCCGTGATGTTGCTTGAT
TTCATCCAGCATATCATGAAATCCTCCCCACTTATGTTTGTAAATGTGAGTGAAGCCATGAGGCCAAAG
GCAGTTGTATTGAATTCAGTAATTGGATCATAACGAGACTTCTGCGGATTGCAGCAACTCCCTCCTGTCA
TTTGTTACACAAGAAAATCTGTGAAGTCATCTGTTCAATTATTATTCTTTTTAAAAGCAAGAGTCCCTGCT
ATTTTTGGGGTACTCACAAAAGAATTATTACAACTTTTTGAAGACTTGGTTTACCTCCATAGAAGAAATG
TGATGGGTGATGCTGTGGAATGGCCAGTGGTATGAGCCGATTTTTAAGTCAATTAGATGAACACATGGG
ATATTTACAATCAGCTCCTTTGCAGTTGATGAGTATGCAAAATTTAGAATTTATTGAAGTCACTTTATTA
ACGGTTCTTACTCGTATTATTGCAATTGTGTTTTTAGAAGGCAAGAAGTCTTACTTTGGCAGATAGGTT
GTGTTCTGCTAGAGTATGGTAGTCCAAAATTAATCCCTAGCAATTAGCTTTTTAACAGAACTTTTTCA
GCTTGGAGGACTACCAGCACAACCAGCTAGCACTTTTTTTCAGCTCATTTTTTGAATTTAAAACACCTT
GTAGAAATGGATACTGACCAATTGAAACTCTATGAAGAGCCATTATCAAAGCTGATAAAGACACTATTTT
CCTTTGAAGCAGAAGCTTATAGAAATATTGAACCTGTCTATTTAAATATGCTGCTGGAAAAACTCTGTGT
CATGTTTGAAGACGGTGTGCTCATGCGGCTTAAGTCTGATTTGCTAAAAGCAGCTTTGTGCCATTTACTG
CAGTATTTCTTAAATTTGTGCCAGCTGGGTATGAATCTGCTTTACAAGTCAGGAAGGTCTATGTGAGAA
ATATTTGTAAAGCTTTTTGGATGTGCTTGGAAATTGAGGTAGATGCAGAGTACTTGTGGGCCACTTTA
TGCAGCTTTGAAAATGAAAAGTATGAAAATCATTGAGGAGATTCAATGCCAAACTCAACAGGAAAACCTC
AGCAGTAATAGTGATGGAATATCACCCAAAAGGCGTCTCAGCTCGTCTCTAAACCTTCTAAAAGAG
CACCAAAACAGACTGAGGAAATTAACATGTGGACATGAACCAAAAGAGCATATTATGGAGTGCAGTAA
ACAGAAAGCTGAATCCCTTCAGATTTCCCTTGAATACAGTGGCCTAAAGAATCCTGTTATTGAGATGTTA



[View online »](#)

GAAGGAATTGCTGTTGTCTTACAACACTGACTGCTCTGTGTACTGTTTCATTGTTCTCATCAAAAACATGAACT
 GCCGACTTTCAAGGACTGTCAACATAAATCCAAGAAGAAACCTTCTGTAGTGATAAATTGGATGTCATT
 GGATTTTTACACAAAAGTGCTTAAGAGCTGTAGAAGTTTGTAGAAATCTGTTTCAGAACTGGACCTGGAG
 GCAACCATTGATAAAGGTGGTGAAAATTTATGATGCTTTGATTTATATGCAAGTAAACAGTTTCATTTGAAG
 ATCATATCCTGGAAGATTTATGTGGAATGCTCTCACTCCATGGATTTATCCCATTCTGATGACGGCTG
 TTTAAAGTTGACCACATTTGCCGCTAATCTTCTAACATTAAGCTGTAGGATTTTCAGATAGCTATTCACCA
 CAGGCACAATCAGGATGTGTGTTTCTTCTGACTGTTTTCCAAGAAGAATATTCCTTGAGTGGAGAACAG
 CAGTTTTACAACCTGGGCCCTGCAGAGCTCCCATGAAGTAATCCGGGCTAGTTGTGTTAGTGGATTTTTAT
 CTTATTGCAGCAGCAGAATTCTTGTAAACAGAGTTCCCAAGATTCTTATAGATAAAGTCAAAGATGATTCT
 GACATTGTCAAGAAAGAATTTGCTTCTATACTTGGTCAACTTGTCTGACTCTTCACGGCATGTTTTATC
 TGACAAGTTCTTAAACAGAACCTTCTCTGAACACGGACATGTGGACCTTCTGTAGGAACTTGAAAGC
 CACTTCTCAACATGAATGTTTCATCTTCTCAACTAAAAGCTTCTGTCTGCAAGCCATTCTTTTTCTACTG
 AAAAAAAAAATACCTAGTCCAGTAAAACCTTGCTTTCATAGATAATCTACATCATCTTTGTAAGCATCTTG
 ATTTTAGAGAAGATGAAACAGATGTAAGCAGTTCTTGGAACTTTATTAATTTAATGGAAGATCCAGA
 CAAAGATGTTAGAGTGGCTTTTAGTGAAATATCAAGCACATATTGGAATCCTTGGACTCTGAAGATGGA
 TTTATAAAGGAGCTTTTTGTCTTAAGAATGAAGGAAGCATATACACATGCCCAAATATCAAGAAATAATG
 AGCTGAAGGATACCTTGATTCTTACAACAGGGATATTGGAAGGGCCGAAAAGGAGATTTGGTACCATT
 TGCACTCTTACACTTATTGCATTGTTGTTATCCAAGTCAAGTCTGTCTCTGGAGCAGCATACACAGAA
 ATTAGAGCTCTGGTTGCAGCTAAAAGTGTAAACTGCAAAGTTTTTTTCAGCCAGTATAAGAAACCCATCT
 GTCAGTTTTTGGTAGAATCCCTTCACTCTAGTCAGATGACAGCACTTCCGAATACTCCATGCCAGAATGC
 TGACGTGCGAAAACAAGATGTGGCTCACCAGAGAGAAATGGCTTAAATACGTTGTCTGAAATTGCCAAC
 GTTTTCGACTTTCCTGATCTTAATCGTTTTCTTACTAGGACATTAACAAGTTCTACTACCTGATCTTGCTG
 CCAAAGCAAGCCCTGCAGCTTCTGCTCTCACTCGAACTTATAGAAAACAATTAATGTCAATCGTAGAGA
 GATTTTAAATAAACAACTTCAAATATATTTTTCTCATTGGTCTGTTCTGTTCCAAAGATGAATTAGAA
 CGTGCCCTTCATTATCTGAAGAATGAAACAGAAATGAACTGGGGAGCCTGTTGAGACAAGATTTCCAAG
 GATTGCATAATGAATTATTGCTGCGTATTGGAGAACAATCAACAGTTTTTAATGGTTTGTCAATACT
 TGCCCTATTTGCATCCAGTGATGATCCATATCAGGGCCCGAGAGATATCATATCACCTGAACTGATGGCT
 GATTATTTACAACCCAAATTGTTGGCATTGTTGGCTTTTTTAAACATGCAGTTACTGAGCTCTAGTGTG
 GCATTGAAGATAAGAAAATGGCCTTGAACAGTTTGTGATGCTTTGATGAAGTTAATGGGACCCAAACATG
 CAGTTCTGTGAGGTGAAGATGATGACCACACTGAGAAGTGGCCTTCGATTCAAGGATGATTTTCCTGAA
 TTGTGTTGCAGAGCTTGGGACTGCTTTGTTGCTGCTGGATCATGCTTGTCTGGGCTCCCTTCTCAGTC
 ATGTAATAGTAGCTTTGTTACCTCTTATACACATCCAGCCTAAAGAACTGCAGCTATCTCCACTACCT
 CATAATTGAAAACAGGGATGCTGTGCAAGATTTCTTTCATGAAATATATTTTTTACCTGATCATCCAGAA
 TTAATAAAGATAAAAAGCCGTTCTCCAGGAATACAGAAAGGAGACCTCTGAGAGCACTGATCTTCAGACAA
 CTCTTCAGCTCTCTATGAAGGCCATTCAACATGAAAATGTGATGTTTCGATTTCATGCTCTTACAAGCTT
 GAAGGAAACCTTGTATAAAAATCAGGAAAACCTGATAAAGTATGCAACAGACAGTGAACAGTAGAACCT
 ATATCTCACAGTTGGTGACAGTGTCTTTGAAAGGTTGCCAAGATGCAAACCTCTCAAGCTCGGTTGCTCT
 GTGGGGAATGTTAGGGGAATGGGGCCGATAGATCCAGGTCGATTAGATTTCTCAACAACCTGAACTCA
 AGAAAAGATTTACATTTGTGACTGGAGTAGAAGATTCAAGCTTGCCTATGGATTATTGATGGAGCTA
 ACAAGAGCTTACCTTGCATGCTGATAAATAGCCGAGCTCAAGATTCAGCTGCCTATGCCATTGAGGAGT
 TGCTTTCTATTTGACTGTAGAGAGATGGAGACCAACGGCCAGGTCAACCAATTGTGGAGGAGATTTCC
 TGAGCATGTTTCGGGAAATACTAGAACCTCATCTAAATACCAGATACAAGAGTTCTCAGAAGTCAACCGAT
 TGGTCTGGAGTAAAGAAGCCAAATTACTTAAGTAAATGGGTAGTAACTTGCAGAATGGTCAGCATCTT
 GGGCAGGTTATCTTATTACAAAGGTTGACATGATCTTGGCAGTAAAATTTTACCTGCTGTAGCATTAT
 GATGAAGCATGATTTCAAAGTGACCATCTATCTTCCACATATTCTGGTGTATGCTTACTGGGTTGT
 AATCAAGAAGATCAGCAGGAGTTTATGCAGAAATATGGCAGTTCTAAAGCATGACGATCAGCATACCA
 TAAATACCAAGACATTGCATCTGATCTGTGCAACTCAGTACACAGACTGTGTTCTCCATGCTTGACCA
 TCTCACACAGTGGCAAGGCACAAATTTAGGCACTGAAAGCTGAGAAATGTCCACACAGCAAATCAAAC
 AGAAATAAGGTAGACTCAATGGTATCTACTGTGGATTATGAAGACTATCAGAGTGAACCCGTTTTCTAG
 ACCTCATACCCAGGATACTCTGGCAGTAGCTTCTTTTCGCTCCAAAGCATACACACGAGCTGTAATGCA
 CTTTGAATCATTTATTACAGAAAAGAAGCAAATATTCAGGAACATCTTGGATTTTTACAGAAATTTGAT
 GCTGCTATGCATGAACCTGATGGAGTGGCCGAGTCAGTGCAATTAGAAAAGCAGAACCATCTCTAAAAG

AACAGATCCTTGAACATGAAAGCCTTGGCTTGCTGAGGGATGCCACTGCTTGTATGACAGGGCTATTCA
GCTAGAACCAGACCAGATCATTCAATATCATGGTGTAGTAAAGTCCATGTTAGGTCTTGGTCAGCTGTCT
ACTGTTATCACTCAGGTGAATGGAGTGCATGCTAACAGGTCCGAGTGGACAGATGAATTAACACGTACA
GAGTGGAAAGCAGCTTGGAAATGTACAGTGGGATTTGGTGGAAAATATTTGGCAGCAGATGGAAAATC
TACAACATGGAGTGTGAGACTGGGACAGCTATTATTATCAGCCAAAAAAGAGATATCACAGCTTTTTAT
GACTCACTGAAACTAGTGAGAGCAGAACAATTTACCTCTTTCAGCTGCAAGCTTTGAAAGAGGCTCCT
ACCAACGAGGATATGAATATATTGTGAGATTGCACATGTTATGTGAGTTGGAGCATAGCATCAAACCACT
TTTCCAGCATTCTCCAGGTGACAGTTCTCAAGAAGATTCTCTAAACTGGGTAGCTCGACTAGAAATGACC
CAGAATTCCTACAGAGCCAAGGAGCCTATCCTGGCTCTCCGGAGGGCTTTACTAAGCCTCAACAAAAGAC
CAGATTACAATGAAATGGTTGGAGAATGCTGGCTGCAGAGTGCCAGGGTAGCTAGAAAAGGCTGGTACCA
CCAGACAGCCTACAATGCTCTCCTTAATGCAGGGGAATCACGACTCGCTGAACTGTACGTGGAAAGGGCA
AAGTGGCTCTGGTCCAAGGGTGTGTTACCAGGCACTAATTGTTCTTCAAAAAGGTGTTGAATTATGTT
TTCCTGAAATGAAACCCACCTGAGGGTAAGAACATGTTAATCCATGGTCGAGCTATGCTACTAGTGGG
CCGATTTATGGAAGAAACAGCTAACTTTGAAAGCAATGCAATTATGAAAAATATAAGGATGTGACC
TGCTGCCAGAATGGGAGGATGGGCATTTTACCTTGCCAAGTACTATGACAAATGATGCCCATGGTCA
CAGACAACAAAATGGAAGCAAGGTGATCTATCCGGTATATAGTTCTTCAATTTGGCAGATCTCTACA
ATATGAAATCAGTTCATATATCAGTCAATGCCACGAATGTTAACTCTATGGCTTGATTATGGTACAAA
GCATATGAATGGGAAAAGCTGGCCGCTCCGATCGTGTACAAATGAGGAATGATTTGGGTAATAAACA
AGGTTATCACAGAGCATACAACTATTTAGCTCCATATCAATTTTGGTCTTTTTCACAAATGATCTC
TCGAATTTGTCATTCTCACGATGAAGTTTTTGTGCTTGTGATGGAATAATAGCCAAAGTATTTCTAGCC
TATCCTCAACAAGCAATGGATGATGACAGCTGTGCAAAGTCACTTATCCCATGCGTGTGAACAGAT
GCAAGGAAATCCTCAATAAAGCTATTCATATGAAAAATCCTTAGAGAAGTTTGTGGAGATGCAACTCG
ACTCATTTTAAAAATGCTTAAAAAGCTGGTAGAAGAAGCAACATTTAGTGAATCCTCATTCTCTACAAT
CAGTCATGATACCTACACTTCCATCAATTTCTGGGTACCCATGCTAACCATGCTAGCCATGAACCATTTCC
TGGACATTTGGCCTATATTGCAGGGTTTGTGATATGGTGGAAATTTCTTGCTTCTTTCAGAAAACAAA
AAGATTTCTTAAAAAGGCTCAGATGGAAAGTCTACATCATGATGTGTAAGCCAAAAGATGACCTGAGAA
AGGATTGTAGACTAATGGAATTCATTCCTTGATTAATAAGTGTGTAAGAAAAGATGACAGTCTCGTAG
AAGAGAATTCATATTCGAACATATGCAGTATTCCTCAATGATGAATGTGGGATTATTGAATGGGTG
AACAACTGCTGGTTTGGAGACTATTCTGACCAACTATATAAAGAAAAGGAGTGTATATGACAGGAA
AAGAACTTCGCCAGTGTATGCTACCAAAGTCAGCAGCTTTATCTGAAAACTCAAAGTATTCGAGAA
TCTCCTGCCAGGCATCCTCCTATTTTTCATGAGTGGTTTCTGAGAACATTCCTGATCCTACATCATGT
AGTAGATCAGCTTACTGCCGTTCCACTGCAGTAATGTCAATGGTTGGTTATATTCTGGGGCTTGGAGACC
GTCATGGTGAAAAATTTCTTTGATTCTTTGACTGGTGAATGCGTACATGTAGATTTCAATTTGCTTTT
CAATAAGGGGAGAAACCTTTGAAGTTCAGAAAATTTGTCATTTCCGCTGACTCATAATATGGTAAATGGA
ATGGGTCTATGGGAACAGAGGGTCTTTTTCGAAGAGCATGTGAAGTTACAATGAGGCTGATGCGTGATC
AGCGAGAGCCTTAATGAGTGTCTTAAAGACTTTTCTACATGATCCTCTTGTGGAATGGAGTAAACCAGT
GAAAGGGCATTCCAAAGCGCCACTGAATGAACTGGAGAAGTTGTCAATGAAAAGGCCAAGACCCATGTT
CTTGACATTTGAGCAGCGACTACAAGGTGAATCAAGACTCGAAATAGAGTGACAGGACTGCCGTTATCTA
TTGAAGGACATGTGCATTACCTTATACAAGAAGCTACTGATGAAACTTACTATGCCAGATGTATCTTGG
TTGACTCCATATATG

ACGCGTACGCGGCCGCTCGAGCAGAACTCATCTCAGAAGAGGATCTGGCAGCAATGATATCCTGGATT
ACAAGGATGACGACGATAAGGTTTAA

Protein Sequence: >RC224837 representing NM_001184
 Red=Cloning site Green=Tags(s)

MGEHGLELASMIPALRELGSATPEEYNTVVQKPRQILCQFIDRILTDVNVVAVELVKKTDQSPTSVMLLD
 FIQHIMKSSPLMFVNVSGSHEAKGSCIEFSNWIIITRLLRIAATPSCHLLHKKICEVICSLFLFKSKSPA
 IFGVLTKELLQLFEDLVYLHRRNVMGHAVEWPVMSRFLSQLDEHMGYLSAPLQLMSMQNLEFIEVTLT
 TVLTRIIAIVFFRRQELLLWQIGCVLLEYGSPKIKSLAISFLTELFQGLGLPAQPASTFFSSFLELLKHL
 VEMDTDQLKLYEPLSKLIKTLFPFEAEAYRNIEPVYLNMLEKLCVMFEDGVLMLKSDLLKAALCHLL
 QYFLKFPVAGYESALQVRKVYVRNICKALLDVLGIEVDAEYLLGPLYAALKMESMEIEEIQCQTQQENL
 SSNSDGI SPKRRRLSSSLNPSKRAPKQTEEEKHVDMNQKSIKLSALKQKAESLQISLEYSGLKNPVIEML
 EGI AVLQLTALCTVHCSHQNMNCRFTKDCQHKSKKPSVVITWMSLDFYTKVLKSCRSLLESVQKLDLE
 ATIDKVVKIYDALIYMQVNSSFEDHILEDLCGMLSLPWIYSHSDDGCLKLTFFAANLLTSCRISDSYSP
 QAQSRCVFLTLFPRRIFLEWRTAVYNWALQSSHEVIRASCVSQGFILLQQNNSCNRVPKILIDKVKDDS
 DIVKKEFASILGQLVCTLHGMFYLTSSLTEPFSEHGHDVLCRNLKATSQHECSSQLKASVCKPFLFLL
 KKKIPSPVKLAFIDNLHHLCKHLDFREDETDKAVLGTLLNLMEDPKDVRVAFSGNIKHILESLDSEDG
 FIKELFVLRMKEAYTHAQISRNNELKDTLILTTGDI GRAAKGDLVPFALLHLLHCLLSKASVSGAAYTE
 IRALVAASKVQLQSSFSQYKPKICQFLVESLHSSQMTALPNTPCQNADVQRKQDVAHQREMANLTLSEIAN
 VFDFPDLNRFLTRTLQVLLPDLAAKASPAASALIRTLGKQLNVNRREILINNFKYIFSHLVCSCSKDELE
 RALHYLKNETEIELGSLLRQDFQGLHNELLRIGEHYQQVFNGLSILASFSSDDPYQGPDIISPELMA
 DYLPKLLGILAFFNMQLLSSSVGIEDKMALNSMLMMLMGPKHVSSVRVKMMTTLRTGLRFKDDDFPE
 LCCRAWDFVRCLDHACLGSLLSHVIVALLPLIHIQPKETAIFHYLIIENRDAVQDFLHEIYFLPDHPE
 LKKIKAVLQEYRKETSESTDLQTTQLSMKAIQHENVVRIHALTSLKETLYKNQEKLIKAYATDSEVPEP
 IISQLVTVLLKGCQDANSQARLLCGECLGELGADPGRDLDFSTTETQGGKDFTFVTGVEDSSSFAYGLLME
 LTRAYLAYADNSRAQDAAAYAIQELLSIYDCREMETNPGPHQLWRRFPEHVREILEPHLNTRYKSSQKSTD
 WSGVKKPIYL SKLGSNFAEWSASWAGYLITKVRHDLASKIFTCCSIMMKHDFKVTIYLLPHILVYVLLGC
 NQEDQEQVEYAEIMAVLKHDDQHTINTQDIASDLCQLSTQTVFSMLDHLTQWARHKFQALKAKECPHSSKN
 RNKVDMSMVSTVDYEDYQSVTRFLDLIPQDTLAVASFRSKAYTRAVMHFESFITEKKQNIQEHLGFLQKLY
 AAMHEPDGVAGVSAIRKAEP SLKEQILEHESLGLLRDATAACYDRAIQLEPDQIIHYHG VVKSMGLGQLS
 TVITQVNGVHANRSEWTDENLTYRVEAAWKL SQWDLVENYLAADGKSTTWSVRLGQLLLSAKKRDITAFY
 DSLKLVRAEQIVPLSAASFERSYQRGYEYIVRLHMLCELEHSIKPLFQHSPGDSSQEDSLNWARLEMT
 QNSYRAKEPILALRRALLSLNKRDPDYNEMVGEWQLQSARVARKAGHHQTAYNALLNAGESRLAEL YVERA
 KWLWSKGDVHQALIVLQKGVELCFPENETPEEGKNMLIHGRAMLLVGRFMEETANFESNAIMKKYKDVTA
 CLPEWEDGHFYLAKEYDKLMPMVTDNKMEKQGDILIRYIVLHFGRSLQYGNQFIYQSMRMLTLWLDYGTK
 AYEWEKAGRSRDRVQMRNDLGKINKVITEHTNYLAPYQFLTAFSQLISRICSHSDEVFVVLMEIIAKVFLA
 YPQQAMWMMTAVSKSSYPMRVNRCKEILNKAIHMKKSLEKVFVGDATRLTDKLELLECNKPVDSSTLSMS
 THFKMLKKLVEEATFSEILIPLQSVMIPTLPSILGTHANHASHEPFGHWAYIAGFDDMVEILASLQKPK
 KISLKGSDGKFIYIMMCKPKDDLKDCRLMEFNLSINKLCKDAESRRRELHIRTYAVIPLNDECGIIEWV
 NNTAGLRPILTKLYKEKGVYMTGKELRQCM LPKSAALSEKLVFREFLLPRHPPIFHEWFLRTPDPPTSC
 SRSAYCRSTAVMSMVGYILGLGDRHGENILFDSL TGECVHVD FNCLFNKGETFEVPEI VPFRLTHNMVNG
 MGPMGTEGLFRRACEVTMRLMRDQREPLMSVLKTF LHDPLVEWSKPVKGHSKAPLNETGEVYNEKAKTHV
 LDIEQRLQGVIKTRNRVTGLPLSIEGHVHYLIQEATDENLLCQMYLGWTPYM

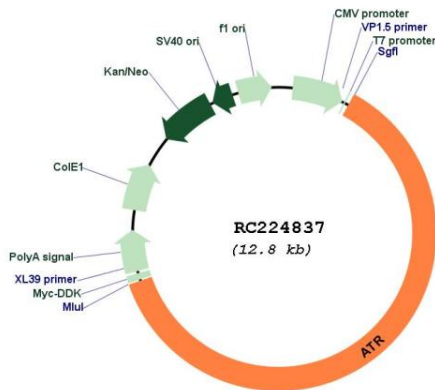
TRTRPLEQKLISEEDLAANDILDYKDDDDKV

Restriction Sites: Sgfl-MluI

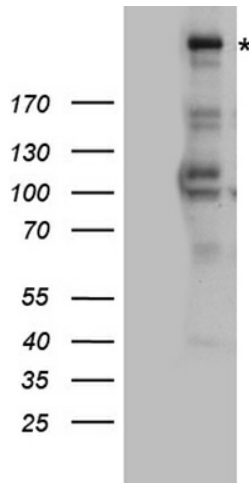
OTI Disclaimer:	<p>Due to the inherent nature of this plasmid, standard methods to replicate additional amounts of DNA in E. coli are highly likely to result in mutations and/or rearrangements. Therefore, OriGene does not guarantee the capability to replicate this plasmid DNA. Additional amounts of DNA can be purchased from OriGene with batch-specific, full-sequence verification at a reduced cost. Please contact our customer care team at custsupport@origene.com or by calling 301.340.3188 option 3 for pricing and delivery.</p> <p>The molecular sequence of this clone aligns with the gene accession number as a point of reference only. However, individual transcript sequences of the same gene can differ through naturally occurring variations (e.g. polymorphisms), each with its own valid existence. This clone is substantially in agreement with the reference, but a complete review of all prevailing variants is recommended prior to use. More info</p>
OTI Annotation:	This clone was engineered to express the complete ORF with an expression tag. Expression varies depending on the nature of the gene.
Components:	The ORF clone is ion-exchange column purified and shipped in a 2D barcoded Matrix tube containing 10ug of transfection-ready, dried plasmid DNA (reconstitute with 100 ul of water).
Reconstitution Method:	<ol style="list-style-type: none"> 1. Centrifuge at 5,000xg for 5min. 2. Carefully open the tube and add 100ul of sterile water to dissolve the DNA. 3. Close the tube and incubate for 10 minutes at room temperature. 4. Briefly vortex the tube and then do a quick spin (less than 5000xg) to concentrate the liquid at the bottom. 5. Store the suspended plasmid at -20°C. The DNA is stable for at least one year from date of shipping when stored at -20°C.
Note:	Plasmids are not sterile. For experiments where strict sterility is required, filtration with 0.22um filter is required.
RefSeq:	NM_001184.4
RefSeq Size:	8265 bp
RefSeq ORF:	7935 bp
Locus ID:	545
UniProt ID:	Q13535
Cytogenetics:	3q23
Protein Families:	Druggable Genome, Protein Kinase
Protein Pathways:	Cell cycle, p53 signaling pathway
MW:	301.2 kDa

Gene Summary:

The protein encoded by this gene is a serine/threonine kinase and DNA damage sensor, activating cell cycle checkpoint signaling upon DNA stress. The encoded protein can phosphorylate and activate several proteins involved in the inhibition of DNA replication and mitosis, and can promote DNA repair, recombination, and apoptosis. This protein is also important for fragile site stability and centrosome duplication. Defects in this gene are a cause of Seckel syndrome 1. [provided by RefSeq, Aug 2017]

Product images:


Circular map for RC224837



HEK293T cells were transfected with the pCMV6-ENTRY control (Cat# [PS100001], Left lane) or pCMV6-ENTRY ATR (Cat# RC224837, Right lane) cDNA for 48 hrs and lysed. Equivalent amounts of cell lysates (5 ug per lane) were separated by SDS-PAGE and immunoblotted with anti-ATR rabbit polyclonal antibody (Cat# [TA890100]).