

Product datasheet for **RC224832**

LRRC43 (NM_001098519) Human Tagged ORF Clone

Product data:

Product Type:	Expression Plasmids
Product Name:	LRRC43 (NM_001098519) Human Tagged ORF Clone
Tag:	Myc-DDK
Symbol:	LRRC43
Mammalian Cell Selection:	Neomycin
Vector:	pCMV6-Entry (PS100001)
E. coli Selection:	Kanamycin (25 ug/mL)



[View online »](#)

ORF Nucleotide Sequence:

>RC224832 representing NM_001098519
 Red=Cloning site Blue=ORF Green=Tags(s)

TTTTGTAATACGACTCACTATAGGGCGGCCGGAATTCGTCGACTGGATCCGGTACCGAGGAGATCTGCC
 GCC**CGGATCGCC**

ATGGAGGCGTCGTACGAGTCCGAGTCCGAGTCCGAGTCTGAGGCCGGCCTGGGACTCAGCGGCCGGGA
 CCGGGACCGTGAGCGCGGCCGTGCGCGAGCACTTGCAGAAAGCTGTGTCTGCGCGAGTCCCGTGCGGTGC
 CGGCAGCTGGAATAAGTCGCGCTTTCTTCTCAAACCTTGGCAACTTGGAGGGAGCTTGCCCCAGAGAG
 GAGGATGTGGTGAAGCCCGGAGAGGAGACGGTGGAGGCCCTGCTGGGCCTGGTCCGACGCCCACTCCC
 CCTGGGCTCTGTGAACAACCTCGAATGCAGAAGACAGTTTCTGAGAGAATTGGCCATCCGGAACCCGCT
 GACGATCACAGACACCTTCTTACTCCTACTTCCGGTCCCTGCGGGTAATAGACAAGAAGGTCACCCTG
 GTGGATAAAGACCTCCTGAAATTTCTAAAGCTGGAGGAGTTGGTACTGAGCGCAATCGAATCAAGGAGG
 TGGATGCCACCAATCTGCCCCCACACTCAAGGTGCTGGAGCTTACGGCAATGAGATCAGCAGCATGGA
 GTGTCTGTGTGCCACCCACCCGCGGCCCTGCAGCACTTGGGGTTAGGCCACAACAACTTCTAGGCCCC
 TTGGAAAGTCTCTACGTACCGCTAATCACTGGCCCAACCTCGTCTCCCTGGACCTGGGCTTCAACGACC
 TGACAGACCTGCAGAGCATGGTACCAGCCTGAGGACCCTCCGGCACCTGCGACTCCTGGTGTGCAGGG
 AAACCCACTGGCCTTGGTGCCTACTACCGCGGCCCTACCATCGACAGCCTGGCCAGCTCTGCGTGTG
 GACGACATCACCGTGTCTCCCAATGAGAAGCATCTTCCGGGGGCTCAGCCTCAATGGCGATCTTTGG
 CACAGGAGGCGCAGTTTGTGGTGACCATCGAAACATCAGAGGAGTCTGGACACCTCTGTCTTAGACCC
 GGAACCCAGGCCGAAAGGCCCTTTCATCACTTACAACATTTACGTGACCTATGATTTTGTAAAGATGAA
 GAAGGCGAAATGAATGAGTCCGCGGGCCTCCTGGCCGAGATCGTCAAGCCCTCTCCAGCTTAGAATTAT
 TAGTTGAGGAATCTCTGAAGAGGTCTGGAAGACGTCATCGAAGACATTGTTGAAGAGTTACTGAAGA
 GGTGGAAGGGTCTCTGGAGTCTGAGGTGGAGGAGTCAGGAGAGTCGGAGCTGTCTGTCTATCTCGGGCCT
 TCGACCATCTTGACAGATGCCGAGGGCCTCTGCAGAAGAGCTGGCCAAGTTGAGGCTGCGTATAGATCCCC
 GGCTCTGCCCGTCCCAGGGACTGTCTCTTCCAGCACTGCCACAAGCCCTGGGCTGAGGTCATCCCTG
 CAGTTACGAGATGCAGCACTCTCTCAGGGACCTGGTCCCACTGAAGGCCTTCTGCTGGCGGGACCACC
 GTGACCATCGTGGAGGAGAAGATTCTCTCCTGGCCTGTGGTGCTACCTGCTGTTGACAGTCCCCTGTCTG
 CCAAGAAAGGAAAGGGGAGAAAGACAAGAAAGGGAAGGAGAAAGACAGGACGGGAAAGGAGAGAAAGA
 GCCGCCAAGGAGTGGAAGGTGCTGAAGAAGAAGAAAGAGCCGCCAAGGAGCTCCGGCAGGACCCCCC
 ATCCTCCAGGTGCTGGGCCGGGCTGGTATCCTGGAGCCCCTGCTCGCCGGGAGCCCTGGTGTCCA
 CCGTGTGCAACTTCGGCGTGGTCCGCACATTGACATCTGACAGGCTGACGTTGGCCAGGGATTCAAGAA
 GATTAAGAAAGTTGCCAAAAAGAAAAGCCGAAAGCCGTATTCCGATCTACGAAGGCGATTACCACCT
 GAGCCCCGACCGTAGAGGTGCAGATCCAGCTGAACCAAGTCCCGCTCGGCGGAGGAGGCTCTGCGCATGT
 TCGCCGTG

ACGCGTACGCGGCCGCTCGAGCAGAACTCATCTCAGAAGAGGATCTGGCAGCAATGATATCCTGGATT
 ACAAGGATGACGACGATAAGGTTTAA

Protein Sequence: >RC224832 representing NM_001098519
Red=Cloning site Green=Tags(s)

```
MEASYESESESESEAGPGTQRPGTGTVSAAVREHLRKLCLREFPCGAGSWNKSRLFPTWRTWRELVPRE
EDVVSPEGETVEALLGLVRSRHSPWALLNNSNAEDSFLRELAIRNPLTITDFFFYSYFRSLRVIDKKVTL
VDKDLLKFLKLEELVLSANRIKEVDATNLPPTLKVLELYGNEISSMECLCAHPPAGLQHLGLGHNKLLGP
LESLYVTANHWPNLVSLDLGFNDLTDLQSMVTSRRTLRLRLVQLQGNPLALVPYYRGLTIDSLAQLCVL
DDITVSPNEKHLFRGLSLNGDLLAQEAQFVVTIGNIRGVLDTSVLDPEPRPEGPFITYNYVYTYDFVKDE
EGEMNESAGVLAIEIVKPSPELELLVEESPEEVVEDVIEDIVEEVTEEVEGSLESEVEESGESELSVISGP
STILQMPRASAEEELAKLRLRIDPRLCPSPGTVLFFSTAHPWAEVIPCSEMQHSLRDLVPLKAFLLAGTT
VTIVEEKILSWPVVLPVDSPLSAKKGKGEKDKKGEKDRGTGKEKEPAKEWVLRKKEKPPKELRQDPP
ILQVLGRGLVILEPLLAGLPLVSTVCNFGVVRTLTSDRLTLARDSKKIKKVAKKEKPKAVIPIYEGDYHP
EPLTVEVQIQLNQCRSAEEALRMFAV
```

TRTRPLEQKLISEEDLAANDILDYKDDDDKV

Chromatograms: https://cdn.origene.com/chromatograms/mk8044_e12.zip

Restriction Sites: SgfI-MluI

Cloning Scheme:



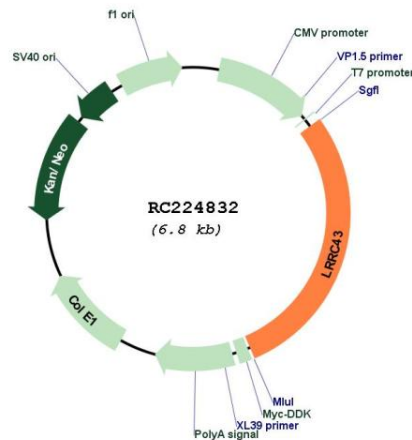
ACCN: NM_001098519

ORF Size: 1968 bp

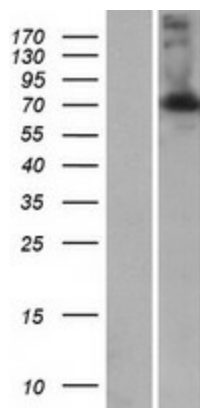
OTI Disclaimer: The molecular sequence of this clone aligns with the gene accession number as a point of reference only. However, individual transcript sequences of the same gene can differ through naturally occurring variations (e.g. polymorphisms), each with its own valid existence. This clone is substantially in agreement with the reference, but a complete review of all prevailing variants is recommended prior to use. [More info](#)

OTI Annotation: This clone was engineered to express the complete ORF with an expression tag. Expression varies depending on the nature of the gene.

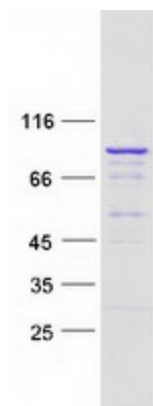
Components:	The ORF clone is ion-exchange column purified and shipped in a 2D barcoded Matrix tube containing 10ug of transfection-ready, dried plasmid DNA (reconstitute with 100 ul of water).
Reconstitution Method:	<ol style="list-style-type: none"> 1. Centrifuge at 5,000xg for 5min. 2. Carefully open the tube and add 100ul of sterile water to dissolve the DNA. 3. Close the tube and incubate for 10 minutes at room temperature. 4. Briefly vortex the tube and then do a quick spin (less than 5000xg) to concentrate the liquid at the bottom. 5. Store the suspended plasmid at -20°C. The DNA is stable for at least one year from date of shipping when stored at -20°C.
RefSeq:	<u>NM_001098519.2</u>
RefSeq Size:	2045 bp
RefSeq ORF:	1971 bp
Locus ID:	254050
UniProt ID:	<u>Q8N309</u>
Cytogenetics:	12q24.31
MW:	72.8 kDa

Product images:


Circular map for RC224832



Western blot validation of overexpression lysate (Cat# [LY420617]) using anti-DDK antibody (Cat# [TA50011-100]). Left: Cell lysates from untransfected HEK293T cells; Right: Cell lysates from HEK293T cells transfected with RC224832 using transfection reagent MegaTran 2.0 (Cat# [TT210002]).



Coomassie blue staining of purified LRRC43 protein (Cat# [TP324832]). The protein was produced from HEK293T cells transfected with LRRC43 cDNA clone (Cat# RC224832) using MegaTran 2.0 (Cat# [TT210002]).