

Product datasheet for **RC224822**

SGLT2 (SLC5A2) (NM_003041) Human Tagged ORF Clone

Product data:

Product Type:	Expression Plasmids
Product Name:	SGLT2 (SLC5A2) (NM_003041) Human Tagged ORF Clone
Tag:	Myc-DDK
Symbol:	SGLT2
Synonyms:	SGLT2
Mammalian Cell Selection:	Neomycin
Vector:	pCMV6-Entry (PS100001)
E. coli Selection:	Kanamycin (25 ug/mL)



[View online »](#)

ORF Nucleotide Sequence:

>RC224822 representing NM_003041
 Red=Cloning site Blue=ORF Green=Tags(s)

TTTTGTAATACGACTCACTATAGGGCGGCCGGAATTCGTCGACTGGATCCGGTACCGAGGAGATCTGCC
 GCC**CGGATCGCC**

ATGGAGGAGCACACAGAGGCAGGCTCGGCACCAGAGATGGGGGCCAGAAGGCCCTGATTGACAATCCTG
 CTGACATCCTAGTCATTGCTGCATATTTCTGCTGGTCATTGGCGTTGGCTTGTGGTCCATGTGCAGAAC
 CAACAGAGGCACTGTGGGCGGCTACTTCTGCGCAGGACGACGATGGTGTGGTGGCCGGTTGGGGCCTCT
 CTCTTCGCCAGCAACATCGGCAGTGGCCACTTTGTGGCCTGGCAGGGACTGGCGCTGCAAGTGGCTTGG
 CTGTTGCTGGATTGAGTGAATGCGCTTTCGTGGTGTGCTACTGGGCTGGCTGTTTGCACCCGTGTA
 CCTGACAGCGGGGTATCACGATGCCACAGTACCTGCGCAAGCGCTTCGGCGGCCGCCATCCGCCTC
 TACCTGTCTGTGCTCTCCCTTTCTGTACATCTCACCAAGATCTCAGTGGACATGTTCTCGGAGCTG
 TATTCATCCAGCAGGCTCTGGGCTGGAACATCTATGCCTCCGTCATCGCGCTTCTGGGCATACCATGAT
 TTACACGGTGACAGGAGGCTGGCCGCGCTGATGTACACGGACACGGTACAGACCTTCGTCATTCTGGGG
 GCGCCTGCATCCTCATGGTTACGCCTCCACGAGGTGGCGGGTATTGGGTCTCTTCGACAAATACC
 TGGGAGCAGCGACTTCGCTGACGGTGTCCGAGGATCCAGCCGTGGGAAACATCTCCAGCTTCGCTATCG
 ACCCCGGCCGACTCCTACCACCTGCTCCGGCACCCCGTGACCGGGGATCTGCCGTGGCCCGCGCTGCTC
 CTCGGACTCACAATCGTCTCGGGCTGGTACTGGTGCAGCGACCAGGTCATCGTGCAGCGCTGCCTGGCCG
 GGAAGAGCCTGACCCACATCAAGGCGGGTGCATCCTGTGTGGGTACCTGAAGCTGACGCCCATGTTTCT
 CATGGTCATGCCAGGCATGATCAGCCGATTCTGTACCCAGACGAGGTGGCGTGCCTGGTGCCTGAGGTG
 TGCAGGCGCGTGTGCGGCACGGAGGTGGCTGCTCCAACATCGCCTACCCGCGGCTCGTCGTGAAGCTCA
 TGCCCAACGGTCTGCGCGGACTCATGCTGGCGGTGATGCTGGCCGCGCTCATGTCCTCGCTGGCCTCCAT
 CTTCAACAGCAGCAGCAGCTCTTACCATGGACATCTACACGCGCCTGCGGCCACGCGCCGCGACCCGC
 GAGCTGCTGCTGGTGGGACGGCTCTGGGTGGTGTTCATCGTGGTAGTGTGGTGGCTGGCTTCCCGTGG
 TGCAGGCGGCACAGGGCGGGCAGCTCTTCGATTACATCCAGGCAGTCTCTAGCTACCTGGCACCCCGCT
 GTCCGCGCTTCTCGTGTGGCGCTTTCGTGCCGCGCTTAATGAGCAGGGCGCCTTCTGGGGACTCATC
 GGGGGCTGTGATGGGCTGGCAGCCTGATTCCCGAGTTCTCCTTCGGCTCGGGCAGCTGTGTGCAGC
 CCTCGGCGTGCCAGCTTCTCTGCGGCGTGCCTACTACTTCGCCATTGTGCTGTTCTTCTGCTC
 TGGCCTCCTCACCTCACGGTCTCCCTGTGCACCGCGCCATCCCAGAAAGCACCTCCACCGCCTGGTC
 TTCAGTCTCCGCATAGCAAGGAGGAACGGGAGGACCTGGATGCTGATGAGCAGCAAGGCTCCTCACTCC
 CTGTACAGAATGGGTGCCAGAGAGTGCCATGGAGATGAATGAGCCCCAGGCCCGGCACCAAGCCTCTT
 CCGCCAGTGCCTGCTCTGGTTTTGTGGAATGAGCAGAGGTGGGGTGGGCAGTCTCCGCCCTTACCCAG
 GAGGAGGCAGCGGCAGCAGCCAGGCGGCTGGAGGACATCAGCGAGGACCCGAGCTGGGCCGTGTGGTCA
 ACCTCAATGCCCTGCTCATGATGGCAGTGGCCGTGTTCTCTGGGGCTTCTATGCC

ACGCGTACGCGGCCGCTCGAGCAGAACTCATCTCAGAAGAGGATCTGGCAGCAATGATATCCTGGATT
 ACAAGGATGACGACGATAAGGTTTAA

Protein Sequence: >RC224822 representing NM_003041
Red=Cloning site Green=Tags(s)

```
MEEHTEAGSAPEMGAQKALIDNPADILVIAAYFLLVIGVGLWSMCRTNRGTVGGYFLAGRSMVWVPVGAS
LFASNIGSGHFVGLAGTGAASGLAVAGFEWNALFVLLLGWLFAPVYLTAGVITMPQYLKRFGGRRIRL
YLSVLSLFLYIFTKISVDMFSGAVFIQQALGWNIIYASVIALLGITMIYTVTGGLAALMYTDTVQTFVILG
GACILMGYAFHEVGGYSGLFDKYLGAATSLTVSEDPVGNISSEFCYRPRPDSYHLLRHPVTGDLWPALL
LGLTIVSGWYWCSDQVIVQRCLAGKSLTHIKAGCILCGYLKLTMPFLMVMPGMSIRILYPDEVACVPEV
CRRVCGTEVGCNSIAYPRLVVKLMPNGLRGLMLAVMLAALMSSLASIFNSSTLFTMDIYTRLRPRAGDR
ELLLVGRLLWVVFIVVSVVAVLPPVQAAQGGQLFDYIQAVSSYLAPPVSAVFLALFVPRVNEQGAFWGLI
GGLLMGLARLIPEFSFGSGSCVQPSACPAFLCGVHYLYFAIVLFFCSGLLTLTVSLCTAPIPRKHLHRLV
FSLRHSKEEREDLDADEQQGSSLPVQNGCPESAMEMNEPQAPAPSLFRQCLLWFCGMSRGGVSPPLTQ
EEAAAAARRLEDISEDPSWARVVNLNALLMMAVAVFLWGFYA
```

TRTRPLEQKLISEEDLANDILDYKDDDDKV

Chromatograms: https://cdn.origene.com/chromatograms/mk6253_g11.zip

Restriction Sites: SgfI-MluI

Cloning Scheme:



ACCN: NM_003041

ORF Size: 2016 bp

OTI Disclaimer: The molecular sequence of this clone aligns with the gene accession number as a point of reference only. However, individual transcript sequences of the same gene can differ through naturally occurring variations (e.g. polymorphisms), each with its own valid existence. This clone is substantially in agreement with the reference, but a complete review of all prevailing variants is recommended prior to use. [More info](#)

OTI Annotation: This clone was engineered to express the complete ORF with an expression tag. Expression varies depending on the nature of the gene.

Components: The ORF clone is ion-exchange column purified and shipped in a 2D barcoded Matrix tube containing 10ug of transfection-ready, dried plasmid DNA (reconstitute with 100 ul of water).

Reconstitution Method:

1. Centrifuge at 5,000xg for 5min.
2. Carefully open the tube and add 100ul of sterile water to dissolve the DNA.
3. Close the tube and incubate for 10 minutes at room temperature.
4. Briefly vortex the tube and then do a quick spin (less than 5000xg) to concentrate the liquid at the bottom.
5. Store the suspended plasmid at -20°C. The DNA is stable for at least one year from date of shipping when stored at -20°C.

Note: Plasmids are not sterile. For experiments where strict sterility is required, filtration with 0.22um filter is required.

RefSeq: [NM_003041.4](#)

RefSeq Size: 2271 bp

RefSeq ORF: 2019 bp

Locus ID: 6524

UniProt ID: [P31639](#)

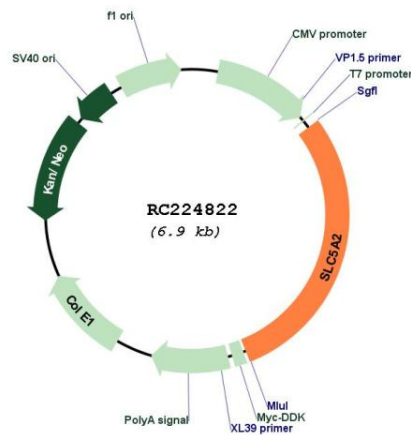
Cytogenetics: 16p11.2

Protein Families: Transmembrane

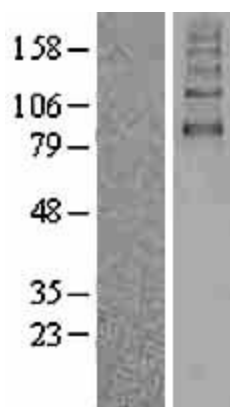
MW: 72.7 kDa

Gene Summary: This gene encodes a member of the sodium glucose cotransporter family which are sodium-dependent glucose transport proteins. The encoded protein is the major cotransporter involved in glucose reabsorption in the kidney. Mutations in this gene are associated with renal glucosuria. Two transcript variants, one protein-coding and one not, have been found for this gene. [provided by RefSeq, Feb 2015]

Product images:



Circular map for RC224822



Western blot validation of overexpression lysate (Cat# [LY418937]) using anti-DDK antibody (Cat# [TA50011-100]). Left: Cell lysates from untransfected HEK293T cells; Right: Cell lysates from HEK293T cells transfected with RC224822 using transfection reagent MegaTran 2.0 (Cat# [TT210002]).