

Product datasheet for RC224812

NCOA1 (NM_003743) Human Tagged ORF Clone

Product data:

Product Type:	Expression Plasmids
Product Name:	NCOA1 (NM_003743) Human Tagged ORF Clone
Tag:	Myc-DDK
Symbol:	NCOA1
Synonyms:	bHLHe42; bHLHe74; F-SRC-1; KAT13A; RIP160; SRC1
Mammalian Cell Selection:	Neomycin
Vector:	pCMV6-Entry (PS100001)
E. coli Selection:	Kanamycin (25 ug/mL)
ORF Nucleotide Sequence:	>RC224812 representing NM_003743 Red=Cloning site Blue=ORF Green=Tags(s)

TTTTGTAATACGACTCACTATAGGGCGGCCGGAATTCGTCGACTGGATCCGGTACCGAGGAGATCTGCC
GCC**CGATCGCC**

ATGAGTGGCCTCGGGACAGTTCATCCGACCCTGCTAACCCAGACTCACATAAGAGGAAAGGATCGCCAT
GTGACACACTGGCATCAAGCACGAAAAGAGGCGCAGGGAGCAAGAAAATAAATATTTAGAAGAACTAGC
TGAGTTACTGTCTGCCAACATTAGTGACATTGACAGCTTGAGTGTAAAACCAGACAAATGCAAGATTTTG
AAGAAAACAGTCGATCAGATACAGCTAATGAAGAGAATGGAACAAGAGAAAATCAACAACATGATGACGATG
TACAGAAATCAGACATCTCATCAAGTAGTCAAGGAGTGATAGAAAAGGAATCCTTGGGACCTCTTCTTTT
GGAGGCTTTGGATGGATTTTCTTTGTTGTGAAGTGTGAAGGGAGAATTGTATTTGTGTCAGAGAATGTA
ACCAGCTACTTAGGTTACAATCAGGAGGAATTAATGAATACCAGCGTCTACAGCATACTGCACGTGGGGG
ATCATGCAGAATTTGTGAAGAATCTGCTACCAAAATCACTAGTAAATGGAGTTTCTTGGCCTCAAGAGGC
AACACGACGAAATAGCCATACCTTTAACTGCAGGATGCTAATTCACCTCCAGATGAGCCAGGGACCGAG
AACCAAGAAGCTTGCCAGCGTTATGAAGTAATGCAGTGTTCCTGTCACAGCCAAAATCAATTCAAG
AGGATGGAGAAGATTTCCAGTCATGTCTGATTTGTATTGCACGGCGATTACCTCGGCCTCCAGCTATTAC
GGGTGTAGAATCCTTTATGACCAAGCAAGATACTACAGGTAATAATCATCTCTATTGATACTAGTTCCTG
AGAGCTGCTGGCAGAAGTGGTTGGGAAGATTTAGTGAGGAAGTGCATTTATGCTTTTTTCCAACCTCAGG
GCAGAGAACCATCTTATGCCAGACAGCTGTTCCAAGAAGTGATGACTCGTGGCACTGCCTCCAGCCCTC
CTATAGATTTCATATTGAATGATGGGACAATGCTTAGCGCCACACCAAGTGTAACCTTTGCTACCCTCAA
AGTCCAGACATGCAACCTTTTCATCATGGGAATTCATATCATCGACAGGGAGCACAGTGGGCTTTCTCCTC
AAGATGACACTAATTCTGGAATGTCAATCCCCGAGTAAATCCCTCGGTCAATCCTAGTATCTCTCCAGC
TCATGGTGTGGCTCGTTCATCCACATTGCCACCATCCAACAGCAACATGGTATCCACCAGAATAAACCGC
CAGCAGAGCTCAGACCTCATAGCAGCAGTCATAGTAATTCTAGCAACAGCCAAGGAAGTTTCGGATGCT
CACCCGGAAGTCAGATTGTAGCCAATGTTGCCTTAAACCAAGGACAGGCCAGTTCACAGAGCAGTAATCC
CTCTTAAACCTCAATAATTCTCTATGGAAGGTACAGGAATATCCCTAGCACAGTTCATGTCTCCAAG



[View online »](#)

AGACAGGTTACTTCTGGATTGGCAACAAGGCCAGGATGCCAAACAATTCCTTTCTCCTAATATTCGA
 CATTAAAGCTCTCCCGTTGGCATGACAAGTAGTGCCTGTAATAATAAACCGATCTTATTCAAACATCCC
 AGTAACATCTTTACAGGGTATGAATGAAGGACCAATAACTCCGTTGGCTTCTCTGCCAGTTCTCCAGTC
 CTCAGGCAGATGAGCTCACAGAATTCACCTAGCAGATTAATATAACAACCAGCAAAGCTGAGTCCAAAG
 ATAACAAAGAGATTGCCTCAATTTAAATGAAATGATTCAATCTGACAACAGCTCTAGTGATGGCAAACC
 TCTGGATTCAAGGCTTCTGCATAACAATGACAGACTTTTCAGATGGAGACAGTAAATACTCTCAAACCAGT
 CACAAACTAGTGCAGCTTTTGCACAACAAGTCCGAACAGCAGTTACGGCATGCTGATATAGACACAAGCT
 GCAAAGATGTCTGTCTTGCACAGGCACTTCCAACCTCTGCCTCTGCTAACTCTTCAGGAGTTCTTGTC
 CTCTTCTCATAGCTCATTGACAGAACGGCATAAAAATTCTACACCGGCTCTTACAGGAGGGTAGCCCTCA
 GATATCACCACCTTGTCTGTGCGAGCCTGATAAAAAGGACAGTGCATCTACTTCTGTGTCAGTGACTGGAC
 AGGTACAAGGAACTCCAGTATAAACTAGAACTGGATGCTTCAAAGAAAAAGAATCAAAGACCATCA
 GCTCTACGCTATCTTTAGATAAAGATGAGAAAGATTTAAGATCAACTCCAAACCTGAGCCTGGATGAT
 GTAAGGTGAAAGTGAAAGAAAGAACAGATGGATCCATGTAATAACAACCCAAACCAATGACCAAAC
 CCACTCCTGAGGAAATAAACTGGAGGCCAGAGCCAGTTTACAGCTGACCTTGACCAGTTTGATCAGTT
 ACTGCCACGCTGGAGAAGGCAGCACAGTTGCCAGGCTTATGTGAGACAGACAGGATGGATGGTGGCGTC
 ACCAGTGTAAACATCAAATCGGAGATCCTGCCAGCTTCACTTCAGTCCGCCACTGCCAGACCCACTTCCA
 GGCTAAATAGATTACCTGAGCTGGAATTGGAAGCAATTGATAACCAATTTGGACAACCAGGAACAGGCGA
 TCAGATTCATGGACAAATAACAGTGCAGCTATAAATCAGAGTAAATCAGAAGACCAGTGTATTAGC
 TCACAATTAGATGAGCTTCTGTGCCACCCACAACAGTAGAAGGGAGAAATGATGAGAAGGCTCTTCTTG
 AACAGCTGGTATCCTTCTTAGTGGCAAAGATGAACTGAGCTAGCTGAAGTACAGAGAGCTCTGGGAAT
 TGACAACTTGTTCAGGGGGTGGATTAGATGTATTATCAGAGAGATTTCCACCACAACAAGCAACGCCA
 CCTTTGATCATGGAAGAAAGACCAACCTTTATCCCAGCCTTACTCTTCTCTCTCTACTGCCAATC
 TCCCTAGCCCTTTCCAAGGCATGGTCAGGCAAAAACCTTCACTGGGGACGATGCCTGTTCAAGTAAACAC
 TCCCCGAGGTGCTTTTTACCTGGCATGGGCATGCAGCCAGGCAAACTCTAAACAGACCTCCGGCTGCA
 CCTAACAGCTTCGACTTCAACTACAGCAGCGATTACAGGGACAACAGCAGTTGATACACAAAAATCGGC
 AAGCTATCTTAAACCAGTTTGCAGCAACTGCTCCTGTTGGCATCAATATGAGATCAGGCATGCAACAGCA
 AATTACACCTCAGCCACCCCTGAATGCTCAAATGTTGGCACAACGTCAGCGGGAAGTGTACAGTCAACAG
 CACCGACAGAGGCAGCTAATACAGCAGCAAAGAGCCATGCTTATGAGGCAGCAAAGCTTTGGGAACAACC
 TCCCTCCCTCATCTGGACTACCAGTTCAAATGGGAACCCCGTCTTCTCAGGGTGTCCACAGCAATT
 CCCCTATCCACAAACTATGGTACAAATCCAGGAACCCACCTGCTTCTACCAGCCGTTTTCACTA
 GCAGCAAATCCTGAAGCATCCTTGGCAAACCGCAACAGCATGGTGAGCAGAGGCATGACAGGAAACATAG
 GAGGACAGTTTGGCACTGGAATCAATCCTCAGATGCAGCAGAATGTCTTCCAGTATCCAGGAGCAGGAAT
 GGTTCCTCAAGGTGAGGCCAAGCTTTGCTCCATCTCTAAGCCCTGGGAGCTCCATGGTGCCGATGCCAATC
 CCTCCTCCTCAGAGTTCTCTGCTCCAGCAAACCTCCACCTGCCTCCGGGTATCAGTACCAGACATGAAGG
 CCTGGCAGCAAGGAGCGATAGGAAACAACAATGTGTTCAAGCTGTCCAGAACCAGCCACGCTGC
 ACAGCCAGGAGTATAACAACAATGAGCATCACCGTTTCCATGGCAGGTGGAAATACGAATGTTCAGAAC
 ATGAACCAATGATGGCCAGATGCAGATGAGCTTTTGCAGATGCCAGGAATGAACACTGTGTGCCCTG
 AGCAGATAAATGATCCCGCACTGAGACACAGGCCTTACTGCAACCAGCTCTCATCCACTGACCTTCT
 CAAAACAGAAGCAGATGGAACCCAGCAGGTGCAACAGGTTCAAGTGTGCTGACGTCCAGTGTACAGTG
 AATCTGGTAGGCGGGACCTTACTGAACAGCCTGGTCCACTGGGAACCTCAAAGCCACGTCAGGAC
 CACAGACCCCCAGGCCAGCAGAAGGCTCCTTCAGCAGCTACTGACTGAA

ACGCGTACGCGGCCGCTCGAGCAGAACTCATCTCAGAAGAGGATCTGGCAGCAAATGATATCCTGGATT
 ACAAGGATGACGACGATAAGGTTTAA

Protein Sequence: >RC224812 representing NM_003743
 Red=Cloning site Green=Tags(s)

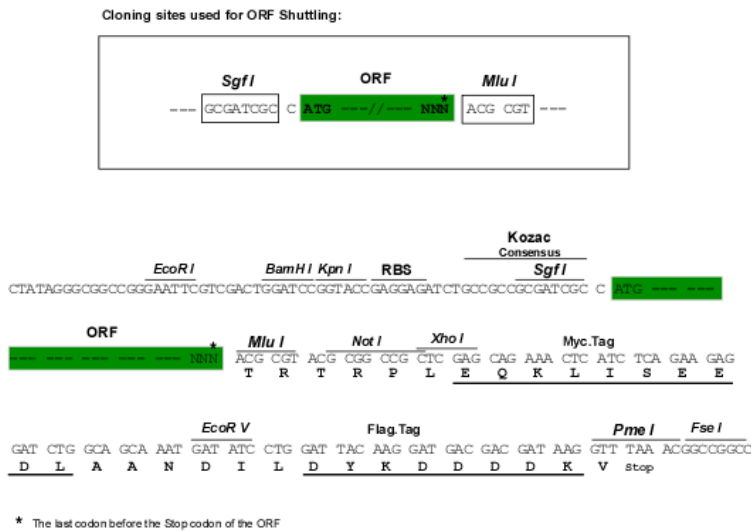
MSGLGSSSDPANPDSHKRKGSPCDTLASSTEKRRREQENKYLEELAELLSANISDIDSLSVKPKCKIL
 KKTVDQIQLMKRMEQEKSTDDDDVQKSDISSSSSQGVIEKESLGPLLLEALDGGFFVFNCEGRIVFVSENV
 TSYLGYNQEELMNTSVYSILHVGDHAEFVKNLIPKSLVNGVWPWQEARTRNSHTFNCRMLIHPPDEPGTE
 NQEACQRYEVMQCFTVSQPKSIQEDGEDFQSCLICIARRLRPPPAITGVESFMTKQD TTGKIISIDTSSL
 RAAGRTGWEDLVRKCIYAFFQPQGREPSYARQLFQEVMTGRGTASSPSYRFILNDGTMLSHTKCKLCYPQ
 SPDMQPFIMGIHIIDREHSGLSPODDTNSGMSIPRVNPSVNPSSI SPAHGVARSSSTLPPSNMNVSTRINR
 QQSSDLHSSSHSNSSNSQGSFGCSPGSQIVANVALNQQGASSQSSNPSLNLNNSPMEGTGISLAQFMSPR
 RQVTSGLATRPRMPNNSFPNISTLSSPVGMTSSACNNNRSYSNIPVTSLQGMNEGPNNVSVGFSASSPV
 LRQMSSQNSPRLNIQPAKAESKDNKEIASILNEMIQSDNSSSDGKPLDSGLLHNNDRSLDGD SKYSQTS
 HKLVQLLTTTAEQQLRHADIDTSCKDVL SCTGTSNSASANS SGGSCPSSHSL TERHKILHRLLEQEGSPS
 DITTL SVEPKKDSASTSVVTGQVQGNSSIKLELDASKKKE SKDHQLLRYLLDKDEKDLRSTPNLSLDD
 VKVKVEKKEQMDPCNTNPTMTKPTPEEIKLEAQSQFTADLDQFDQLLPTLEKAAQLPGLCETDRMDGAV
 TSVTIKSEILPASLQSATARPTSRLNRLPELELEAIDNQFGQP GTGDQIPWNTNTVTAINQSKSEDCQIS
 SQLDELLCPPTTVEGRNDEKALLEQLVSVFLSGKDETELAELDRALGIDKLVQGGGLDVL SERFPQOATP
 PLIMEERNLYSPYSSPSPTANLPSPFQGMVRQKPSLGTMPVQVTPPRGAFSPGMGMQPRQTLNRRPAA
 PNQLRLQLQQRLQGGQQLIHQNRQA ILNQFAATAPVGINMRSGMQQITPQPPLNAQMLAQRQRELYSQQ
 HRQRQLIQQRAML MRQQSF GNNLPPSSGLPVQMGNPRLPQGAPQQFPYPPNYGTNPGTPPASTSPFSQL
 AANPEASLANRNSMVS RGMTGNI GGQFGTGINPQM QNVFYQYPGAGMVPQGEANFAPSLSPGSSMVPMP
 PPPQSSLLQQTTPASGYQSPDMKAWQQAIGNNNVFSQAVQNQPTPAQPGVYNNMSITVSMAGGNTNVQN
 MNPMAQMOMSSLQMPGMNTVCPEQINDPALRHTGL YCNQLSSTDLLKTEADGTQQVQVQVQVADVQCTV
 NLVGGDPYLNQPGPLGTQKPTSGPQTPQAQKSL LQQLL TE

TRTRPLEQKLISEEDLAANDILDYKDDDDKV

Chromatograms: https://cdn.origene.com/chromatograms/mk6168_b08.zip

Restriction Sites: SgfI-MluI

Cloning Scheme:

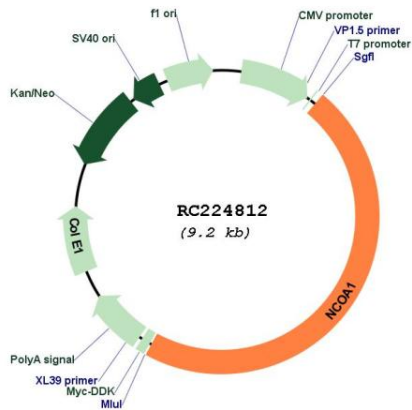


ACCN: NM_003743

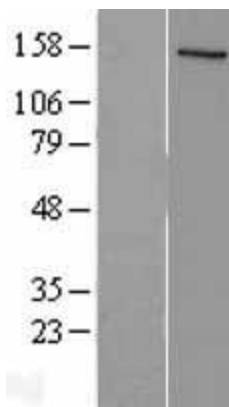
ORF Size: 4323 bp

OTI Disclaimer:	The molecular sequence of this clone aligns with the gene accession number as a point of reference only. However, individual transcript sequences of the same gene can differ through naturally occurring variations (e.g. polymorphisms), each with its own valid existence. This clone is substantially in agreement with the reference, but a complete review of all prevailing variants is recommended prior to use. More info
OTI Annotation:	This clone was engineered to express the complete ORF with an expression tag. Expression varies depending on the nature of the gene.
Components:	The ORF clone is ion-exchange column purified and shipped in a 2D barcoded Matrix tube containing 10ug of transfection-ready, dried plasmid DNA (reconstitute with 100 ul of water).
Reconstitution Method:	<ol style="list-style-type: none">1. Centrifuge at 5,000xg for 5min.2. Carefully open the tube and add 100ul of sterile water to dissolve the DNA.3. Close the tube and incubate for 10 minutes at room temperature.4. Briefly vortex the tube and then do a quick spin (less than 5000xg) to concentrate the liquid at the bottom.5. Store the suspended plasmid at -20°C. The DNA is stable for at least one year from date of shipping when stored at -20°C.
Note:	Plasmids are not sterile. For experiments where strict sterility is required, filtration with 0.22um filter is required.
RefSeq:	NM_003743.5
RefSeq Size:	6895 bp
RefSeq ORF:	4326 bp
Locus ID:	8648
UniProt ID:	Q15788
Cytogenetics:	2p23.3
Domains:	PAS, HLH
Protein Families:	Druggable Genome, Transcription Factors
MW:	156.6 kDa
Gene Summary:	The protein encoded by this gene acts as a transcriptional coactivator for steroid and nuclear hormone receptors. It is a member of the p160/steroid receptor coactivator (SRC) family and like other family members has histone acetyltransferase activity and contains a nuclear localization signal, as well as bHLH and PAS domains. The product of this gene binds nuclear receptors directly and stimulates the transcriptional activities in a hormone-dependent fashion. Alternatively spliced transcript variants encoding different isoforms have been identified. [provided by RefSeq, Jul 2008]

Product images:



Circular map for RC224812



Western blot validation of overexpression lysate (Cat# [LY401228]) using anti-DDK antibody (Cat# [TA50011-100]). Left: Cell lysates from untransfected HEK293T cells; Right: Cell lysates from HEK293T cells transfected with RC224812 using transfection reagent MegaTran 2.0 (Cat# [TT210002]).