

Product datasheet for **RC224811**

PDPN (NM_006474) Human Tagged ORF Clone

Product data:

Product Type:	Expression Plasmids
Product Name:	PDPN (NM_006474) Human Tagged ORF Clone
Tag:	Myc-DDK
Symbol:	PDPN
Synonyms:	AGGRUS; GP36; Gp38; GP40; HT1A-1; OTS8; PA2.26; T1A; T1A-2; T1A2; T11A
Mammalian Cell Selection:	Neomycin
Vector:	pCMV6-Entry (PS100001)
E. coli Selection:	Kanamycin (25 ug/mL)
ORF Nucleotide Sequence:	>RC224811 representing NM_006474 Red=Cloning site Blue=ORF Green=Tags(s)

TTTTGTAATACGACTCACTATAGGGCGGCCGGAATTCGTCGACTGGATCCGGTACCGAGGAGATCTGCCGCC**CGATCGCC**

ATGCTGACTCCGCTCGGAAAGTTCTCAACTGCAAAGTTTGTGTCCGGCTGCCTAGGGTCTGGGAAGCTC
GGGCACCCTCCCTCTCCGGGGCTCTGCTCCCACCCCTCCGGCCCCCACCCTCGCGCTCCTCCAGGCT
GGGCCTGTGGCCGCGGTGCTTTTAATTTCCCCAGCTCAGAATCTTGCTGCTCGGCCCCAGGAGAGC
AACAACTAACGGGAACGATGTGGAAGGTGTGAGTCTGCTCTTCGTTTTGGGAAGCGCGTCTGCTGGG
TCCTGGCAGAAGGAGCCAGCACAGGCCAGCCAGAAGATGACACTGAGACTACAGGTTTGAAGGCGGCGT
TGCCATGCCAGGTGCCGAAGATGATGTGGTGACTCCAGGAACCAGCGAAGACCGCTATAAGTCTGGCTTG
ACAACCTCTGGTGGCAACAAGTGTCAACAGTGTAACAGGCATTTCGATCGAGGATCTGCCAACTTCAGAAA
GCACAGTCCACGCGCAAGAACAAGTCCAAGCGCCACAGCCTCAAACGTGGCCACCAGTCACTCCACGGA
GAAAGTGGATGGAGACACAGACAACAGTTGAGAAAAGATGGTTTGTCAACAGTGACCCTGGTTGGAATC
ATAGTTGGGGTCTTACTAGCCATCGGCTTCATTGGTGGAATCATCGTTGTGGTTATGCGAAAAATGTCGG
GAAGGTAATCGCCC

ACGCGTACGCGGCCGCTCGAGCAGAACTCATCTCAGAAGAGGATCTGGCAGCAAATGATATCCTGGATT
ACAAGGATGACGACGATAAGGTTTAA



[View online »](#)

Protein Sequence: >RC224811 representing NM_006474
Red=Cloning site Green=Tags(s)

MLTPLGKFSTAKFAVRLPRVWEARAPSLSGAPAPTPPAPPPSRSSRLGLWPRCFLIFPQLRILLGPGQES
 NNSTGTMWKVSALLFVLGSASLWVLAEGASTGQPEDDTETTGLEGGVAMPGAEDDVVTPGTSEDRYKSGL
 TTLVATSVNSVTGIRIEDLPTSESTVHAQEQSPSATASNVATSHSTEKVDGDTQTTVKEKDGLSTVTLVGI
 IVGVLLAIGFIGGIIVVMRKMSGRYSP

TRTRPLEQKLISEEDLAANDILDYKDDDDKV

Chromatograms: https://cdn.origene.com/chromatograms/mk6113_h09.zip

Restriction Sites: SgfI-MluI

Cloning Scheme:



ACCN: NM_006474

ORF Size: 714 bp

OTI Disclaimer: The molecular sequence of this clone aligns with the gene accession number as a point of reference only. However, individual transcript sequences of the same gene can differ through naturally occurring variations (e.g. polymorphisms), each with its own valid existence. This clone is substantially in agreement with the reference, but a complete review of all prevailing variants is recommended prior to use. [More info](#)

OTI Annotation: This clone was engineered to express the complete ORF with an expression tag. Expression varies depending on the nature of the gene.

Components: The ORF clone is ion-exchange column purified and shipped in a 2D barcoded Matrix tube containing 10ug of transfection-ready, dried plasmid DNA (reconstitute with 100 ul of water).

Reconstitution Method:

1. Centrifuge at 5,000xg for 5min.
2. Carefully open the tube and add 100ul of sterile water to dissolve the DNA.
3. Close the tube and incubate for 10 minutes at room temperature.
4. Briefly vortex the tube and then do a quick spin (less than 5000xg) to concentrate the liquid at the bottom.
5. Store the suspended plasmid at -20°C. The DNA is stable for at least one year from date of shipping when stored at -20°C.

RefSeq: [NM_006474.3](#)

RefSeq Size: 2828 bp

RefSeq ORF: 489 bp

Locus ID: 10630

UniProt ID: [Q86YL7](#)

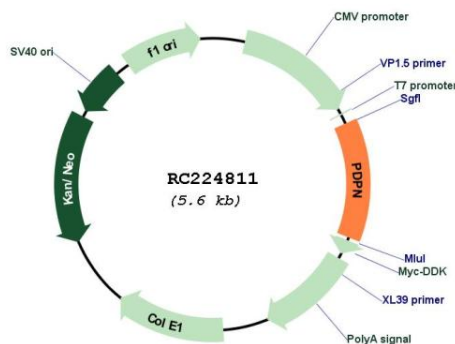
Cytogenetics: 1p36.21

Protein Families: Druggable Genome, Transmembrane

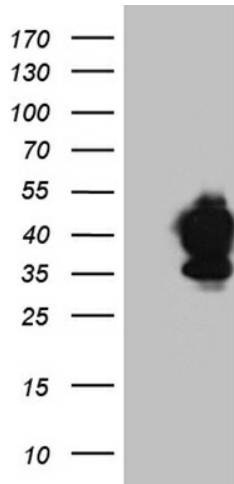
MW: 24.7 kDa

Gene Summary: This gene encodes a type-I integral membrane glycoprotein with diverse distribution in human tissues. The physiological function of this protein may be related to its mucin-type character. The homologous protein in other species has been described as a differentiation antigen and influenza-virus receptor. The specific function of this protein has not been determined but it has been proposed as a marker of lung injury. Alternatively spliced transcript variants encoding different isoforms have been identified. [provided by RefSeq, Jul 2008]

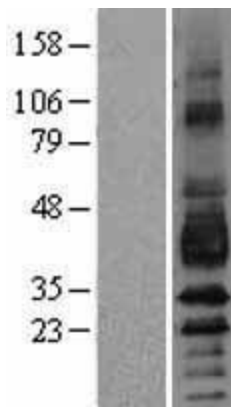
Product images:



Circular map for RC224811



HEK293T cells were transfected with the pCMV6-ENTRY control (Cat# [PS100001], Left lane) or pCMV6-ENTRY PDPN (Cat# RC224811, Right lane) cDNA for 48 hrs and lysed. Equivalent amounts of cell lysates (5 ug per lane) were separated by SDS-PAGE and immunoblotted with anti-PDPN (Cat# [TA811746])(1:500). Positive lysates [LY429296] (100ug) and [LC429296] (20ug) can be purchased separately from OriGene.



Western blot validation of overexpression lysate (Cat# [LY401944]) using anti-DDK antibody (Cat# [TA50011-100]). Left: Cell lysates from untransfected HEK293T cells; Right: Cell lysates from HEK293T cells transfected with RC224811 using transfection reagent MegaTran 2.0 (Cat# [TT210002]).