

## Product datasheet for **RC224808**

### SCP1 (SYCP1) (NM\_003176) Human Tagged ORF Clone

#### Product data:

|                           |   |
|---------------------------|---|
| Product Type:             | Expression Plasmids                             |
| Product Name:             | SCP1 (SYCP1) (NM_003176) Human Tagged ORF Clone |
| Tag:                      | Myc-DDK   |
| Symbol:                   | SCP1  |
| Synonyms:                 | CT8; HOM-TES-14; SCP-1; SCP1                    |
| Mammalian Cell Selection: | Neomycin  |
| Vector:                   | pCMV6-Entry (PS100001)                          |
| E. coli Selection:        | Kanamycin (25 ug/mL)                            |



[View online »](#)

**ORF Nucleotide  
Sequence:**

>RC224808 ORF sequence  
 Red=Cloning site Blue=ORF Green=Tags(s)

TTTTGTAATACGACTCACTATAGGGCGGCCGGAATTCGTGACTGGATCCGGTACCGAGGAGATCTGCC  
 GCC**CGCATCGCC**

ATGAAAAAGCAAAGCCCTTTGCATTGTTCTGACCACCGAGATCAAGCAGCAGTCAGGTGTCTCGGTGA  
 AACCTCAGACCCTGGGAGGCGATTCCACTTTCTCAAGAGTTTCAACAAATGTACTGAAGATGATTTGA  
 GTTCCATTTGCAAAGACTAATCTCTCCAAAAATGGGAAAAACATTGATTCAGATCCTGCTTTACAAAA  
 GTTAATTTCTTGCCCGTCTTGAGCAGGTTGGTAATCTGACTGTCACTATCAGGAAGGACTAAAAGACT  
 CTGATTTGGAGAATTCAGAGGGATTGAGCAGAGTGTATTCAAACGTGATAAGGAGGCTGAAAAGATAAA  
 AAAATGGAAGTAAAGTACAGAAGCTGAAGTGAACAGAAAAGTAAAGTTGCAAGAAAACAGAAAGATA  
 ATGAAGCACAGCGAAAAGCCATTCAGGAAGTCAATTTGAAAATGAAAAAGTAAAGTTGAAATTAGAAG  
 AAGGAATACAAGAAAATAAGATTTAATAAAAGAGAATAATGCCACAAGGCATTTATGTAATCTACTCAA  
 AGAACCTGTGCTAGATCTGCAGAAAAGACAAAAGAAATATGAATATGAACGGGAAGAAACCAGGCAAGTT  
 TATATGGATCTAAATAATAACATTGAGAAAATGATAACAGCTTTTGAGGAACTTCGTGTGCAAGCTGAGA  
 ATTCAGACTGGAAATGCATTTAAGTTAAAGGAAGATTATGAAAAATCCAACACCTTGAACAAGAATA  
 CAAGAAGGAAATAAATGACAAGGAAAAGCAGGTATCACTACTATTGATCCAAATCACTGAGAAAAGAAAAT  
 AAAATGAAAGATTTAACATTTCTGCTAGAGGAATCCAGAGATAAAGTTAATCAATTAGAGGAAAAGACAA  
 AATTACAGAGTGAAGAACTTAAACAATCAATTGAGAAACAGCATCATTGACTAAAGAACTAGAAGATAT  
 TAAAGTGCATTACAAGAAGTGTGAGTACTCAAAGGCTTTAGAGGAAGATTTACAGATAGCAACAAAA  
 ACAATTTGTCAGCTAACTGAAGAAAAGAACTCAAATGGAAGAATCTAATAAAGCTAGAGCTGCTCATT  
 CGTTTGTGTTACTGAATTTGAAACTACTGTCTGAGCTTGAAGAATTATTGAGAACAGAACAGCAAAAG  
 ATTTGAAAAAAAATGAAGATCAATTGAAAAACTTACCATGGAGCTTCAAAAAGAAATCAAGTGAGCTGGAA  
 GAGATGACTAAGCTTACAATAACAAGAAGTAGAACTTGAAGAATTGAAAAAGTCTTGGGAGAAAAGG  
 AACACTTTTATATGAAAAATAACAATTTGAGAAGATTGCTGAAGAATTAAGGAACAGAAACAAGAACT  
 AATTGGTCTTCTCCAAGCCAGAGAGAAAAGTACATGATTTGAAAAACAGTTAACTGCCATTACCACA  
 AGTGAACAGTATTATTCAAAGAGGTTAAAGATCTAAAACTGAGCTTGAACAGGAAAGCTTAAAGATA  
 CTGAATTAACCTCACACTGCAACAAGCTTTCAGTAAAAACAAAGAGCTCACACAGGAAACAAGTGATAT  
 GACCCTAGAACTCAAGAATCAGCAAGAAGATTAATAATAACAAAAAGCAAGAAGAAAGGATGTTGAAA  
 CAAATAGAAAATCTTCAAGAAACAGAAACCAATTAAGAAATGAACTAGAATATGTGAGAGAAGAGCTAA  
 AACAGAAAAGAGATGAAGTTAAATGTAATTTGGACAAGAGTGAAGAAAATTTGTAACAATTTAAGGAAACA  
 AGTTGAAAATAAAAAACAAGTATATTGAAGAATTCAGCAGGAGAATAAGGCCCTGAAAAAAAAGGTACA  
 GCAGAAAGCAAGCAACTGAATGTTTATGAGATAAAGGTCAATAAATTAGAGTTAGAACTAGAAAAGTGCCA  
 AACAGAAAATTTGGAGAAAACACAGACACCTATCAGAAAAGAAATGAGGACAAAAAGATATCAGAAGAAA  
 TCTTTTGGAGAGGTTGAGAAAAGCAAAGTAAATAGCTGATGAAGCAGTAAAAATCAGAAAAGAAATTTGAT  
 AAGCGATGTCAACATAAAATAGCTGAAATGGTAGCACTTATGGAAAAACATAAGCACCAATATGATAAGA  
 TCATTGAAGAAAGAGACTCAGAATTAGGACTTTAAGAGCAAAGAACAAGAACAGTCATCACTGAGAGC  
 ATCTTTGGAGATTGAAGTATCCAATCTCAAAGCTGAAGTCTTTGTCTGTTAAGAAGCAACTTGAAATAGAA  
 AGAGAAGAGAAGGAAAAACTCAAAAAGAGAGGCAAAAAGAAAACACAGCTACTCTTAAAGAAAAAAAAGACA  
 AGAAAACACAAACATTTTTATTGAAAACACCTGAAATTTATTGAAAATTGGATTCTAAAGCAGTTCTTTC  
 ACAAACGTATCTCGAAATTTACATCAGTTGATCATGGCATATCCAAGATAAAAAGAGACTATCTGTGG  
 ACATCTGCCAAAAATACTTTATCTACACCATTGCCAAAGGCATATACAGTGAAGACACCAACAAAACCAA  
 AACTACAGCAAAGAGAAAACCTTGAATATACCCATTGAAGAAAGTAAAAAAAAGAGAAAAATGGCCTTTGA  
 ATTTGATATTAATTCAGATAGTTCAGAACTACTGATCTTTTGGAGTGGTTTCAGAAGAAGAGACATTG  
 AAAACTGTATAGGAACAATAATCCACCAGTCTCTCATCTTTGTGTCAAAACACCAAAAAAGGCCCTT  
 CATCTCTAACACCCCTGGATCTCACTGAAGTTTGGAGCTATAAGAAAATGCGGGAGGACCGTTGGGC  
 TGTAATTGCTAAAATGGATAGAAAAAAAACCTAAAAGAAGCTGAAAAGTTATTTGTT

**ACGCGT**ACGCGGCCGCTCGAGCAGAACTCATCTCAGAAGAGGATCTGGCAGCAAATGATATCCTGGATT  
 ACAAGGATGACGACGATAAGGTTTAA

Protein Sequence: >RC224808 protein sequence  
 Red=Cloning site Green=Tags(s)

```
MEKQKPFALFVPPRSSSSQVSAVKPQTLGGDSTFFKSFNKCTEDDFEPFAKTNLSKNGENIDSDPALQK
VNFLPVLQVGNSDCHYQEGKDSLENSEGLSRVYSKLYKEAEKIKKWKVSTEALRQKESKLQENRKI
IEAQRKAIQELQFGNEKVSCLKLEEGIQENKDLIKENNATRHLNLLKETCARSAEKTKKYEREETRQV
YMDLNNNIEKMITAFEELRVQAENSRLMFMFKLKEDYEKIQHLEQEQYKKEINDKEKQVSLLLIQITEKN
KMKDLTFLLLEESRDKNVQLEEKTKLQSENKQSIKQHHLTKELEDIKVSLQRSVSTQKALEEDLQIATK
TICQLTEEKETQMEESENKARAAHSFVVTEFETTVCSLEELLRTEQQRLEKNEDQLKILTMELQKKSSELE
EMTKLTNNKEVELEELKVKLGEKETLLYENKQFEKIAEELKGTEQELIGLLQAREKEVHDLQIQLTAITT
SEQYYSKEVKDLKTELENEKLNTELTSHCNKLLENKELTQETSDMTLELKNQVEDINNNKKQEERMLK
QIENLQETETQLRNELEYVREELKQKRDEVKCKLQSEENCNLRKQVENKNKYIEELQQENKALKKKGT
AESKQLNVYEIKVKNLELELESQKQFGEITDQYQKEIEDKKISEENLLEEVEKAKVIADAVKLQKEID
KRCQHKIAEMVALMEKHKHQYDKIEERDSELGLYKSKEQEQSSLRASLEIELSNLKAELLSVKKQLEIE
REEKEKLRKREKENTATLKEKKDKKTQTFLLTPEIYWKLDSKAVPSQTVSRNFTSVDHGISKDKRDYLV
TSAKNTLSTPLPKAYTVKTPPKLQRENLNIPTEESKKRKMFAFDINDSDSSETTDLMSVSEETL
KTLYRNNPPASHLCVKTPKKAPSSLTPGSTLKFGAIRKMRDRWAVIAKMDRKKKLKEAEKLFV
```

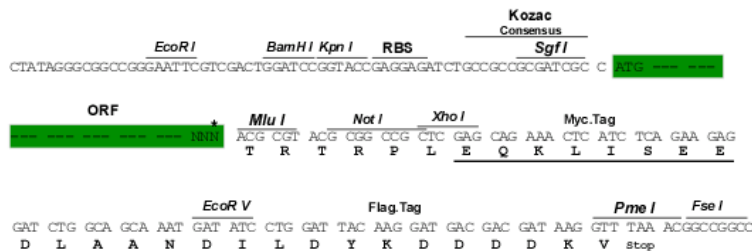
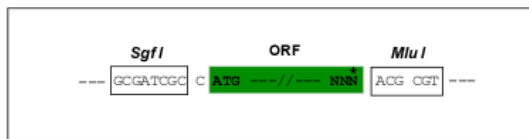
TRTRPLEQKLISEEDLAANDILDYKDDDDKV

Chromatograms: [https://cdn.origene.com/chromatograms/mk6688\\_f11.zip](https://cdn.origene.com/chromatograms/mk6688_f11.zip)

Restriction Sites: SgfI-MluI

Cloning Scheme:

Cloning sites used for ORF Shuttling:



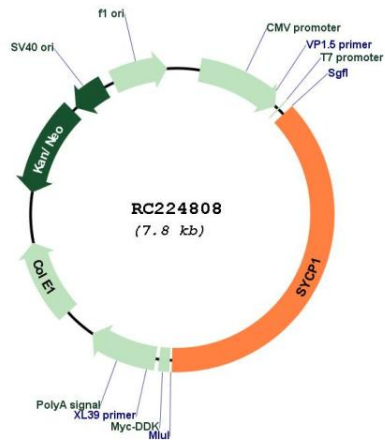
\* The last codon before the Stop codon of the ORF

ACCN: NM\_003176

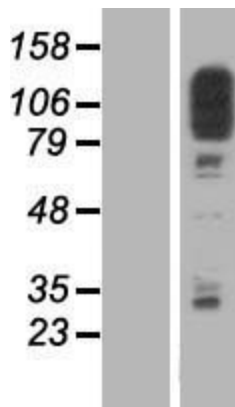
ORF Size: 2928 bp

|                               |   |
|-------------------------------|---|
| <b>OTI Disclaimer:</b>        | The molecular sequence of this clone aligns with the gene accession number as a point of reference only. However, individual transcript sequences of the same gene can differ through naturally occurring variations (e.g. polymorphisms), each with its own valid existence. This clone is substantially in agreement with the reference, but a complete review of all prevailing variants is recommended prior to use. <a href="#">More info</a>  |
| <b>OTI Annotation:</b>        | This clone was engineered to express the complete ORF with an expression tag. Expression varies depending on the nature of the gene.  |
| <b>Components:</b>            | The ORF clone is ion-exchange column purified and shipped in a 2D barcoded Matrix tube containing 10ug of transfection-ready, dried plasmid DNA (reconstitute with 100 ul of water).  |
| <b>Reconstitution Method:</b> | <ol style="list-style-type: none"><li>1. Centrifuge at 5,000xg for 5min.</li><li>2. Carefully open the tube and add 100ul of sterile water to dissolve the DNA.</li><li>3. Close the tube and incubate for 10 minutes at room temperature.</li><li>4. Briefly vortex the tube and then do a quick spin (less than 5000xg) to concentrate the liquid at the bottom.</li><li>5. Store the suspended plasmid at -20°C. The DNA is stable for at least one year from date of shipping when stored at -20°C.</li></ol> |
| <b>RefSeq:</b>                | <a href="#">NM_003176.4</a>   |
| <b>RefSeq Size:</b>           | 3529 bp   |
| <b>RefSeq ORF:</b>            | 2931 bp   |
| <b>Locus ID:</b>              | 6847  |
| <b>UniProt ID:</b>            | <a href="#">Q15431</a>  |
| <b>Cytogenetics:</b>          | 1p13.2  |
| <b>MW:</b>                    | 114.2 kDa   |
| <b>Gene Summary:</b>          | Major component of the transverse filaments of synaptonemal complexes, formed between homologous chromosomes during meiotic prophase. Required for normal assembly of the central element of the synaptonemal complexes. Required for normal centromere pairing during meiosis. Required for normal meiotic chromosome synapsis during oocyte and spermatocyte development and for normal male and female fertility.[UniProtKB/Swiss-Prot Function]   |

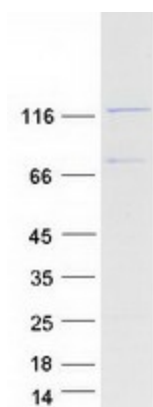
Product images:



Circular map for RC224808



Western blot validation of overexpression lysate (Cat# [LY418865]) using anti-DDK antibody (Cat# [TA50011-100]). Left: Cell lysates from untransfected HEK293T cells; Right: Cell lysates from HEK293T cells transfected with RC224808 using transfection reagent MegaTran 2.0 (Cat# [TT210002]).



Coomassie blue staining of purified SYCP1 protein (Cat# [TP324808]). The protein was produced from HEK293T cells transfected with SYCP1 cDNA clone (Cat# RC224808) using MegaTran 2.0 (Cat# [TT210002]).