

Product datasheet for RC224805

Prostaglandin F2 alpha Receptor (PTGFR) (NM_000959) Human Tagged ORF Clone

Product data:

Product Type:	Expression Plasmids
Product Name:	Prostaglandin F2 alpha Receptor (PTGFR) (NM_000959) Human Tagged ORF Clone
Tag:	Myc-DDK
Symbol:	Prostaglandin F2 alpha Receptor
Synonyms:	FP
Mammalian Cell Selection:	Neomycin
Vector:	pCMV6-Entry (PS100001)
E. coli Selection:	Kanamycin (25 ug/mL)
ORF Nucleotide Sequence:	>RC224805 representing NM_000959 Red=Cloning site Blue=ORF Green=Tags(s)

TTTTGTAATACGACTCACTATAGGGCGGCCGGAATTCGTCGACTGGATCCGGTACCGAGGAGATCTGCC
GCC**CGATCGCC**

ATGTCCATGAACAATCCAAACAGCTAGTGTCTCCTGCAGCTGCGCTTCTTTCAAACACAACCTGCCAGA
CGGAAAACCGGCTTTCCGTATTTTTTTCAGTAATCTTCATGACAGTGGGAATCTTGTCAAACAGCCTTGC
CATCGCCATTCTCATGAAGGCATATCAGAGATTTAGACAGAAGTCCAAGGCATCGTTTCTGCTTTTGGCC
AGTGGCCTGGTAATCACTGATTTCTTTGGCCATCTCATCAATGGAGCCATAGCAGTATTTGTATATGCTT
CTGATAAAGAATGGATCCGCTTTGACCAATCAAATGTCCTTTGCAGTATTTTTGGTATCTGCATGGTGTT
TTCTGGTCTGTGCCACTTCTTCTAGGCAGTGTGATGGCCATTGAGCGGTGATTGGAGTCACAAAACCA
ATATTTCACTTCTACGAAAATTACATCCAAACATGTGAAAATGATGTTAAGTGGTGTGTGCTTGTGCTG
TTTTCATAGCTTTGCTGCCATCCTTGGACATCGAGACTATAAAATTCAGGCGTCGAGGACCTGGTGTT
CTACAACACAGAAGACATCAAAGACTGGGAAGATAGATTTTATCTTCTACTTTTTCTTTCTGGGGCTC
TTAGCCCTTGGTGTTTCATTGTTGTGCAATGCAATCACAGGAATTACACTTTTAAAGATTAATTTAAAA
GTCAGCAGCACAGACAAGGCAGATCTCATCATTGGAAATGGTAATCCAGCTCCTGGCGATAATGTGTGT
CTCCTGTATTTGTTGGAGCCATTTCTGGTTACAATGGCAACATTGGAATAAATGGAAATCATTCTCTG
GAAACCTGTGAAACAACACTTTTTGCTCTCCGAATGGCAACATTGGAATAAATGGAAATCATTCTCTG
ATATTCTTCTACGAAAGGCTGTCCTTAAAGAATCTCTATAAGCTTGCCAGTCAATGCTGTGGAGTGCATGT
CATCAGCTTACATATTTGGGAGCTTAGTCCATTAATAAATTCCTTAAAGGTTGCTGCTATTTCTGAGTCA
CCAGTTGCAGAGAAATCAGCAAGCACC

ACGCGTACGCGGCCGCTCGAGCAGAAACTCATCTCAGAAGAGGATCTGGCAGCAAATGATATCCTGGATT
ACAAGGATGACGACGATAAGGTTTAA



[View online »](#)

Protein Sequence: >RC224805 representing NM_000959
Red=Cloning site Green=Tags(s)

MSMNSKQLVSPAAALLSNTTCQTENRLSVFFSVIFMTVGILSNLSLAIAILMKAYQRFQKSKASFLLLA
 SGLVITDFFGHLINGAIAVFVYASDKEWIRFDQSNVLCISIFGICMVFSGLCPLLLGSVMAIERCIGVTKP
 IFHSTKITSKHVKMMLSGVCLFAVFIALLPILGHRDYKIQASRTWCFYNTEDIKWEDRFYLLLFSLGL
 LALGVSLLCNAITGITLLRVKFKSQQHRQGRSHHLEMIQLLAIMCVSICWSPFLVTMANIGINGNHSL
 ETCETTFLALRMATWNQILDWPVYILLRKAVLKNLYKLASQCCGVHVISLHIWELSSIKNSLKVAAISES
 PVAEKSAST

TRTRPLEQKLISEEDLAANDILDYKDDDDKV

Chromatograms: https://cdn.origene.com/chromatograms/mk6123_a03.zip

Restriction Sites: SgfI-MluI

Cloning Scheme:



ACCN: NM_000959

ORF Size: 1077 bp

OTI Disclaimer: The molecular sequence of this clone aligns with the gene accession number as a point of reference only. However, individual transcript sequences of the same gene can differ through naturally occurring variations (e.g. polymorphisms), each with its own valid existence. This clone is substantially in agreement with the reference, but a complete review of all prevailing variants is recommended prior to use. [More info](#)

OTI Annotation: This clone was engineered to express the complete ORF with an expression tag. Expression varies depending on the nature of the gene.

Components: The ORF clone is ion-exchange column purified and shipped in a 2D barcoded Matrix tube containing 10ug of transfection-ready, dried plasmid DNA (reconstitute with 100 ul of water).

Reconstitution Method:

1. Centrifuge at 5,000xg for 5min.
2. Carefully open the tube and add 100ul of sterile water to dissolve the DNA.
3. Close the tube and incubate for 10 minutes at room temperature.
4. Briefly vortex the tube and then do a quick spin (less than 5000xg) to concentrate the liquid at the bottom.
5. Store the suspended plasmid at -20°C. The DNA is stable for at least one year from date of shipping when stored at -20°C.

RefSeq: [NM_000959.4](#)

RefSeq Size: 3466 bp

RefSeq ORF: 1080 bp

Locus ID: 5737

UniProt ID: [P43088](#)

Cytogenetics: 1p31.1

Domains: 7tm_1

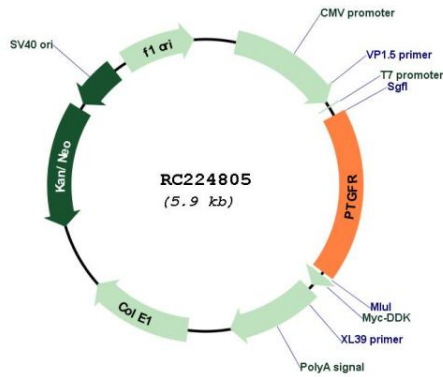
Protein Families: Druggable Genome, GPCR, Transmembrane

Protein Pathways: Calcium signaling pathway, Neuroactive ligand-receptor interaction

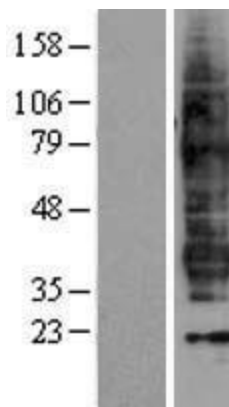
MW: 40.05 kDa

Gene Summary: The protein encoded by this gene is member of the G-protein coupled receptor family. This protein is a receptor for prostaglandin F2-alpha (PGF2-alpha), which is known to be a potent luteolytic agent, and may also be involved in modulating intraocular pressure and smooth muscle contraction in uterus. Knockout studies in mice suggest that the interaction of PGF2-alpha with this receptor may initiate parturition in ovarian luteal cells and thus induce luteolysis. Two transcript variants encoding different isoforms have been found for this gene. [provided by RefSeq, Jul 2008]

Product images:



Circular map for RC224805



Western blot validation of overexpression lysate (Cat# [LY400345]) using anti-DDK antibody (Cat# [TA50011-100]). Left: Cell lysates from untransfected HEK293T cells; Right: Cell lysates from HEK293T cells transfected with RC224805 using transfection reagent MegaTran 2.0 (Cat# [TT210002]).