

Product datasheet for **RC224804**

GAS1 (NM_002048) Human Tagged ORF Clone

Product data:

Product Type:	Expression Plasmids
Product Name:	GAS1 (NM_002048) Human Tagged ORF Clone
Tag:	Myc-DDK
Symbol:	GAS1
Mammalian Cell Selection:	Neomycin
Vector:	pCMV6-Entry (PS100001)
E. coli Selection:	Kanamycin (25 ug/mL)
ORF Nucleotide Sequence:	>RC224804 representing NM_002048 Red=Cloning site Blue=ORF Green=Tags(s)

TTTTGTAATACGACTCACTATAGGGCGGCCGGGAATTCGTCGACTGGATCCGGTACCGAGGAGATCTGCC
GCC**CGATCGCC**

ATGGTGGCCGCGCTGCTGGGCGGCGGGCGGAGGCCCGCGGGGGACAGTGCCGGGCGCCTGGCTGTGCC
TGATGGCGCTGCTGCAGCTGCTGGGCTCGGCGCCGCGGGGATCGGGGCTGGCGCACGGCCCGCCCTCAT
CTGCTGGCAGGCGCTGCTGCAGTGCCAGGGGAGCCGGAGTGCAGCTACGCCTACAACAGTACGCCGAG
GCGTGGCGCGCGGTGCTGGCGCAGCACGGCGGGGGGACGCGCCCGGGGCGCCGCGCCGCTTTCCCGG
CCTCGGCCGCTCTTTCTCGTCGCGCTGGCGCTGCCGAGTCACTGCATCTCGGCCCTATTCAGCTCAA
CCACACGCGCGCGGCCCGCCCTGGAGACTGTGACTGCGCGCAGGACGAGAAGTGAAGTCCACCAAG
CGCGCCATTGAGCCGTGCCTGCCCGGACGAGCGGCGGGCGCGGGCGGCCCGCGCGGGCGGGTCA
TGGGCTGCACCGAGGCCCGGCGGCTGCGACCGGACAGCCGCTGCAACCTGGCGCTGAGCCGCTACCT
GACCTACTGCGGCAAAGTCTTCAACGGGCTGCGCTGCACGGACGAATGCCGCACCGTCAATTGAGGACATG
CTGGCTATGCCAAAGGCGGCGCTGCTCAACGACTGCGTGTGCGACGGCCTCGAGCGGCCATCTGCGAGT
CGGTCAAGGAGAACATGGCCCGCTGTGCTTCGGCGCCGAGCTGGGCAACGGCCCCGCGCAGCAGCGGCTC
GGACGGGGGCTGGACGACTACTACGATGAGGACTACGATGACGAGCAGCGCACCGGGGGCGGGTGGT
GAGCAGCCGCTGGACGACGACGCGGCTCCCGCACCCACCGCGCCCGGGCAGCGGCGCTGCTGCATCGG
GCGGCCGCGGGGACCTGCCCTATGGGCTGGGCGCAGGAGCAGCGCGGGCGGGCGGCGCTTGGCGCCCCG
GGGCGCTGGACCCCACTCGCCTCCATCTTGTGCTGCTGCTTGGGCGGCTCTTT

ACGCGTACGCGGCCGCTCGAGCAGAACTCATCTCAGAAGAGGATCTGGCAGCAAATGATATCCTGGATT
ACAAGGATGACGACGATAAGGTTTAA



[View online »](#)

Protein Sequence: >RC224804 representing NM_002048
Red=Cloning site Green=Tags(s)

MVAALLGGGGEARGGTVPGAWLCLMALLQLLGSAPRGSGLAHGRRLICWQALLQCQGEPECSYAYNQYAE
 ACAPVLAQHGGGDAPGAAAAFPASAASFSSRWRCPSHCISALIQLNHTRRGPALIEDCDCAQDENCKSTK
 RAIEPCLPRTSGGGAGGPGAGGVMGCTEARRRCDRDRSNCNLALSRYLTYCGKVFNGLRCTDECRTVIEDM
 LAMPKAALLNDCVCDGLERPICESVYKENMARLFCGAELGNGPGSSGSDGGLDDYDDEDYDDEQRTGGAGG
 EQPLDDDDGVPHPPRPGSGAAASGGRGDLPYGPGRRSSGGGRLAPRGAWTPLASILLLLGLPLF

TRTRPLEQKLISEEDLAANDILDYKDDDDKV

Chromatograms: https://cdn.origene.com/chromatograms/mg3036_g09.zip

Restriction Sites: Sgfl-MluI

Cloning Scheme:

Cloning sites used for ORF Shuttling:



* The last codon before the Stop codon of the ORF

ACCN: NM_002048

ORF Size: 1035 bp

OTI Disclaimer: The molecular sequence of this clone aligns with the gene accession number as a point of reference only. However, individual transcript sequences of the same gene can differ through naturally occurring variations (e.g. polymorphisms), each with its own valid existence. This clone is substantially in agreement with the reference, but a complete review of all prevailing variants is recommended prior to use. [More info](#)

OTI Annotation: This clone was engineered to express the complete ORF with an expression tag. Expression varies depending on the nature of the gene.

Components: The ORF clone is ion-exchange column purified and shipped in a 2D barcoded Matrix tube containing 10ug of transfection-ready, dried plasmid DNA (reconstitute with 100 ul of water).

Reconstitution Method:

1. Centrifuge at 5,000xg for 5min.
2. Carefully open the tube and add 100ul of sterile water to dissolve the DNA.
3. Close the tube and incubate for 10 minutes at room temperature.
4. Briefly vortex the tube and then do a quick spin (less than 5000xg) to concentrate the liquid at the bottom.
5. Store the suspended plasmid at -20°C. The DNA is stable for at least one year from date of shipping when stored at -20°C.

RefSeq: [NM_002048.3](#)

RefSeq Size: 2828 bp

RefSeq ORF: 1038 bp

Locus ID: 2619

UniProt ID: [P54826](#)

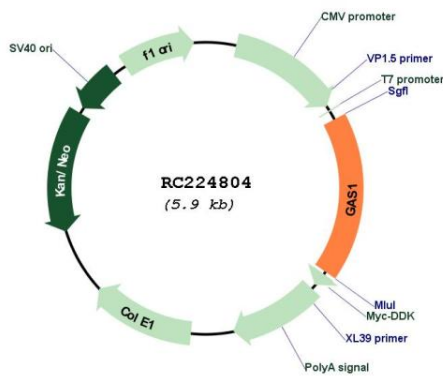
Cytogenetics: 9q21.33

Protein Pathways: Hedgehog signaling pathway

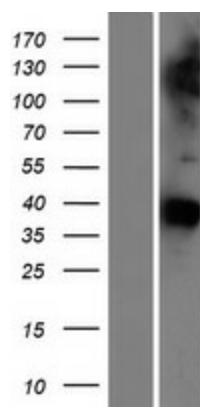
MW: 35.5 kDa

Gene Summary: Growth arrest-specific 1 plays a role in growth suppression. GAS1 blocks entry to S phase and prevents cycling of normal and transformed cells. Gas1 is a putative tumor suppressor gene. [provided by RefSeq, Jul 2008]

Product images:



Circular map for RC224804



Western blot validation of overexpression lysate (Cat# [LY419569]) using anti-DDK antibody (Cat# [TA50011-100]). Left: Cell lysates from untransfected HEK293T cells; Right: Cell lysates from HEK293T cells transfected with RC224804 using transfection reagent MegaTran 2.0 (Cat# [TT210002]).