

Product datasheet for RC224803

PTPRCAP (NM_005608) Human Tagged ORF Clone

Product data:

Product Type:	Expression Plasmids
Product Name:	PTPRCAP (NM_005608) Human Tagged ORF Clone
Tag:	Myc-DDK
Symbol:	PTPRCAP
Synonyms:	CD45-AP; LPAP
Mammalian Cell Selection:	Neomycin
Vector:	pCMV6-Entry (PS100001)
E. coli Selection:	Kanamycin (25 ug/mL)
ORF Nucleotide Sequence:	>RC224803 representing NM_005608 Red=Cloning site Blue=ORF Green=Tags(s)

TTTTGTAATACGACTCACTATAGGGCGGCCGGAATTCGTCGACTGGATCCGGTACCGAGGAGATCTGCC
GCCCGCATCGCC

ATGGCTCTGCCCTGCACCTTAGGGCTCGGGATGCTGCTGGCCCTGCCAGGGGCTTGGGCTCGGGTGGCA
GCGCGGAGGACAGCGTGGGCTCCAGCTCTGTACCCTGTCTGCTGCTGCTGCTGCTCTACTGCTGGC
CACTGGCTAGCACTGGCTGGCGCCCTCAGCCGTGACTCAGGGGCTACTACCACCCGGCCCGCTA
GGTGCCCGCTGTGGGGCCGACGCGGCCCTGCTCTGGGCCAGCCCCAGGTCGCTGGCTGCAGGCC
GAGCTGAGCTGGGTCCACAGACAATGACCTTGAGCGACAGGAGGATGAGCAGGACACAGACTATGACCA
CGTCGCGGATGGTGGCCTGCAGGCTGACCCTGGGGAAGGCGAGCAGCAATGTGGAGAGGCGTCCAGCCCA
GAGCAGGTCCCCGTGCGGGCTGAGGAAGCCAGAGACAGTGACACGAGGGCGACCTGGTCTCGGCTCCC
CAGGACCAGCGAGCGCAGGGGGCAGTGCTGAGGCCCTGCTGAGTGACCTGCACGCCTTTGCTGGCAGCGC
AGCCTGGGATGACAGCGCCAGGGCAGCTGGGGCCAGGGCCTCCATGTCACCGCACTG

ACGCGTACGCGGCCGCTCGAGCAGAACTCATCTCAGAAGAGGATCTGGCAGCAATGATATCCTGGATT
ACAAGGATGACGACGATAAGGTTTAA

Protein Sequence:	>RC224803 representing NM_005608 Red=Cloning site Green=Tags(s)
-------------------	--

MALPCTLGLMLLALPGALGSGGSAEDSVGSSSVTVVLLLLLLLLLATGLALAWRRLSRDSGGYYHPARL
GAALWGRTRRLLWASPPGRWLQARAELGSTDNDLERQEDEQD TDYDHVADGGLQADPGEQEQQCGEASSP
EQVPVRAEEARDSDEGLV LGSPPASAGGSAEALLSDLHAFAGSAAWDD SARAAGGQGLHVTAL

TRTRPLEQKLISEEDLAANDILDYKDDDDKV



[View online »](#)

Chromatograms: https://cdn.origene.com/chromatograms/mk6108_h08.zip

Restriction Sites: SgfI-MluI

Cloning Scheme:



ACCN: NM_005608

ORF Size: 618 bp

OTI Disclaimer: The molecular sequence of this clone aligns with the gene accession number as a point of reference only. However, individual transcript sequences of the same gene can differ through naturally occurring variations (e.g. polymorphisms), each with its own valid existence. This clone is substantially in agreement with the reference, but a complete review of all prevailing variants is recommended prior to use. [More info](#)

OTI Annotation: This clone was engineered to express the complete ORF with an expression tag. Expression varies depending on the nature of the gene.

Components: The ORF clone is ion-exchange column purified and shipped in a 2D barcoded Matrix tube containing 10ug of transfection-ready, dried plasmid DNA (reconstitute with 100 ul of water).

Reconstitution Method:

1. Centrifuge at 5,000xg for 5min.
2. Carefully open the tube and add 100ul of sterile water to dissolve the DNA.
3. Close the tube and incubate for 10 minutes at room temperature.
4. Briefly vortex the tube and then do a quick spin (less than 5000xg) to concentrate the liquid at the bottom.
5. Store the suspended plasmid at -20°C. The DNA is stable for at least one year from date of shipping when stored at -20°C.

RefSeq: [NM_005608.3](#)

RefSeq Size: 917 bp

RefSeq ORF: 621 bp

Locus ID: 5790

UniProt ID: [Q14761](#)

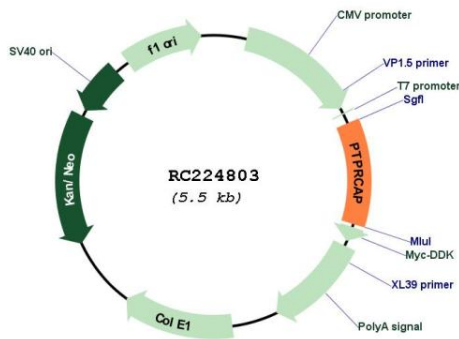
Cytogenetics: 11q13.2

Protein Families: Phosphatase, Transmembrane

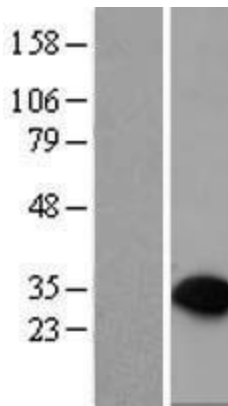
MW: 21 kDa

Gene Summary: The protein encoded by this gene was identified as a transmembrane phosphoprotein specifically associated with tyrosine phosphatase PTPRC/CD45, a key regulator of T- and B-lymphocyte activation. The interaction with PTPRC may be required for the stable expression of this protein. [provided by RefSeq, Jul 2008]

Product images:



Circular map for RC224803



Western blot validation of overexpression lysate (Cat# [LY401718]) using anti-DDK antibody (Cat# [TA50011-100]). Left: Cell lysates from untransfected HEK293T cells; Right: Cell lysates from HEK293T cells transfected with RC224803 using transfection reagent MegaTran 2.0 (Cat# [TT210002]).