

## Product datasheet for **RC224797L4V**

### **KIR2DL2 (NM\_014219) Human Tagged ORF Clone Lentiviral Particle**

#### **Product data:**

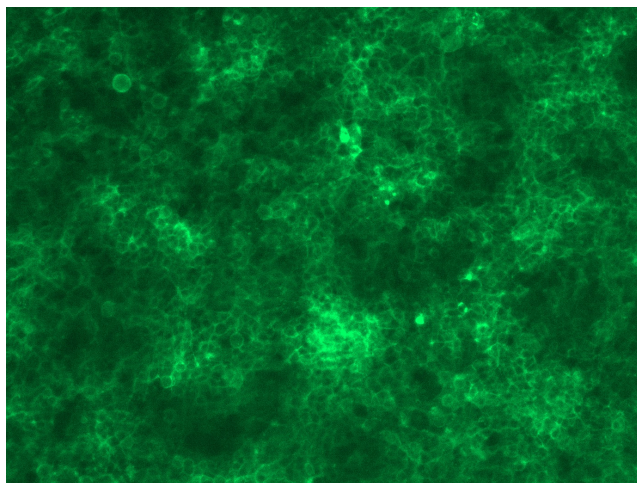
Product Type:	Lentiviral Particles
Product Name:	KIR2DL2 (NM_014219) Human Tagged ORF Clone Lentiviral Particle
Symbol:	KIR2DL2
Synonyms:	CD158b; CD158B1; NKAT-6; NKAT6; p58.2
Mammalian Cell Selection:	Puromycin
Vector:	pLenti-C-mGFP-P2A-Puro (PS100093)
Tag:	mGFP
ACCN:	NM_014219
ORF Size:	1044 bp
ORF Nucleotide Sequence:	The ORF insert of this clone is exactly the same as(RC224797).
OTI Disclaimer:	The molecular sequence of this clone aligns with the gene accession number as a point of reference only. However, individual transcript sequences of the same gene can differ through naturally occurring variations (e.g. polymorphisms), each with its own valid existence. This clone is substantially in agreement with the reference, but a complete review of all prevailing variants is recommended prior to use. <a href="#">More info</a>
OTI Annotation:	This clone was engineered to express the complete ORF with an expression tag. Expression varies depending on the nature of the gene.
RefSeq:	<a href="#">NM_014219.2</a>
RefSeq Size:	1587 bp
RefSeq ORF:	1047 bp
Locus ID:	3803
UniProt ID:	<a href="#">P43627</a>
Cytogenetics:	19q13.4
Protein Families:	Transmembrane



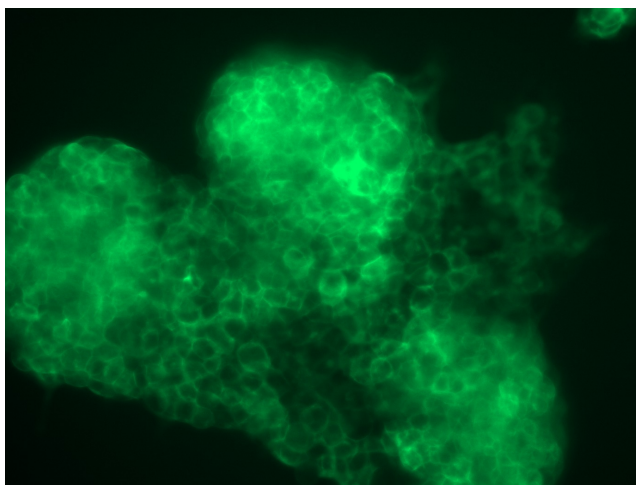
[View online »](#)

<b>Protein Pathways:</b>	Antigen processing and presentation, Graft-versus-host disease, Natural killer cell mediated cytotoxicity
<b>MW:</b>	38.5 kDa
<b>Gene Summary:</b>	Killer cell immunoglobulin-like receptors (KIRs) are transmembrane glycoproteins expressed by natural killer cells and subsets of T cells. The KIR genes are polymorphic and highly homologous and they are found in a cluster on chromosome 19q13.4 within the 1 Mb leukocyte receptor complex (LRC). The gene content of the KIR gene cluster varies among haplotypes, although several "framework" genes are found in all haplotypes (KIR3DL3, KIR3DP1, KIR3DL4, KIR3DL2). The KIR proteins are classified by the number of extracellular immunoglobulin domains (2D or 3D) and by whether they have a long (L) or short (S) cytoplasmic domain. KIR proteins with the long cytoplasmic domain transduce inhibitory signals upon ligand binding via an immune tyrosine-based inhibitory motif (ITIM), while KIR proteins with the short cytoplasmic domain lack the ITIM motif and instead associate with the TYRO protein tyrosine kinase binding protein to transduce activating signals. The ligands for several KIR proteins are subsets of HLA class I molecules; thus, KIR proteins are thought to play an important role in regulation of the immune response. [provided by RefSeq, Jul 2008]

### Product images:



[RC224797L4] was used to prepare Lentiviral particles using [TR30037] packaging kit. HEK293T cells were transduced with RC224797L4V particle to overexpress human KIR2DL2-mGFP fusion protein.



[RC224797L4] was used to prepare Lentiviral particles using [TR30037] packaging kit. HEK293T cells were transduced with RC224797L4V particle to overexpress human KIR2DL2-mGFP fusion protein.