

Product datasheet for **RC224786**

WDR20 (NM_181308) Human Tagged ORF Clone

Product data:

Product Type:	Expression Plasmids
Product Name:	WDR20 (NM_181308) Human Tagged ORF Clone
Tag:	Myc-DDK
Symbol:	WDR20
Synonyms:	Bun107; DMR
Mammalian Cell Selection:	Neomycin
Vector:	pCMV6-Entry (PS100001)
E. coli Selection:	Kanamycin (25 ug/mL)



[View online »](#)

ORF Nucleotide Sequence:

>RC224786 representing NM_181308
 Red=Cloning site Blue=ORF Green=Tags(s)

TTTTGTAATACGACTCACTATAGGGCGGCCGGAATTCGTCGACTGGATCCGGTACCGAGGAGATCTGCC
 GCC**CGCATCGCC**

ATGGCGACGGAGGGAGGAGGAAGGAGATGAACGAGATTAAGACCAATTCACCACCCGGAAGGTCTGT
 ACAAGCTGCTGCCGCACTCGGAGTACAGCCGCCAACCGGGTGCCTTCAACTCGCAGGGATCCAACCC
 TGTCGCGTCTCCTTCGTAACCTCAACGACCAGTCTGGCAACGCGACCGCCTCTGCTTCAATGTGGGC
 CGGGAGCTGACTTCTATATCTACAAGGGGTCCGCAAGAGACTAATAGACAAGTACGAGTTACCTGTG
 TCAAATGGGTTCCCGTTTCGAAAGCCTTTTCTAGTAGCCACTCGAGTGGGAACATGACTTATATAA
 TGTGGAGCACACTTGTGGCACCACAGCCCCACTACCAGCTTCTGAAGCAGGGAGAGAGCTTTGCCGTG
 CACACTTGCAAGACAAATCCACGAGGAACCTCTCCTTAAGTGGACGGTGGGCGAGGGGCCCTCAACG
 AGTTTGTCTTCTCCAGATGGCAAGTTCTTAGCGTGCCTGAGCCAGGACGGGTTTCTCGGGTGTCAA
 CTTTGACTCAGTGGAGCTGCACGGTACGATGAAAAGCTACTTTGGGGCTTGCTGTGTGTGTGCTGGAGC
 CCGGATGGCAAGTACATCGTGACAGGTGGGAGGACGACTTGGTACAGTCTGGTCTTTGTAGACTGCC
 GAGTAATAGCCAGAGGCCACGGGCACAAGTCTGGGTCACTGTTGTAGCGTTTGACCTTATACCTAG
 TGTAGAAGAAGGTGACCTATGGAGTTTGTGGCAGCGATGAGGACTTCCAAGACCTTCTCATTGTGGC
 AGAGATCGAGCAAATAGTACACAGTCCAGGCTCTCCAACGGAACCTACAGACAGCCCGCCCGTAAAGT
 TCACGTATCGGTTTGGTCCGTGGGCCAGGACACACAGCTCTGTTTATGGGACCTTACAGAAGATATCCT
 TTTCCCTACCAACCCCTCTCAAGAGCAAGGACACACAAAATGTCATGAATGCCAGGATCCTCCTGCT
 GGAAGCAATGGGAACAGTGTACAACACCCGGAACTCTGTGCCCTCCTCTGCCACGGTCCAACAGCC
 TTCCAAATTCAGCAGTCTCAAATGCTGGCAGAAAAGCAGTGTGATGGACGGGCAATGCTTCTGGGGT
 CAGCAAAATTTGCAACACTTTCACACTACATGACCGGAAGGAGAGGCCACCACGAGAAAATCACAAGCGAAAT
 CATAGCATGGGACACATTTCTAGCAAGAGCAGTGAACAACTGAATCTAGTTACAAAACAAAACGGACC
 CTGCTAAAACCTGGGAACGCCCTGTGTCTCGAATGGAAGATGTTCCCTTGTAGAGCCGCTGATATG
 TAAAAAGATAGCACATGAGAGACTGACTGTACTAATATTTCTGAAGACTGTATAGTCACTGCTTGTGAG
 GAGGGATTTATTTGCACATGGGAAGGCCTGGTAAAGTGGTAAGTTTTAATCT

ACGCGTACGCGGCCGCTCGAGCAGAACTCATCTCAGAAGAGGATCTGGCAGCAAATGATATCCTGGATT
 ACAAGGATGACGACGATAAGGTTTAA

Protein Sequence:

>RC224786 representing NM_181308
 Red=Cloning site Green=Tags(s)

MATEGGGKEMNEIKTQFTTREGLYKLLPHSEYSRPNRVPFNSQGSNPVRSFVNLNDQSGNGDRLCFNVG
 RELYFYIYKGVKRLIDKSRVTCVWVPGSESLFLVAHSSGNMYLYNVEHTCGTTAPHYQLLKQGESFAV
 HTCKSKSTRNPLLKWTVEGALNEFAFSPDGKFLACVSQDGLRVFNFDVELHGTMKSYFGLLCVCWS
 PDGKYIVTGGEDDLVTVWSFVDCRVIARGHGHKSWVSVAFDPYTTSVEEGDPMESGSDQDFDQLLHFG
 RDRANSTQSRLSKRNSTSRPVSVTYRFGSVGQDTQLCLWDLTEDILFPHQPLSRARTHNTVMNATSPPA
 GSNNGSVTTPGNSVPPPLPRNSLPHSAVSNAGSKSSVMDGAIASGVSKFATLSLHDKRERHHEKDHKRN
 HSMGHISSKSDKLNLVTKTKTDPAKTLGTPLCPMEDVPLEPLICKKIAHERLTVLIFLEDICIVTACQ
 EGFICTWGRPGKVVVSNP

TRTRPLEQKLISEEDLAANDILDYKDDDDKV

Chromatograms:

https://cdn.origene.com/chromatograms/mk8064_b11.zip

Restriction Sites:

Sgfl-Mlul

Cloning Scheme:


ACCN: NM_181308

ORF Size: 1524 bp

OTI Disclaimer: The molecular sequence of this clone aligns with the gene accession number as a point of reference only. However, individual transcript sequences of the same gene can differ through naturally occurring variations (e.g. polymorphisms), each with its own valid existence. This clone is substantially in agreement with the reference, but a complete review of all prevailing variants is recommended prior to use. [More info](#)

OTI Annotation: This clone was engineered to express the complete ORF with an expression tag. Expression varies depending on the nature of the gene.

Components: The ORF clone is ion-exchange column purified and shipped in a 2D barcoded Matrix tube containing 10ug of transfection-ready, dried plasmid DNA (reconstitute with 100 ul of water).

Reconstitution Method:

1. Centrifuge at 5,000xg for 5min.
2. Carefully open the tube and add 100ul of sterile water to dissolve the DNA.
3. Close the tube and incubate for 10 minutes at room temperature.
4. Briefly vortex the tube and then do a quick spin (less than 5000xg) to concentrate the liquid at the bottom.
5. Store the suspended plasmid at -20°C. The DNA is stable for at least one year from date of shipping when stored at -20°C.

RefSeq: [NM_181308.3](#)

RefSeq Size: 2240 bp

RefSeq ORF: 1527 bp

Locus ID: 91833

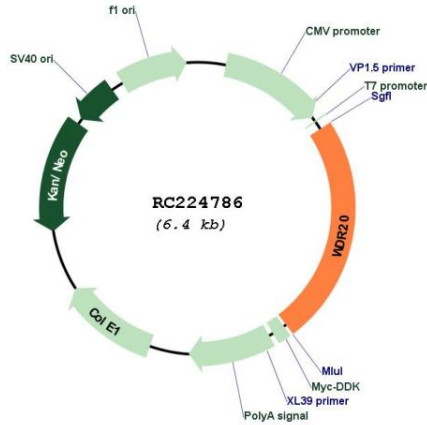
UniProt ID: [Q8TBZ3](#)

Cytogenetics: 14q32.31

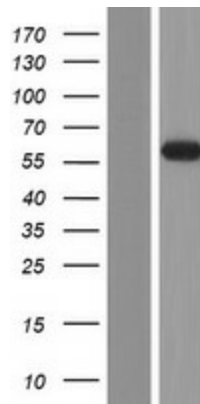
MW: 56 kDa

Gene Summary: This gene encodes a WD repeat-containing protein that functions to preserve and regulate the activity of the USP12-UAF1 deubiquitinating enzyme complex. Multiple alternatively spliced transcript variants have been found for this gene. [provided by RefSeq, Jun 2011]

Product images:



Circular map for RC224786



Western blot validation of overexpression lysate (Cat# [LY405822]) using anti-DDK antibody (Cat# [TA50011-100]). Left: Cell lysates from untransfected HEK293T cells; Right: Cell lysates from HEK293T cells transfected with RC224786 using transfection reagent MegaTran 2.0 (Cat# [TT210002]).