

Product datasheet for **RC224784**

IL36 gamma (IL36G) (NM_019618) Human Tagged ORF Clone

Product data:

Product Type: Expression Plasmids
Product Name: IL36 gamma (IL36G) (NM_019618) Human Tagged ORF Clone
Tag: Myc-DDK
Symbol: IL36 gamma
Synonyms: IL-1F9; IL-1H1; IL-1RP2; IL1E; IL1F9; IL1H1; IL1RP2
Mammalian Cell Selection: Neomycin
Vector: pCMV6-Entry (PS100001)
E. coli Selection: Kanamycin (25 ug/mL)
ORF Nucleotide Sequence: >RC224784 ORF sequence
Red=Cloning site Blue=ORF Green=Tags(s)

TTTTGTAATACGACTCACTATAGGGCGGCCGGAATTCGTCGACTGGATCCGGTACCGAGGAGATCTGCC
GCC**CGATCGCC**

ATGAGAGGCACTCCAGGAGACGCTGATGGTGGAGGAAGGGCCGTCTATCAATCAATGTGTAACCTATTA
CTGGGACTATTAATGATTTGAATCAGCAAGTGTGGACCCTCAGGGTCAGAACCTTGTGGCAGTTCCACG
AAGTGACAGTGTGACCCAGTCACTGTTGCTGTTATCACATGCAAGTATCCAGAGGCTCTTGAGCAAGGC
AGAGGGGATCCCATTTATTTGGGAATCCAGAATCCAGAAATGTGTTTGTATTGTGAGAAGTTGGAGAAC
AGCCACATTGCAGCTAAAAGAGCAGAAGATCATGGATCTGTATGGCCAACCCGAGCCCGTAAACCCCTT
CCTTTTCTACCGTGCCAAGACTGGTAGGACCTCCACCCTTGAGTCTGTGGCCTTCCCGGACTGGTTCATT
GCCTCCTCCAAGAGAGACCAGCCATCATTCTGACTTCAGAACTTGGGAAGTCATACAACACTGCCTTTG
AATTAATATAAATGAC

ACGCGTACGCGGCCGCTCGAGCAGAACTCATCTCAGAAGAGGATCTGGCAGCAAATGATATCCTGGATT
ACAAGGATGACGACGATAAGGTTTAA

Protein Sequence: >RC224784 protein sequence
Red=Cloning site Green=Tags(s)

MRGTPGDADGGGRAVYQSMCKPITGTINDLNQQVWTLQGQNLVAVPRSDSVTPVTVAVITCKYPEALEQG
RGDPIYLGIQNPEMCLYCEKVGEQPTLQLKEQKIMDLYGQPEPVKPFIFYRAKTGRTSTLESVAFDPDFI
ASSKRDPPIILTSELGKSYNTAFELNIND

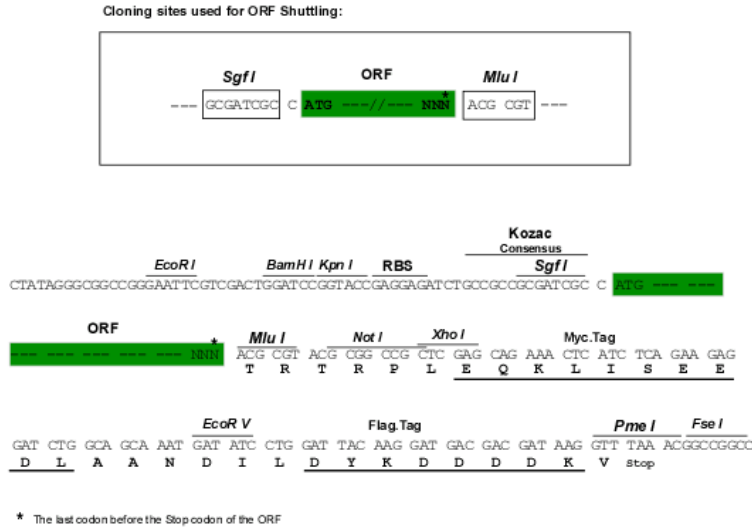
TRTRPLEQKLISEEDLAANDILDYKDDDDKV

Chromatograms: https://cdn.origene.com/chromatograms/mk6450_h10.zip



Restriction Sites: SgfI-MluI

Cloning Scheme:



ACCN: NM_019618

ORF Size: 507 bp

OTI Disclaimer: The molecular sequence of this clone aligns with the gene accession number as a point of reference only. However, individual transcript sequences of the same gene can differ through naturally occurring variations (e.g. polymorphisms), each with its own valid existence. This clone is substantially in agreement with the reference, but a complete review of all prevailing variants is recommended prior to use. [More info](#)

OTI Annotation: This clone was engineered to express the complete ORF with an expression tag. Expression varies depending on the nature of the gene.

Components: The ORF clone is ion-exchange column purified and shipped in a 2D barcoded Matrix tube containing 10ug of transfection-ready, dried plasmid DNA (reconstitute with 100 ul of water).

Reconstitution Method:

1. Centrifuge at 5,000xg for 5min.
2. Carefully open the tube and add 100ul of sterile water to dissolve the DNA.
3. Close the tube and incubate for 10 minutes at room temperature.
4. Briefly vortex the tube and then do a quick spin (less than 5000xg) to concentrate the liquid at the bottom.
5. Store the suspended plasmid at -20°C. The DNA is stable for at least one year from date of shipping when stored at -20°C.

Note: Plasmids are not sterile. For experiments where strict sterility is required, filtration with 0.22um filter is required.

RefSeq: [NM_019618.4](#)

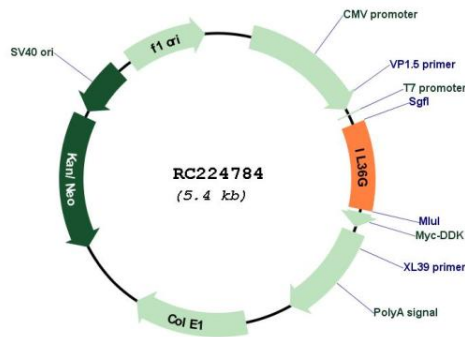
RefSeq Size: 1212 bp

RefSeq ORF: 510 bp

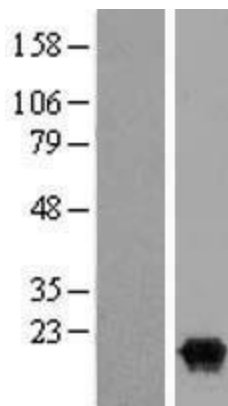
Locus ID: 56300
UniProt ID: [Q9NZH8](#)
Cytogenetics: 2q14.1
Protein Families: Druggable Genome, Secreted Protein
MW: 18.7 kDa

Gene Summary: The protein encoded by this gene is a member of the interleukin 1 cytokine family. The activity of this cytokine is mediated by interleukin 1 receptor-like 2 (IL1RL2/IL1R-rp2), and is specifically inhibited by interleukin 1 family, member 5 (IL1F5/IL-1 delta). Interferon-gamma, tumor necrosis factor-alpha and interleukin 1, beta (IL1B) are reported to stimulate the expression of this cytokine in keratinocytes. The expression of this cytokine in keratinocytes can also be induced by a contact hypersensitivity reaction or herpes simplex virus infection. This gene and eight other interleukin 1 family genes form a cytokine gene cluster on chromosome 2. [provided by RefSeq, May 2019]

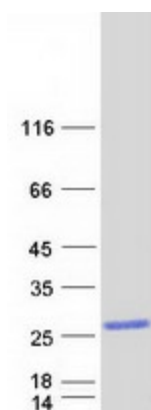
Product images:



Circular map for RC224784



Western blot validation of overexpression lysate (Cat# [LY412705]) using anti-DDK antibody (Cat# [TA50011-100]). Left: Cell lysates from untransfected HEK293T cells; Right: Cell lysates from HEK293T cells transfected with RC224784 using transfection reagent MegaTran 2.0 (Cat# [TT210002]).



Coomassie blue staining of purified IL36G protein (Cat# [TP324784]). The protein was produced from HEK293T cells transfected with IL36G cDNA clone (Cat# RC224784) using MegaTran 2.0 (Cat# [TT210002]).