

Product datasheet for **RC224783**

LSDP5 (PLIN5) (NM_001013706) Human Tagged ORF Clone

Product data:

Product Type:	Expression Plasmids
Product Name:	LSDP5 (PLIN5) (NM_001013706) Human Tagged ORF Clone
Tag:	Myc-DDK
Symbol:	LSDP5
Synonyms:	LSDA5; LSDP5; MLDP; OXPAT
Mammalian Cell Selection:	Neomycin
Vector:	pCMV6-Entry (PS100001)
E. coli Selection:	Kanamycin (25 ug/mL)



[View online »](#)

ORF Nucleotide Sequence:

>RC224783 ORF sequence
 Red=Cloning site Blue=ORF Green=Tags(s)

TTTTGTAATACGACTCACTATAGGGCGGCCGGAATTCGTCGACTGGATCCGGTACCGAGGAGATCTGCC
 GCC**CGGATCGCC**

ATGTCTGAAGAAGAGCGGCTCAGATCCCCAGATCCAGTGTGTGGGAGCAGGACCAGCAGAACGTGGTGC
 AGCGTGTGGTGGCTCTGCCCTGGTCAGGGCCAGTGCACCGCGTCTGCGATGTTTACAGTGCAGCCAA
 GGACAGGCACCCGCTGCTGGGCTCCGCCTGCCCTGGCTGAGAACTGCGTGTGCGGCTGACCACCCGT
 GCCCTGGACCACGCCAGCCGCTGCTCGAGCACCTGCAGCCCCAGCTGGCCACTATGAACAGCCTCGCT
 GCAGGGGCTGGACAAGCTGGAAGAGAAGCTTCCCTTTCTCCAGCAACCTTCGGAGACGGTGGTACCTC
 AGCCAAGGACGTGGTGGCCAGCAGTGTACGGGTGTGGTGGACCTGGCCCGGAGGGGCGCGCTGGAGC
 GTGGAGCTGAAGCGCTCCGTGAGCCATGCTGTGGATGTTGTACTGGAAAAATCAGAGGAGCTGGTGGATC
 ACTTCTGCCCATGACGGAGGAAGAGCTCGCGCACTGGCGGCTGAGGCTGAAGGCCCTGAAGTGGTTC
 GGTGGAGGATCAGAGGAGACAGCAGGGCTACTTTGTGCGCTCGGCTCCCTGTCAGCACGGATCCGCCAC
 CTGGCCTACGAGCACTCTGTGGGAAACTGAGGCAGAGCAAAACCGTGCCAGGACACCCCTGGCCAGC
 TGCAGGAGACGCTGGAGCTGATAGACCACATGCAGTGTGGGTGACCCCCACCGCCCGGCCCTGG
 GAAGGTGCACGAGCTGTGGGGGAATGGGGCCAGCGCCCTCCGGAGAGCCCGCCGGAGCCAGGACAG
 CTGGAGACGCTGGTGTGTCCCGCAGCCTGACCCAGGAGCTGCAGGGCACGGTAGAGGCTCTGGAGTCCA
 GCGTGGGGGCTGCCCGCCGGCGCCAGGAGAAGGTGGCTGAGGTGGCGCAGTGTGGATGCCCTGCA
 GACCGCTTCGCTGATGCCCGCTGCTTCAGGGACGTGCCAGCGCCGCGCTGGCCGAGGGCCGGGTGCG
 GTGGCCACGCGCACGCTGCGTGGACGAGCTGCTGGAGCTGGTGGTGCAGGCCGTGCCCTGCCCTGGC
 TGGTGGACCTTCGCGCCACTTGTGGAGCGACCCGAGCCCTGCCGACCTGGCGACCTGGTGGTGA
 CGAGGTACATCGGGGGCCCTGACCCCGCTGGGCGCACCTGGACTGGCCGGCCAGCAGAGAGCCTGGGAG
 GCAGAGCACAGGACGGGAGTGGGAATGGGATGGGGACAGGATGGTGTGCCGGGACATCTGCGAGC
 AGGAACCCGAGACCCCGCTGCCCGTCAAGCACACCCTGATGCCCGAGCTGGACTTCTG

ACGCGTACGCGGCCGCTCGAGCAGAACTCATCTCAGAAGAGGATCTGGCAGCAAATGATATCCTGGATT
 ACAAGGATGACGACGATAAGGTTTAA

Protein Sequence:

>RC224783 protein sequence
 Red=Cloning site Green=Tags(s)

MSEEEAAQIPRSSVWEQDQNVVQRVVALPLVRATCTAVCDVYSAADRHPLLGSACRLAENCVCGLTTR
 ALDHAQPLLEHLQPQLATMNSLACRGLDKLEELPFLQQPSETVVTSAKDVVASSVTGVVDLARRGRRWS
 VELKRSVSHAVDVVLEKSEELVDHFLPMTEEELAAAEAEAGPEVGSVEDQRRQQGYFVRLGSLSARIRH
 LAYEHSVGLRQSKHRAQDTLAQLQETLELIDHMQCGVTPTAPARPGKVHELWGEWQRPPESSRRRSQAE
 LETLVLRSLTQELQGTVEALESSVRGLPAGAQEKVAEVRSSVDALQAFADARCFRDVPAALAEGRGR
 VAHAHACVDELLELVVQAVPLPWLVGPFAPILVERPEPLPDLADLVDEVI GGPDPRAWHLDWPAQQRAWE
 AEHRDGSNGDGRMGVAGDICEQEPETPSCPVKHTLMPELDF

TRTRPLEQKLISEEDLAANDILDYKDDDDKV

Restriction Sites:

Sgfl-MluI

Cloning Scheme:


ACCN: NM_001013706

ORF Size: 1391 bp

OTI Disclaimer: Due to the inherent nature of this plasmid, standard methods to replicate additional amounts of DNA in E. coli are highly likely to result in mutations and/or rearrangements. Therefore, OriGene does not guarantee the capability to replicate this plasmid DNA. Additional amounts of DNA can be purchased from OriGene with batch-specific, full-sequence verification at a reduced cost. Please contact our customer care team at custsupport@origene.com or by calling 301.340.3188 option 3 for pricing and delivery.

The molecular sequence of this clone aligns with the gene accession number as a point of reference only. However, individual transcript sequences of the same gene can differ through naturally occurring variations (e.g. polymorphisms), each with its own valid existence. This clone is substantially in agreement with the reference, but a complete review of all prevailing variants is recommended prior to use. [More info](#)

OTI Annotation: This clone was engineered to express the complete ORF with an expression tag. Expression varies depending on the nature of the gene.

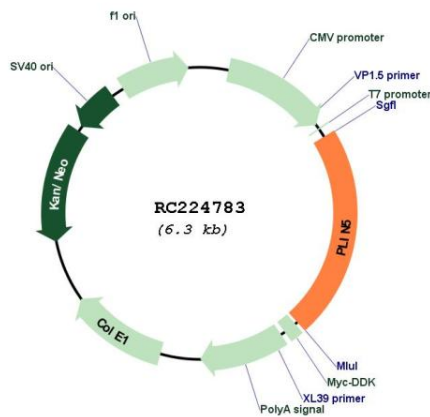
Components: The ORF clone is ion-exchange column purified and shipped in a 2D barcoded Matrix tube containing 10ug of transfection-ready, dried plasmid DNA (reconstitute with 100 ul of water).

- Reconstitution Method:**
1. Centrifuge at 5,000xg for 5min.
 2. Carefully open the tube and add 100ul of sterile water to dissolve the DNA.
 3. Close the tube and incubate for 10 minutes at room temperature.
 4. Briefly vortex the tube and then do a quick spin (less than 5000xg) to concentrate the liquid at the bottom.
 5. Store the suspended plasmid at -20°C. The DNA is stable for at least one year from date of shipping when stored at -20°C.

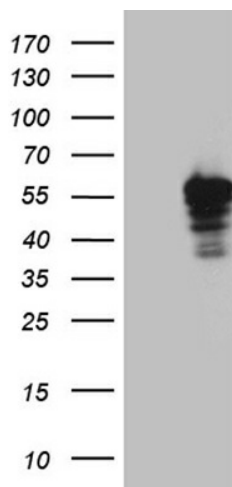
RefSeq: [NM_001013706.2, NP_001013728.2](#)
RefSeq Size: 2445 bp
RefSeq ORF: 1392 bp
Locus ID: 440503
UniProt ID: [Q00G26](#)
Cytogenetics: 19p13.3
MW: 50.8 kDa

Gene Summary: Members of the perilipin family, such as PLIN5, coat intracellular lipid storage droplets and protect them from lipolytic degradation (Dalen et al., 2007 [PubMed 17234449]).[supplied by OMIM, Feb 2010]

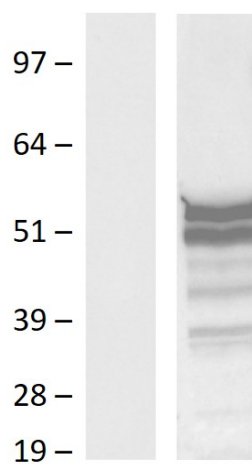
Product images:



Circular map for RC224783



HEK293T cells were transfected with the pCMV6-ENTRY control (Cat# [PS100001], Left lane) or pCMV6-ENTRY PLIN5 (Cat# RC224783, Right lane) cDNA for 48 hrs and lysed. Equivalent amounts of cell lysates (5 ug per lane) were separated by SDS-PAGE and immunoblotted with anti-PLIN5 (Cat# [TA811630])(1:2000). Positive lysates [LY423024] (100ug) and [LC423024] (20ug) can be purchased separately from OriGene.



Western blot validation of overexpression lysate (Cat# [LY423024]) using anti-DDK antibody (Cat# [TA592569]). Left: Cell lysates from untransfected HEK293T cells; Right: Cell lysates from HEK293T cells transfected with RC224783 using transfection reagent PEI.