

## Product datasheet for **RC224768**

### CTAGE5 (MIA2) (NM\_203354) Human Tagged ORF Clone

#### Product data:

Product Type:	Expression Plasmids
Product Name:	CTAGE5 (MIA2) (NM_203354) Human Tagged ORF Clone
Tag:	Myc-DDK
Symbol:	CTAGE5
Synonyms:	CTAGE5; MEA6; MGEA; MGEA6; MGEA11; TALI
Mammalian Cell Selection:	Neomycin
Vector:	pCMV6-Entry (PS100001)
E. coli Selection:	Kanamycin (25 ug/mL)



[View online »](#)

**ORF Nucleotide Sequence:**

>RC224768 representing NM\_203354  
 Red=Cloning site Blue=ORF Green=Tags(s)

TTTTGTAATACGACTCACTATAGGGCGGCCGGAATTCGTGACTGGATCCGGTACCGAGGAGATCTGCC  
 GCC**CGGATCGCC**

ATGGAATTGAAAAGTCCAGAGGAAGAGGTTGTGGCAGCACTGCCTGAAGGTATGAGACCAGATTCTAATC  
 TTTATGGTTTTCCATGGGAATTGGTGATATGTGCAGCTGTTGTTGGATTTTTTGCTGTTCTTTTTTTT  
 GTGGAGAAGTTTTAGATCGGTTAGGAGTCGGCTTTATGTGGGACGAGAGAAAAAGCTTGCTCTAATGCTT  
 TCTGGACTAATTGAAGAAAAAGTAACTACTTAAAAATTTAGCCTTGTCAAAGAGATGAAGGCT  
 ATGAAGTAGAGTCATCTTAAAGGATGCCAGCTTTGAGAAGGAGGCAACAGAAGCACAAAGTTTGGAGGC  
 AACCTGTGAAAAGCTGAACAGGTCCAATTCTGAACTTGAGGATGAAATACTCTGTCTAGAAAAAGAGTTA  
 AAAGAAGAGAAAATCCAAACATTCTGAACAAGATGAATTGATGGCGGATATTTCAAAGGATACAGTCTC  
 TAGAAGATGAGTCAAAATCCCTCAAATCACAAGTAGCTGAAGCCAAAATGACCTTCAAGATATTTCAAAT  
 GAATGAAGAACGACTGAAGATAGCAATAAAGATGCTTTGAATGAAAATCTCAACTTCAGGAAAGCCAG  
 AAACAGCTTTTGCAAGAAGCTGAAGTATGGAAAGAACAAGTGAGTGAACCTAATAAACAGAAAGTAAACAT  
 TTGAAGACTCCAAAGTACATGCAGAACAAGTTCTAAATGATAAAGAAAAGTCAATCAAGACTCTGACTGA  
 ACGCTTGTAAAGATGAAAGATTGGGCTGCTATGCTTGGAGAAGACATAACGGATGATGATAACTTGGAA  
 TTGAAATGAACAGTGAATCGGAAAAATGGTGCTTACTTAGATAATCCTCCAAAAGGAGCTTTGAAAGAAC  
 TGATTCATGCTGCTAAGTTAAATGCTTCTTTAAAAACCTTAGAAGGAGAAAAGAAACCAATTTATATTCA  
 GTTGTCTGAAGTTGATAAAAACAAAGGAAGAGCTTACAGAGCATATTAATAATCTCAGACTGAACAAGCA  
 TCTTTGCAGTCAGAAAACACACATTTTAAAAATGAGAATCAGAAGCTTCAACAGAAAATTAAGTAAATGA  
 CTGAATTATATCAAGAAAATGAAATGAACTCCACAGGAAATTAACAGTAGAGGAAAATTAATCGGTTAGA  
 GAAAGAAGAGAAAATTTCTAAAGTAGATGAAAAGATCAGCCATGCCACTGAAGAGCTGGAGACCTATAGA  
 AAGCGAGCCAAAGATCTTGAAGAAGAAATGGAGAGAACTATTCATTCTTCAAGGGCAGATTATTTCCC  
 ATGAGAAAAAGCACATGATAATTGGTTGGCAGCTCGAATGCTGAAAGAAAACCTCAATGATTTAAGGAA  
 AGAAAAATGCTCACAACAGACAAAAATTAAGTAAACAGAGCTTAAATTTGAACTTTAGAAAAAGATCCT  
 TATGCACTCGATGTTCCAAATACAGCATTGGCAGAGAGCATTCCCATATGGTCCCTCACCATTGGGTT  
 GGCCTTCATCTGAAACAAGAGCTTTTCTCTCCTCCAATTTGTTGGAGGGTCCACTCAGACTCTCACC  
 TTTGCTCCAGGGGGAGGAGGAAGAGGCTCACGAGGCCAGGGAATCCTCTGGACCATCAGATTACCAAT  
 GAAAGAGGAGAATCAAGCTGTGATAGGTTAACCGATCCTCATAGGGCTCCCTCTGACTGGGTCTCTGT  
 CACCTCCATGGGACCAGGACCGTAGGATGATGTTTCTCCGCCAGGACAATCATATCCTGATTCAGCCCT  
 TCTCCCAAAGGCAAGACAGATTTTGTCTAATTCTGGTAGACTGTCTGGACCAGCAGAACTCAGAAGT  
 TTTAATATGCCTTCTTTGGATAAAATGGATGGGTCATGCCTTCAGAAATGGAATCCAGTAGAAATGATA  
 CCAAAGATGATCTTGGTAATTTAAATGTGCCTGATTCATCTCCTGCTGAAAAAGAGCCACTGGCCC  
 TGGCTTTGTTCTCCACCTCTTGTCCAATCAGAGGTCCATTGTTCCAGTGGATGCAAGAGGCCATTC  
 TTGAGAAGAGGACCTCCTTTCCCCCACCTCCTCCAGGAGCCATGTTGGAGCTTCTCGAGATTATTTTC  
 CACCAGGGGATTTCCAGGTCCACCCTGCTCCATTTGCAATGAGAAAATGTCTATCCACCGAGGGGTTT  
 TCCTCCTTACCTTCCCCAAGACCTGGATTTTTCCCCCACCCACATCTGAAGGTAGAAGTGATTC  
 CCCTCAGGTTTGATTCCACCTTCAAATGAGCCTGCTACTGAACATCCAGAACCACAGCAAGAAACC

**ACGCGT**ACGCGGCCGCTCGAGCAGAACTCATCTCAGAAGAGGATCTGGCAGCAATGATATCCTGGATT  
 ACAAGGATGACGACGATAAGGTTTAA

**Protein Sequence:** >RC224768 representing NM\_203354  
Red=Cloning site Green=Tags(s)

MELKSPEEEVVAALPEGMRPDSNLYGFPWELVICA AVVGF FAVLFFLWRSFRSVRSRLYVGREKKLALML  
SGLIEEKSKLLEKFSLVQKEYEGYEVESLKDASFEKEATEAQSLEATCEKLNRSNSELEDEILCLEKEL  
KEEKSKHSEQDELMA DISKRIQSLEDESKSLKSQVAEAKMTFKIFQMNEERLKIAIKDALNENSQLQESQ  
KQLLQEA EVWKEQVSELNKQKVT FEDSKVHAEQVLNDKESH IKTL TERLLKMKDWAAMLGEDITDDDNLE  
LEMNSESENGAYLDNPPKGALKKLIHAAKLNASLKTLEGERNQIYIQLSEVDKTKEELTEHIKNLQTEQA  
SLQSENFH ENENQKLQKLVMTELYQENEMKLRKLTVEENYRLEKEEKLSKVDEKISHATEELETYR  
KRAKDLEEEELERTIHSYQGQIISHEKKAHDNWL AARNAERNLNDLRKENAHRQKLTETELKFELLEKDP  
YALDVPNTAFGREHSPYGPSPLGWPSSETRAFLSPPTLLEGPLRLSPLLPGGGGRGSRGPGNPLDHQITN  
ERGESSCDRLTDPHRAPSDTGSLSPPWDQDRMMFPPPGQSY PDSALPPQRDRFCNSGR LSGPAELRS  
FNMPSLDKMDGSMPSSEMESSRNDTKDDLGNLNP DSSLPAENEATGPGFVPPPLAPIRGPLFPVDARGPF  
LRRGPPFP PPGAMFGASRDYFP PGDFPGPPAPFAMRN VYPPRGFPYLP RPGRGFFPPPHSEGRSEF  
PSGLIPPSNEPATEHPEPQQET

TRTRPLEQKLI SEEDLAANDILDYKDDDDKV

**Chromatograms:** [https://cdn.origene.com/chromatograms/mk8014\\_a02.zip](https://cdn.origene.com/chromatograms/mk8014_a02.zip)

**Restriction Sites:** Sgfl-Mlul

**Cloning Scheme:**


**ACCN:** NM\_203354

**ORF Size:** 2376 bp

**OTI Disclaimer:** The molecular sequence of this clone aligns with the gene accession number as a point of reference only. However, individual transcript sequences of the same gene can differ through naturally occurring variations (e.g. polymorphisms), each with its own valid existence. This clone is substantially in agreement with the reference, but a complete review of all prevailing variants is recommended prior to use. [More info](#)

**OTI Annotation:** This clone was engineered to express the complete ORF with an expression tag. Expression varies depending on the nature of the gene.

**Components:** The ORF clone is ion-exchange column purified and shipped in a 2D barcoded Matrix tube containing 10ug of transfection-ready, dried plasmid DNA (reconstitute with 100 ul of water).

**Reconstitution Method:**

1. Centrifuge at 5,000xg for 5min.
2. Carefully open the tube and add 100ul of sterile water to dissolve the DNA.
3. Close the tube and incubate for 10 minutes at room temperature.
4. Briefly vortex the tube and then do a quick spin (less than 5000xg) to concentrate the liquid at the bottom.
5. Store the suspended plasmid at -20°C. The DNA is stable for at least one year from date of shipping when stored at -20°C.

**RefSeq:** [NM\\_203354.3](#)

**RefSeq Size:** 3605 bp

**RefSeq ORF:** 2379 bp

**Locus ID:** 4253

**UniProt ID:** [Q96PC5](#)

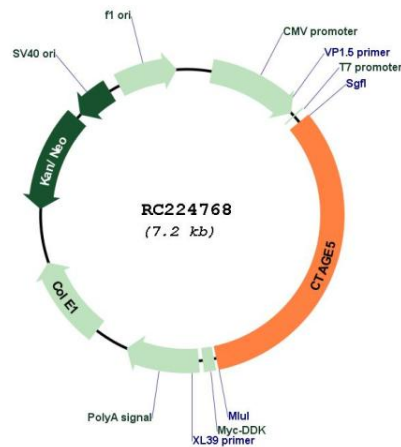
**Cytogenetics:** 14q21.1

**Protein Families:** Transmembrane

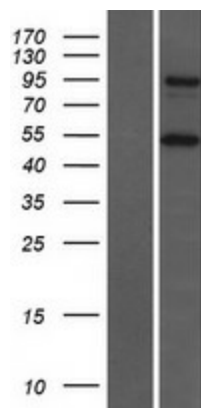
**MW:** 89.5 kDa

**Gene Summary:** This gene encodes s receptor in the endoplasmic reticulum, which plays a role in the export of large pre-chylomicrons and pre-very low density lipoproteins (pre-VLDLs). Three major classes of transcripts are generated from this gene- melanoma inhibitory activity 2-specific transcripts, cTAGE family member 5-specific transcripts and transcripts that include exons from both these transcript species (TANGO1-like or TALI). Additionally, alternative splicing in these transcripts results in multiple transcript variants encoding multiple isoforms. [provided by RefSeq, Sep 2016]

### Product images:



Circular map for RC224768



Western blot validation of overexpression lysate (Cat# [LY404300]) using anti-DDK antibody (Cat# [TA50011-100]). Left: Cell lysates from untransfected HEK293T cells; Right: Cell lysates from HEK293T cells transfected with RC224768 using transfection reagent MegaTran 2.0 (Cat# [TT210002]).