

Product datasheet for RC224765

ROR1 (NM_001083592) Human Tagged ORF Clone

Product data:

Product Type:	Expression Plasmids
Product Name:	ROR1 (NM_001083592) Human Tagged ORF Clone
Tag:	Myc-DDK
Symbol:	ROR1
Synonyms:	dj537F10.1; NTRKR1
Mammalian Cell Selection:	Neomycin
Vector:	pCMV6-Entry (PS100001)
E. coli Selection:	Kanamycin (25 ug/mL)
ORF Nucleotide Sequence:	>RC224765 representing NM_001083592 Red=Cloning site Blue=ORF Green=Tags(s)

TTTTGTAATACGACTCACTATAGGGCGGCCGGAATTCGTCGACTGGATCCGGTACCGAGGAGATCTGCC
GCC**CGATCGCC**

ATGCACCGCCGCGCCGCGGGACGCGCCCGCTCCTGGCGCTGCTGGCCGCGCTGCTGCTGGCCG
CACGCGGGGCTGCTGCCAAGAAACAGAGCTGTCAGTCAGTGTGAATTAGTGCTACCTCATCATGGAA
CATCTCAAGTGAAGTCAACAAAGATTCTTACCTGACCCTTGATGAACCAATGAATAACATCACCAGCTCT
CTGGCCAGACAGCAACTGCACTGCAAAAGTCTCTGGGAATCCACCTCCCACCATCCGCTGGTTCAAAA
ATGATGCTCCTGTGGTCCAGGAGCCCGGAGGCTCTCCTTTCGGTCCACCATCTATGGCTCTCGGCTGCG
GATTAGAAACCTCGACACCACAGACACAGGCTACTTCCAGTGCCTGGCAACAAACGCAAGGAGGTGGTT
TCTTCCACTGGAGTCTTGTGTCAAGTTTGGCCCCCTCCCACTGCAAGTCCAGGATACTCAGATGAGT
ATGAAGAAGATGGATTCTGTGACCCATACAGAGGGATTGCATGTGCAAGATTTATTGGCAACCGCACCGT
CTATATGGAGTCTTGCACATGCAAGGGGAAATAGAAAATCAGATCACAGCTGCCCTTCACTATGATTGGC
ACTTCCAGTCACTTATCTGATAAGTGTCTCAGTTCGCCATTCTTCCCTGTGCCACTATGCCTTCCCGT
ACTGCGATGAAACTTCATCCGTCACAAAGCCCGTACTGTGTGCGGATGAATGTGAAATCCTGGAGAA
TGTCCTGTGTCAAACAGAGTACATTTTGAAGATCAAATCCCATGATTCTGATGAGGCTGAAACTGCCA
AACTGTGAAGATCTCCCCAGCCAGAGAGCCAGAAAGCTGCGAAGTGTATCCGGATTGGAATCCCATGG
CAGATCCTATAAAATAAAATCACAAAGTGTATAACAGCACAGGTGTGGACTACCGGGGACCGTCAGTGT
GACCAAATCAGGGCGCCAGTGCCAGCCATGGAATTTCCAGTATCCCCACACACACTTTTACCAGCCCTT
CGTTTCCAGAGCTGAATGGAGGCCATTCTACTGCCGCAACCCAGGGAATCAAAGGAAGCTCCCTGGT
GCTTACCTTGGATGAAAACCTTAAAGTCTGATCTGTGTGACATCCAGCGTGCGGTA

ACGCGTACGCGGCCGCTCGAGCAGAAACTCATCTCAGAAGAGGATCTGGCAGCAATGATATCCTGGATT
ACAAGGATGACGACGATAAGGTTTAA



[View online >](#)

Protein Sequence: >RC224765 representing NM_001083592
Red=Cloning site Green=Tags(s)

MHRPRRRGTRPPLLALLAALLLAARGAAQETELSVSAELVPTSSWNISSELNKDSYLTLDPEMNNITTS
 LGQTAELHCKVSGNPPPTIRWFKNDAPVVQEPRLSFRSTIYGSRLRIRNLDTTDTGYFQCVATNGKEVV
 SSTGVLVFKFGPPPTASPGYSDEYEDGFCQPYRGIACARFIGNRTVYMESLHMQGEIENQITAAFMTIG
 TSSHLSDKCSQFAIPSLCHYAFPYCDETSVVPKPRDLCRDECEILENVLQTEYIFARSNPILMLRLKLP
 NCEDLPQPESPEAANCIRIGIPMADPINKNHKCYNSTGVDYRGTVSVTKSGRQCQPWNSQYPHTHTFTAL
 RPELNGGHSYCRNPGNQKEAPWCFTLDENFKSDLCDIPACGK

TRTRPLEQKLISEEDLAANDILDYKDDDDKV

Chromatograms: https://cdn.origene.com/chromatograms/mk6503_h04.zip

Restriction Sites: SgfI-MluI

Cloning Scheme:



ACCN: NM_001083592

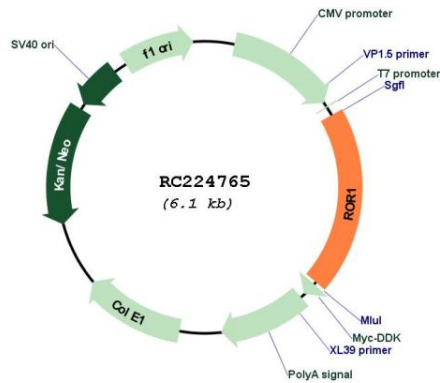
ORF Size: 1179 bp

OTI Disclaimer: Due to the inherent nature of this plasmid, standard methods to replicate additional amounts of DNA in E. coli are highly likely to result in mutations and/or rearrangements. Therefore, OriGene does not guarantee the capability to replicate this plasmid DNA. Additional amounts of DNA can be purchased from OriGene with batch-specific, full-sequence verification at a reduced cost. Please contact our customer care team at custsupport@origene.com or by calling 301.340.3188 option 3 for pricing and delivery.

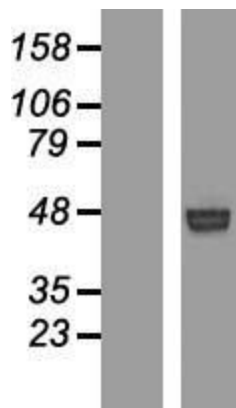
The molecular sequence of this clone aligns with the gene accession number as a point of reference only. However, individual transcript sequences of the same gene can differ through naturally occurring variations (e.g. polymorphisms), each with its own valid existence. This clone is substantially in agreement with the reference, but a complete review of all prevailing variants is recommended prior to use. [More info](#)

OTI Annotation:	This clone was engineered to express the complete ORF with an expression tag. Expression varies depending on the nature of the gene.
Components:	The ORF clone is ion-exchange column purified and shipped in a 2D barcoded Matrix tube containing 10ug of transfection-ready, dried plasmid DNA (reconstitute with 100 ul of water).
Reconstitution Method:	<ol style="list-style-type: none">1. Centrifuge at 5,000xg for 5min.2. Carefully open the tube and add 100ul of sterile water to dissolve the DNA.3. Close the tube and incubate for 10 minutes at room temperature.4. Briefly vortex the tube and then do a quick spin (less than 5000xg) to concentrate the liquid at the bottom.5. Store the suspended plasmid at -20°C. The DNA is stable for at least one year from date of shipping when stored at -20°C.
RefSeq:	NM_001083592.1 , NP_001077061.1
RefSeq Size:	2303 bp
RefSeq ORF:	1182 bp
Locus ID:	4919
UniProt ID:	Q01973
Cytogenetics:	1p31.3
Protein Families:	Druggable Genome, Protein Kinase, Transmembrane
MW:	43.6 kDa
Gene Summary:	This gene encodes a receptor tyrosine kinase-like orphan receptor that modulates neurite growth in the central nervous system. The encoded protein is a glycosylated type I membrane protein that belongs to the ROR subfamily of cell surface receptors. It is a pseudokinase that lacks catalytic activity and may interact with the non-canonical Wnt signalling pathway. This gene is highly expressed during early embryonic development but expressed at very low levels in adult tissues. Increased expression of this gene is associated with B-cell chronic lymphocytic leukaemia. Alternative splicing results in multiple transcript variants encoding different isoforms. [provided by RefSeq, Jun 2012]

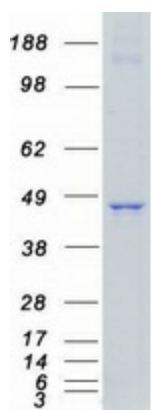
Product images:



Circular map for RC224765



Western blot validation of overexpression lysate (Cat# [LY421225]) using anti-DDK antibody (Cat# [TA50011-100]). Left: Cell lysates from untransfected HEK293T cells; Right: Cell lysates from HEK293T cells transfected with RC224765 using transfection reagent MegaTran 2.0 (Cat# [TT210002]).



Coomassie blue staining of purified ROR1 protein (Cat# [TP324765]). The protein was produced from HEK293T cells transfected with ROR1 cDNA clone (Cat# RC224765) using MegaTran 2.0 (Cat# [TT210002]).