

Product datasheet for RC224759

SORBS1 (NM_001034955) Human Tagged ORF Clone

Product data:

Product Type:	Expression Plasmids
Product Name:	SORBS1 (NM_001034955) Human Tagged ORF Clone
Tag:	Myc-DDK
Symbol:	SORBS1
Synonyms:	CAP; FLAF2; R85FL; SH3D5; SH3P12; SORB1
Mammalian Cell Selection:	Neomycin
Vector:	pCMV6-Entry (PS100001)
E. coli Selection:	Kanamycin (25 ug/mL)
ORF Nucleotide Sequence:	>RC224759 representing NM_001034955 Red=Cloning site Blue=ORF Green=Tags(s)

TTTTGTAATACGACTCACTATAGGGCGGCCGGAATTCGTCGACTGGATCCGGTACCGAGGAGATCTGCC
GCC**CGATCGCC**

ATGAGTCTGAATGTGATGGTGGTTCCAAAGCTGTGATGAATGGCTTGGCACCTGGCAGCAATGGGCAAG
ACAAAGCAACTGCCGACCCTTTACGCGCAGCTCTATTTCTGCTGTTAAAATCATTCTGTGAAGACAGT
GAAAAACGCCCTCAGGCCTAGTTCTCCCTACAGACATGGATCTACAAAAATCTGCACTGGGAAGGGAGCG
GTGACTCTCCGGCCTCGTCTTCTACAGGAAACCCCAAGCAGTAGCCCTGCGAGCCCTCAGGAAACCC
GGCAACACGAAAGCAAACCAGGTCTGGAGCCAGAGCCTTCTTACAGATGAGTGGAGGCTTCTCCAG
TGCTGATGCCAATGGAATGCCAGCCCTTCTACTCGCTGCCAAGGGCTACAGAAAGTGCATCCCAAC
CTTCTCTGACAAGTCCAGGATGCCACTTCTCCAGTGCAGCCAGCCGGAGGTAATAGTTGTCCCTC
TCTACCTGGTTAACTACTGACAGAGGGCAAGAAGGCACTGCCAGACCTCCAACACCTCTGGGGCTCTTGG
CTGCGTCCCACAATCCCAGCGACTGCCTCTGCCGCTCACCTCTGACCTTCCCGACTCTAGATGATTTT
ATTCCCCCTCATCTGCAGAGGTGGCCCCACCACAGCCAGCCAGCCGCGCCTCTGGCTCCTTTGCCCCCA
TTAGCCAGACGCCACCATCCTTCTACCACCACCTCCGCTGGTCCCTCTGCCCGGAGGACCTCCGCG
AGTCTCGGAGCCTGACCTCACGGGAGCTGTTTCGAGTACCGATTCCAGTCCCTCTACTAAATGAAGTTTCT
TCTTCCCTTATTGGAAGTATTCCCAAGCCTTTCCATCAGTTAGCAAGCCTTCTATCCGCTATCCCTCCA
CAAGATTGTCAATCCTACTATTGTCTTGGCAACACAATCGAGAACAGCAAAAACGACTCAGTAGCCT
TTCAGATCCTGTCTCAGAAAGAAGAGTGGGAGAGCAGGACTCAGCACCAACCCAGGAAAAACCCACCTCA
CCTGGCAAGGCTATTGAAAAAGAGCAAAGGATGACAGTAGGCGGGTGGTGAAGAGCACTCAGGACTTAA
GCGATGTTTCCATGGATGAAGTGGGCACTCCCACTCCGGAACACTGAGAGATCAAAAGACTGGTACAAGAC
TATGTTTAAACAGATCCACAACTGAACAGAGACTCCTGAAGAAAACCTTATTTCCCTACGTACAAA
TTCCCTGAACTTCTGAAATCCAGCAAACCTCCGAAGAGACAAAGTCTTGCTCTGTCATGCACCCAGGC
TGGAGTGCAGTGGTACAGTCATAGCTCACTGCAGCCTCAAACCTAGACTCAAGCAATCCTCCACCTC
AGCCTCCAAGTAGCTGGGACTGCAGATGATGATTGATCTGACTCTCCAGATACTCATTTTCTGAA



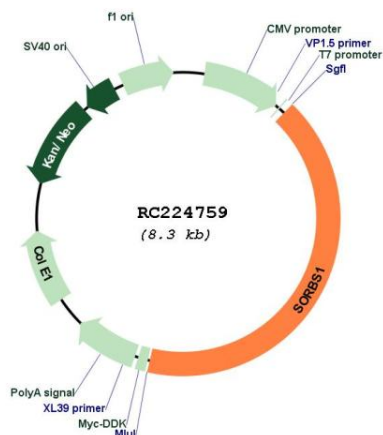
[View online >](#)

GACACAAAATCTCCCCTTCTGTGCCTCGCTCAAAAAGTGAGATGAGCTACATTGATGGTGAGAAGGTAG
TCAAGAGGTGGCCACACTACCCCTCCCAGCCCGCTCTTCTCACTGAAGTCAAGCTCAGAAAGAAATGA
CTGGGAACCCCGAGATAAGAAAGTAGACACAAGAAAATATCGTGACAGAGCCCAAGAGCATTTACGAATAT
CAGCCTGGCAAGTCTTCCGTTCTGACCAACGAAAAGATGAGTCCGGATATAAGCCCAAGAGATAGATT
TAAAGAATGAACCTTGGTATAAATCTTTTCGGAATTGGAGTTTGGGAAACCGCTCCCAAAAAGATG
GGATTACTCCTGGAGACTGCTCTATCCTTCTAGAGAGGATAGAAAGACTAATCTAGACAAAAGATCTC
AGCCTCTGCCAGACAGAGTTAGAGGCAGATTTAGAAAAAATGGAGACGCTTAATAAAGCACCCAGTGCAA
ACGTGCCACAGAGCTCAGCCATCAGCCCTACTCCGGAAATTTCTCAGAGACTCCTGGATATATATATTC
TTCCAACCTCCATGCAAGTGAAGAGGGAATCAGACGGGGCTCCTGGGGATCTCACTAGCTTGGAGAATGAG
AGACAAATTTATAAAAAGTGTCTTGAAGGTGGTGACATCCCTCTCAGGGCCTGAGTGGGCTCAAGCGAC
CATCCAGCTCTGCTTCCACTAAAGATTCAGAATCGCCAAGACATTTTATACCAGCTGATTACTTGGAAATC
CACGGAAGAAATTTATTCGAAGACGTCATGATGATAAAGAGAACTTTTAGCGGACCAGAGACGACTTAAA
CGCGAGCAAGAAGAGGCTGATATTGCAGCTCGACGCCACAGGCGTCATTCCGACGCCATCAGTTTA
TCACTAATGAGCGCTTTGGGACCTCCTCAATATAGACGATACTGCAAAAAGGAAATCTGGGTGAGAGAT
GAGACCTGCCAGAGCCAAATTTGACTTTAAAGCTCAGACACTAAAGGAGCTTCTCTGCAGAAGGGAGAT
ATTGTTTACATTTATAAGCAAATTTGATCAGAACTGGTATGAAGGAGAACCACGCGCCGGTGGGAATCT
TCCCACGCACCTACATCGAGCTTCTCCTCCTGCTGAGAAGGCACAGCCCAAAAAGTTGACACCAGTGCA
GGTTTTGGAATATGGAGAAGCTATTGCTAAGTTTAACTTTAATGGTGATACACAAGTAGAAATGTCTTC
AGAAAGGGTGAGAGGATCACACTGCTCCGGCAGGTAGATGAGAACTGGTACGAAGGGAGGATCCCGGGGA
CATCCCGACAAGGCATCTTCCCATCACCTACGTGGATGTGATCAAGCGACCACTGGTGAAAAACCTGT
GGATTACATGGACCTGCCTTCTCCTCCTCCCAAGTCGCAGTGCCACTGCAAGCCACAGCCATGGCGC
GAAGAGAGTGGACAATATGAGAGGAAAGCAGAGAGGGGGCAGGCGAAAGAGGCCCTGGTGGACCCAAGA
TCTCTAAGAAGAGCTGCTTGAAGCCTTCAGACGTGGTCAGGTGCCTGAGTACTGAACAGAGACTCTCAGA
TCTCAACACCCCTGAGGAGAGCCGGCCCGCAAGCCCTGGGTAGCGCTTTTCCAGGAAGTGAGGCTGAG
CAGACAGAGCGGCATAGAGGTGGCGAGCAGGCGGGGAGGAAAGCTGCTCGGAGAGGTGGGAGCCAGCAAC
CTCAAGCCAGCAGCGAAGAGTCAACCCGACAGGAGTCAAACCTCACAAGATTTATTTAGCTATCAAGC
ATTATATAGCTATATACCACAGAATGATGATGAGTTGGAACCTCCGCGATGGAGATATCGTTGATGTCATG
GAAAAATGTGACGATGGATGGTTTGTGGTACTTCAAGAAGGACAAGCAGTTTGGTACTTTTCCAGGCA
ACTATGTAACCTTTGTATCTA

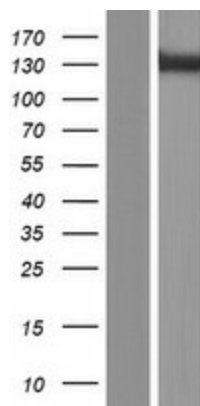
ACGCGTACGCGGCCGCTCGAGCAGAACTCATCTCAGAAGAGGATCTGGCAGCAAATGATATCCTGGATT
ACAAGGATGACGACGATAAGGTTTAA

OTI Disclaimer:	The molecular sequence of this clone aligns with the gene accession number as a point of reference only. However, individual transcript sequences of the same gene can differ through naturally occurring variations (e.g. polymorphisms), each with its own valid existence. This clone is substantially in agreement with the reference, but a complete review of all prevailing variants is recommended prior to use. More info
OTI Annotation:	This clone was engineered to express the complete ORF with an expression tag. Expression varies depending on the nature of the gene.
Components:	The ORF clone is ion-exchange column purified and shipped in a 2D barcoded Matrix tube containing 10ug of transfection-ready, dried plasmid DNA (reconstitute with 100 ul of water).
Reconstitution Method:	<ol style="list-style-type: none">1. Centrifuge at 5,000xg for 5min.2. Carefully open the tube and add 100ul of sterile water to dissolve the DNA.3. Close the tube and incubate for 10 minutes at room temperature.4. Briefly vortex the tube and then do a quick spin (less than 5000xg) to concentrate the liquid at the bottom.5. Store the suspended plasmid at -20°C. The DNA is stable for at least one year from date of shipping when stored at -20°C.
RefSeq:	NM_001034955.1 , NP_001030127.1
RefSeq Size:	6803 bp
RefSeq ORF:	3456 bp
Locus ID:	10580
UniProt ID:	Q9BX66
Cytogenetics:	10q24.1
Protein Families:	Druggable Genome
Protein Pathways:	Adherens junction, Insulin signaling pathway, PPAR signaling pathway
MW:	127.1 kDa
Gene Summary:	This gene encodes a CBL-associated protein which functions in the signaling and stimulation of insulin. Mutations in this gene may be associated with human disorders of insulin resistance. Alternative splicing results in multiple transcript variants. [provided by RefSeq, Mar 2014]

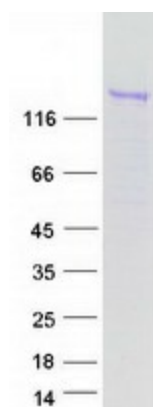
Product images:



Circular map for RC224759



Western blot validation of overexpression lysate (Cat# [LY422115]) using anti-DDK antibody (Cat# [TA50011-100]). Left: Cell lysates from untransfected HEK293T cells; Right: Cell lysates from HEK293T cells transfected with RC224759 using transfection reagent MegaTran 2.0 (Cat# [TT210002]).



Coomassie blue staining of purified SORBS1 protein (Cat# [TP324759]). The protein was produced from HEK293T cells transfected with SORBS1 cDNA clone (Cat# RC224759) using MegaTran 2.0 (Cat# [TT210002]).