

## Product datasheet for **RC224754**

### **RNF90 (TRIM7) (NM\_203293) Human Tagged ORF Clone**

#### **Product data:**

Product Type:	Expression Plasmids
Product Name:	RNF90 (TRIM7) (NM_203293) Human Tagged ORF Clone
Tag:	Myc-DDK
Symbol:	RNF90
Synonyms:	GNIP; RNF90
Mammalian Cell Selection:	Neomycin
Vector:	pCMV6-Entry (PS100001)
E. coli Selection:	Kanamycin (25 ug/mL)



[View online »](#)

**ORF Nucleotide Sequence:**

>RC224754 representing NM\_203293  
 Red=Cloning site Blue=ORF Green=Tags(s)

TTTTGTAATACGACTCACTATAGGGCGGCCGGGAATTCGTCGACTGGATCCGGTACCGAGGAGATCTGCC  
 GCC**CGCATCGCC**

ATGGCGGTGTGGGACCGCGACCGGCCCGGAACCGCGCCGAGGCTCTAGCGCTGGCGGCAGAGCTGC  
 AGGGCAGGGCAGCTGCTCCATCTGCCTAGAGCTCTTTGCTGAGCCGGTGTCCGTGAGTGGGCCACAG  
 CTTCTGCCCGCCTGCATAGGGCGCTGCTGGGAGCGCCCGGCGCGGGGTCTGTTGGGGCCACCCCGC  
 GCGCCCCCTTCCACTGCCCTGTCCGAGTCCCGGAGCCCGCGCGCCCAAGTCACTGCGGCCCAACC  
 GGCAGCTGGCGCAGTGGCCACGCTCCTGCGGCGCTTACGCTGCCCGCGGCTGCCCGGGAGAGCACGG  
 GTCTCAGGCGGCCGCGGCCCGGGCAGCGGCTGCCCGCTGCGGGCAGCATGGCGAACCTTCAAGCTAC  
 TGCCAGGACGACGGACGCGCCATCTGCGTGGTGTGCGACCGCCCGGAGCACCAGCGAGCACCGCGTGC  
 TGCCGCTGGACGAGGCGGTGCAGGAGGCCAAGGAGCTCTTGAGTCCAGGCTGAGGGTCTTGAAGAAGGA  
 ACTGGAGGACTGTGAGGTGTTCCGCTCCACGAAAAGAAGGAGAGCAAGGAGCTGCTGAAACAGATGGCA  
 CGGGAGCAGGAGAAGGTGGGGCAGAGTTCAGGCACTGAGGGCTTTCCTGGTGGAGCAGGAGGGTCCGGC  
 TGCTAGGCCCGCTGGAGGAAGTGTCCCGGGAGGTGGCACAGAAGCAGAATGAGAACCTGGCCAGCTCGG  
 GTTGAGATCACCCAGCTGTCCAAGCTCAGCAGCCAGATCCAGGAGACAGCTCAAAGCCTGACCTTGAC  
 TTTCTCCAGGAATTCAAAAGCAGCTGAGCAGGTGTAGCAATGTGCCTGGCCCCAAGCCAACACAGTCT  
 CTTCTGAGATGAAGAATAAAGTCTGGAATGTTTCTCTCAAGACCTTTGTCTTAAAGGGATGCTGAAGAA  
 GTTCAAAGAGGACCTTCGGGAGAGCTGGAGAAAGAGGAGAAAGTGGAGCTCACCTTGGATCCCGACAG  
 GCCAACCCGCGCCTCATCCTCTCTCTGGATCTTAAGGGCGTGCCTCGGCGAGCGGGCCAGGACCTGC  
 CCAACCCCTGCCGCTTCGACACCAACACCCGCGCTCTGGCGTCTCGGCTCTCCTCGGGCTTCTCCTCGGGCA  
 TCACTGGGAGGTGGAGGTGGGCTCTAAGGACCGCTGGGCCTTTGGCGTGGCCCGGAGAGCGTGCGCCGA  
 AAGGGCTGACGCCCTTCACTCCCGAGGAGGGCTCTGGGCCCTGCAGCTCAACGCGGCCAGTACTGGG  
 CCGTGACCAGCCCGAGCGGTGCGCCCTCAGCTGCGGGCACCTGTGCGCGTGGGGTGGCCCTGGACCT  
 GGAGGTGGGAGCCGTGCTCTACGCTGTGGAGGACATGCGCCACCTCTACACCTTCCGCGTCACTTC  
 CAGGAGCGGTGTTCCCGCTTTCTCTGTTGCTCCACGGGCACCTACTTGCATCTGGCT

**ACGCGT**ACGCGGCCGCTCGAGCAGAACTCATCTCAGAAGAGGATCTGGCAGCAATGATATCTGGATT  
 ACAAGGATGACGACGATAAGGTTTAA

**Protein Sequence:**

>RC224754 representing NM\_203293  
 Red=Cloning site Green=Tags(s)

MAAVGPRTGPGTGAELALAAELQGEATCSICLELFREPVSVECGHSFCRACIGRCWERPGAGSVGAATR  
 APPFPLPCPQCREPARPSQLRPNRQLAAVATLLRRFSLPAAAPGEHGSQAAAAARAAARCGQHGEFPKLY  
 CQDDGRAICVVCDRAREHREHAVLPLDEAVQEAKELLESRLRVLKELEDCEVFRSTEKESKELLKQMA  
 AEQEKVGAEFQALRAFLVEQEGRLLRLEEL SREVAQKQENLAQLGVEITQLSKLSSQIQETAQKPDLD  
 FLQEFKSTLSRCSNVPKPTTVSSEMKNKVVNLSLKTFLKGLKFKEDLRGELEKEEKVELTDPDT  
 ANPRLILSLDLKGVRLGERAQLPNHPCRFDTNTRVLASCGFSSGRHHWEVEVSGKDGWAFGVARESVR  
 KGLTPFTPEEGVWALQLNGGQYAVTSPERSPLSCGHL SRVRVALDLEVGAVSFYAVEDMRHLYTFRVNF  
 QERVFPLFSVCSTGTYLRIWP

**TRTRPLEQKLI**SEEDLAANDILDYKDDDDKV

**Chromatograms:**

[https://cdn.origene.com/chromatograms/ja1863\\_e08.zip](https://cdn.origene.com/chromatograms/ja1863_e08.zip)

**Restriction Sites:**

Sgfl-Mlul

**Cloning Scheme:**


**ACCN:** NM\_203293

**ORF Size:** 1533 bp

**OTI Disclaimer:** The molecular sequence of this clone aligns with the gene accession number as a point of reference only. However, individual transcript sequences of the same gene can differ through naturally occurring variations (e.g. polymorphisms), each with its own valid existence. This clone is substantially in agreement with the reference, but a complete review of all prevailing variants is recommended prior to use. [More info](#)

**OTI Annotation:** This clone was engineered to express the complete ORF with an expression tag. Expression varies depending on the nature of the gene.

**Components:** The ORF clone is ion-exchange column purified and shipped in a 2D barcoded Matrix tube containing 10ug of transfection-ready, dried plasmid DNA (reconstitute with 100 ul of water).

- Reconstitution Method:**
1. Centrifuge at 5,000xg for 5min.
  2. Carefully open the tube and add 100ul of sterile water to dissolve the DNA.
  3. Close the tube and incubate for 10 minutes at room temperature.
  4. Briefly vortex the tube and then do a quick spin (less than 5000xg) to concentrate the liquid at the bottom.
  5. Store the suspended plasmid at -20°C. The DNA is stable for at least one year from date of shipping when stored at -20°C.

**Note:** Plasmids are not sterile. For experiments where strict sterility is required, filtration with 0.22um filter is required.

**RefSeq:** [NM\\_203293.3](#)

**RefSeq Size:** 2862 bp

**RefSeq ORF:** 1536 bp

**Locus ID:** 81786

UniProt ID: [Q9C029](#)

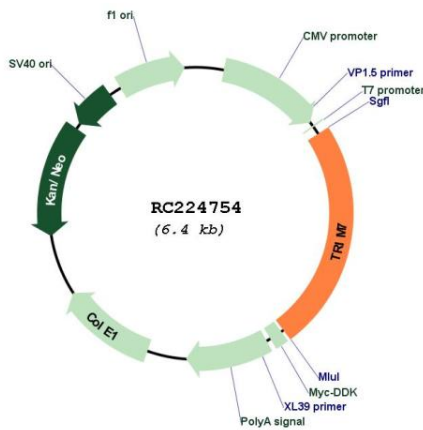
Cytogenetics: 5q35.3

Protein Families: Druggable Genome

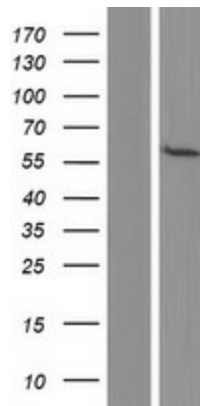
MW: 56.5 kDa

**Gene Summary:** The protein encoded by this gene is a member of the tripartite motif (TRIM) family. The TRIM motif includes three zinc-binding domains, a RING, a B-box type 1, a B-box type 2, and a coiled-coil region. The protein localizes to both the nucleus and the cytoplasm, and may represent a participant in the initiation of glycogen synthesis. Alternative splicing results in multiple transcript variants. [provided by RefSeq, Jul 2013]

**Product images:**



Circular map for RC224754



Western blot validation of overexpression lysate (Cat# [LY404377]) using anti-DDK antibody (Cat# [TA50011-100]). Left: Cell lysates from untransfected HEK293T cells; Right: Cell lysates from HEK293T cells transfected with RC224754 using transfection reagent MegaTran 2.0 (Cat# [TT210002]).