

## Product datasheet for **RC224752**

### **MPP5 (NM\_022474) Human Tagged ORF Clone**

#### **Product data:**

Product Type:	Expression Plasmids
Product Name:	MPP5 (NM_022474) Human Tagged ORF Clone
Tag:	Myc-DDK
Symbol:	MPP5
Synonyms:	PALS1
Mammalian Cell Selection:	Neomycin
Vector:	pCMV6-Entry (PS100001)
E. coli Selection:	Kanamycin (25 ug/mL)



[View online »](#)

**ORF Nucleotide  
Sequence:**

>RC224752 ORF sequence  
 Red=Cloning site Blue=ORF Green=Tags(s)

TTTTGTAATACGACTCACTATAGGGCGGCCGGGAATTCGTCGACTGGATCCGGTACCGAGGAGATCTGCC  
 GCC**CGCATCGCC**

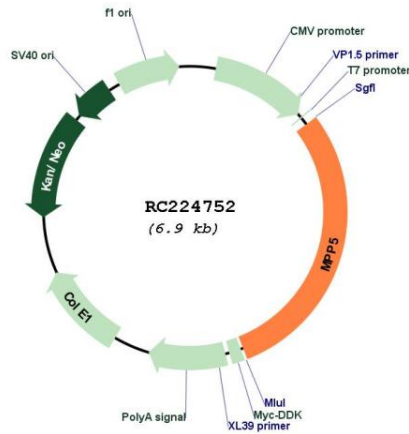
ATGACAACATCCCATATGAATGGGCATGTTACAGAGGAATCAGACAGCGAAGTAAAAATGTTGATCTTG  
 CATCACCAGAGGAACATCAGAAGCACCGAGAGATGGCTGTTGACTGCCCTGGAGATTTGGGCACCAGGAT  
 GATGCCAATACGTCAAGTGCACAGTTGGAGCGTATTCGCAACAACAGGAGGACATGAGGCGTAGGAGA  
 GAGGAAGAAGGAAAAAGCAAGAACTTGACCTTAATTCTTCCATGAGACTTAAGAACTAGCCAAATTC  
 CTCCAAGACCGGAATAGATAACCCTATGTTTGATACAGAGGAAGGAATTGTCTTAGAAAGTCTCATT  
 TGCTGTGAAAATATTAGAAATAGAAGACTTGTTTTCTTCACTTAAACATATCCAACATACTTTGGTAGAT  
 TCTCAGAGCCAGGAGGATATTTCACTGCTTTACAACCTGTTCAAATAAGGATTTCCAGAATGCATTTA  
 AGATACACAATGCCATCACAGTACACATGAACAAGGCCAGTCTCCATTTCTCTTATCTCCAACGCACA  
 AGATCTTGCTCAAGAGGTACAACTGTTTTGAAGCCAGTTCATCATAAGGAAGGACAAGAACTAAGTCT  
 TTGCTGAATACTCCACATATTCAGGCACCTTTACTGGCCACGATAAGGTTGCTGAGCAGGAAATGCAGC  
 TAGAGCCCATACAGATGAGAGAGTTTATGAAAGTATTGGCCAGTATGGAGGAGAAACTGTAAAAATAGT  
 TCGTATAGAAAAGGCTCGTGATATTCGGTGGGTGCTACAGTTCGTAATGAAATGGACTCTGTCATCATT  
 AGCCGGATAGTAAAAGGGGTGCTGCAGAGAAAAGTGGTCTGTTGCATGAAGGAGATGAAGTTCTAGAGA  
 TTAATGGCATTGAAATTCGGGGGAAAGATGTCAATGAGTTTTGACTTGTGTCTGATATGCATGGTAC  
 TTTGACTTTTGTCTGATTTCCAGTCAACAGATCAAGCCGCTCCTGCCAAGGAAACAGTAAATCCATGTA  
 AAAAGTCAATTTGACTATGACCCCTCAGATGACCCTTATGTTCCATGTCGAGAGTTAGGTCTGTCTTTTC  
 AAAAAGTGATATACTTTCATGTGATCAGTCAAGAAGATCCAACTGGTGGCAGGCCTACAGGGAAGGGGA  
 CGAAGATAATCAACCTTAGCCGGGCTTGTTCCAGGGAAAAGCTTTCAGCAGCAAAGGGAAGCCATGAAA  
 CAAACCATAGAAGAAGATAAGGAGCCAGAAAAATCAGGAAAACGTGGTGTGCAAAGAAGAATAAAAAGA  
 AGAGGAAAAAGGTTTTATATAATGCCAATAAAAAATGATGATTATGACAACGAGGAGATCTAACCTATGA  
 GGAAATGTCACCTTATCATCAGCCAGCAAATAGGAAGAGACCTATCATCTTGATTGGTCCACAGAAGTGT  
 GGCCAGAATGAATTGCGTCAGAGGCTCATGAACAAAGAAAAGGACCGCTTTCATCTGCAGTTCTCATA  
 CAACCCGGAGTAGGCGAGACCAAGAAGTAGCCGGTAGAGATTACCACTTTGTTTCGCGGCAAGCATTGGA  
 GGCAGACATAGCAGCTGAAAAGTTCATTGAGCATGGTGAATTTGAGAAGAATTTGTATGGAAGTACGATA  
 GATTCTGTACGGCAAGTATCAACTCTGGCAAAATATGTCTTTAAGTCTTCGTACACAGTCATTGAAGA  
 CTCTCCGGAATTCAGATTTGAAACCATATATTATCTTATTGCACCCCTTCACAAGAAAGACTTCGGGC  
 ATTATTGGCCAAAGAAGGCAAGAATCCAAAGCCTGAAGAGTTGAGAGAAATCATTGAGAAGACAAGAGAG  
 ATGGAGCAGAACAATGGCCACTACTTTGATACGGCAATTGTGAATTCGGATCTTGATAAAGCCTATCAGG  
 AATTGCTTAGGTTAATTAACAACTTGATACTGAACCTCAGTGGTACCATCCACTTGGCTGAGG

**ACGCGT**ACGCGGGCCGCTCGAGCAGAACTCATCTCAGAAGAGGATCTGGCAGCAAATGATATCCTGGATT  
 ACAAGGATGACGACGATAAGGTTTAA

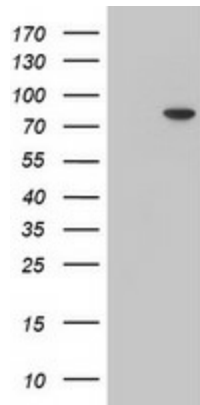


<b>Reconstitution Method:</b>	<ol style="list-style-type: none"><li>1. Centrifuge at 5,000xg for 5min.</li><li>2. Carefully open the tube and add 100ul of sterile water to dissolve the DNA.</li><li>3. Close the tube and incubate for 10 minutes at room temperature.</li><li>4. Briefly vortex the tube and then do a quick spin (less than 5000xg) to concentrate the liquid at the bottom.</li><li>5. Store the suspended plasmid at -20°C. The DNA is stable for at least one year from date of shipping when stored at -20°C.</li></ol>
<b>RefSeq:</b>	<a href="#">NM_022474.4</a>
<b>RefSeq Size:</b>	5608 bp
<b>RefSeq ORF:</b>	2028 bp
<b>Locus ID:</b>	64398
<b>UniProt ID:</b>	<a href="#">Q8N3R9</a>
<b>Cytogenetics:</b>	14q23.3
<b>Domains:</b>	SH3, PDZ, L27, Guanylate_kin, GuKc
<b>Protein Families:</b>	Druggable Genome
<b>Protein Pathways:</b>	Tight junction
<b>MW:</b>	77.3 kDa
<b>Gene Summary:</b>	<p>This gene encodes a member of the p55-like subfamily of the membrane-associated guanylate kinase (MAGUK) gene superfamily. The encoded protein participates in the polarization of differentiating cells, has been shown to regulate myelinating Schwann cells (PMID: 20237282), and is one of the components of the Crumbs complex in the retina. Mice which express lower levels of the orthologous protein have retinal degeneration and impaired vision (PMID: 22114289). Multiple transcript variants encoding different isoforms have been found for this gene. [provided by RefSeq, Feb 2012]</p>

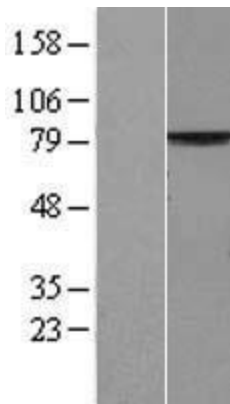
Product images:



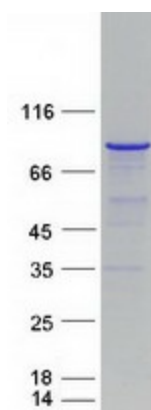
Circular map for RC224752



HEK293T cells were transfected with the pCMV6-ENTRY control (Cat# [PS100001], Left lane) or pCMV6-ENTRY MPP5 (Cat# RC224752, Right lane) cDNA for 48 hrs and lysed. Equivalent amounts of cell lysates (5 ug per lane) were separated by SDS-PAGE and immunoblotted with anti-MPP5 (Cat# [TA504451]). Positive lysates [LY411659] (100ug) and [LC411659] (20ug) can be purchased separately from OriGene.



Western blot validation of overexpression lysate (Cat# [LY411659]) using anti-DDK antibody (Cat# [TA50011-100]). Left: Cell lysates from untransfected HEK293T cells; Right: Cell lysates from HEK293T cells transfected with RC224752 using transfection reagent MegaTran 2.0 (Cat# [TT210002]).



Coomassie blue staining of purified MPP5 protein (Cat# [TP324752]). The protein was produced from HEK293T cells transfected with MPP5 cDNA clone (Cat# RC224752) using MegaTran 2.0 (Cat# [TT210002]).