

Product datasheet for RC224749

FBLIM1 (NM_001024215) Human Tagged ORF Clone

Product data:

Product Type: Expression Plasmids
Product Name: FBLIM1 (NM_001024215) Human Tagged ORF Clone
Tag: Myc-DDK
Symbol: FBLIM1
Synonyms: CAL; FBLP-1; FBLP1
Mammalian Cell Selection: Neomycin
Vector: pCMV6-Entry (PS100001)
E. coli Selection: Kanamycin (25 ug/mL)
ORF Nucleotide Sequence: >RC224749 representing NM_001024215
 Red=Cloning site Blue=ORF Green=Tags(s)

TTTTGTAATACGACTCACTATAGGGCGGCCGGAATTCGTCGACTGGATCCGGTACCGAGGAGATCTGCC
 GCC**CGATCGCC**

ATGGCCTCAAAGCCTGAGAAGAGGGTGGCATCGTCTGTCTTTATCACCTGGCACCCCGCGCCGCGATG
 TGGCCGTGGCGGAGGAAGTGAGGCAGGCAGTTTGTGAGGCCCGCGTGGCCGCCCTGGGAGGCTCTGC
 CCCCATGAAGACACCCGAGGCTGGCTTGGCGGGAGGCCAGCCCTGGACAACCCCTGGCAGAGCTGCA
 GCCACAGTGCCGGCTGCACCTATGCAGCTTCAATGGAGGATGCCACCCCTCCTCCTGTCTGGATG
 GTGAGGACGTGCTTCTGACCTGGACCTCCTCCACCCCTCCACCGCCCTCCAGTGCTTCTGCCTTC
 TGAAGAGGAGGCTCCTGCTCCAATGGGGCCTCACTATTGCAGACTTAGAGCAGCTGCACCTGTCCCCG
 CCCCCGCCCCACCACAGGCCCCAGCGGAGGGACCTTCAGTCCAGCCCGTCCCCCTCAGGCCCATGGAGG
 AAGAGCTGCCACCTCCCCGGCAGAACCTGTTGAGAAAGGGGCATCCACAGACATCTGTGCCTTCTGCCA
 CAAGACCGTGTCCCCCGAGAGCTGGCTGTGGAGGCCATGAAGAGGCAGTACCATGCCAGTGCTTACAG
 TGCCGCACCTGCCGCCGACGCTGGCTGGGCGAGGCTTACCAGAAGGATGGGCGACCCCTCTGCGAAC
 CCTGCTACCAGGACACTGGAGAGGTGCGGCAAGTGTGGCGAGGTGGTCCGGGACCACATCATCAGGGC
 CCTGGGCCAGGCCTTCCACCCCTCCTGCTTACGTGTGTGACCTGCGCCCGGTGCATTGGGGATGAGAGC
 TTTGCCCTGGGCGAGCAGAACGAGGTGTACTGCCTGGACGACTTACAGGTACGAGAAGGGTTTGTGCA
 CTGGGTGGGTGCAGGGACAGGGCGAGACCCAAGCAGGGTGAAGGAGCTGAGCTTGAGTCTGGGTGCTG
 GGCCAGAGTTTCTGTCTACTGTTTATTATAAAGAATATTACAGGGCTGGGCTGGGCGCGGTGGCTCAC
 GCCTGTAATCCAGCACTTTGGGAGGCCGAGCGGGTGGATCACGAGGTCAGGAGATCGAGATCATCCTG
 GC

ACGCGTACGCGGCCGCTCGAGCAGAACTCATCTCAGAAGAGGATCTGGCAGCAATGATATCCTGGATT
 ACAAGGATGACGACGATAAGGTTTAA



[View online >](#)

Protein Sequence: >RC224749 representing NM_001024215
Red=Cloning site Green=Tags(s)

MASKPEKRVASSVFITLAPPRRDVAVAEVQRQAVCEARRGRPWEAPAPMKTPEAGLAGRPSWTTTPGRAA
 ATVPAAPMQLFNGGCPPPPVLDGEDVLPDLDLLPPPPPPVLLPSEEEAPAPMGASLIADLEQLHLSP
 PPPPPQAPAEGPSVQPGPLRPMEEELPPPPAEPVEKGASTDICAFCCHKTVSPRELAVEAMKROYHAQCFT
 CRTCRRQLAGQSFYQKDGRLCEPCYQDTLERCGKCGEVVRDHIIRALGQAFHPSCFTCVTCARCIGDES
 FALGSQNEVYCLDDFYRYEKGLCTGWGAGTGRDPSRVKELSLSPGCWARVSCLLVYYKEYRAGLGAVAH
 ACNPSTLGRRGGWITRSGDRDHPG

TRTRPLEQKLISEEDLAANDILDYKDDDDKV

Chromatograms: https://cdn.origene.com/chromatograms/mk8055_e09.zip

Restriction Sites: SgfI-MluI

Cloning Scheme:



* The last codon before the Stop codon of the ORF

ACCN: NM_001024215

ORF Size: 1122 bp

OTI Disclaimer: The molecular sequence of this clone aligns with the gene accession number as a point of reference only. However, individual transcript sequences of the same gene can differ through naturally occurring variations (e.g. polymorphisms), each with its own valid existence. This clone is substantially in agreement with the reference, but a complete review of all prevailing variants is recommended prior to use. [More info](#)

OTI Annotation: This clone was engineered to express the complete ORF with an expression tag. Expression varies depending on the nature of the gene.

Components: The ORF clone is ion-exchange column purified and shipped in a 2D barcoded Matrix tube containing 10ug of transfection-ready, dried plasmid DNA (reconstitute with 100 ul of water).

Reconstitution Method:

1. Centrifuge at 5,000xg for 5min.
2. Carefully open the tube and add 100ul of sterile water to dissolve the DNA.
3. Close the tube and incubate for 10 minutes at room temperature.
4. Briefly vortex the tube and then do a quick spin (less than 5000xg) to concentrate the liquid at the bottom.
5. Store the suspended plasmid at -20°C. The DNA is stable for at least one year from date of shipping when stored at -20°C.

RefSeq: [NM_001024215.1](#), [NP_001019386.1](#)

RefSeq Size: 1521 bp

RefSeq ORF: 1125 bp

Locus ID: 54751

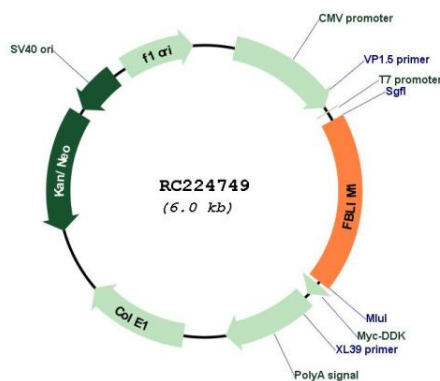
UniProt ID: [Q8WUP2](#)

Cytogenetics: 1p36.21

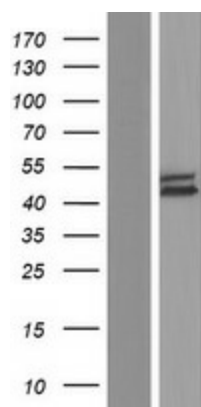
MW: 40.1 kDa

Gene Summary: This gene encodes a protein with an N-terminal filamin-binding domain, a central proline-rich domain, and, multiple C-terminal LIM domains. This protein localizes at cell junctions and may link cell adhesion structures to the actin cytoskeleton. This protein may be involved in the assembly and stabilization of actin-filaments and likely plays a role in modulating cell adhesion, cell morphology and cell motility. This protein also localizes to the nucleus and may affect cardiomyocyte differentiation after binding with the CSX/NKX2-5 transcription factor. Alternative splicing results in multiple transcript variants encoding different isoforms. [provided by RefSeq, Jul 2008]

Product images:



Circular map for RC224749



Western blot validation of overexpression lysate (Cat# [LY422622]) using anti-DDK antibody (Cat# [TA50011-100]). Left: Cell lysates from untransfected HEK293T cells; Right: Cell lysates from HEK293T cells transfected with RC224749 using transfection reagent MegaTran 2.0 (Cat# [TT210002]).