

## Product datasheet for **RC224740**

### **GAB3 (NM\_080612) Human Tagged ORF Clone**

#### **Product data:**

Product Type:	Expression Plasmids
Product Name:	GAB3 (NM_080612) Human Tagged ORF Clone
Tag:	Myc-DDK
Symbol:	GAB3
Mammalian Cell Selection:	Neomycin
Vector:	pCMV6-Entry (PS100001)
E. coli Selection:	Kanamycin (25 ug/mL)



[View online »](#)

**ORF Nucleotide Sequence:**

>RC224740 representing NM\_080612  
 Red=Cloning site Blue=ORF Green=Tags(s)

TTTTGTAATACGACTCACTATAGGGCGGCCGGGAATTCGTCGACTGGATCCGGTACCGAGGAGATCTGCC  
 GCC**CGCATCGCC**

ATGAGTGGCGGCGACGCAGTGTGCACCGCTGGCTCGTTAAGTCGCCCCCGAGAGGAAGCTACAGCGCT  
 ACGCCTGGCGCAAGCGCTGGTTTGTCTCCGGCGAGGCCGATGAGCGGCAACCCCGATGTCTTGAGTA  
 CTACAGGAACAAGCACTCCAGCAAGCCATCCGGGTGATAGACCTCAGCGAGTGTGCAGTGTGGAAGCAT  
 GTGGGCCCCAGCTTTGTTTCGGAAGGAATTTAGAATAATTTCTGTGTTTATTGTCAAGACTACTTCCCGTA  
 CATTCTACCTGGTGGCCAAAAGTGAAGAAATGCAGGTGTGGGTGCACAGCATCAGTCAGGTCTGCAA  
 CCTTGGCCACCTGGAGGATGGTGCAGATTCATGGAGAGCCTCTTACACGCCCTCCTCCCTGCAGCCA  
 TCCTCTGCCAGCTCCCTTCTACCGCCCATGCTGCCAGCTCCTCTTGGCAAGAGATGACCCAAACTA  
 ATGCCGTAGCCACTGAGGAAACCAGAAGTGAAGTGCAGAGCTTCTCTTCCAGATTATCTGGTTTTGTC  
 CAACTGCGAGACTGGAAGACTGCACCATACCAGTCTACCACCAGATGTGATAGCTGGTCAAAGTGCAGC  
 CGTTCATTGGAACAGGCTTCATTTGATGATGTTTTTTGTTGACTGCCTGCAGCCGCTCCCTCCAGTCATT  
 TGGTCCACCCCTCATGCCATGGCAGTGGAGCTCAGGAGGTGCCATCCTCGAGGCCTCAGGCTGCCCTGAT  
 CTGGAGTAGAGAAATCAATGGGCCACCCAGGGACCACTTGTCTTCTTACCATTGCTGGAAGTTCCCTTA  
 AGTTCCACCATTAGGTAGATAAAAAACAAGTTCCCTTACCCTGTGGAGCAAAAGAACTAGACATTATGT  
 CCAACTCCACCTCCCCGCCCCCTAAGCCAAGCCATCTGTCTGAACGGCGCCAAGAGGAGTGGAGTAC  
 ACACAGTGGTAGCAAGAAGCCAGAATGCACTCTGGTTCCAAGAAGAATCTCCCTCTCTGGTTTAGACAAC  
 ATGAGAACCTGGAAGCTGATGTAGAAGCCAACTCTTAAGACACCGAGACAAGCGGCTTAGTTTGAATT  
 TGCCATGCAGTTCTCCCGATGTACCCACAGCTTCAGCCAGTATCGAAGACAGTATGTGCCCATGAG  
 CCCCAGGCTGGTGCCTCTGGTCTTGGACCCACTGCAGCCCTGATGACTACATTCGAATGAATCAGGA  
 AGCATCTCAAGCCGTTGCCTGAGCTGCCTGCAAACCTGGAACCTCCCCAGTGAATAGAGATCTCAAGC  
 CTCAGAGGAAATCACGGCCACCTCCTCTGGACCTGAGAAACCTCTCGATCATCCGGAACATGCATCTCT  
 TACCAGGACCCGCACTGTGCCTTGCACTGCAACCAGCTTCTCTCTCCAGAAAGAATGGTATTAATTCT  
 GCAAGATTTTTTGTAACTCTGTTTCCAGAGAAGCAAGAAAGCTACATCGAAATGGAGGAGCACCGAA  
 CAGCCAGTTCCCTGAGCAGTGGTGCCTTACGTGGACAAAGAAATTCAGCCTAGATTATTTGGCCCTGGA  
 CTTCAATTGAGCATCACCAGCCCCATGCAGCAGAACTTCTCCTTTCAGAAACAAGAGTAGACTAT  
 GTCCAAGTGGATGAGCAGAAGACACAGGCTCTCCAGAGCAGAAACAGGAGTGGACGGATGAAAGGCAAT  
 CCAAAGTA

**ACGCGT**ACGCGGCCGCTCGAGCAGAAACTCATCTCAGAAGAGGATCTGGCAGCAAATGATATCCTGGATT  
 ACAAGGATGACGACGATAAGGTTTAA

**Protein Sequence:**

>RC224740 representing NM\_080612  
 Red=Cloning site Green=Tags(s)

MSAGDAVCTGWLKSPPERKLQRYAWRKRWFVLRGRMSGNPDVLEYRNRKHSSKPIRVIDLSECAVWKH  
 VGPSFVRKEFQNNFVIVKTTSTRFYLVAKTEQEMQVWVHSISQVCNLGHLEADGADSMESLSTYPPSSLQP  
 SSASSLLTAHAASSSLPRDDPNTNAVATEETRSESELLFLPDYLVLSNCTGRLHHTSLPTRCDSWSNSD  
 RSLEQASFDDVFVDLQPLPSSHLVHPSCHGSGAQEVPSRPQAALIWSREINGPPRDHLSSSPLESSL  
 SSTIQVDKNQGSPLCGAKELDIMSNTPPRPPKPSHLERRQEEWSTHSGSKKPECTLVPRRISLSGLDN  
 MRTWKADVEGQSLRHRDKRLSLNLPGRFSPMYPTASASIEDSYVPMSPQAGASGLGPHCSPDDYIPMNSG  
 SISSPLPEL PANLEPPP VNRDLKPKRKRPPPLDLRNL SI IREHASL TRTRTVPCSRSTFLSPERNGINS  
 ARFFANPVSREDEESYIEMEHRASSLSSGALTWTKFSLDYLDLDFNSASPAPMQKLLLSEEQRVDY  
 VQVDEQKTQALQSTKQEWTDERQSKV

**TRTRPLEQKLISEEDLAANDILDYKDDDDKV**

**Chromatograms:**

[https://cdn.origene.com/chromatograms/ja1402\\_a04.zip](https://cdn.origene.com/chromatograms/ja1402_a04.zip)

Restriction Sites: SgfI-MluI

Cloning Scheme:



ACCN: NM\_080612

ORF Size: 1758 bp

OTI Disclaimer: The molecular sequence of this clone aligns with the gene accession number as a point of reference only. However, individual transcript sequences of the same gene can differ through naturally occurring variations (e.g. polymorphisms), each with its own valid existence. This clone is substantially in agreement with the reference, but a complete review of all prevailing variants is recommended prior to use. [More info](#)

OTI Annotation: This clone was engineered to express the complete ORF with an expression tag. Expression varies depending on the nature of the gene.

Components: The ORF clone is ion-exchange column purified and shipped in a 2D barcoded Matrix tube containing 10ug of transfection-ready, dried plasmid DNA (reconstitute with 100 ul of water).

- Reconstitution Method:
1. Centrifuge at 5,000xg for 5min.
  2. Carefully open the tube and add 100ul of sterile water to dissolve the DNA.
  3. Close the tube and incubate for 10 minutes at room temperature.
  4. Briefly vortex the tube and then do a quick spin (less than 5000xg) to concentrate the liquid at the bottom.
  5. Store the suspended plasmid at -20°C. The DNA is stable for at least one year from date of shipping when stored at -20°C.

RefSeq: [NM\\_080612.4](#)

RefSeq Size: 4731 bp

RefSeq ORF: 1761 bp

Locus ID: 139716

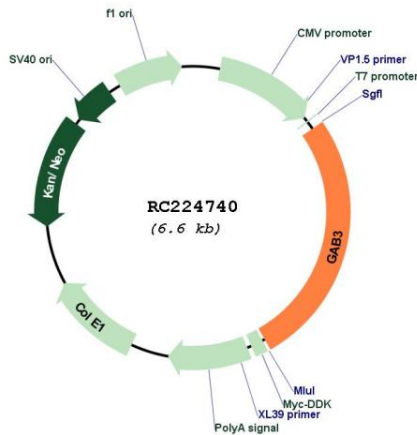
UniProt ID: [Q8WWW8](#)

Cytogenetics: Xq28

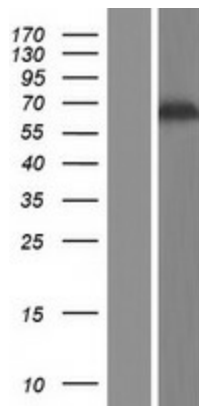
MW: 65.4 kDa

**Gene Summary:** This gene is a member of the GRB2-associated binding protein gene family. These proteins are scaffolding/docking proteins that are involved in several growth factor and cytokine signaling pathways, and they contain a pleckstrin homology domain, and bind SHP2 tyrosine phosphatase and GRB2 adapter protein. The protein encoded by this gene facilitates macrophage differentiation. Alternative splicing results in multiple transcript variants. [provided by RefSeq, Aug 2013]

**Product images:**



Circular map for RC224740



Western blot validation of overexpression lysate (Cat# [LY409155]) using anti-DDK antibody (Cat# [TA50011-100]). Left: Cell lysates from untransfected HEK293T cells; Right: Cell lysates from HEK293T cells transfected with RC224740 using transfection reagent MegaTran 2.0 (Cat# [TT210002]).