

## Product datasheet for **RC224732**

### **DNLZ (NM\_001080849) Human Tagged ORF Clone**

#### Product data:

**Product Type:** Expression Plasmids  
**Product Name:** DNLZ (NM\_001080849) Human Tagged ORF Clone  
**Tag:** Myc-DDK  
**Symbol:** DNLZ  
**Synonyms:** bA413M3.2; C9orf151; HEP; HEP1; TIMM15; ZIM17  
**Mammalian Cell Selection:** Neomycin  
**Vector:** pCMV6-Entry (PS100001)  
**E. coli Selection:** Kanamycin (25 ug/mL)  
**ORF Nucleotide Sequence:** >RC224732 representing NM\_001080849  
**Red**=Cloning site **Blue**=ORF **Green**=Tags(s)

TTTTGTAATACGACTCACTATAGGGCGGCCGGAATTCGTCGACTGGATCCGGTACCGAGGAGATCTGCC  
GCC**CGATCGCC**

ATGCTGCGGACTGCGCTGCGCGGCGCGCCGAGGTTGCTGAGTCGCGTGCAGCCCCGGGCGCCCTGCCTGA  
GGCGGCTGTGGGGCCGCGGGGCCGTCCAGAGGTCGCGGGGAGGCGGGGCTGGGCTGGGGCTGGCG  
GCGCTCAAGCTCCGAGCAGGGGCCGGGGCCCGCGCGGCTCTGGGCGCGTGGAGCGGCGCACTACCAG  
CTCGTCTACACCTGCAAGGCTGCGGGACTAGGTCCTCAAGCGCATCTCAAGCTGGCCTATCACCAAG  
GCGTGGTCATTGTGACCTGCCCGGCTGCCAGAACCACCATATCATCGTGACAACCTGGGCTGGTTCTC  
GGACCTGAATGGGAAGAGAAATATCGAAGAGATCCTGACGGCCAGAGGCGAGCAGGTGCACCGTGTGGCG  
GGCGAGGGGGCCCTGGAAGTGGTTCTGGAGGCTGAGGGGCCCCACATCCACTGCACTCCGGAAGCGG  
GTGAGGATGAGGGTCCCCCAGCCCTGGCAAGACGGAGCCGAGC

**ACGCGT**ACGCGGCCGCTCGAGCAGAACTCATCTCAGAAGAGGATCTGGCAGCAAATGATATCCTGGATT  
ACAAGGATGACGACGATAAGGTTTAA

**Protein Sequence:** >RC224732 representing NM\_001080849  
**Red**=Cloning site **Green**=Tags(s)  
MLRTALRGAPRLLSRVQPRAPCLRRLWGRGARPEVAGRRRAWAWGWRSSSEQGPAAALGRVEAAHYQ  
L VYTCKVCGTRSSKRISKLAYHQVVIVTCPGCQNHIIADNLGWFSDLNGKRNIEEILTARGEQVHRVA  
GEGALELVLEAAGAPTSTAAPEAGEDEGPPSPGKTEPS

**TRTRPLEQKLI**SEEDLAANDILDYKDDDDKV

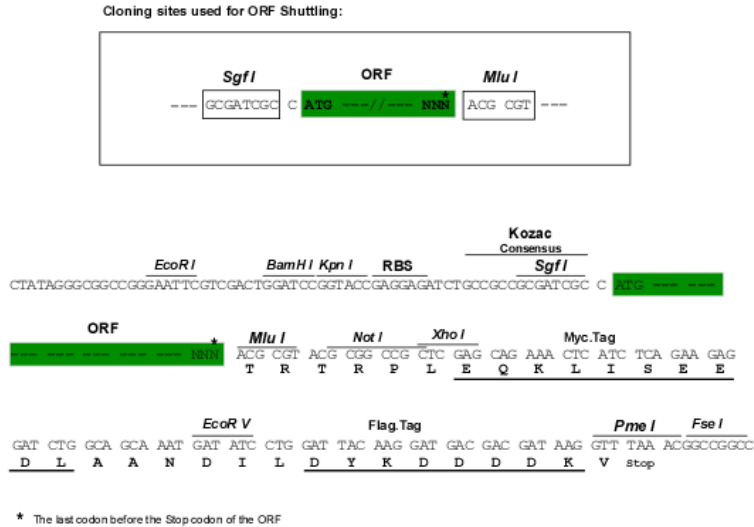
**Chromatograms:** [https://cdn.origene.com/chromatograms/ja1253\\_e03.zip](https://cdn.origene.com/chromatograms/ja1253_e03.zip)



[View online »](#)

Restriction Sites: SgfI-MluI

Cloning Scheme:



ACCN: NM\_001080849

ORF Size: 534 bp

OTI Disclaimer: The molecular sequence of this clone aligns with the gene accession number as a point of reference only. However, individual transcript sequences of the same gene can differ through naturally occurring variations (e.g. polymorphisms), each with its own valid existence. This clone is substantially in agreement with the reference, but a complete review of all prevailing variants is recommended prior to use. [More info](#)

OTI Annotation: This clone was engineered to express the complete ORF with an expression tag. Expression varies depending on the nature of the gene.

Components: The ORF clone is ion-exchange column purified and shipped in a 2D barcoded Matrix tube containing 10ug of transfection-ready, dried plasmid DNA (reconstitute with 100 ul of water).

Reconstitution Method:

1. Centrifuge at 5,000xg for 5min.
2. Carefully open the tube and add 100ul of sterile water to dissolve the DNA.
3. Close the tube and incubate for 10 minutes at room temperature.
4. Briefly vortex the tube and then do a quick spin (less than 5000xg) to concentrate the liquid at the bottom.
5. Store the suspended plasmid at -20°C. The DNA is stable for at least one year from date of shipping when stored at -20°C.

RefSeq: [NM\\_001080849.3](#)

RefSeq Size: 724 bp

RefSeq ORF: 537 bp

Locus ID: 728489

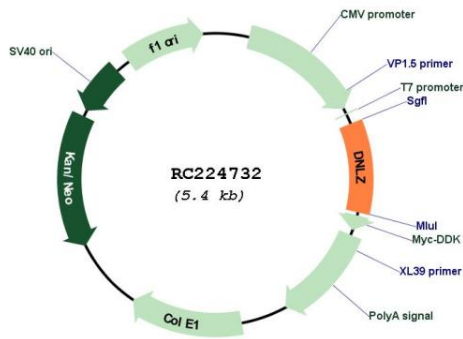
UniProt ID: [Q5SXM8](#)

**Cytogenetics:** 9q34.3

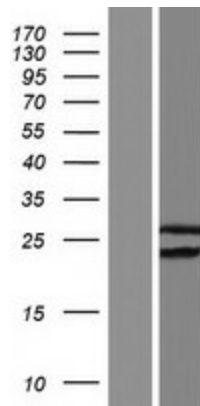
**MW:** 19 kDa

**Gene Summary:** May function as a co-chaperone towards HSPA9/mortalin which, by itself, is prone to self-aggregation.[UniProtKB/Swiss-Prot Function]

**Product images:**



Circular map for RC224732



Western blot validation of overexpression lysate (Cat# [LY421129]) using anti-DDK antibody (Cat# [TA50011-100]). Left: Cell lysates from untransfected HEK293T cells; Right: Cell lysates from HEK293T cells transfected with RC224732 using transfection reagent MegaTran 2.0 (Cat# [TT210002]).