

Product datasheet for **RC224731**

OSBPL3 (NM_145320) Human Tagged ORF Clone

Product data:

Product Type:	Expression Plasmids
Product Name:	OSBPL3 (NM_145320) Human Tagged ORF Clone
Tag:	Myc-DDK
Symbol:	OSBPL3
Synonyms:	ORP-3; ORP3; OSBP3
Mammalian Cell Selection:	Neomycin
Vector:	pCMV6-Entry (PS100001)
E. coli Selection:	Kanamycin (25 ug/mL)



[View online »](#)

ORF Nucleotide Sequence:

>RC224731 representing NM_145320
 Red=Cloning site Blue=ORF Green=Tags(s)

TTTTGTAATACGACTCACTATAGGGCGGCCGGAATTCGTCGACTGGATCCGGTACCGAGGAGATCTGCC
 GCC**CGGATCGCC**

ATGAGTGTGAGAAGAACCTTGGTGTGTCCAAAAATTGGTATCACCTTCAAGGAGCACAAGTAGCTGCT
 CTTCGAAGCAAGGAAGTCGACAGGACAGCTGGGAAGTGGTGAAGGACTGAGGGGGAGATGAATTACAC
 CCAGGAGCCACCAAGTTCAGAAAGGATTTTTGCTGAAAAAGAGGAAGTGGCCCTTAAAAAGGCTGGCATAAG
 AGATTCTTCTATCTGGACAAAGGAATCTTGAAATATGCCAAGAGCCAAACCGATATAGAGAGAGAGAAGC
 TGCATGGCTGCATTGATGTGGGCTCTCAGTGTGTCTGTAAAGAAGTCATCAAATGCATAGACCTTGA
 CACCGAGGAGCACATCTACCATCTGAAGGTCAAGTCAGAAGAAGTCTTTGATGAGTGGGTATCGAAACTT
 CGCCACCACAGAATGTATCGTCAGAATGAAATGGCATGTTTCCACATGAAGTTAACCACTTTTTCTCAG
 GGTCCACCATCACAGACTCTTCATCTGGGGTGTGGACTCCATTTCAAGTAGGAAGCGTAGCAGTATATC
 AAAGCAGAATTTATTTCAAAGTGAAGCAATGTATCATTTTCTGTGGTGGTGAACACGAGTTCATTA
 TGTTTACAGTCTTCAGAGGACATGGAAAAATGCTCCAAAGACCTGGCGCACTGTGCATGCCTACCTGGTAG
 AAATGAGCCAGCTCCTGCAAAGCATGGACGTCCTGCATCGGACATACTCAGCACCAGCTATCAACGCCAT
 CCAGGTCCCGAAACCTTTTTCTGGCCAGTAAGACTACACTCCTCCAATCCTAATTTGTCAACACTAGAT
 TTTGGAGAAGGAAAAATATTCTGATGGCTCTGAAACCTCATCAGAGTTTTCTAAAAATGCAAGAAGATC
 TGTGTCATATTGCCATAAAAGTTACTTCACTTAAAGTCAAGTCACTTTAATATCATGTGACGCGAGAGAGA
 GAAACTGAAGCAGCTGATGGAGCAGGATGCCTCCTCCTCCCGTCTGCTCAGGTCATTGGTCTGAAGAAC
 GCCCTGTATCCGCCCTAGCACAAAACAGATCTTAAAGAACGTTACGCAGAATCCATGCCGAGTCTC
 TGCTCTCGACTCCCGCTGTGCGCAAGTCGGGTGACAATCTGGCAGAGGAAAACTCCAGAGATGAAAA
 CCGAGCTCTAGTTCATCAGCTTTCTAATGAAAGTAGACTCTCCATCACTGACTCCCTTTCTGAGTTTTTT
 GATGCTCAGGAAGTTCTGTTATCTCCAAGCTCTCAGAAAACGAGATTTCTGATGATGACTCATATGTCA
 GTGACATAAGTGATAATCTTTCCTTAGATAATCTCAGTAATGATTTAGATAATGAGAGACAGACCTTGGG
 GCCTGTCTTGATAGTGGTGGGAAGCGAAGTCCCGGAGAAGAACGTGCCTGCCGCGCCCTGCCGAGC
 AGCAGTAACATCAGCCTGTGGAACATCTGAGGAACAACATCGGAAGGACCTGTCCAAGGTGGCCATGC
 CGGTGGAGCTGAACGAGCCCTGAACACGCTGCAGAGGCTCTGCGAGGAGCTGGAGTACAGCGAGCTCCT
 GGACAAGGCCGCGCAGATTCCCAGCCCTGAAAGGATGGTATATGTGGCAGCCTTTGCCATATCAGCG
 TATGCATCTAGCTACTACCGAGCTGGAAGCAAGCCATTTAATCCGTTCTTGGAGAAACATATGAATGTA
 TTCGGGAGGACAAGGGCTTCCAGTTTTTTTCAGAACAGGTGAGCCACCATCCGCCTATCTCTGCGTGTCA
 TGCTGAGTCTAGAAATTTGTTTTCTGGCAAGATGTGAGATGGAAAAACAAATCTGGGGCAATCCATG
 GAAATTGTTCCAATTGGCACAACCCATGTGACTCTGCCAGTTTTTGGGGATCATTTTGGTGAACAAAAG
 TGACCTCTTGATCCATAACATCTTAAGCGGGCAGAGGTGGATTGAGCACTATGGAGAGATTGTCATCAA
 GAACCTGCATGATGATTCCTGCTACTGCAAAGTGAATTTATAAAGGCAAAATACTGGAGCACTAATGCC
 CATGAGATTGAAGGCACAGTGTGACAGGAGTGGAAAAGCGTTTCATCGGCTGTTTGGGAAATGGCATG
 AAAGCATCTACTGTGGCGGGCTCCTCTTCTGCCTGTGTATGGAGAGCAAAATCCTATGCCGAAAGGCTA
 CGAGCAATACTATAGCTTACACAGTTTGGCTGGAATTAATGAAATGGATCCATCATCAAAGTCTTTA
 TTGCCACCTACTGACACTCGATTTAGGCCAGACCAGAGGTTTCTAGAGGAAGGGAACCTAGAAGAAGCTG
 AAATACAAAAGCAGAGGATTGAACAACGAGAGAGAAAGGCGGGCTTAGAAGAAAATCATGTGGA
 GCACCAGCTCGTTTTTTCAGGAAATCCGACGATGACTCTGGGTGAGCAACGGCACCTATTTGGAACCT
 AGAAAAGATCTTGGTTTTTCCAAGTGGACCATCTGTCTTATGG

ACGCGTACGCGGGCGCTCGAGCAGAAACTCATCTCAGAAGAGGATCTGGCAGCAATGATATCCTGGATT
 ACAAGGATGACGACGATAAGGTTTAA

Protein Sequence: >RC224731 representing NM_145320
 Red=Cloning site Green=Tags(s)

```
MSDEKNLGVSQKLVSPSRSTSSCSSKQGSRQDSWEVVEGLRGEMNYTQEPVQKGFLLKKRKWPLKGWHK
RFFYLDKGIKLYAKSQTDIEREKLHGCIDVGLSVMSVKKSSKCIDLDTEEHIYHLKVKSEEVFDEWVSKL
RHHMYRQNEIAMFPHEVNHFFSGSTITDSSSGVFDSISSRKRSSISKQNLFQTGSNVFSFCGGETRVPL
WLQSSSEDMKCKDLAHCHAYLVEMSQLLQSMVDLHRTYSAPAINAIQVPKPFSGPVRHLHSSNPNLSTLD
FGEEKNYSQDSETSSEFSKMQEDLCHIAHKVYFTLRSAFNIMSAEREKQKQLEQDASSPSAQVIGLKN
ALLSSALAQNTDLKERLRRIHAESLLLDSPAVAKSGDNLAEENSRDENRALVHQLSNESSLITDSLSEFF
DAQEVLLSPSSSENEISDDDSYVSDISDNLSLNDLNDLNDNERQTLGPVLDSGREAKSRRRTCLPAPCPS
SSNISLWNILRNNIGKDLKVPVAMPVELNEPLNTLQRLCEELEYSELLDKAAQIPSPLERMYYVAFAISA
YASSYYRAGSKPFNPVLGETYECIREDKGFQFFSEQVSHHPPISACHAESRNFVWQDVRWKNKFWGKSM
EIVPIGTHVTLPVFGDFEWNKVTSCIHNILSGQRWIEHYGEIVIKNLHDDSCYCKVNF IKAKYWTNA
HEIEGTVFDRSGKAVHRLFGKWHEIYCGGGSSACVWRANPMPKGYEQYYSFTQFALELNEMDPSSKSL
LPPTDTRFRPDQRFLLEGNLEAEIQQRIEQLQRERRRVEENHVEHQPRFRKSDDDSWVSNGTYLEL
RKDLGFSKLDHPVLW
```

TRTRPLEQKLISEEDLAANDILDYKDDDDKV

Chromatograms: https://cdn.origene.com/chromatograms/mg2885_e05.zip

Restriction Sites: SgfI-MluI

Cloning Scheme:

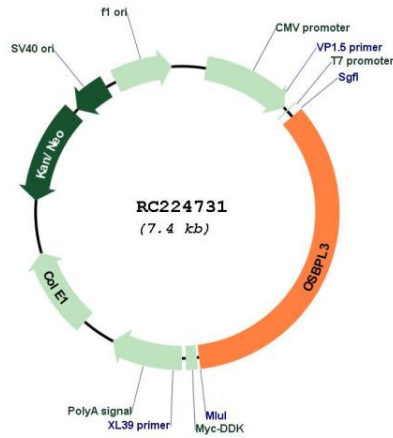
Cloning sites used for ORF Shuttling:



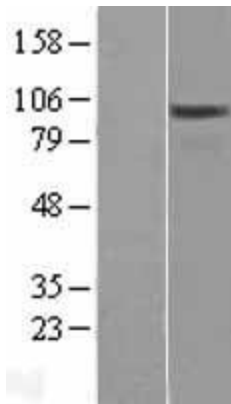
* The last codon before the Stop codon of the ORF

ACCN:	NM_145320
ORF Size:	2565 bp
OTI Disclaimer:	The molecular sequence of this clone aligns with the gene accession number as a point of reference only. However, individual transcript sequences of the same gene can differ through naturally occurring variations (e.g. polymorphisms), each with its own valid existence. This clone is substantially in agreement with the reference, but a complete review of all prevailing variants is recommended prior to use. More info
OTI Annotation:	This clone was engineered to express the complete ORF with an expression tag. Expression varies depending on the nature of the gene.
Components:	The ORF clone is ion-exchange column purified and shipped in a 2D barcoded Matrix tube containing 10ug of transfection-ready, dried plasmid DNA (reconstitute with 100 ul of water).
Reconstitution Method:	<ol style="list-style-type: none">1. Centrifuge at 5,000xg for 5min.2. Carefully open the tube and add 100ul of sterile water to dissolve the DNA.3. Close the tube and incubate for 10 minutes at room temperature.4. Briefly vortex the tube and then do a quick spin (less than 5000xg) to concentrate the liquid at the bottom.5. Store the suspended plasmid at -20°C. The DNA is stable for at least one year from date of shipping when stored at -20°C.
RefSeq:	NM_145320.2 , NP_663160.1
RefSeq Size:	6637 bp
RefSeq ORF:	2571 bp
Locus ID:	26031
UniProt ID:	Q9H4L5
Cytogenetics:	7p15.3
MW:	97.5 kDa
Gene Summary:	This gene encodes a member of the oxysterol-binding protein (OSBP) family, a group of intracellular lipid receptors. Most members contain an N-terminal pleckstrin homology domain and a highly conserved C-terminal OSBP-like sterol-binding domain. The encoded protein is involved in the regulation of cell adhesion and organization of the actin cytoskeleton. Alternative splicing results in multiple transcript variants. [provided by RefSeq, Aug 2013]

Product images:



Circular map for RC224731



Western blot validation of overexpression lysate (Cat# [LY407964]) using anti-DDK antibody (Cat# [TA50011-100]). Left: Cell lysates from untransfected HEK293T cells; Right: Cell lysates from HEK293T cells transfected with RC224731 using transfection reagent MegaTran 2.0 (Cat# [TT210002]).