

Product datasheet for RC224727

CALML4 (NM_033429) Human Tagged ORF Clone

Product data:

Product Type:	Expression Plasmids
Product Name:	CALML4 (NM_033429) Human Tagged ORF Clone
Tag:	Myc-DDK
Symbol:	CALML4
Synonyms:	NY-BR-20
Mammalian Cell Selection:	Neomycin
Vector:	pCMV6-Entry (PS100001)
E. coli Selection:	Kanamycin (25 ug/mL)
ORF Nucleotide Sequence:	>RC224727 representing NM_033429 Red=Cloning site Blue=ORF Green=Tags(s)

TTTTGTAATACGACTCACTATAGGGCGGCCGGAATTCGTCGACTGGATCCGGTACCGAGGAGATCTGCC
GCC**CGATCGCC**

ATGGCAGCCGAGCATTTATTACCCGGCCCTCCACCCAGCTTGGCAGACTTTAGACTTGAGGCTGGAGGAA
AGGGAAGTGAACGCGTTCTGGGAGCAGCAAGCCACGGGTAGCAGCCGAGGCCCCAGAATGGCCAAAGT
TCTTTCCCAAGACCAAATTAATGAGTACAAGGAATGCTTCTCCCTGTATGACAAGCAGCAGAGGGGGAAG
ATAAAAGCCACCGACCTCATGGTGGCCATGAGGTGCCTGGGGCCAGCCGACCCAGGGGAGGTGCAGC
GGCACCTGCAGACCCACGGGATAGACGGAAATGGAGAGCTGGATTCTCCACTTTTCTGACCATTATGCA
CATGCAAATAAAACAAGAAGACCCAAAGAAAGAAATTCTTCTAGCCATGTTGATGGTGGACAAGGAGAAG
AAAGGTTACGTACATGGCGTCCGACCTGCGGTCAAACCTCACGAGTCTGGGGGAGAAGCTCACCCACAAGG
AAGTGGATGATCTCTTCAGGGAAGCAGATATCGAACCCAATGGCAAAGTGAAGTATGATGAATTTATCCA
CAAGATCACCTTCTGGACGGGACTAT

ACGCGTACGCGGCCGCTCGAGCAGAACTCATCTCAGAAGAGGATCTGGCAGCAAATGATATCCTGGATT
ACAAGGATGACGACGATAAGGTTTAA

Protein Sequence:	>RC224727 representing NM_033429 Red=Cloning site Green=Tags(s)
-------------------	--

MAAEHLLPGPPSLADFRLEAGGKGTERRGSGSSKPTGSSRGRMAKFLSQDQINEYKECFSLYDKQQRGK
IKATDLMVAMRCLGASPTPEVQRHLQTHGIDNGELDFSTFLTIMHMQIKQEDPKKEILLAMLVDEK
KGYVMASDLRSKLTSLGEKLTHTKEVDDLFRADIEPNGVKYKDEFIHKITLPGRDY

TRTRPLEQKLISEEDLAANDILDYKDDDDKV



[View online »](#)

Chromatograms: https://cdn.origene.com/chromatograms/mk8045_c06.zip

Restriction Sites: SgfI-MluI

Cloning Scheme:



ACCN: NM_033429

ORF Size: 588 bp

OTI Disclaimer: The molecular sequence of this clone aligns with the gene accession number as a point of reference only. However, individual transcript sequences of the same gene can differ through naturally occurring variations (e.g. polymorphisms), each with its own valid existence. This clone is substantially in agreement with the reference, but a complete review of all prevailing variants is recommended prior to use. [More info](#)

OTI Annotation: This clone was engineered to express the complete ORF with an expression tag. Expression varies depending on the nature of the gene.

Components: The ORF clone is ion-exchange column purified and shipped in a 2D barcoded Matrix tube containing 10ug of transfection-ready, dried plasmid DNA (reconstitute with 100 ul of water).

Reconstitution Method:

1. Centrifuge at 5,000xg for 5min.
2. Carefully open the tube and add 100ul of sterile water to dissolve the DNA.
3. Close the tube and incubate for 10 minutes at room temperature.
4. Briefly vortex the tube and then do a quick spin (less than 5000xg) to concentrate the liquid at the bottom.
5. Store the suspended plasmid at -20°C. The DNA is stable for at least one year from date of shipping when stored at -20°C.

RefSeq: [NM_033429.2](#), [NP_219501.2](#)

RefSeq Size: 4655 bp

RefSeq ORF: 462 bp

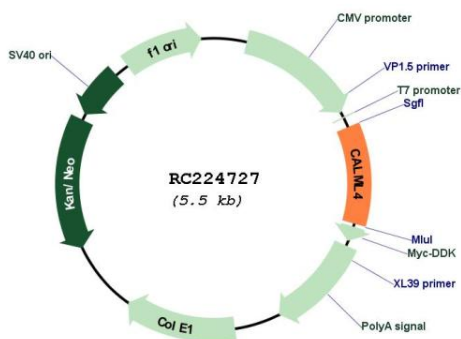
Locus ID: 91860

UniProt ID: [Q96GE6](#)

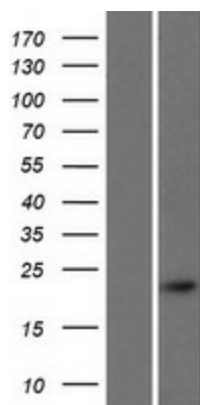
Cytogenetics: 15q23

MW: 21.7 kDa

Product images:



Circular map for RC224727



Western blot validation of overexpression lysate (Cat# [LY409552]) using anti-DDK antibody (Cat# [TA50011-100]). Left: Cell lysates from untransfected HEK293T cells; Right: Cell lysates from HEK293T cells transfected with RC224727 using transfection reagent MegaTran 2.0 (Cat# [TT210002]).