

## Product datasheet for **RC224725**

### **TMPRSS4 (NM\_001083947) Human Tagged ORF Clone**

#### **Product data:**

Product Type:	Expression Plasmids
Product Name:	TMPRSS4 (NM_001083947) Human Tagged ORF Clone
Tag:	Myc-DDK
Symbol:	TMPRSS4
Synonyms:	CAP2; CAPH2; MT-SP2; TMPRSS3
Mammalian Cell Selection:	Neomycin
Vector:	pCMV6-Entry (PS100001)
E. coli Selection:	Kanamycin (25 ug/mL)



[View online »](#)

**ORF Nucleotide Sequence:**

>RC224725 representing NM\_001083947  
 Red=Cloning site Blue=ORF Green=Tags(s)

TTTTGTAATACGACTCACTATAGGGCGGCCGGAATTCGTCGACTGGATCCGGTACCGAGGAGATCTGCC  
 GCC**CGGATCGCC**

ATGTTACAGGATCCTGACAGTGATCAACCTCTGAACAGCCTCGATGTCAAACCCCTGCGCAAACCCCGTA  
 TCCCATGGAGACCTTCAGAAAGGTGGGATCCCATCATCATAGCACTACTGAGCCTGGCGAGTATCAT  
 CATTGTGGTTGTCTCATCAAGGTGATTCTGGATAAATACTACTTCTCTGCGGGCAGCCTCTCCACTTC  
 ATCCCAGGAAGCAGCTGTGTGACGGAGAGCTGGACTGTCCCTTGGGGGAGGACGAGGAGCACTGTGTCA  
 AGAGCTTCCCGAAGGGCCTGCAGTGGCAGTCCGCCTCTCAAGGACCGATCCACACTGCAGGTGCTGGA  
 CTCGGCCACAGGAACTGGTTCTCTGCCTGTTTCGACAACCTCACAGAAGCTCTCGCTGAGACAGCCTGT  
 AGGCAGATGGGCTACAGCAGAGCTGTGGAGATTGGCCAGACCAGGATCTGGATGTTGTTGAAATCACAG  
 AAAACAGCCAGGAGCTTCGCATCGGAACTCAAGTGGGCCCTGTCTCTCAGGCTCCCTGGTCTCCCTGCA  
 CTGCTTTCCTGTGGGAAGACCTGAAGACCCCGTGTGGTGGTGGGAGGAGCCTCTGTGGATTCT  
 TGGCCTTGGCAGTCCAGTACGACAAACAGCAGCTCTGTGGAGGAGCATCCTGGACCCCACT  
 GGGTCTCACGGCAGCCACTGCTTCAGGAAACATACCGATGTGTTCAACTGGAAGGTGCGGGCAGGCTC  
 AGACAACTGGGAGCTTCCCATCCCTGGCTGTGGCAAGATCATCATATTGAATTAACCCCATGTAC  
 CCCAAAGACAATGACATCGCCCTCATGAAGCTGCAGTTCACACTCACTTCTCAGGCACAGTCAAGCCCA  
 TCTGTCTGCCCTCTTTGATGAGGAGCTCACTCCAGCCACCCACTCTGGATCATTGGATGGGGCTTTAC  
 GAAGCAGAATGGAGGGAAGATGTCTGACATACTGCTGCAGGCGTCACTCCAGGTCATTGACAGCACACGG  
 TGCAATGCAGACGATGCGTACCAGGGGAAGTACCCGAGAAGATGATGTGTGCAGGCATCCCGAAGGGG  
 GTGTGGACACCTGCCAGGGTGACAGTGGTGGGCCCTGATGTACCAATCTGACCAGTGGCATGTGGTGGG  
 CATCGTTAGTTGGGCTATGGCTGCGGGGCCGAGCACCCAGGAGTATACACCAAGGTCTCAGCCTAT  
 CCAACTGGATCTACAATGTCTGGAAGGCTGAGCTG

**ACGCGT**ACGCGGCCGCTCGAGCAGAACTCATCTCAGAAGAGGATCTGGCAGCAATGATATCCTGGATT  
 ACAAGGATGACGACGATAAGGTTTAA

**Protein Sequence:**

>RC224725 representing NM\_001083947  
 Red=Cloning site Green=Tags(s)

MLQDPDSQPLNSLDVKPLRKPRIPMETFRKVGIPIIIIALLSLASIIIVVLIKVILDKYYFLCGQPLHF  
 IPRKQLCDGELDCPLGEDEEHCVKSFPEGPAVAVRLSKDRSTLQVLD SATGNWFSACFDNFTEAL AETAC  
 RQMGYSRAVEIGPDQDL DVVEITENSQELRMRNSSGPCLSGSLVSLHCLACGKSLKTPRVVGGEEASVDS  
 WPWQVSIQYDKQHVC GGSILDPHWL TAAHCFRKHTDVFNWKVRAGSDKLG SFPSLAVAKIIIEFNPMY  
 PKDNDIALMKLQFPLTFSGTVRPICLPFFDEELTPATPLWIIIGWFTKQNGGKMSDILLQASVQVIDSTR  
 CNADDAYQGEVTEKMM CAGIPEGGVDTCQGDSSGPLMYQSDQWHVVGIVSWGYCCGPSTPGVYTKVSAY  
 LNWIYNVWKAEL

**TR**TRPLEQKLISEEDLAANDILDYKDDDDKV

**Chromatograms:**

[https://cdn.origene.com/chromatograms/mk8059\\_e08.zip](https://cdn.origene.com/chromatograms/mk8059_e08.zip)

**Restriction Sites:**

Sgfl-Mlul

**Cloning Scheme:**


**ACCN:** NM\_001083947

**ORF Size:** 1296 bp

**OTI Disclaimer:** The molecular sequence of this clone aligns with the gene accession number as a point of reference only. However, individual transcript sequences of the same gene can differ through naturally occurring variations (e.g. polymorphisms), each with its own valid existence. This clone is substantially in agreement with the reference, but a complete review of all prevailing variants is recommended prior to use. [More info](#)

**OTI Annotation:** This clone was engineered to express the complete ORF with an expression tag. Expression varies depending on the nature of the gene.

**Components:** The ORF clone is ion-exchange column purified and shipped in a 2D barcoded Matrix tube containing 10ug of transfection-ready, dried plasmid DNA (reconstitute with 100 ul of water).

**Reconstitution Method:**

1. Centrifuge at 5,000xg for 5min.
2. Carefully open the tube and add 100ul of sterile water to dissolve the DNA.
3. Close the tube and incubate for 10 minutes at room temperature.
4. Briefly vortex the tube and then do a quick spin (less than 5000xg) to concentrate the liquid at the bottom.
5. Store the suspended plasmid at -20°C. The DNA is stable for at least one year from date of shipping when stored at -20°C.

**RefSeq:** [NM\\_001083947.1](#), [NP\\_001077416.1](#)

**RefSeq Size:** 3534 bp

**RefSeq ORF:** 1299 bp

**Locus ID:** 56649

**UniProt ID:** [Q9NRS4](#)

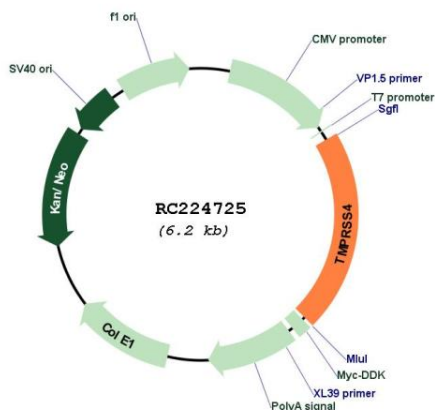
**Cytogenetics:** 11q23.3

**Protein Families:** Druggable Genome, Protease, Transmembrane

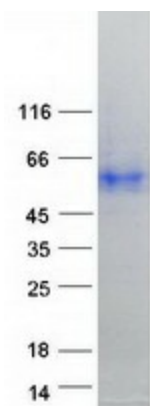
**MW:** 47.5 kDa

**Gene Summary:** This gene encodes a member of the serine protease family. Serine proteases are known to be involved in a variety of biological processes, whose malfunction often leads to human diseases and disorders. This gene was identified as a gene overexpressed in pancreatic carcinoma. The encoded protein is membrane bound with a N-terminal anchor sequence and a glycosylated extracellular region containing the serine protease domain. Multiple transcript variants encoding different isoforms have been found for this gene. [provided by RefSeq, Jul 2008]

**Product images:**



Circular map for RC224725



Coomassie blue staining of purified TMPRSS4 protein (Cat# [TP324725]). The protein was produced from HEK293T cells transfected with TMPRSS4 cDNA clone (Cat# RC224725) using MegaTran 2.0 (Cat# [TT210002]).