

Product datasheet for **RC224723**

PTCHD3 (NM_001034842) Human Tagged ORF Clone

Product data:

Product Type:	Expression Plasmids
Product Name:	PTCHD3 (NM_001034842) Human Tagged ORF Clone
Tag:	Myc-DDK
Symbol:	PTCHD3
Synonyms:	PTR
Mammalian Cell Selection:	Neomycin
Vector:	pCMV6-Entry (PS100001)
E. coli Selection:	Kanamycin (25 ug/mL)



[View online »](#)

ORF Nucleotide Sequence:

>RC224723 representing NM_001034842
 Red=Cloning site Blue=ORF Green=Tags(s)

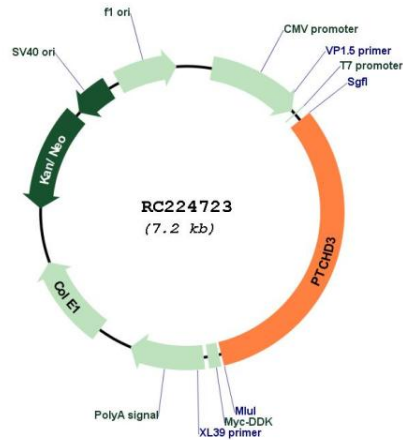
TTTTGTAATACGACTCACTATAGGGCGGCCGGGAATTCGTCGACTGGATCCGGTACCGAGGAGATCTGCC
 GCC**GCGATCGCC**

ATGCCGTGGGTGGAGCCCAAGCCAGGCCGGGGCCGGAGCAGAAGCCCAAGCTCACCAAACCGACTCTG
 CCACCGGGCCGCAGTGGTACCAGGAATCTCAGGAATCGGAGTCGAAGGCAAGCAGCCACCCCGGGACC
 CCTGGCACCCCGAAATCCCCGAACCCTCAGGACCCCTGGCGTCGGAGCAGGATGCACCCTGCCAGAG
 GGGGACGATGCACCCCGCGCGTCGATGCTGGACGATGCACCCCGCTGCCGCTGGAGCTGGACGATG
 CACCCCTGCCGGAGGAGAAACCCCGAACCCACGGCCATCTGCAGGCACCGGCACCGCTGTACACCGA
 CTGCTAGAGGGGCTGCTGTCCCGCACCTTCCAGTGGCTGGGGTGGCAGGTGGGCGCGCACCCCTGGATC
 TTCCTGCTGGCGCCCTTGATGCTGACAGCCGCGCGGGCACCGGCTTCTGTACCTACCCAAGGACGAAG
 AAGAAGACCTAGAGGAGCATTACACCCCTGTGGGAGCCCGCCAAGGCGGAGCGGCGCTTCGTGCAGGG
 CCATTTACCACCAACGACTCCTACCGCTTCTCCGCTCCAGGAGGAGCACCGAAGCCAATTTCTGCTCG
 TTCTGGTGGTCTCTACAGCGACTCACTGCTGGACCCAGCTACCTTTCAGAAGTCAGCAAACCTGGACG
 GCGCGGTGCAGGATCTGCGCGTGGCGCGGAAAAGGGAAGCCAGATCCAGTACCAGCAGGTGTGCCGAG
 GTACAGGGCGCTGCGTGCACCCCAACCCGATCCTGTACGCCTGGCAGGTGAACAAAACGCTCAACCTG
 AGCAGCATCTCCTCCCCGCTACAACCACGGCAGGCATCCCCTACCTGACCGGCTTCTTCGGAGGAT
 ACATCTTGGGGGGCAGCCTAGGAATGGGCCAGTTACTCTGCGGGCCAAAGCCATGCGGCTGCTGTACTA
 CCTGAAGACCGAGGACCTGAGTACGACGTACAGAGCAAGCAGTGGCTCACCCATTTGCTCGATCAATTT
 ACCAACATTAAGAATCTTGGCCTTGAATAAATTTGAGGTAGTCCACTTACATCGCTTCCAGACAAC
 TGAATTTGAGGCAACTTCTGTGACTGTGATCCCTGTGTTTACCTGGCATACTTCTCATCATTCTGTT
 TGCAGTCACATCATGCTTTAGGTTTACTGCATACGAAACAAAATGTGTGTTGCGGCTTTGGAGTGATT
 TCTGCTTCTTGGCAGTGGTGGCGGCTTTGGCCTGCTGTTGCACATTGGGGTGCCATTTGTCATCATAG
 TTGCCAATACCATTTCTTATTCTAGGTGTTGGGGTCGATGACATGTTTATCATGATTTCTGCCTGGCA
 TAAGACCAACCTTGCAGATGACATACGAGAGCGGATGTCCAATGTCTATTCAAAGCGGCAGTGTCTATT
 ACAATCACCAACCTCACTAACATCCTGGCCTTATATACAGGGATTATGAGCTCTTTTAGGCTGTACAAT
 GTTTTTGCATCTATACAGGAATGACCCTGTTATTTTGTATTTTTATAACATCACGTGTTTTGGAGCATT
 TATGGCCTTGGATGGTAAAAGAGAAGTAGTCTGCCTATGCTGGTTGAAAAAGGCTGACCCAAAATGGCCC
 TCATTTAAAAGTTCTGCTGTTTCCATTTGGTTCTGTCCAGATGAACATGGAAGTATATCCATCCAA
 TGAGTTTGTTTTTAGAGACTATTTGGCCCTTCTCACAAGGAGTGAGTCCAAGTATTTGTAGTCTT
 TATATATGTTTTGTACATCATAAGCAGTATATATGGGTGTTTCCATGTGCAGGAAGGTTTAGACCTCGA
 AATCTGGCAAGTGACGATTCTACATCACACCATATTTAACGTAGAGGAGAATTATTTTCAGATTATG
 GTCCCAGGGTTATGGTTATTGTTACTAAAAAGTTGACTACTGGGATAAAGATGTTAGGCCAAAACTGGA
 AAAGTGTACTAAAATTTTTGAAAAAATGTCTATGTAGATAAAAAATCTTACAGAGTTTTGGTTAGATGCA
 TATGTGCAATATTTAAAAGGTAACAGCCAAGATCCTAATGAGAAGAATACTTTTATGAACAATATTCCTG
 ATTTTTAAGCAATTTTCAAATTTTCAGCATGATTAATATTTCTTCATCAAATGAAATCATTTCCTC
 CCGGGCTTCATTAGACAACAGATGTTTCTTCTCAGCCAAAAGAAAATATTGTTATTC

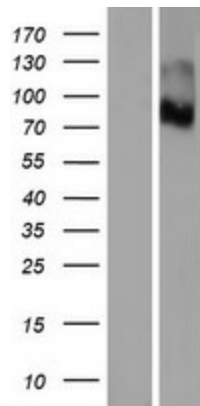
**ACGCGTACGCGGCCGCTCGAGCAGAACTCATCTCAGAAGAGGATCTGGCAGCAAATGATATCCTGGATT
 ACAAGGATGACGACGATAAGGTTTAA**

OTI Disclaimer:	<p>Due to the inherent nature of this plasmid, standard methods to replicate additional amounts of DNA in E. coli are highly likely to result in mutations and/or rearrangements. Therefore, OriGene does not guarantee the capability to replicate this plasmid DNA. Additional amounts of DNA can be purchased from OriGene with batch-specific, full-sequence verification at a reduced cost. Please contact our customer care team at custsupport@origene.com or by calling 301.340.3188 option 3 for pricing and delivery.</p> <p>The molecular sequence of this clone aligns with the gene accession number as a point of reference only. However, individual transcript sequences of the same gene can differ through naturally occurring variations (e.g. polymorphisms), each with its own valid existence. This clone is substantially in agreement with the reference, but a complete review of all prevailing variants is recommended prior to use. More info</p>
OTI Annotation:	This clone was engineered to express the complete ORF with an expression tag. Expression varies depending on the nature of the gene.
Components:	The ORF clone is ion-exchange column purified and shipped in a 2D barcoded Matrix tube containing 10ug of transfection-ready, dried plasmid DNA (reconstitute with 100 ul of water).
Reconstitution Method:	<ol style="list-style-type: none"> 1. Centrifuge at 5,000xg for 5min. 2. Carefully open the tube and add 100ul of sterile water to dissolve the DNA. 3. Close the tube and incubate for 10 minutes at room temperature. 4. Briefly vortex the tube and then do a quick spin (less than 5000xg) to concentrate the liquid at the bottom. 5. Store the suspended plasmid at -20°C. The DNA is stable for at least one year from date of shipping when stored at -20°C.
RefSeq:	NM_001034842.2
RefSeq Size:	2375 bp
RefSeq ORF:	2304 bp
Locus ID:	374308
UniProt ID:	Q3KNS1
Cytogenetics:	10p12.1
Protein Families:	Transmembrane
MW:	86.7 kDa
Gene Summary:	May play a role in sperm development or sperm function.[UniProtKB/Swiss-Prot Function]

Product images:



Circular map for RC224723



Western blot validation of overexpression lysate (Cat# [LY421967]) using anti-DDK antibody (Cat# [TA50011-100]). Left: Cell lysates from untransfected HEK293T cells; Right: Cell lysates from HEK293T cells transfected with RC224723 using transfection reagent MegaTran 2.0 (Cat# [TT210002]).