

Product datasheet for **RC224720**

PLXDC2 (NM_032812) Human Tagged ORF Clone

Product data:

| | |
|---------------------------|---|
| Product Type: | Expression Plasmids |
| Product Name: | PLXDC2 (NM_032812) Human Tagged ORF Clone |
| Tag: | Myc-DDK |
| Symbol: | PLXDC2 |
| Synonyms: | TEM7R |
| Mammalian Cell Selection: | Neomycin |
| Vector: | pCMV6-Entry (PS100001) |
| E. coli Selection: | Kanamycin (25 ug/mL) |



[View online »](#)

ORF Nucleotide Sequence:

>RC224720 representing NM_032812
 Red=Cloning site Blue=ORF Green=Tags(s)

TTTTGTAATACGACTCACTATAGGGCGGCCGGAATTCGTCGACTGGATCCGGTACCGAGGAGATCTGCC
 GCC**CGGATCGCC**

ATGGCGAGGTTCCCGAAGGCCGACCTGGCCGCTGCAGGAGTTATGTTACTTTGCCACTTCTTCACGGACC
 AGTTTCAGTTCGCGGATGGGAAACCCGGAGACCAATCCTTGATTGGCAGTATGGAGTTACTCAGGCCTT
 CCCTCACACAGAGGAGGAGGTGGAAGTTGATTCACACGCGTACAGCCACAGGTGGAAAAGAACTTGGAC
 TTTCTCAAGGCGGTAGACACGAACCGAGCAAGCGTCGGCCAAGACTCTCCTGAGCCAGAAGCTTCACAG
 ACCTGCTGCTGGATGATGGGCAGGACAATAACTCAGATCGAGGAGGATACAGACCACAATTACTATAT
 ATCTCGAATATATGGTCCATCTGATTCTGCCAGCCGGATTTATGGGTGAACATAGACCAATGGAAAA
 GATAAAGTGAAGATTCATGGAATATTGTCCAATACTCATCGGCAAGCTGCAAGAGTGAATCTGCTCTCG
 ATTTTCCATTTTATGGCCACTTCTACGTGAAATCACTGTGGCAACCGGGGGTTTCATATACACTGGAGA
 AGTCGTACATCGAATGCTAACAGCCACACAGTACATAGCACCTTAAATGGCAAATTCGATCCCAGTGTA
 TCCAGAAATCAACTGTCAGATATTTGATAATGGCACAGCACTTGTGGTCCAGTGGGACCATGTACATC
 TCCAGGATAATTATAACCTGGGAAGCTTACATTCAGGCAACCCGTCTCATGGATGGACGAATCATCTT
 TGGATACAAAAGAAATTCCTGTCTTGGTCACACAGATAAGTTCAACCAATCATCCAGTGAAGTCCGACTG
 TCCGATGCATTTGTCTGTCCACAGGATCCAACAAATCCCAATGTTCCGAAGAAGAACAATTTATGAAT
 ACCACCGAGTAGAGCTACAAATGTCAAAAATACCAACATTTCCGCTGTGGAGATGACCCCATACCCAC
 ATGCCTCCAGTTAACAGATGTGGCCCTGTGTATCTTCTCAGATTGGCTTCACTGCAGTTGGTGTAGT
 AAATCTCAAAGATGTTCCAGTGGATTTGATCGTCATCGGCAGGACTGGGTGGACAGTGGATGCCCTGAAG
 AGTCAAAAAGAGAAGATGTGTGAGAATACAGAACCAGTGGAACTTCTTCTCGAACCACCAACCCAGTGG
 AGCGACAACCACCCAGTTCAGGGTCTTAACACCAGAACAGAGCAGTGAATTCAGTTTCCACACAGC
 CTCCCTACAGAAGATGATACCAAGATAGCACTACATCTAAAAGATAATGGAGCTTCTACAGATGACAGTG
 CAGCTGAGAAGAAAGGGGAACCCCTCCACGCTGGCCTCATCATTGGAATCCTCATCCTGGTCTCATTGT
 AGCCACAGCCATTCTGTGACAGTCTATATGTATCACCACCAACATCAGCAGCCAGCATCTTCTTTATT
 GAGAGACGCCAAGCAGATGGCCTGCGATGAAGTTAGAAGAGGCTCTGGACATCCTGCCTATGCTGAAG
 TTGAACCGATTGGAGAGAAAGAAGGCTTTATTGTATCAGAGCAGTGC

AG**CGGACCG**ACGCGTACGCGGCCGCTCGAGCAGAACTCATCTCAGAAGAGGATCTGGCAGCAAATGATATCC
 TGGATTACAAGGATGACGACGATAAGGTTTAA

Protein Sequence:

>RC224720 representing NM_032812
 Red=Cloning site Green=Tags(s)

MARFPKADLAAAGVMLLCHFFTDQFQFADGKPGDQILDWQYGVTVQAFPHTEEEVEVDSDHAYSHRWKRNLD
 FLKAVDTNRASVGQDSPEPRSFDTLLDDGQDNNTQIEEDTDHNYYSRIYGPSDSASRDLVWNIDQMEK
 DKVKIHGILSNTHRQAARVNL SFDPPFYGHFLREITVATGGFIYTGVEVHRMLTATQYIAPLMANFDPSV
 SRNSTVRYFDNGTALVVQWDHVHLQDNYNLGSFTFQATLLMDGRIIFGYKEIPVLVTQISSNHPVKVGL
 SDAFVVVHRIQQIPNVRRTIYEVHRVELQMSKITNISAVEMTLPCLQFNRCGPCVSSQIGFNCSWCS
 KLQRCSSGFDRHRQDWVDSGCPEESKEKMCENTEPVETSSRTTTTVGATTTQFRVLTTRRAVTSQFPTS
 LPTEDDTKIALHLKDNASTDSDAAEKGGTLHAGLIIGILILVLIVATAILVTVMYHHPTSAASIFFI
 ERRPSRWPAMKFRRGSGHPAYAEVEPVGEKEGFIVSEQC

SGPTRRRLEQKLISEEDLAANDILDYKDDDDKV

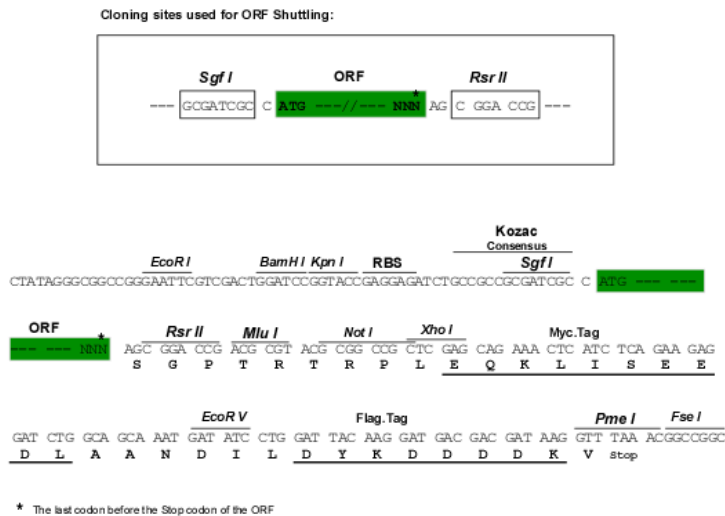
Chromatograms:

https://cdn.origene.com/chromatograms/mk8011_e05.zip

Restriction Sites:

Sgfl-RsrII

Cloning Scheme:



ACCN: NM_032812

ORF Size: 1587 bp

OTI Disclaimer: The molecular sequence of this clone aligns with the gene accession number as a point of reference only. However, individual transcript sequences of the same gene can differ through naturally occurring variations (e.g. polymorphisms), each with its own valid existence. This clone is substantially in agreement with the reference, but a complete review of all prevailing variants is recommended prior to use. [More info](#)

OTI Annotation: This clone was engineered to express the complete ORF with an expression tag. Expression varies depending on the nature of the gene.

Components: The ORF clone is ion-exchange column purified and shipped in a 2D barcoded Matrix tube containing 10ug of transfection-ready, dried plasmid DNA (reconstitute with 100 ul of water).

- Reconstitution Method:
1. Centrifuge at 5,000xg for 5min.
 2. Carefully open the tube and add 100ul of sterile water to dissolve the DNA.
 3. Close the tube and incubate for 10 minutes at room temperature.
 4. Briefly vortex the tube and then do a quick spin (less than 5000xg) to concentrate the liquid at the bottom.
 5. Store the suspended plasmid at -20°C. The DNA is stable for at least one year from date of shipping when stored at -20°C.

RefSeq: [NM_032812.9](#)

RefSeq Size: 2594 bp

RefSeq ORF: 1590 bp

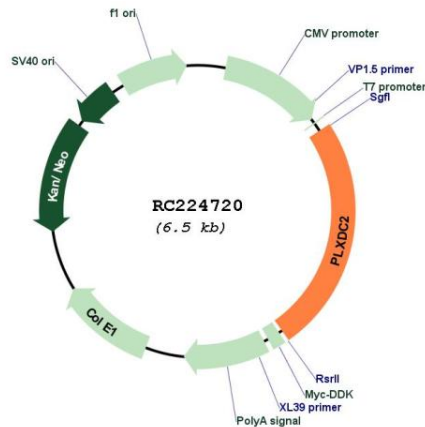
Locus ID: 84898

UniProt ID: [Q6UX71](#)

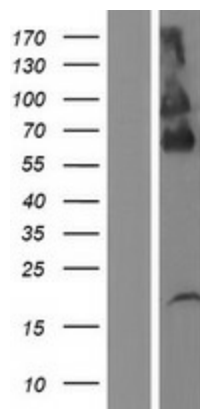
Cytogenetics: 10p12.31

Domains: PSI
 Protein Families: Druggable Genome, Transmembrane
 MW: 59.4 kDa
 Gene Summary: May play a role in tumor angiogenesis.[UniProtKB/Swiss-Prot Function]

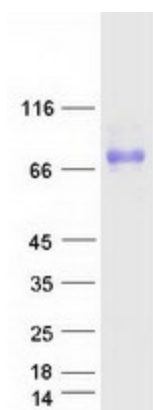
Product images:



Circular map for RC224720



Western blot validation of overexpression lysate (Cat# [LY409939]) using anti-DDK antibody (Cat# [TA50011-100]). Left: Cell lysates from untransfected HEK293T cells; Right: Cell lysates from HEK293T cells transfected with RC224720 using transfection reagent MegaTran 2.0 (Cat# [TT210002]).



Coomassie blue staining of purified PLXDC2 protein (Cat# [TP324720]). The protein was produced from HEK293T cells transfected with PLXDC2 cDNA clone (Cat# RC224720) using MegaTran 2.0 (Cat# [TT210002]).