

Product datasheet for **RC224715**

ZNF611 (NM_030972) Human Tagged ORF Clone

Product data:

Product Type:	Expression Plasmids
Product Name:	ZNF611 (NM_030972) Human Tagged ORF Clone
Tag:	Myc-DDK
Symbol:	ZNF611
Vector:	pCMV6-Entry (PS100001)
E. coli Selection:	Kanamycin (25 ug/mL)
Cell Selection:	Neomycin



[View online »](#)

ORF Nucleotide
Sequence:

>RC224715 representing NM_030972
Red=Cloning site Blue=ORF Green=Tags(s)

TTTTGTAATACGACTCACTATAGGGCGGCCGGAATTCGTCGACTGGATCCGGTACCGAGGAGATCTGCC
GCCGCGATCGCC

ATGTTACGTGAGGAAGCAGCTCAGAAGAGGAAAGGAAAGGAGCCAGGCATGGCTCTTCTCAGGGACGCT
TGACTTTCCGGGATGTGGCTATAGAATTCATTGGCAGAGTGGAAATGCCTGAACCTTACAGAGGGC
TTTGTACAGGGAAGTGATGTTGGAGAATACAGGAACCTGGAGGCTGTGGATATCTTCCAAATGCATG
ATGAAGGAGGTCTTGTAACAGGGCAAGGCAATACAGAAGTGATCCACACAGGGACATTGCAAAGACATG
AAAGTCATCACATTGGAGATTTTGTCTCCAGGAAATTGAGAAAGAAATTCATGACATTGAGTTTCAGTG
TCAAGAAGATGAAAGAAATGGCCTTGAAGCACCCATGACAAAAATAAAAAAGTTGACTGGTAGCACAGAC
CAACATGATCACAGGCATGCTGGAAACAAGCCTATTAAGATCAGCTTGGATCAAGCTTTTATTCACATC
TGCTGAACTCCACATATTTAGATCAAAGGTGAAATTTGGTAATCAACTTGAGAAGTCTACTAATGATGC
TCCCTCAGTTTCAACATTCCAAAGAATTTCTGTAGGCCCAAACCCAGATTTCTAATAACTATGGGAAT
AATCCCTGAATTCCTTACTCCACAAAAACAGGAAGTACACATGAGAGAAAAATCTTCCAAATGTA
ATAAGAGTGGCAAAGCCTTAATTGTAGCTCACTTAAGGAAACACCAGATACCCCATTTAGGAGACAA
ACAATATAAATGTGATGTATGTGGCAAGCTTTAATCACGAGCAATACCTTGCATGCCATGATAGATGT
CACACTGTTGAGAAACCTTACAAGTGTAAAGAGTGTGGCAAGACCTTCAGTCAGGAGTCATCCCTTACCT
GCCATCGTAGACTTCATACTGGAGTAAAACGTTACAATTTGTAATGAGTGTGGCAAGATCTTTGGTCAAAA
TTCAGCCCTTCTAATTGATAAGGCAATTGATACTGGAGAAAAATCCTTACAAGTGAATGAATGTGACAAG
GCTTTTAAATCAACAATCACAACCTTTCACATCATAGAATTCATACTGGAGAGAAACCTTACAATGTGAAG
AATGTGACAAAGTTTTTCAGTCGGAAATCAACCATTGAGACACATAAGAGAATTCATACTGGAGAGAAACC
ATACAGATGTAAGGTTTTGTGACACAGCTTTCACGTGGCATTACAGCTGGCTCGACATAGAAGAATTCAT
ACTGCAAAGAAAACCTTATAAATGTAATGAGTGTGGCAAGACCTTCAGTCACAAGTCATCCCTTGTATGCC
ATCATAGACTTCATGGTGGAGAGAAATCTTACAAATGTAAGGTTTGTGACAAGGCTTTTGTGAGGTTT
ACAACCTGGCAAAACATACTAGAATTGACTGTGGAGAAAAACCTTACAAGTGAATGAATGTGGGAAGACC
TTTGGTCAAAATTCAGATCTTTAATTCATAAGTCAATTCATACTGGGGAGCAACCTTACAATGTGATG
AATGTGAAAAGGTTTTTCAGTCGTAATCAAGCCTTGGAGACACATAAGATAGGTCATACTGGAGAGAAACC
ATACAAATGTAAGGTTTGTGACAAGGCTTTTGCCTGTCATTCTATCTGGCAAAACATACTAGAATTCAT
AGTGGAGAGAAACCTTACAAGTGAATGAGTGCAGCAAGACCTTCAGTCACAGGTCATACCTTGTATGCC
ATCATAGAGTTTCATAGTGGTGGAGAAACCTTACAAGTGAATGAGTGCAGCAAGACCTTCAGTCGAGGTC
ATCCCTTCATTGCCATCGTAGACTTCATAGTGGTGGAGAAACCTTACAAGTGAATGAGTGTGGCAATACC
TTCCGTCACTGCTCATCCCTTATATACCATCGTAGACTTCATACTGGAGAGAAATCTTACAATGTACAA
TTTGTGACAAGGCTTTTCGTGCGTAATCACTCCTGTCAAGACATAACCAGAATTCACACTGCAGAGAAACC
TTACAAGTGAATGAATGTGGGAAGGCTTTTAAATCAACAATCACACCTTTCACGTCATCATAGAATTCAT
ACTGGAGAGAAACCT

ACGCGTACGCGGCCGCTCGAGCAGAAACTCATCTCAGAAGAGGATCTGGCAGCAAATGATATCCTGGATT
ACAAGGATGACGACGATAAGGTTTAA

Protein Sequence: >RC224715 representing NM_030972
 Red=Cloning site Green=Tags(s)

MLREEAAQKRKGKEPGMALPQGRLTFRDVAIEFSLAEWKCLNPSQRALYREVMLENYRNLEAVDISSKCM
 MKEVLSTGGNTEVIHTGTLQRHESHIGDFCFQEIIEKEIHDIEFQCQEDERNGLEAPMTKIKKLTGSTD
 QHDDRHAGNKPIKDQLGSSFYSHLPELHIFQIKGEIGNQLEKSTNDAPSVSTFQRISCRPQTQISNNYGN
 NPLNSSLLPQKQEVHMREKSFQCNKSGKAFNCSSLLRKHQIPHLGDKQYKCDVCGKLFNHEQYLACHDRC
 HTVEKPYKCKEKGKTFSEQSSLTCHRRLHTGVKRYNCNECGKIFGQNSALLIDKAIDTGENPYKNECDK
 AFNQSSQLSHHRIHTGEKPYKCECDKVF SRKSTIETHKRIHTGEKPYRCKVCDTAFTWHSQARHRIH
 TAKKTYKNECGKTF SHKSSLVCHHRLHGGEKSYCKVCDKAFVWSSQLAKHTRIDCGEKPYKNECGKT
 FGQNSDLLIHKSIHTGEQPYKDECEKVF SRKSSLETHKIGTGEKPYKCKVCDKAFACHSYLAKHTRIH
 SGEKPYKNECSKTF SHRSYL VCHHRVHSGEKPYKNECSKTF SRSSLHCHRRLSGEEKPYKNECGNT
 FRHCSSLIYHRRLHTGEKSYKCTICDKAFVRNLLSRHTRIHTAEKPYKNECGKAFNQSHLSRHRIH
 TGEKP

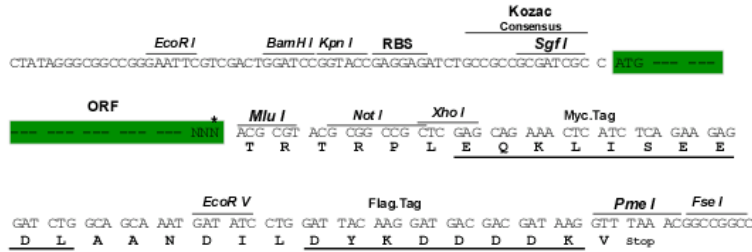
TRTRPLEQKLISEEDLAANDILDYKDDDDKV

Restriction Sites:

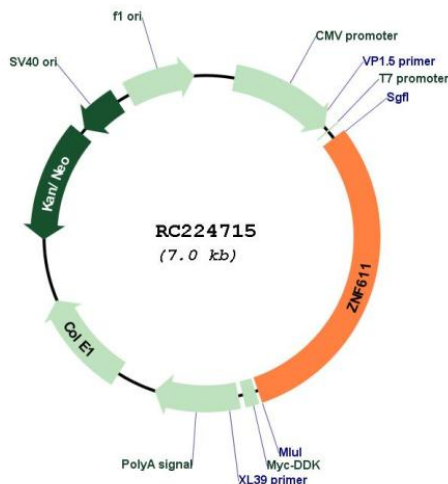
Sgfl-MluI

Cloning Scheme:

Cloning sites used for ORF Shuttling:



* The last codon before the Stop codon of the ORF

Plasmid Map:


ACCN: NM_030972

ORF Size: 2115 bp

OTI Disclaimer: The molecular sequence of this clone aligns with the gene accession number as a point of reference only. However, individual transcript sequences of the same gene can differ through naturally occurring variations (e.g. polymorphisms), each with its own valid existence. This clone is substantially in agreement with the reference, but a complete review of all prevailing variants is recommended prior to use. [More info](#)

OTI Annotation: This clone was engineered to express the complete ORF with an expression tag. Expression varies depending on the nature of the gene.

Components: The ORF clone is ion-exchange column purified and shipped in a 2D barcoded Matrix tube containing 10ug of transfection-ready, dried plasmid DNA (reconstitute with 100 ul of water).

Reconstitution Method:

1. Centrifuge at 5,000xg for 5min.
2. Carefully open the tube and add 100ul of sterile water to dissolve the DNA.
3. Close the tube and incubate for 10 minutes at room temperature.
4. Briefly vortex the tube and then do a quick spin (less than 5000xg) to concentrate the liquid at the bottom.
5. Store the suspended plasmid at -20°C. The DNA is stable for at least one year from date of shipping when stored at -20°C.

RefSeq: [NM_030972.3](#), [NP_112234.3](#)

RefSeq Size: 4559 bp

RefSeq ORF:	2118 bp
Locus ID:	81856
UniProt ID:	<u>Q8N823</u>
Cytogenetics:	19q13.41
Protein Families:	Transcription Factors
MW:	81.9 kDa
Gene Summary:	May be involved in transcriptional regulation.[UniProtKB/Swiss-Prot Function]