

Product datasheet for RC224714L1

AMPK alpha 1 (PRKAA1) (NM_206907) Human Tagged Lenti ORF Clone

Product data:

| | |
|---------------------------|--|
| Product Type: | Expression Plasmids |
| Product Name: | AMPK alpha 1 (PRKAA1) (NM_206907) Human Tagged Lenti ORF Clone |
| Tag: | Myc-DDK |
| Symbol: | AMPK alpha 1 |
| Synonyms: | AMPK; AMPKa1; AMPK alpha 1 |
| Mammalian Cell Selection: | None |
| Vector: | pLenti-C-Myc-DDK (PS100064) |
| E. coli Selection: | Chloramphenicol (34 ug/mL) |
| ORF Nucleotide Sequence: | The ORF insert of this clone is exactly the same as(RC224714). |
| Restriction Sites: | SgfI-MluI |
| Cloning Scheme: | |

Cloning sites used for ORF Shuttling:



* The last codon before the Stop codon of the ORF.

| | |
|-----------|-----------|
| ACCN: | NM_206907 |
| ORF Size: | 1722 bp |



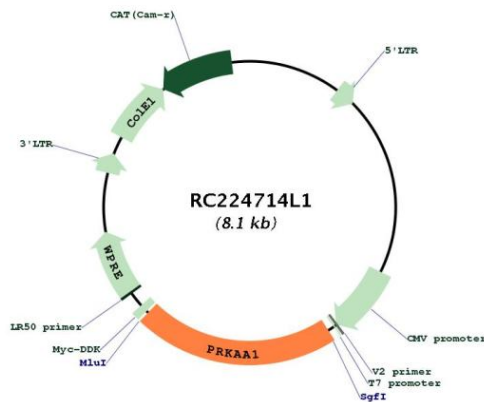
[View online >](#)

| | |
|-------------------------------|--|
| OTI Disclaimer: | <p>Due to the inherent nature of this plasmid, standard methods to replicate additional amounts of DNA in E. coli are highly likely to result in mutations and/or rearrangements. Therefore, OriGene does not guarantee the capability to replicate this plasmid DNA. Additional amounts of DNA can be purchased from OriGene with batch-specific, full-sequence verification at a reduced cost. Please contact our customer care team at custsupport@origene.com or by calling 301.340.3188 option 3 for pricing and delivery.</p> <p>The molecular sequence of this clone aligns with the gene accession number as a point of reference only. However, individual transcript sequences of the same gene can differ through naturally occurring variations (e.g. polymorphisms), each with its own valid existence. This clone is substantially in agreement with the reference, but a complete review of all prevailing variants is recommended prior to use. More info</p> |
| OTI Annotation: | <p>This clone was engineered to express the complete ORF with an expression tag. Expression varies depending on the nature of the gene.</p> |
| Components: | <p>The ORF clone is ion-exchange column purified and shipped in a 2D barcoded Matrix tube containing 10ug of transfection-ready, dried plasmid DNA (reconstitute with 100 ul of water).</p> |
| Reconstitution Method: | <ol style="list-style-type: none">1. Centrifuge at 5,000xg for 5min.2. Carefully open the tube and add 100ul of sterile water to dissolve the DNA.3. Close the tube and incubate for 10 minutes at room temperature.4. Briefly vortex the tube and then do a quick spin (less than 5000xg) to concentrate the liquid at the bottom.5. Store the suspended plasmid at -20°C. The DNA is stable for at least one year from date of shipping when stored at -20°C. |
| RefSeq: | <p>NM_206907.3, NP_996790.3</p> |
| RefSeq Size: | <p>5130 bp</p> |
| RefSeq ORF: | <p>1725 bp</p> |
| Locus ID: | <p>5562</p> |
| UniProt ID: | <p>Q13131</p> |
| Cytogenetics: | <p>5p13.1</p> |
| Protein Families: | <p>Druggable Genome, Protein Kinase</p> |
| Protein Pathways: | <p>Adipocytokine signaling pathway, Hypertrophic cardiomyopathy (HCM), Insulin signaling pathway, mTOR signaling pathway, Regulation of autophagy</p> |
| MW: | <p>65.3 kDa</p> |

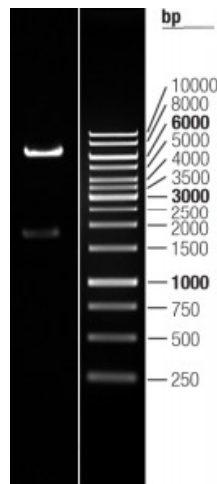
Gene Summary:

The protein encoded by this gene belongs to the ser/thr protein kinase family. It is the catalytic subunit of the 5'-prime-AMP-activated protein kinase (AMPK). AMPK is a cellular energy sensor conserved in all eukaryotic cells. The kinase activity of AMPK is activated by the stimuli that increase the cellular AMP/ATP ratio. AMPK regulates the activities of a number of key metabolic enzymes through phosphorylation. It protects cells from stresses that cause ATP depletion by switching off ATP-consuming biosynthetic pathways. Alternatively spliced transcript variants encoding distinct isoforms have been observed. [provided by RefSeq, Jul 2008]

Product images:



Circular map for RC224714L1



Double digestion of RC224714L1 using SgfI and MluI