

## Product datasheet for **RC224713**

### **C8ORF41 (TTI2) (NM\_001102401) Human Tagged ORF Clone**

#### **Product data:**

Product Type:	Expression Plasmids
Product Name:	C8ORF41 (TTI2) (NM_001102401) Human Tagged ORF Clone
Tag:	Myc-DDK
Symbol:	C8ORF41
Synonyms:	C8orf41; MRT39
Mammalian Cell Selection:	Neomycin
Vector:	pCMV6-Entry (PS100001)
E. coli Selection:	Kanamycin (25 ug/mL)



[View online »](#)

**ORF Nucleotide Sequence:**

>RC224713 ORF sequence  
 Red=Cloning site Blue=ORF Green=Tags(s)

TTTTGTAATACGACTCACTATAGGGCGGCCGGAATTCGTCGACTGGATCCGGTACCGAGGAGATCTGCC  
 GCC**CGCATCGCC**

ATGGAGCTTGACAGCGCTCTGGAAGCCCCATCGCAGGAAGACTCTAATTTGTCCGAGGAGTTGTCTCACT  
 CGCCTTTTGGACAGGCCCTTCTCCAAGATTTTACACTGTCTTGCCCGCCGAGGCACGACAGGCAATGT  
 AAAAGATGCAGTTCTTAAAGACCTCGGTGATCTAATAGAAGCCACAGAATTTGATAGGTTATTTAGGGG  
 ACTGGTGCACGGCTCCGCGGAATGCCGGAGACTGGGGCAGGTAGCAAAGCCCTGGAGAAGTATGCAG  
 CCCCTCCAAGGAGGAGGAAGGTGGAGGTGATGGGCACTCCGAAGCGCCGAGAAAGCAGCCCAAGTTGG  
 GTTACTGTTTCTAAACTGTTAGGAAAGTTGAGACTGCTAAGAATTCCTGGTCGGCCCTGCATGGCAG  
 ACGGGCTGCATCACTTGGCAGGACCCGTTTATATTTTTGCCATCACACAGCTTGAGCAACCATGGA  
 CCACTCCGAGATCTCGGAAGTTGCTAGGGAGGTGCTCACCTCACTGCTTCAAGTACTGAATGCGGTTT  
 TGTGGCAGGATCTACATGGAGAAAATGAAGATGAGAAAAGGAGACTTTCGGTGATACTAGGGCTTCTC  
 AAACCCGACTTGTATAAGGAATCCTGGAAGAATAACCCTGCCATCAAACATGTTTTCTCATGGACTCTGC  
 AACAGGCTCACTCGGCCCTGGCTGAGCCAGCATCTGGAAGGGTACTTCCCGCATATTGGTCATTTCAGA  
 TGAATATCAGACTGAGAACAAAATCCTGGGTGTACTGTCTCCATCACATTGTGCTTAATGTGCCAGCT  
 GCTGATTTGCTCCAGTATAACAGAGCCCAGGTCCTATACCATGCCATTTCCAACCACTGTACACACCAG  
 AGCACCACCTCATTAGGCTGTGCTCCTGTGCTGCTGGATTTATTTCCCATCTGGAGAAAACCTGCA  
 CTGGAAGGAGATGGAGCTCGACCCACCACCCATTGTGATGAGGTCTGCGGCTGATCTGACCCACATG  
 GAGCCAGAGCACCGCCTCTTTTACGCAGGACCTACGCAAGAACTGCCGGCTTTCGTGAACAGGTTGG  
 GGATCCTAACTGTCCGGCACTTAAAGAGGCTGGAGAGATCATTTGGTTATCTGGAGGTTTATGATGG  
 ACCTGAGGAGGAAGCTAGACTGAAGATATTGGAACCCTAAAACCTTCTCATGCAACATACTTGGCCAGA  
 GTTTCCTGCAGACTTGTGGTCTTACTGAAGGCCCTTGAACCTGATTTGTGATGTAGAAGGGATCCAA  
 ACCTTACACTGAGTCTGTTAAGAGCGCCCTGCTACAGGAGGCCACAGACTGCCTGATTCTCTGGACCG  
 CTGTTCTCAAGGACGGGTAAGGGTCTCTGGCCAAAATCCCCAAAGCTGTGAAGACAGAAAAGTGGTG  
 AACTATATCAGAAAAGTGCAGCAGGTTTCTGAAGGCGCACCTACAATGGAAT

**ACGCGT**ACGCGGCCGCTCGAGCAGAACTCATCTCAGAAGAGGATCTGGCAGCAAATGATATCTGGATT  
 ACAAGGATGACGACGATAAGGTTTAA

**Protein Sequence:**

>RC224713 protein sequence  
 Red=Cloning site Green=Tags(s)

MELDSALEAPSQEDSNLSEELSHSAFGQAFSKILHCLARPEARRGNVKAVALKDLGDLIEATEFDRLFEG  
 TGARLRGMPETLGQVAKALEKYAAPSKEEEGGDGHSEAAEKAAQVGLLFLKLLGKVETAKNSLVGPAWQ  
 TGLHHLAGPVYIFAITHSLEQPWTPRSREVAREVLTSLQVTECGSVAGFLHGENEDEKGRLSVILGLL  
 KPDLYKESWKNNPAIKHVFSWTLQQVTRPWLSQLERVLPAASLVISSDYQTENKILGVHCLHHIVLNVPA  
 ADLLQYNRAQVLYHAISNHLYPEHHLIQAVLLCLLDLFPILKTLHWKGDGARPTTHCDEVLRLLILTHM  
 EPEHRLRLRRTYARNLPAFVNRLGILTVRHLKRLERVIIGYLEVYDGPPEEARLKILETLKLLMQHTWPR  
 VSCRLVLLKALLKLCIDVARDPNLTPESVKSALLQEATDCLILLDRCSQGRVKLLAKIPQSCEDRKVV  
 NYIRKVVQVSEGAPYNGT

**TRTRPLEQKLI**SEEDLAANDILDYKDDDDKV

**Chromatograms:**

[https://cdn.origene.com/chromatograms/mk6529\\_h08.zip](https://cdn.origene.com/chromatograms/mk6529_h08.zip)

**Restriction Sites:**

Sgfl-Mlul

**Cloning Scheme:**


**ACCN:** NM\_001102401

**ORF Size:** 1524 bp

**OTI Disclaimer:** The molecular sequence of this clone aligns with the gene accession number as a point of reference only. However, individual transcript sequences of the same gene can differ through naturally occurring variations (e.g. polymorphisms), each with its own valid existence. This clone is substantially in agreement with the reference, but a complete review of all prevailing variants is recommended prior to use. [More info](#)

**OTI Annotation:** This clone was engineered to express the complete ORF with an expression tag. Expression varies depending on the nature of the gene.

**Components:** The ORF clone is ion-exchange column purified and shipped in a 2D barcoded Matrix tube containing 10ug of transfection-ready, dried plasmid DNA (reconstitute with 100 ul of water).

- Reconstitution Method:**
1. Centrifuge at 5,000xg for 5min.
  2. Carefully open the tube and add 100ul of sterile water to dissolve the DNA.
  3. Close the tube and incubate for 10 minutes at room temperature.
  4. Briefly vortex the tube and then do a quick spin (less than 5000xg) to concentrate the liquid at the bottom.
  5. Store the suspended plasmid at -20°C. The DNA is stable for at least one year from date of shipping when stored at -20°C.

**RefSeq:** [NM\\_001102401.4](#)

**RefSeq Size:** 2394 bp

**RefSeq ORF:** 1527 bp

**Locus ID:** 80185

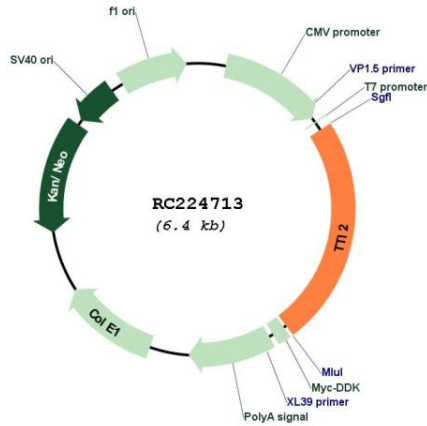
**UniProt ID:** [Q6NXR4](#)

**Cytogenetics:** 8p12

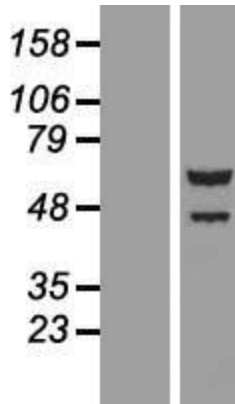
**MW:** 56.9 kDa

**Gene Summary:** This gene encodes a regulator of the DNA damage response. The protein is a component of the Triple T complex (TTT) which also includes telomere length regulation protein and Telo2 interacting protein 1. The TTT complex is involved in cellular resistance to DNA damage stresses and may act as a regulator of phosphoinositide-3-kinase-related protein kinase (PIKK) abundance. [provided by RefSeq, May 2013]

**Product images:**



Circular map for RC224713



Western blot validation of overexpression lysate (Cat# [LY420143]) using anti-DDK antibody (Cat# [TA50011-100]). Left: Cell lysates from untransfected HEK293T cells; Right: Cell lysates from HEK293T cells transfected with RC224713 using transfection reagent MegaTran 2.0 (Cat# [TT210002]).