

Product datasheet for RC224710L4

DGKG (NM_001080744) Human Tagged Lenti ORF Clone

Product data:

Product Type:	Expression Plasmids
Product Name:	DGKG (NM_001080744) Human Tagged Lenti ORF Clone
Tag:	mGFP
Symbol:	DGKG
Synonyms:	DAGK3; DGK-GAMMA
Mammalian Cell Selection:	Puromycin
Vector:	pLenti-C-mGFP-P2A-Puro (PS100093)
E. coli Selection:	Chloramphenicol (34 ug/mL)
ORF Nucleotide Sequence:	The ORF insert of this clone is exactly the same as(RC224710).
Restriction Sites:	SgfI-MluI
Cloning Scheme:	

Cloning sites used for ORF Shuttling:



* The last codon before the Stop codon of the ORF.

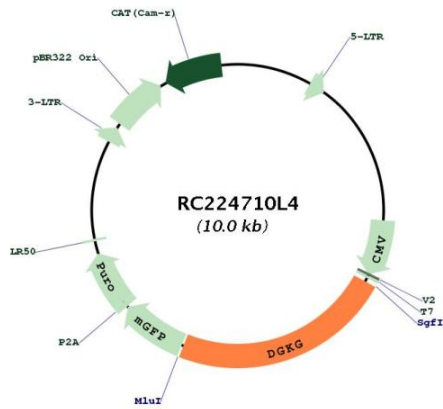
ACCN:	NM_001080744
ORF Size:	2298 bp



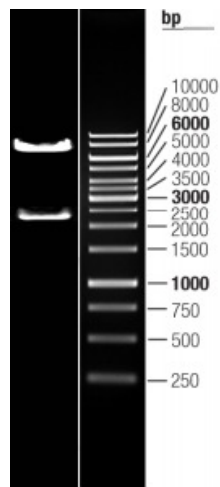
[View online »](#)

OTI Disclaimer:	The molecular sequence of this clone aligns with the gene accession number as a point of reference only. However, individual transcript sequences of the same gene can differ through naturally occurring variations (e.g. polymorphisms), each with its own valid existence. This clone is substantially in agreement with the reference, but a complete review of all prevailing variants is recommended prior to use. More info
OTI Annotation:	This clone was engineered to express the complete ORF with an expression tag. Expression varies depending on the nature of the gene.
Components:	The ORF clone is ion-exchange column purified and shipped in a 2D barcoded Matrix tube containing 10ug of transfection-ready, dried plasmid DNA (reconstitute with 100 ul of water).
Reconstitution Method:	<ol style="list-style-type: none">1. Centrifuge at 5,000xg for 5min.2. Carefully open the tube and add 100ul of sterile water to dissolve the DNA.3. Close the tube and incubate for 10 minutes at room temperature.4. Briefly vortex the tube and then do a quick spin (less than 5000xg) to concentrate the liquid at the bottom.5. Store the suspended plasmid at -20°C. The DNA is stable for at least one year from date of shipping when stored at -20°C.
RefSeq:	NM_001080744.1
RefSeq Size:	5743 bp
RefSeq ORF:	2301 bp
Locus ID:	1608
UniProt ID:	P49619
Cytogenetics:	3q27.2-q27.3
Protein Families:	Druggable Genome
Protein Pathways:	Glycerolipid metabolism, Glycerophospholipid metabolism, Metabolic pathways, Phosphatidylinositol signaling system
MW:	86.3 kDa
Gene Summary:	This gene encodes an enzyme that is a member of the type I subfamily of diacylglycerol kinases, which are involved in lipid metabolism. These enzymes generate phosphatidic acid by catalyzing the phosphorylation of diacylglycerol, a fundamental lipid second messenger that activates numerous proteins, including protein kinase C isoforms, Ras guanyl nucleotide-releasing proteins and some transient receptor potential channels. Diacylglycerol kinase gamma has been implicated in cell cycle regulation and in the negative regulation of macrophage differentiation in leukemia cells. Multiple transcript variants encoding different isoforms have been found for this gene. [provided by RefSeq, Jul 2008]

Product images:



Circular map for RC224710L4



Double digestion of RC224710L4 using SgfI and MluI