

Product datasheet for RC224704

Neurobeachin (NBEA) (NM_015678) Human Tagged ORF Clone

Product data:

Product Type:	Expression Plasmids
Product Name:	Neurobeachin (NBEA) (NM_015678) Human Tagged ORF Clone
Tag:	Myc-DDK
Symbol:	Neurobeachin
Synonyms:	BCL8B; LYST2; NEDEGE
Mammalian Cell Selection:	Neomycin
Vector:	pCMV6-Entry (PS100001)
E. coli Selection:	Kanamycin (25 ug/mL)
ORF Nucleotide Sequence:	>RC224704 representing NM_015678 Red=Cloning site Blue=ORF Green=Tags(s)

TTTTGTAATACGACTCACTATAGGGCGGCCGGAATTCGTCGACTGGATCCGGTACCGAGGAGATCTGCC
GCCCGCATCGCC

ATGGCTAGCGAGAAGCCGGGCCCGGGGCTCGAGCCTCAGCCCGTGGGGCTCATTGCCGTGGGG
CCGCTGGCGGAGGCGGGGGCAGCGGTGGTGGCGCACCGGGGCGAGCGGGATGGGGAGCTAAGGGG
GGCGTCCGGCTCCGGCTCGGTGATGCTCCCGCGGGGATGATTAACCTTCGGTCCGATCCGCAACATC
CGGATGAAATTCGAGTGTGATTGGACTCATAACAGTTCGAGAGGTGAGCAACAGGACATCGTGGAGA
CGGTGCTCAACCTGCTGGTTGGTGGAGAATTTGACTTGGAGATGAACTTTATTATCCAGGATGCTGAGAG
TATAACATGTATGACAGAGCTTTTGGAGCACTGTGATGTAAACATGTCAAGCAGAAATATGGAGCATGTTT
ACAGCCATTCTACGAAAAGTGTTCGGAATTTACAGACTAGCACAGAAAGTTGGGCTAATTGAACAAGTAT
TGCTGAAAATGAGTGCTGTAGATGACATGATAGCAGATCTTCTAGTTGATATGTTGGGGTCTTGGCCAG
CTACAGCATCACTGTCAAGGAGTTGAAGCTTTTGTTCAGCATGCTTCGAGGAGAAAGTGGAACTGGCCA
AGACATGCAGTAAAATTTATCAGTCTTAATCAGATGCCACAGAGACACGGTCTGATACTTTTTTCA
ATTTCCCTGGTTGTAGCGCTGCGCAATTGCCTTGCCCTCCTATTGCAAAGTGGCCTTATCAGAATGGCTT
CACCTTAAACACTTGGTTTCGTATGGATCCATTAATAATTAATGTTGATAAAGGATAAACCTTATCTT
TATTGTTTTCGTACTAGCAAAGGAGTTGGTTACTCTGCTCATTGTTGGCAACTGTTTAAATAGTCACAT
CATTGAAGTCCAAGGAAAAGTTTTTCAGCATTGTGTGAAATATGATTTTCAACCACGCAAGTGGTACAT
GATCAGCATTGTCCACATTTACAATCGATGGAGGAACAGTGAATTCGGTGTATGTTAATGGACAACCTG
GTATCTTATGGTGATATGGCTTGGCATGTTAACACAAATGATAGCTATGACAAGTCTTTCTTGGATCAT
CAGAAACTGCTGATGCAATAGGGTATTCTGTGGTCAACTTGGTCCCGTGTATGTGTTCAAGTGAAGCACT
CAACCCAGCACAGATATTTGCAATTCATCAGTTAGGACCTGGATATAAGAGTACCTTCAAGTTTAAATCT
GAGAGTGATATTCATTTGGCAGAACATCATAAACAGGTGTTATATGATGGGAACTTGAAGTAGCATTG
CCTTTACATATAATGCTAAGCCACTGATGCTCAGCTCTGCCTGGAATCATCACAAAAGAGAATGCATC
AATTTTTGTGCATTCCCCACATGCTCTAATGCTTCAGGATGTGAAAGCGATAGTAACACATTCATTCAT



[View online »](#)

AGTGCAATTCATTCAATTGGAGGGATTCAAGTGCTTTTTCCACTTTTTGCCCAATTGGATAATAGGCAGC
 TCAATGACAGTCAAGTGGAAACAACCTGTCTGTGCTACTCTGTTGGCATTCTGGTGAACACTTAAAAG
 TTCAGTAGCCATGCAAGAACAGATGCTGGGTGGAAAAGGCTTTTTAGTCATTGGCTACTTACTTGAAAAG
 TCATCAAGAGTTCATATAACTAGAGCTGTCTGGAGCAATTTTTATCTTTTGCAAAATACCTTGATGGTT
 TATCTCATGGAGCACCTTTGCTGAAGCAGCTTTGTGATCACATTTATTTAACCCAGCCATCTGGATACA
 TACACCTGCAAAGGTTGAGCTTTCCCTATACACATATTTGTCTGCTGAATTTATTGGAAGCTGCTACCATC
 TACACCACCATACGCAGAGTAGGAACAGTATTACAGCTAATGCACACCTAAAATATTACTACTGGGTTA
 TTAATCCTGCTGACAGTAGTGGCATTACACCTAAAGGATTAGATGGTCCCGGCCATCACAAAAAGAAAT
 TATATCACTGAGGGCATTATGCTACTTTTTCTGAAACAGCTGATACTAAAGGATCGAGGGTCAAGGAA
 GATGAACTTCAGAGTATATTAATTACCTACTTACGATGCATGAGGATGAAAATATTCATGATGTCTAC
 AGTTACTGGTGGCTTTAATGTGCGAACACCCAGCCTCAATGATACCAGCATTGATCAAAGAAATGGAAT
 AAGGGTGTACTACAAATATTGGCTTCTAAAAGTGAAAGTATTTGGGTTCAAGCTTTGAAGGTTCTGGGA
 TACTTTCTGAAGCATTAGGTCACAAGAGAAAAGTTGAAATTATGCACACCCATAGTCTTTTCACTCTTC
 TTGGAGAAAAGGCTGATGTTGCATACAAACTGTGACTGTACCACATACAACACACTTTATGAGATCTT
 GACAGAACAGTATGTAAGTCTGAGTGTACACAAACCACATCCAGAGCCAGATTCTACAGTAAAAATTCAG
 AATCCAATGATTCTTAAAGTGGTGGCAACTTTGTTAAAAAATCTACACCAAGTGCAGAGCTGATGGAA
 TTCGTCGTTTATTTTATCTGATATGATAAAACTTTTTCAGTAACAGCCGTGAAAAATAGAAGATGCTTATT
 GCAGTGTTCAGTGTGGCAGGATTGGATGTTTTCTTGGCTATATCAATCCTAAAAATCTGAGGAACAG
 AAGATTACCGAAATGGTCTACAATATCTCCGGATTCTTTGTATCATGCAATAAAATATGAATGGGGAG
 GCTGGAGAGTCTGGTGGATACCTCTCAATAGCCATTCCAAGTCACTTATGAAGTCTATAAGGAATA
 CCTAGCCAAAATGTATGAGGAATATCAAAGACAAGAGGAGGAAAACATTAAGGAAAGGAAAGGGAAT
 GTGAGCACCATCTCTGGTCTTTCATCACAGACAACAGGAGCAAAAGGTGGAATGGAATTCGAGAGATAG
 AAGACTTTTCAAAAAGCCAGAGCCAGAAAAGTGAGACCGATTACCCTGTCAGCAGACAGATCTCGAGACTT
 AACTCATGTCAACAAAAGTGTGAGATGATTTCTTGGAAATTCAGATAGACCAGGAAGTGGTGTACATGTG
 GAAGTACATGATCTTTTAGTAGATATAAAAGCAGAGAAAAGTGAAGCAACAGAAGTAAAGCTCGATGATA
 TGGATTTATCACCGAGACTTTAGTAGGTGGAGAGAATGGTGCCTTGTGGAGGTTGAATCTCTGTTGGA
 TAATGTATATAGTGTCTGTTGAGAACTCCAGAACAATGTACATGGAAGTGTGGTATCATAAAAAA
 AATGAAGAAAAGGATAATGGTCCATTGATAACATTAGCAGATGAGAAAGAAGACCTTCCCAATAGTAGTA
 CATCATTTCTCTTGTAAAATACCCAACAGGAGGAAAACTACTTCTGAACCTTCTAGCAATCACAT
 TATTCAAATATTCAGGACACACAAGTACATCTGGTGTAGTGTGATCTTGGATTGCTTGCTCACATG
 ACCGGTAGCGTAGACTTAACTTGTACATCCAGTATAATAGAAGAAAAGAATTCAAATCCATACAACCT
 CAGATGGAATGAGCAGTATTTCTGAAAGAGACTTAGCGTCATCAACTAAGGGGCTGGAGTATGCTGAAAT
 GACTGCTACAACCTGGAACCTGAGTCTTCTAGTAGCAAAATGTACCAATATTGATGCAGGAAGTATA
 ATTTAGATACTGAAAGGCTGACGATGGCAAAGAATCAGGAAAAGAAATCCGAAAAATCCAAACAACCTA
 CTACGACACAAGCTGTGCAGGGTCCGGTCTATCACCAACAAGACCCGAGATCTCCGAGTTGATTTAGGATT
 TCGAGGAATGCCAATGACTGAGGAACAGCGACGCCAGTTAGCCAGGTCACCGGACTACAATGTTTCGT
 ATTCTGAGTTTAAATGGTCTCCAATGCACCAGCGGCTTCTCACTGATTTACTATTTGCATTAGAAAAGT
 ATGTACATGTTTGGAGGAGCCATTCTACAAAGTCTGTAATGGATTTTGTCAATAGCAATGAAAATATTAT
 TTTTGTACATAACACAATTCACCTCATTCCCAAATGGTAGACAACATCATCATTGCTTGTGGAGGAAT
 TTACCTTTGCTCTGCTGCTACATCACCAACTGGTTCTAAGACGGAATTGAAAAATATTGAAGTGACAC
 AAGGCATGTCAGCTGAGACAGCAGTAACCTTCTCAGCCGGCTGATGGCTATGGTTGATGACTTGTGTT
 TGCAAGCTCTCTAAATTTAGTGAGATTGAAGCTGAGAAAAACATGTCTTCTGGAGGTTTAAATGCGACAG
 TGCCCTAAGATTAGTTTGTGTTGCTGTGAGAACTGTTTGAATGTGCGCAAAGACAGAGAGACAGGG
 GAAATAAATCTCCCATGGAAGCAGTAAACCTCAGGAAGTTCTCAAAGTGTGACTGCTACAGCAGCTTC
 GAAGACTCCATTGAAAAATGTTCCAGGTAACCTTCTCCTATTAAGGATCCGGATAGACTTCTCAGGAT
 GTTGATATCAATCGCTTCGTGCTGTTGCTTTTCGGGATGTGGATGATAGCAAACAAGCACAGTTCTTAG
 CTCTGGCTGTTGTTACTTCATTTCCGGTCTGATGGTTTCCAAGTATCGTGACATATTAGAACCCAGAG
 AGAGACTACAAGAACTGGAAGCCAACCAGGTAGAAACATCAGGCAAGAAATAAATTCACCAACAAGTACA
 GTTGTGGTCATACCATCTATCCCTCATCAAGTTTGAACCATGGATTCTTGCCAAGTAAATTCCTGAGC
 AGAGCTTTGGCCACTCATTTTACAAAGAAACACCTGCTGCATTTCCAGACACCATAAAAGAAAAAGAAAC
 ACCAACTCCTGGTGAAGATATTCAGGTAGAAAAGTTCAATCCCATACAGATTGAGGAATGGAGAGGAG
 CAAGTGGCTAGCATCCTGAATGGGGCAGAATTAGAAACAAGTACAGGCCCTGATGCCATGAGTGAACCT

TATCCACTTTGTCATCCGAAGTGAAGAAATCACAAAGAGAGCTTAACTGAAAATCCTAGTGAACGTTGAA
 GCCTGCAACATCCATATCTAGCATTAGTCAAACCAAAGGCATCAATGTGAAGGAAATACTGAAAAGTCTT
 GTGGCTGCTCCAGTTGAAATAGCAGAAATGTGGCCCTGAACCTATCCCATACCCAGATCCAGCATTGAAGA
 GAGAAACACAAGCTATTCTTCTATGCAGTTTCATTCTTTGACAGGAGTGTGTGGTGCCTGTAAGAA
 ACCACCTCCAGGTAGTTTAGCTGTAACCACTGTGGGAGCCACTACTGCTGGAAGTGGGCTGCCAACAGGC
 AGTACCTCTAATATATTGCTGCTACTGGAGCTACACAAAAAGTATGATTAATACAACAGGTGCCGTGG
 ATTCAGGGTCT
 TGTACAAAAGTGTGCTCCAATGCCAGAAGATTCAGCTGAAAATATGAGCATCACTGCAAAAAGTGAAGA
 GCGTTAGAAAAAGTTGCT
 TTCTTGCCAGTCATGGACAAGAGCTATTGATAGAAGGCCTTGTGTGATGAAGTCCAGCACATCTGTGGT
 TGAGCTTGTTATGCTGCTTTGTTCTCAGGAATGGCAAACTCTATTGAGAAGATGCAGGACTTGCAATTT
 ATTGAGCTCATCAATGAAGGAAGATTACTGTGCCATGCTATGAAGGACCATATAGTCCGTGTTGCAAAATG
 AAGCTGAGTTTATTTTGAACAGACAAAGAGCCGAGGATGTACATAAACATGCAGAGTTTGAGTACAGTG
 TGCCCAATATGCTGCTGATAGAAGAGAGGAAGAAAAGATGTGTGACCATCTTATCAGTGTCTAAACAT
 CGAGATCATGTAAACAGCAATCAGCTGAAACAGAAGATTCTCAATATTCTCACAATAAACATGGTGCTT
 GGGGAGCAGTTTCTCATAGCCAATTGCATGATTTCTGGCCTTTGGATTACTGGGAAGATGATCTTCGTCTG
 AAGGAGACGATTTGTTCCGAATGCATTTGGCTCCACTCATGCTGAAGCATTGCTGAAAGTGCATAGAA
 TATGGCACGGAAGAAGATGTAGTAAAGTCAAAGAAAACATTCAGAAGTCAAGCAATAGTGAACAAAATG
 CAGAGACAGAACTTATGCTGGAAGGAGACGATGATGCAGTCAGTCTGCTACAGGAGAAAGAAATTGACAA
 CCTTGCCAGGCCAGTGGTTCTCAGCACCCCTGCCAGCTCATCGCTCCCGTGGTGGTGGCCAAGGGGACT
 CTCTCCATCACCACGACAGAAAATCTACTTCGAGGTAGATGAGGATGATTTGCTTCAAGAAGATCGACA
 CGAAAGTTCTTGCATACACTGAGGGACTTCACGAAAAATGGATGTTGAGGAGATACGAGCTGTATTTTC
 AAGAGCTTACCTTCTACAAAACACTGCTTTGGAAGTATTTATGGCAAAACCGAACCTCAGTTATGTTAAT
 TTCCCTGATCAAGCAACAGTAAAAAAGTTGCTATAGCTTGCCTCGGGTTGGAGTAGGGACCAGCTATG
 GTCTGCCACAAGCCAGGAGGATATCATTGGCCACTCTCGACAGCTTTATAAATCTTCCAATATGACTCA
 GCGCTGGCAAAGAAGGAAATTTCAAACCTCGAATATTTGATGTTCTTAATACTATTGCAGGACGGACA
 TATAATGATCTGAACCAATATCCAGTGTTCCTGGTGTAAACCAACTATGAATCAGAAGAGTTGGACC
 TGACTCTCCAGGAACTTCCAGGATCTATCAAAGCCAATTGGTGTGTTGAACCCCAAGAGAGCTGTGTT
 TTATGCAGAGCGTTATGAGACATGGGAAGATGATCAAAGCCACCCTACCATTATAATACCATTATTCA
 ACAGCAACATCTACTTTATCCTGGCTTGTTCGAATTGAACCTTTCACAACCTTCTCTCAATGCAAAATG
 ATGAAAAATTTGATCATCCAGATCGAACCTTCTCATCCGTTGCAAGGCTTGGAGAACTAGTCAGAGAGA
 TACTTCTGATGTAAGGAACTAATTCCAGAGTTCTACTACCTACCAGAGATGTTTGTCAACAGTAATGGA
 TATAATCTTGAGTCAAGAAAGTGAAGTGTGTTAAATGATGTTGATCTTCCCCCTTGGGCAAAAAAAC
 CTGAAGACTTTGTGCGGATCAACAGGATGGCCCTAGAAAAGTGAATTTGTTTCTTGCCAACCTTCATCAGTG
 GATCGACCTTATATTTGGCTATAAGCAGCGAGGACCAGAAGCAGTTTCGTGCTCTGAATGTTTTCTACTAC
 TTGACTTATGAAGGCTCTGTGAACCTGGATAGTATCACTGATCCTGTGCTCAGGGAGGCCATGGAGGCAC
 AGATACAGAACTTTGGACAGACGCCATCTCAGTTGCTTATTGAGCCACATCCGCCTCGGAGCTCTGCCAT
 GCACCTGTGTTTCTTCCACAGAGTCCGCTCATGTTTAAAGATCAGATGCAACAGGATGTGATAATGGTG
 CTGAAGTTTCTTCAAATCTCCAGTAACCCATGTGGCAGCCAACACTCTGCCCACTTGACCATCCCCG
 CAGTGGTGACAGTGACTTGCAGCCGACTCTTGCAGTGAATAGATGGCACAACACAGTAGGCCCTCAGAGG
 AGCTCCAGGATACTCCTTGGATCAAGCCACCATCTTCCATTGAAATGGATCCATTAATAGCCAATAAT
 TCAGGTGTAACAAACGGCAGATCACAGACCTCGTTGACCAGAGTATACAAATCAATGCACATTGTTTTG
 TGGTAACAGCAGATAATCGCTATATTCTTATCTGTGGATTCTGGGATAAGAGCTTCAAGTTTATTCTAC
 AGAAACAGGGAAATTGACTCAGATTGATTTGGCCATTGGGATGTGGTCACTTGTGTTGGCCAGTCCGAG
 TCATACATTGGTGGGACTGCTACATCGTGTCCGGATCTCGAGATGCCACCCTGCTGCTCTGGTACTGGA
 GTGGGCGGCACCATATCATAGGAGACAACCCTAACAGCAGTGACTATCCGGCACCAAGAGCCGCTCTCAC
 AGGCCATGACCATGAAGTTGTCTGTGTTCTGTCTGTGCAGAACTGGGCTTGTATCAGTGGTGCTAAA
 GAGGGCCCTTGCCTTGTCCACACCATCACTGGAGATTTGCTGAGAGCCCTTGAAGGACCAGAAAAGTGTCT
 TATTTCCACGCTTATATCTGTCTCCAGCGAAGGCCACTGTATCATATACTATGAACGAGGGCGATTTCAG
 TAATTTGACGATTAATGGGAACTTTTGGCTCAAATGGAGATCAATGATTCAACACGGGCCATTCTCCTG
 AGCAGTGACGGCCAGAACCTGGTCACCGGAGGGGACAAATGGGGTGTAGAGGTCTGGCAGGCCTGTGACT
 TCAAGCAACTGTACATTTACCCTGGATGTGATGCTGGCATTAGAGCAATGGACTTGTCCCATGACCAGAG

GACTCTGATCACTGGCATGGCTTCTGGTAGCATTGTAGCTTTTAATATAGATTTTAATCGGTGGCATTAT
GAGCATCAGAACAGATAC

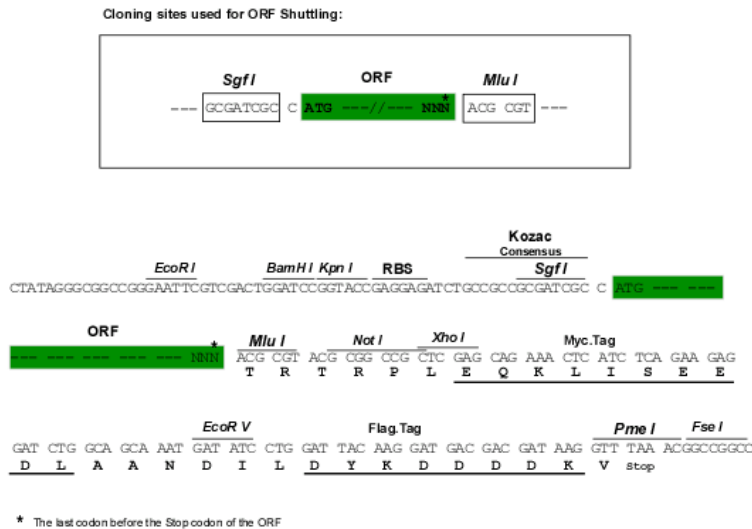
ACGCGTACGCGGCCGCTCGAGCAGAACTCATCTCAGAAGAGGATCTGGCAGCAAATGATATCCTGGATT
ACAAGGATGACGACGATAAGGTTAA

Protein Sequence: >RC224704 representing NM_015678
 Red=Cloning site Green=Tags(s)

MASEKPGPGPLEPQPVGLI AVGAAGGGGGGGGGTGGSGMGELRGASGSGSVMLPAGMINPSVPIRNI
 RMKFAVL IGLIQVGEVSNRDIVETVLLNLLVGGFEFLEMNFIIQDAESITCMTELLEHC DVTCQAEIWSMF
 TAILRKSVRNLQTSTEVGLIEQVLLKMSAVDDMIADLLVDMLGVLASYSITVKELKLLFSLMRGSGIWP
 RHAVKLLSVLNQMPQRHGPDTFFNFPGCSAAAIALPPIAKWPYQNGFTLNTWFRMDPLNNINVCYVNGQL
 YCFRTSKGVGYS AHFVGNCLIVTSLKSKGKFQHCVKYDFQPRKWMISIVHIYNRWRNSEIRCYVNGQL
 VSYGDMAHVNTNDSYDKCFLGSGSETADANRVFCGQLGAVYVFSEALNPAQIFAIHQLGPGYKSTFKFKS
 ESDIHLAEHHKQVLYDGLASSIAFTYNAKATDAQLCLESSPENASIFVHSPHALMLQDVKAIVTHSHI
 SAHISIGGIQVLFPLFAQLDNRQLNDSQVETTVCATLLAFLVELLKSSVAMQEQMLGGKGLFVIGYLLEK
 SSRVHITRAVLEQFLSFAKYLDGLSHGAPLLKQLCDHILFNPAIWIHTPAKVQLSLTYTLSAEFIGTATI
 YTTIRRVTGLQMLMHTLKYVWV INPADSSGITPKGLDGRPRSQKEIISLRAFMLLFLKQLILKDRGVKE
 DELQSI LNYLLTMHEDENIHDVLQLLVALMSEHPASMIPAFDQRNGIRVIYKLLASKSESIIWVQALKVLG
 YFLKHLGHKRKVEIMHTSLFTLLGERLMLHTNTVTVTYNTLYEILTEQVCTQVVKHPPEPDSTVKIQ
 NPMILKVVATLLKNSTPSAELMEVRRFLSDMIKLF SNSRENRRCLLQCSVWQDWMFSLGYINPKNSEEQ
 KITEMVYNI FRILLYHAIKYEWGGRVWVDTLSIAHSKVTYEAHKEYLAKMYEEYQRQEEENIKKGGKGN
 VSTISGLSSQTTGAKGGMEIREIEDLSQSQSPSESETDYPVSTDRDMLMSTKVSDDILGNDRPGSGVHV
 EVHDLLVDIKAEKVEATEVKLDDMDLSPETLVGGENGALVEVESLLDNVYSAAVEKLNQNVHGSVGIKK
 NEEKDNGPLITL ADEKEDLPNSSTSF LDKIPKQEEKLPELSSNHIIPNIQDTQVHLGVSDDLGLLAHM
 TGSVDL TCTSSIEEKEFKIHTSDGMSSI SERDLASSTKGLYEAEMTATLETESSSKIVPNIDAGSI
 ISDTERSDDGKESGKEIRKIQT TTTTQAVQGRSITQQRDLRVDL GFRGMPMTEEQRQFSPGPRITMFR
 IPEFKWSPMHQRLLTDLLFALETDVHVWRSHSTKSVMDFVNSNENIIFVHNTIHLISQMVDSIIACGGI
 LPLL SAATSPTGSKTELENI EVTQGM SAETA VTFLSRLMAMVDVLFASLNFSEIEAEKNMSSGGLMRQ
 CLR LVCCAVRNCL ECRQRDRGNKSSHGSSKQEVQSVTATAASKTPLENVPGNLSPIKDPDRLLQD
 VDINRLRAVVRD VDDSKQAQFLALAVVYFISVLMVSKYRDILEPQRETTRTGSQPGRNIRQEINSPTST
 VVVIPSIPHPSLNHGFLAKL IPEQSFHGFYKETAAPFPDTIKEKETPTPGEDIQVESSIPHTDSGIGEE
 QVASILNGAELETSTGPDAMSELLSTLSSEVKKSQESL TENPSETLKPATSISSISQTKGINVKEILKSL
 VAAPVEIAECGPEPIPYDPALKRETQAILPMQFHSFDRSVVVPVKKPPPGLAVTTVGATTAGSGLPTG
 STSNIFAATGATPKSMINTTGAVDSGSSSSSSSSSFVNGATSKNLP AVQT VAPMPEDSAENMSITAKLER
 ALEKVAPLLREIFVDFAPFLSRTLLGSHGQELLIEGLVCMKSSTSVVELVMLLCSQEWQNSIQKNAGLAF
 IELINEGRLLCHAMKDHIVRVANAEF ILNRQRAEDVHKHAEFESQCAQYAADRREEEKMDHLISA AKH
 RDHV TANQLKQKILNIL TNKHGAWGAVSHSQLHDFWRLDYWEDDLRRRRRFVRNAFGSTHAEALLKAAIE
 YGTEEDVVKSKTFRSQAI VNVQNAETELMLEGDDDAVSL LQEKEIDNLAGPVVLSTPAQLIAPVVVAKGT
 LSITITTEIYFEVDEDDSAFKKIDTKVLA YTEGLHGKWMFSEIRAVFSRRYLLQNTALEVFMANRTSMVFN
 FPDQATVKKVVYSLPRVGVGTSYGLPQARRISLATPRQLYKSSNMTQRWQRREISNFEYLMFLNTIAGRT
 YNDLNQYPVFPWVLTNYESEELDLTPGNFRDL SKPIGALNPKRAVFYAERYETWEDDQSPPYHYNTHYS
 TATSTLSWL VRIEPTTFFLNANDGKFDHPDRTFSSVARSWRSTQRDTSVKELIPEFYLLPEMFVNSNG
 YNLGVREDEVVNDVDLPPWAKKPEDFVRINRMALESEFVSCQLHQWIDLIFGYKQRGPEAVRALNVFHY
 LTYEGSVNLD SITDPVLRAMEAQIQNFQGTPSQLLIEPHPPRSSAMHLCFLPQSPLMFKDQMQQDVIMV
 LKFPSNSPVTHVAANTLPHL TIPAVVTVC SRLFAVNRWHNTVGLRGAPGYSLDQAHHLPIEMDPLIANN
 SGVNRQIITDLVDQSIQINAHCFVVTADNRYILICGFWDKSFVYSTETGKLTQIVFGHWDVVTCLARSE
 SYIGGDCYIVSGSRDALLLWYWSGRHHIIGDNPNSSDYPAPRAVL TGHDEHVVCVSVCAELGLVISGAK
 EGPCLVHTITGDL LRALEGPENCLFPRLISVSSEGHCI IYERGRFSNFSINGKLLAQMEINDSTRAILL
 SSDGQNLVTGGDNGVVEVWQACDFKQLYIYPGCDAGIRAMDLSHDQRTLITGMASGSIVAFNIDFNRWYH
 EHQNRY

TRTRPLEQKLI SEEDLAANDILDYKDDDDKV

Restriction Sites: SgfI-MluI

Cloning Scheme:


ACCN: NM_015678

ORF Size: 8838 bp

OTI Disclaimer: Due to the inherent nature of this plasmid, standard methods to replicate additional amounts of DNA in E. coli are highly likely to result in mutations and/or rearrangements. Therefore, OriGene does not guarantee the capability to replicate this plasmid DNA. Additional amounts of DNA can be purchased from OriGene with batch-specific, full-sequence verification at a reduced cost. Please contact our customer care team at custsupport@origene.com or by calling 301.340.3188 option 3 for pricing and delivery.

The molecular sequence of this clone aligns with the gene accession number as a point of reference only. However, individual transcript sequences of the same gene can differ through naturally occurring variations (e.g. polymorphisms), each with its own valid existence. This clone is substantially in agreement with the reference, but a complete review of all prevailing variants is recommended prior to use. [More info](#)

OTI Annotation: This clone was engineered to express the complete ORF with an expression tag. Expression varies depending on the nature of the gene.

Components: The ORF clone is ion-exchange column purified and shipped in a 2D barcoded Matrix tube containing 10ug of transfection-ready, dried plasmid DNA (reconstitute with 100 ul of water).

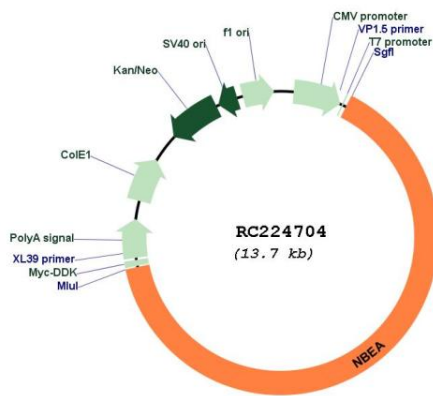
- Reconstitution Method:**
1. Centrifuge at 5,000xg for 5min.
 2. Carefully open the tube and add 100ul of sterile water to dissolve the DNA.
 3. Close the tube and incubate for 10 minutes at room temperature.
 4. Briefly vortex the tube and then do a quick spin (less than 5000xg) to concentrate the liquid at the bottom.
 5. Store the suspended plasmid at -20°C. The DNA is stable for at least one year from date of shipping when stored at -20°C.

RefSeq: [NM_015678.5](#)

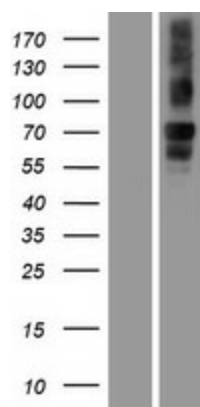
RefSeq Size: 10812 bp
RefSeq ORF: 8841 bp
Locus ID: 26960
UniProt ID: [Q8NFP9](#)
Cytogenetics: 13q13.3
Domains: Beach, WD40
MW: 327.6 kDa

Gene Summary: This gene encodes a member of a large, diverse group of A-kinase anchor proteins that target the activity of protein kinase A to specific subcellular sites by binding to its type II regulatory subunits. Brain-specific expression and coat protein-like membrane recruitment of a highly similar protein in mouse suggest an involvement in neuronal post-Golgi membrane traffic. Mutations in this gene may be associated with a form of autism. This gene and its expression are frequently disrupted in patients with multiple myeloma. Alternative splicing results in multiple transcript variants encoding distinct isoforms. Additional transcript variants may exist, but their full-length nature has not been determined.[provided by RefSeq, Feb 2011]

Product images:



Circular map for RC224704



Western blot validation of overexpression lysate (Cat# [LY414407]) using anti-DDK antibody (Cat# [TA50011-100]). Left: Cell lysates from untransfected HEK293T cells; Right: Cell lysates from HEK293T cells transfected with RC224704 using transfection reagent MegaTran 2.0 (Cat# [TT210002]).