

Product datasheet for **RC224700**

PDZD4 (NM_032512) Human Tagged ORF Clone

Product data:

Product Type:	Expression Plasmids
Product Name:	PDZD4 (NM_032512) Human Tagged ORF Clone
Tag:	Myc-DDK
Symbol:	PDZD4
Synonyms:	LNK5; LU1; PDZK4; PDZRN4L
Mammalian Cell Selection:	Neomycin
Vector:	pCMV6-Entry (PS100001)
E. coli Selection:	Kanamycin (25 ug/mL)



[View online »](#)

ORF Nucleotide
Sequence:

>RC224700 representing NM_032512
Red=Cloning site Blue=ORF Green=Tags(s)

TTTTGTAATACGACTCACTATAGGGCGGCCGGGAATTCGTCGACTGGATCCGGTACCGAGGAGATCTGCC
GCC**CGGATCGCC**

ATGGGATGTAATATGTGCGTGGTCCAGAAACCGGAGGAGCAGTACAAAGTATGCTGCAGGTGAACGGGA
AGGAGCTCTCAAGCTGTCTCAGGAGCAAACCTCGCAGGCCCTGCGCTCCTCCAAGGAGCCCTGGTGAT
CCAGGTGCTGAGACGCAGCCCCCGCTCCGGGGGACAGCTCCTGTACGACCTGCAGCTGGTGGACAGT
GGCACTCAGACCGACATCACCTTCGAGCATATCATGGCGCTGGGCAAGCTGCGTCCGCCACCCCGCCCA
TGGTCATCCTGGAGCCCCCAATCAGCCATGAGTATTATGACCCGGCGGAGTTTATGGAGGGCGGCC
GCAGGAGGCAGACCGCTTGGATGAGCTGGAGTATGAGGAGGTGGAGCTGTATAAAAGCAGCCACCCGGAC
AAGCTGGCCCTGATGGTTTGTACCGCACGGACGACGAGGAGGACCTGGGCATTTATGTCGGAGAGGTAA
ATCCCAACAGCATTGCAGCCAAAGACGGCCGGATCCGTGAGGGAGACCGCATCATCCAGATTAACGGTGT
AGAGCTCCAGAACCGGAAGAGGCGGTGGCCATCCTGAGCCAGGAAGAGAACACCAACATCTCCCTGCTG
GTGGCCCGACCTGAGAGTCAGCTGGCGAAAAGGTGGAAGGACAGCGACCCGGATGACTTCCTGGATGACT
TTGGCTCTGAGAATGAGGGGGAGCTGCGTGCTCGTAAACTGAAATCACCCCTGCCAGCAGCCCGGAAA
CGAAGAGGAGAAGGGGGCTCCCGATGCCGGCCAGGCCTGAGCAACAGCCAGGAGCTGGACAGCGGGGTG
GGCCGGACTGACGAGAGCACCCGGAACGAAGAGAGCTCTGAGCACGACCTGCTGGGGACGAACCCCGA
GCTCCACCAACACCCCGGAAGCCTGCGCAAGTTTGGCTGCAAGGGGACGCCCTGCAGAGCCGGGACTT
CCATTTACAGATGGACTCTCTGTGGCCGAGGGGGCGGGCTGGAGGGGGCGACGTCCCGGGCTCACG
GATGAGGAGTATGAGCGTACCGTGAGCTCCTGGAGATCAAGTGCCACCTGGAGAACGGCAACAGCTGG
GCCTCCTTTCCCGGGCTCCGGAGGCAACAGCGCCCTGGACGTCAACCGCAACGAGAGCTGGGCCA
CGAGATGGCCATGCTGGAGGAGGAGCTAAGGCACCTGGAATTAAGTGCCGCAACATACTGCGGGCGCAG
AAGATGCAGCAGCTGCGTGAGCGCTGCATGAAGGCCTGGCTGCTGGAGGAGGAGCCTCTACGACCTGG
CGGCCAGCGAGCCCAAGAAGCACGAGCTGTCCGACATCTCCGAGCTGCCGAGAAGTCGGACAAGGACAG
CACCAGCGCTACAACACTGGGGAGAGCTGCCGCAGCACCCCGCTGCTTGTGGAGCCCTGCCGAGAGC
CCCCTGCGGGGGCCATGGCCGGCAACTCCAATTGAACCGACCCCTCCCGGCCCGCTGTTGCCACCC
CCGCCAAGGCAGTCTCCACCGGGGAGCCCGCCAAGTCCGGTCCCTCTCCGGGATCCTGAGGCCGG
CCGGAGGCAGCACGCGGAGGAGCGGGCCCGCAACCCCAAGACGGGTTGACCCTGGAGCGTGTGGC
CCTGAAAGCAGCCCTTACCTCTCGCGGCCACC CGGCCAGGGCCAGGAGGGCGAGCACTACCACAGCT
GGTGCAGCTGGCCCGACGCGAGGCCTGGAGGAGCTGGGCCACGGCCCTGAGCTTGGCCGGTGGCC
TCGGGTGGGCGGGTGGCGGCCGCGCCACTGAAGCACCGCGCATGGAGTGGAAAGTGAAGTGGCAGC
GACGGAACCCGCTACGTGGCCAAGCGGCCCGTGCAGATCGGCTGCTGAAAGCCCGTGCCCTGAAGATCC
GGGAGGAGCGCAGCGGTATGACGACCGACGACGACGCGGTGAGCGAGATGAAGATGGGCCGCTACTGGAG
CAAGGAGGAGCGGAAGCAGCACCTGATCCGGGCCCGTGAAGCAGCGGAAGCGGCGGAGTTTATGATGCAG
AGCCGGCTGGAGTGCCTGCGGGAGCAGCAGAATGGCGACAGCAAGCCCGAGCTCAACATCATTGCCCTGA
GCCACCGCAAAACCATGAAGAAGCGGAACAAGAAGATCCTGGACAACCTGGATCACCATCCAGGAGATGCT
GGCCACGGCGCGCTCCGCCATGGCAAGCGGGTCTACAACCTCTTCTCAGTCACCACCGTG

ACGCGTACGCGGCCGCTCGAGCAGAAACTCATCTCAGAAGAGGATCTGGCAGCAAATGATATCCTGGATT
ACAAGGATGACGACGATAAGGTTTAA

Protein Sequence: >RC224700 representing NM_032512
 Red=Cloning site Green=Tags(s)

MGCNMCVVQKPEEQYKVMLQVNGKELSKLSQEQTQLALRSSKEPLVIQVLRSPRLRGDSSCHDLQLVDS
 GTQTDITFEHIMALGKLRPPTPPMVILEPPPISHEYYDPAEFMEGGPQEADRLDELEYEEVELYKSSHRD
 KLGLMVCYRTDDEEDLGIYVGEVNPNSIAAKDGRIREGDRIIQINGVDVQNREEAVAILSQEENTNISLL
 VARPESQLAKRWKDSRDDDFLDDFGSENEGELRARKLKSPPAQQPGNEEEKGAPDAGPGLSNSQELDSGV
 GRTDESTRNEESSEHLLGDEPPSSTNTPGSLRKFGLQGDALQSRDFHFMSDLLAEGAGLGGDVPGLT
 DEEYERYELLEIKCHLENGQLGLLFPRASGGNSALDVNRNLSLGHEMAMLEELRHLEFKCRNILRAQ
 KMQQLRERCMAWLEEEESLYDLAASEPKKHELSDISELPEKSDKDSTSAYNTGESCRSTPLLVEPLPES
 PLRRAMAGNSNLNRTPPGPAVATPAKAAPPPGSPAKFRSLSRDPEAGRRQHAERGRNPKTGLTLERVG
 PESSPYLSRRHRGQGQGEHYHSCVQLAPTRGLEELGHGPLSLAGGPRVGGVAAAATEAPRMWVKVRS
 DGTRYVAKRPVRDRLKARALKIREERSGMTDDDAVSEMKGMYWSKEERKQHLIRAREQRKRREFMMQ
 SRLECLREQNGDSKPELNIIALSHRKTMKRKNKILDNWITIQEMLAHGARSADGKRVYNPLLSVTTV

TRTRPLEQKLISEEDLAANDILDYKDDDDKV

Chromatograms: https://cdn.origene.com/chromatograms/mk8045_d05.zip

Restriction Sites: SgfI-MluI

Cloning Scheme:

Cloning sites used for ORF Shuttling:



* The last codon before the Stop codon of the ORF

ACCN: NM_032512

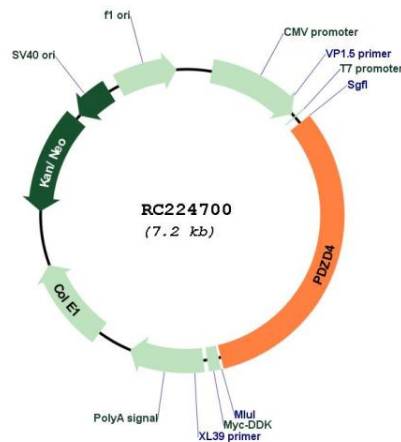
ORF Size: 2307 bp

OTI Disclaimer: The molecular sequence of this clone aligns with the gene accession number as a point of reference only. However, individual transcript sequences of the same gene can differ through naturally occurring variations (e.g. polymorphisms), each with its own valid existence. This clone is substantially in agreement with the reference, but a complete review of all prevailing variants is recommended prior to use. [More info](#)

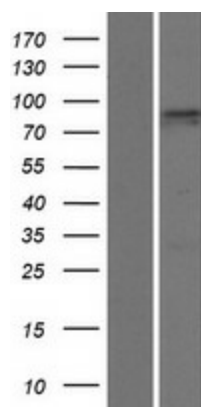
OTI Annotation: This clone was engineered to express the complete ORF with an expression tag. Expression varies depending on the nature of the gene.

Components:	The ORF clone is ion-exchange column purified and shipped in a 2D barcoded Matrix tube containing 10ug of transfection-ready, dried plasmid DNA (reconstitute with 100 ul of water).
Reconstitution Method:	<ol style="list-style-type: none"> 1. Centrifuge at 5,000xg for 5min. 2. Carefully open the tube and add 100ul of sterile water to dissolve the DNA. 3. Close the tube and incubate for 10 minutes at room temperature. 4. Briefly vortex the tube and then do a quick spin (less than 5000xg) to concentrate the liquid at the bottom. 5. Store the suspended plasmid at -20°C. The DNA is stable for at least one year from date of shipping when stored at -20°C.
RefSeq:	<u>NM_032512.5</u>
RefSeq Size:	3745 bp
RefSeq ORF:	2310 bp
Locus ID:	57595
UniProt ID:	<u>Q76G19</u>
Cytogenetics:	Xq28
MW:	86 kDa

Product images:



Circular map for RC224700



Western blot validation of overexpression lysate (Cat# [LY410087]) using anti-DDK antibody (Cat# [TA50011-100]). Left: Cell lysates from untransfected HEK293T cells; Right: Cell lysates from HEK293T cells transfected with RC224700 using transfection reagent MegaTran 2.0 (Cat# [TT210002]).