

Product datasheet for **RC224696**

Neuronatin (NNAT) (NM_181689) Human Tagged ORF Clone

Product data:

Product Type: Expression Plasmids
Product Name: Neuronatin (NNAT) (NM_181689) Human Tagged ORF Clone
Tag: Myc-DDK
Symbol: Neuronatin
Synonyms: Peg5
Mammalian Cell Selection: Neomycin
Vector: pCMV6-Entry (PS100001)
E. coli Selection: Kanamycin (25 ug/mL)
ORF Nucleotide Sequence: >RC224696 representing NM_181689
 Red=Cloning site Blue=ORF Green=Tags(s)

TTTTGTAAATACGACTCACTATAGGGCGGCCGGAATTCGTCGACTGGATCCGGTACCGAGGAGATCTGCC
 GCC**CGATCGCC**

ATGGCGGCAGTGGCGGCGCCTCGGCTGAAGTCTCATCATCGGCTGGTACATCTTCCGCGTGCTGCTGC
 AGGTGTTCAAGTACTCCCTGCAGAAGCTGGCATACACGGTGTGCGGACCGGGCGGCAGGTGTTGGGGGA
 GCGCAGGCAGCAGCCCCAAC

ACGCGTACGCGGCCGCTCGAGCAGAACTCATCTCAGAAGAGGATCTGGCAGCAAATGATATCCTGGATT
 ACAAGGATGACGACGATAAGGTTTAA

Protein Sequence: >RC224696 representing NM_181689
 Red=Cloning site Green=Tags(s)

MAAVAAASAELLIIGWYIFRVLLQVFRYSLQKLAYTVSRTGRQVLGERRQRAPN

TRTRPLE**QKL**ISEEDLAANDILDYKDDDDKV

Chromatograms: https://cdn.origene.com/chromatograms/mg4678_f01.zip

Restriction Sites: SgfI-MluI


[View online »](#)

Cloning Scheme:



ACCN: NM_181689

ORF Size: 162 bp

OTI Disclaimer: The molecular sequence of this clone aligns with the gene accession number as a point of reference only. However, individual transcript sequences of the same gene can differ through naturally occurring variations (e.g. polymorphisms), each with its own valid existence. This clone is substantially in agreement with the reference, but a complete review of all prevailing variants is recommended prior to use. [More info](#)

OTI Annotation: This clone was engineered to express the complete ORF with an expression tag. Expression varies depending on the nature of the gene.

Components: The ORF clone is ion-exchange column purified and shipped in a 2D barcoded Matrix tube containing 10ug of transfection-ready, dried plasmid DNA (reconstitute with 100 ul of water).

Reconstitution Method:

1. Centrifuge at 5,000xg for 5min.
2. Carefully open the tube and add 100ul of sterile water to dissolve the DNA.
3. Close the tube and incubate for 10 minutes at room temperature.
4. Briefly vortex the tube and then do a quick spin (less than 5000xg) to concentrate the liquid at the bottom.
5. Store the suspended plasmid at -20°C. The DNA is stable for at least one year from date of shipping when stored at -20°C.

Note: Plasmids are not sterile. For experiments where strict sterility is required, filtration with 0.22um filter is required.

RefSeq: [NM_181689.3](#)

RefSeq Size: 1257 bp

RefSeq ORF: 165 bp

Locus ID: 4826

UniProt ID: [Q16517](#)

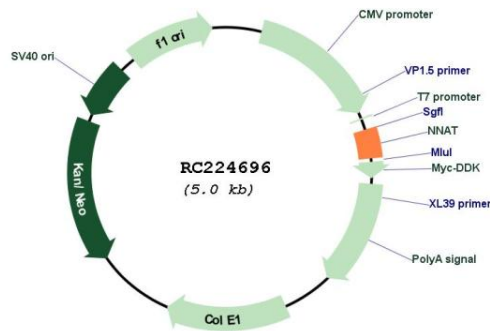
Cytogenetics: 20q11.23

Protein Families: Transmembrane

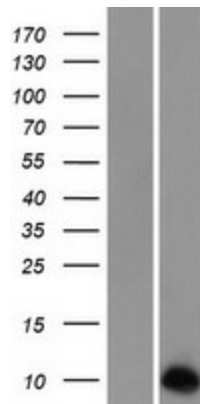
MW: 6 kDa

Gene Summary: The protein encoded by this gene is a proteolipid that may be involved in the regulation of ion channels during brain development. The encoded protein may also play a role in forming and maintaining the structure of the nervous system. This gene is found within an intron of another gene, bladder cancer associated protein, but on the opposite strand. This gene is imprinted and is expressed only from the paternal allele. [provided by RefSeq, Apr 2016]

Product images:



Circular map for RC224696



Western blot validation of overexpression lysate (Cat# [LY405671]) using anti-DDK antibody (Cat# [TA50011-100]). Left: Cell lysates from untransfected HEK293T cells; Right: Cell lysates from HEK293T cells transfected with RC224696 using transfection reagent MegaTran 2.0 (Cat# [TT210002]).