

Product datasheet for RC224691L1

FYN (NM_002037) Human Tagged Lenti ORF Clone

Product data:

Product Type:	Expression Plasmids
Product Name:	FYN (NM_002037) Human Tagged Lenti ORF Clone
Tag:	Myc-DDK
Symbol:	FYN
Synonyms:	p59-FYN; SLK; SYN
Mammalian Cell Selection:	None
Vector:	pLenti-C-Myc-DDK (PS100064)
E. coli Selection:	Chloramphenicol (34 ug/mL)
ORF Nucleotide Sequence:	The ORF insert of this clone is exactly the same as(RC224691).
Restriction Sites:	SgfI-MluI
Cloning Scheme:	

Cloning sites used for ORF Shuttling:



* The last codon before the Stop codon of the ORF.

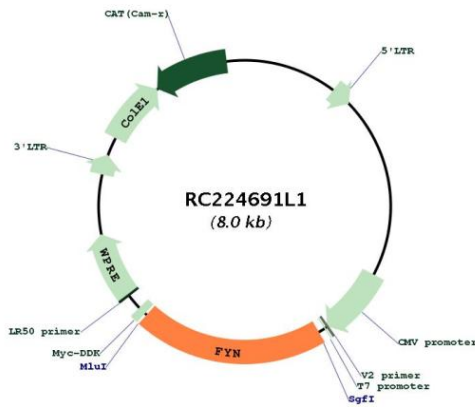
ACCN:	NM_002037
ORF Size:	1611 bp



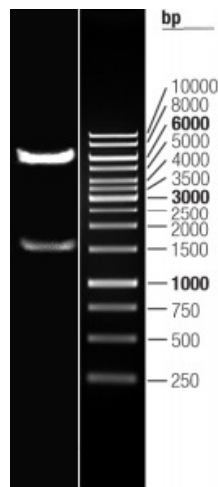
[View online »](#)

OTI Disclaimer:	The molecular sequence of this clone aligns with the gene accession number as a point of reference only. However, individual transcript sequences of the same gene can differ through naturally occurring variations (e.g. polymorphisms), each with its own valid existence. This clone is substantially in agreement with the reference, but a complete review of all prevailing variants is recommended prior to use. More info
OTI Annotation:	This clone was engineered to express the complete ORF with an expression tag. Expression varies depending on the nature of the gene.
Components:	The ORF clone is ion-exchange column purified and shipped in a 2D barcoded Matrix tube containing 10ug of transfection-ready, dried plasmid DNA (reconstitute with 100 ul of water).
Reconstitution Method:	<ol style="list-style-type: none">1. Centrifuge at 5,000xg for 5min.2. Carefully open the tube and add 100ul of sterile water to dissolve the DNA.3. Close the tube and incubate for 10 minutes at room temperature.4. Briefly vortex the tube and then do a quick spin (less than 5000xg) to concentrate the liquid at the bottom.5. Store the suspended plasmid at -20°C. The DNA is stable for at least one year from date of shipping when stored at -20°C.
RefSeq:	NM_002037.3
RefSeq Size:	2650 bp
RefSeq ORF:	1614 bp
Locus ID:	2534
UniProt ID:	P06241
Cytogenetics:	6q21
Domains:	pkinase, SH2, TyrKc, SH3, S_TKc
Protein Families:	Druggable Genome, Protein Kinase
Protein Pathways:	Adherens junction, Axon guidance, Fc epsilon RI signaling pathway, Focal adhesion, Natural killer cell mediated cytotoxicity, Pathogenic Escherichia coli infection, Prion diseases, T cell receptor signaling pathway, Viral myocarditis
MW:	60.6 kDa
Gene Summary:	This gene is a member of the protein-tyrosine kinase oncogene family. It encodes a membrane-associated tyrosine kinase that has been implicated in the control of cell growth. The protein associates with the p85 subunit of phosphatidylinositol 3-kinase and interacts with the fyn-binding protein. Alternatively spliced transcript variants encoding distinct isoforms exist. [provided by RefSeq, Jul 2008]

Product images:



Circular map for RC224691L1



Double digestion of RC224691L1 using SgfI and MluI