

Product datasheet for **RC224691**

FYN (NM_002037) Human Tagged ORF Clone

Product data:

Product Type:	Expression Plasmids
Product Name:	FYN (NM_002037) Human Tagged ORF Clone
Tag:	Myc-DDK
Symbol:	FYN
Synonyms:	p59-FYN; SLK; SYN
Mammalian Cell Selection:	Neomycin
Vector:	pCMV6-Entry (PS100001)
E. coli Selection:	Kanamycin (25 ug/mL)



[View online »](#)

ORF Nucleotide Sequence:

>RC224691 representing NM_002037
 Red=Cloning site Blue=ORF Green=Tags(s)

TTTTGTAATACGACTCACTATAGGGCGGCCGGGAATTCGTCGACTGGATCCGGTACCGAGGAGATCTGCC
 GCC**CGGATCGCC**

ATGGGCTGTGTGCAATGTAAGGATAAAGAAGCAACAAACTGACGGAGGAGAGGGACGGCAGCCTGAACC
 AGAGCTCTGGGTACCGCTATGGCACAGACCCACCCTCAGCACTACCCAGCTTCGGTGTGACCTCCAT
 CCCAACTACAACAACCTCCACGCAGCCGGGGCCAAGGACTCACCGTCTTTGGAGGTGTAACCTTTCG
 TCTCATACGGGGACCTTGCGTACGAGAGGAGAACAGGAGTGACACTCTTTGTGGCCCTTTATGACTATG
 AAGCACGGACAGAAGATGACCTGAGTTTTCAAAAGGAGAAAAATTTCAAATATTGAACAGCTCGGAAGG
 AGATTGGTGGGAAGCCCGCTCCTTGACAACTGGAGAGACAGGTTACATCCAGCAATTATGTGGCTCCA
 GTTGACTCTATCCAGGCAGAAGAGTGGTACTTTGGAAAATTGGCCGAAAAGATGCTGAGCGACAGCTAT
 TGTCTTTGGAAACCAAGAGGTACCTTTCTTATCCGCGAGAGTGAAACCACAAAGGTGCCTATCACT
 TTCTATCCGTGATTGGGATGATATGAAAGGAGACCATGTCAAACATTATAAAATTCGAAACTTGACAAT
 GGTGGATACTACATTACCACCGGGCCAGTTTGAACACTTCAGCAGCTTGACAACTTACTCAGAGA
 GAGCTGCAGGTCTCTGCTGCCGCCTAGTAGTCCCTGTCAAAAGGGATGCCAAGGCTTACCGATCTGTC
 TGTCAAAACAAAGATGTCTGGGAAATCCCTCGAGAATCCCTGCAGTTGATCAAGAGACTGGGAAATGGG
 CAGTTTGGGGAAGTATGGATGGGTACCTGGAATGGAAACACAAAAGTAGCCATAAAGACTCTAAACCAG
 GCACAATGTCCCCGAATCATTCTTGGAGAAGCGCAGATCATGAAGAAGCTGAAGCAGCACAAGCTGGT
 CCAGCTCTATGCAGTGGTGTCTGAGGAGCCCATCTACATCGTACCGAGTATATGAACAAAGGAAGTTA
 CTGGATTTCTTAAAGATGGAGAAGGAAGAGCTCTGAAATTACCAATCTTGTGGACATGGCAGCACAGG
 TGGCTGCAGGAATGGCTTACATCGAGCGCATGAATTATATCCATAGAGATCTGCGATCAGCAAACTTCT
 AGTGGGGAATGGACTCATATGCAAGATTGCTGACTTCGGATTGGCCCGATTGATAGAAGACAATGAGTAC
 ACAGCAAGACAAGGTGCAAAGTTCCCATCAAGTGGACGGCCCCGAGGCAGCCCTGTACGGGAGGTTCA
 CAATCAAGTCTGACGTGTGGTCTTTTGGAACTTACTCACAGAGCTGGTCACCAAAGGAAGGTGCCATA
 CCCAGGCATGAACAACCGGGAGGTGCTGGAGCAGGTGGAGCGAGGCTACAGGATGCCCTGCCCGCAGGAC
 TGCCCCATCTCTGATGAGCTCATGATCCACTGCTGGAAAAAGGACCCTGAAGAACGCCCCACTTTTG
 AGTACTGCAGAGCTTCTGGAAGACTACTTTACCGCGACAGAGCCCGATACCAACCTGGTGAAAACT
 G

ACGCGTACGCGGCCGCTCGAGCAGAAACTCATCTCAGAAGAGGATCTGGCAGCAAATGATATCCTGGATT
 ACAAGGATGACGACGATAAGGTTTAA

Protein Sequence:

>RC224691 representing NM_002037
 Red=Cloning site Green=Tags(s)

MGCVQCKDKEATKLTTEERDGLNQSSGYRYGTDPTPQHYPFVTSIPNYNNFHAAGGQGLTVFGGVNSS
 SHTGTLRTRGGTGVTLFVALYDYEARTEDDL SFHKGEKFQILNSSEGDWWEARSLTGTETGYIPSNYVAP
 VDSIQAEWYFGKLRKDAERQLLSFGNPRGTFI IRESETTKGAYSL SIRDWDDMKGDHVHKYKIRKLDN
 GGYIITTRAQFETLQQLVQHYSERAAGLCCRLVVPCHKGMPRLTDL SVKTKDVWEIPRESLQLIKRLGNG
 QFGEVWMTWNGNTKVAIKTLKPGTMSPEFL EEAQIMKKLKHDKLVQLYAVVSEEPYIYIVTEYMNKGS
 LDFLKDGEGRALKLPNLVDMAAQVAAGMAYIERMNYIHRDLRSANILVGNGLICKIADFLARLIEDNEY
 TARQGAKFPIKWTAPEAALYGRFTIKSDVWSFGILL TELVTKGRVPYPGMNREVLEQVERGYRMPCPQD
 CPI SLHELMIHCWKDPEERPTFEYLQSFLEDYFTATEPQYPGENL

TRTRPLEQKLI SEEDLAANDILDYKDDDDKV

Chromatograms:

https://cdn.origene.com/chromatograms/mg2611_c10.zip

Restriction Sites:

Sgfl-MluI

Cloning Scheme:


ACCN: NM_002037

ORF Size: 1611 bp

OTI Disclaimer: The molecular sequence of this clone aligns with the gene accession number as a point of reference only. However, individual transcript sequences of the same gene can differ through naturally occurring variations (e.g. polymorphisms), each with its own valid existence. This clone is substantially in agreement with the reference, but a complete review of all prevailing variants is recommended prior to use. [More info](#)

OTI Annotation: This clone was engineered to express the complete ORF with an expression tag. Expression varies depending on the nature of the gene.

Components: The ORF clone is ion-exchange column purified and shipped in a 2D barcoded Matrix tube containing 10ug of transfection-ready, dried plasmid DNA (reconstitute with 100 ul of water).

- Reconstitution Method:**
1. Centrifuge at 5,000xg for 5min.
 2. Carefully open the tube and add 100ul of sterile water to dissolve the DNA.
 3. Close the tube and incubate for 10 minutes at room temperature.
 4. Briefly vortex the tube and then do a quick spin (less than 5000xg) to concentrate the liquid at the bottom.
 5. Store the suspended plasmid at -20°C. The DNA is stable for at least one year from date of shipping when stored at -20°C.

RefSeq: [NM_002037.5](#)

RefSeq Size: 2650 bp

RefSeq ORF: 1614 bp

Locus ID: 2534

UniProt ID: [P06241](#)

Cytogenetics: 6q21

Domains: pkinase, SH2, TyrKc, SH3, S_TKc

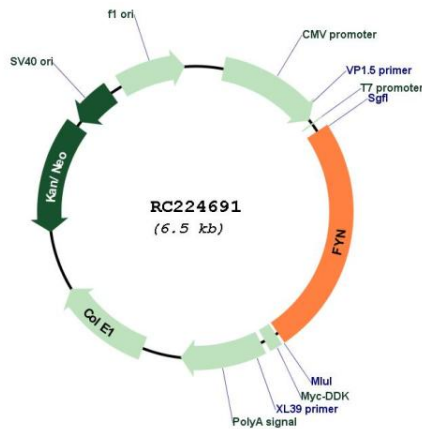
Protein Families: Druggable Genome, Protein Kinase

Protein Pathways: Adherens junction, Axon guidance, Fc epsilon RI signaling pathway, Focal adhesion, Natural killer cell mediated cytotoxicity, Pathogenic Escherichia coli infection, Prion diseases, T cell receptor signaling pathway, Viral myocarditis

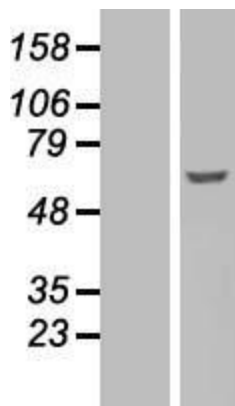
MW: 60.6 kDa

Gene Summary: This gene is a member of the protein-tyrosine kinase oncogene family. It encodes a membrane-associated tyrosine kinase that has been implicated in the control of cell growth. The protein associates with the p85 subunit of phosphatidylinositol 3-kinase and interacts with the fyn-binding protein. Alternatively spliced transcript variants encoding distinct isoforms exist. [provided by RefSeq, Jul 2008]

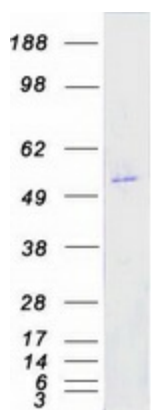
Product images:



Circular map for RC224691



Western blot validation of overexpression lysate (Cat# [LY400745]) using anti-DDK antibody (Cat# [TA50011-100]). Left: Cell lysates from untransfected HEK293T cells; Right: Cell lysates from HEK293T cells transfected with RC224691 using transfection reagent MegaTran 2.0 (Cat# [TT210002]).



Coomassie blue staining of purified FYN protein (Cat# [TP324691]). The protein was produced from HEK293T cells transfected with FYN cDNA clone (Cat# RC224691) using MegaTran 2.0 (Cat# [TT210002]).