

Product datasheet for **RC224687**

PRAMEF16 (NM_001045480) Human Tagged ORF Clone

Product data:

Product Type:	Expression Plasmids
Product Name:	PRAMEF16 (NM_001045480) Human Tagged ORF Clone
Tag:	Myc-DDK
Symbol:	PRAMEF16
Synonyms:	OTTHUMP00000002960; PRAME family member 16
Mammalian Cell Selection:	Neomycin
Vector:	pCMV6-Entry (PS100001)
E. coli Selection:	Kanamycin (25 ug/mL)



[View online »](#)

ORF Nucleotide Sequence:

>RC224687 representing NM_001045480
 Red=Cloning site Blue=ORF Green=Tags(s)

TTTTGTAATACGACTCACTATAGGGCGGCCGGAATTCGTCGACTGGATCCGGTACCGAGGAGATCTGCC
 GCC**CGGATCGCC**

ATGAGCCTCCAGTCCCCATCCAGACTCCTGGAGCTGGCAGGCCAGAGCCTGCTGAGGAACGATTCTTGA
 CCATCTTCATCCTGGACGAGCTGCCAGGGAGGCTTCCCTCTGATGTTTCATGGAGGCCTCCAGCATGAG
 ACATTTTGAGGCCTGAAGCTGATGGTGCAGGCCCTGGCCCTTCCCTCCGCCTCCCTCTGGGATCCCTGATG
 AAGACACCTCATCTGGAGACCTTGAAGCTGTGCTGAAGGGACTTGATACACTGCTGGCCAGAAGCTTC
 GCCCAGGAGGTGAAACTTCAAGTGTGGATTGCGGGATGTTGATGGGAATTTCTGGACTATATGGTC
 TGGAGCCAGGGCCCTCCTGCTCCCAGAGGCCATGAGAAAGAGGCAGACAGTGGAGGACTATCCAAGG
 ACGGGAGAGCACCAGCCCTTGAAGGTGTTTCATAGACCTTGCCAAAAGGAAAGTACTGGATGAATGCC
 TGAGCTACCTCTGCAGGTGGATCCACTACAGAAGAGTCTAGTGCACCTGTGTTGAATAAGGTGCAGAA
 TTAACAATGCCACTTCAAGTTTCAGAAATTTATTGAAAAGGGTATACCCAGACAGTATCCAGGAGTTG
 GAAATTAAGAGAAAGTGCTCTCTGAATAAACAGGAAAGTTTGCCCTTACTTGAGCCAGATGAGCAATC
 TTCGAAACTCTTTTAGCCTTCGGTTATGACGATGAGTTATATGTAAGCGGCCAACAGCAGTTCGTTCC
 TGACTTGGACTGTCCATTCCTCTGCCTGTACTACCCTCAGATGCTTTATAAAGAAAGATCAGTAATATC
 AAAGAGCACCTGGAGCACCTGCTCAGGTGCCTCAAGAACCCTTGGGAACCTTTATATTCTGTATGCTT
 ACCTAGCTGATCAGGACATGGAGTGTCTGTCTCAGTACCAAGCCTCAGTCAGCTAAAGGAGCTGCATCT
 GATTCATATCCTAATGTGGACTACCAATCTTGAGCCCTTGGAGCTCTGCTAGAGAAAGTTGCTGCTACT
 CTCGAGATCCTCAGTAAAGGACTGTCAGATCCAGGACTCCCAGCTCAGGGTCTCCTGCCTGCCCTGA
 GCCGCTGCTCCCAGCTCACCACCTTCTACTTTGCGGAAATGAGACCTCCACGAATGCTGAAAAGACT
 GCTGTGTACACAGGTGGGCTGAGCAAGTTAGGTCTGGAGTTGTATCCTGCCCTCTGGAGTGTCTTGAC
 AACAGGGTTCATGCAATTGGGAGATCCTCGCCCAATTCGGGCTGAGCTGATGTGTACTCAGGGAAG
 TCAGGCAGCCCAAGAGGATCTTTTTTGGTCCCATCCCCTGCCCTTCTGTGGCTCATGGCCATCTGAGAA
 AGTGGACTTCCATCTTTGCTCT

**ACGGTACGCGGCCGCTCGAGCAGAAACTCATCTCAGAAGAGGATCTGGCAGCAATGATATCCTGGATT
 ACAAGGATGACGACGATAAGGTTTAA**

Protein Sequence:

>RC224687 representing NM_001045480
 Red=Cloning site Green=Tags(s)

MSLQSPSRLLLELAGQSLRNQFLTIFILDELPREVFPLMFMEASSMRHFEALKLMVQAWPFLRLPLGLSM
 KTPHLETLQAVLKGLDTLLAQKLRPRRWKLVLDLRDVGDFWNIWSGARALSCSPEAMRKRQTVEDYPR
 TGEHQPLKVFIDLCQKESTLDECLSYLCRWIHYRRGLVHLCCKNVQNYSMPTSSFRNLLKRVYPDSIQEL
 EIKRKCSLNKTGKFAPYLSQMSNLRKLFALFYDDELYVSGQQFVDPDLCPFLCLYYPQMLYIRKISNI
 KEHLEHLLRCLKNPLGTFIFCHAYLADQDMECLSQYPSLSQLKELHLIHILMWTNLEPLGALLEKVAAT
 LEILTLKDCQIQDSQLRVLLPALSRCSQLTTFYFRGNETSTNALKDLLCHTGGLSKLGLLEYPAPLECLD
 NRGHVNWIEILAPIRAELMCTLREVRQPKRIFFGPIPCPSCGSPSEKVFHLC

TRTRPLEQKLISEEDLAANDILDYKDDDDKV

Chromatograms:

https://cdn.origene.com/chromatograms/ja1420_c08.zip

Restriction Sites:

Sgfl-MluI

Cloning Scheme:

Cloning sites used for ORF Shuttling:



* The last codon before the Stop codon of the ORF

ACCN: NM_001045480

ORF Size: 1422 bp

OTI Disclaimer: The molecular sequence of this clone aligns with the gene accession number as a point of reference only. However, individual transcript sequences of the same gene can differ through naturally occurring variations (e.g. polymorphisms), each with its own valid existence. This clone is substantially in agreement with the reference, but a complete review of all prevailing variants is recommended prior to use. [More info](#)

OTI Annotation: This clone was engineered to express the complete ORF with an expression tag. Expression varies depending on the nature of the gene.

Components: The ORF clone is ion-exchange column purified and shipped in a 2D barcoded Matrix tube containing 10ug of transfection-ready, dried plasmid DNA (reconstitute with 100 ul of water).

Reconstitution Method:

1. Centrifuge at 5,000xg for 5min.
2. Carefully open the tube and add 100ul of sterile water to dissolve the DNA.
3. Close the tube and incubate for 10 minutes at room temperature.
4. Briefly vortex the tube and then do a quick spin (less than 5000xg) to concentrate the liquid at the bottom.
5. Store the suspended plasmid at -20°C. The DNA is stable for at least one year from date of shipping when stored at -20°C.

RefSeq: [NM_001045480.1](#), [NP_001038945.1](#)
RefSeq Size: 1587 bp

RefSeq ORF: 1425 bp

Locus ID: 654348

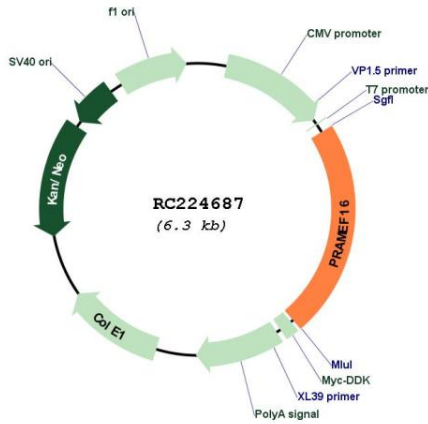
Cytogenetics: 1p36.21

MW: 54.7 kDa

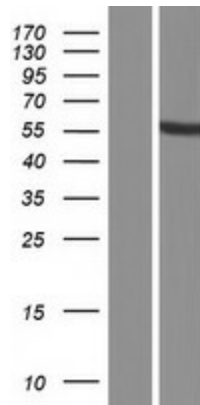
Gene Summary:

DISCONTINUED: This record has been withdrawn by NCBI and HGNC. It represents a duplicate gene copy that has been removed in the GRCh38 reference genome assembly.

Product images:



Circular map for RC224687



Western blot validation of overexpression lysate (Cat# [LY420754]) using anti-DDK antibody (Cat# [TA50011-100]). Left: Cell lysates from untransfected HEK293T cells; Right: Cell lysates from HEK293T cells transfected with RC224687 using transfection reagent MegaTran 2.0 (Cat# [TT210002]).