

## Product datasheet for RC224685

### TMEM80 (NM\_001042463) Human Tagged ORF Clone

#### Product data:

Product Type: Expression Plasmids  
 Product Name: TMEM80 (NM\_001042463) Human Tagged ORF Clone  
 Tag: Myc-DDK  
 Symbol: TMEM80  
 Mammalian Cell Selection: Neomycin  
 Vector: pCMV6-Entry (PS100001)  
 E. coli Selection: Kanamycin (25 ug/mL)  
 ORF Nucleotide Sequence: >RC224685 representing NM\_001042463  
 Red=Cloning site Blue=ORF Green=Tags(s)

TTTTGTAATACGACTCACTATAGGGCGGCCGGAATTCGTCGACTGGATCCGGTACCGAGGAGATCTGCC  
 GCC**CGATCGCC**

ATGGCCGAAGGAGCGCGAGCGCGGGCCGAGAGGCTGCCGGATCGCGACGGACCGGGCGGGGCGG  
 GTAAGATGGCGGCCCGCGGGGAGAGGATCCTCCACAGTGTCTTTCAGTTCCCTTCAAATGCT  
 GTTTTATCTCAGCGGAACGTAACGACCCCTGTATTTCTCGCCACGCTCCTGATGATCACGTATAAAGT  
 CAGGTGTTTCTAGCTATCCTCACCGCTACCTGGTCTCGATCTTCTGCTGCTGTTTCTGATGGGGATTCTAG  
 AAGCAGTTCGGTTATACCTGGGACCGGGCAACCTGACAGGCTGAGAGGCCGCTGGCCGCCAGCCT  
 GGCCCTACGGCTGGCACCGCCCTCCTCTCTGCCACTTCTGCTTTGGCAGGCCCTAGTGTGTGGGCG  
 GACTGGGCCCTCAGCGCCACGCTCCTGGCCCTCACGGCCTGGAGGCCGTCTGCAGGTGTTGCCATCG  
 CGGCCTTACCAGG

**ACGCGT**ACGCGGCCGCTCGAGCAGAACTCATCTCAGAAGAGGATCTGGCAGCAAATGATATCCTGGATT  
 ACAAGGATGACGACGATAAGGTTTAA

Protein Sequence: >RC224685 representing NM\_001042463  
 Red=Cloning site Green=Tags(s)

MAEGARARGPRGCRDRDGPAGGAGKMAAPRRGRSSTVLSVPLQMLFYLSGTYALYFLATLLMITYKS  
 QVFSYPHYRLVLDLALLFLMGILEAVRLYLGTRGNL TEAERPLAASLAL TAGTALLSAHFLWQALVLWA  
 DWALSATLLALHGLEAVLQVVAIAAFTR

**TRTRPLEQKLI**SEEDLAANDILDYKDDDDKV

Chromatograms: [https://cdn.origene.com/chromatograms/mg4493\\_d09.zip](https://cdn.origene.com/chromatograms/mg4493_d09.zip)

Restriction Sites: SgfI-MluI



[View online >](#)

**Cloning Scheme:**


**ACCN:** NM\_001042463

**ORF Size:** 504 bp

**OTI Disclaimer:** The molecular sequence of this clone aligns with the gene accession number as a point of reference only. However, individual transcript sequences of the same gene can differ through naturally occurring variations (e.g. polymorphisms), each with its own valid existence. This clone is substantially in agreement with the reference, but a complete review of all prevailing variants is recommended prior to use. [More info](#)

**OTI Annotation:** This clone was engineered to express the complete ORF with an expression tag. Expression varies depending on the nature of the gene.

**Components:** The ORF clone is ion-exchange column purified and shipped in a 2D barcoded Matrix tube containing 10ug of transfection-ready, dried plasmid DNA (reconstitute with 100 ul of water).

**Reconstitution Method:**

1. Centrifuge at 5,000xg for 5min.
2. Carefully open the tube and add 100ul of sterile water to dissolve the DNA.
3. Close the tube and incubate for 10 minutes at room temperature.
4. Briefly vortex the tube and then do a quick spin (less than 5000xg) to concentrate the liquid at the bottom.
5. Store the suspended plasmid at -20°C. The DNA is stable for at least one year from date of shipping when stored at -20°C.

**RefSeq:** [NM\\_001042463.1](#), [NP\\_001035928.1](#)

**RefSeq Size:** 1637 bp

**RefSeq ORF:** 432 bp

**Locus ID:** 283232

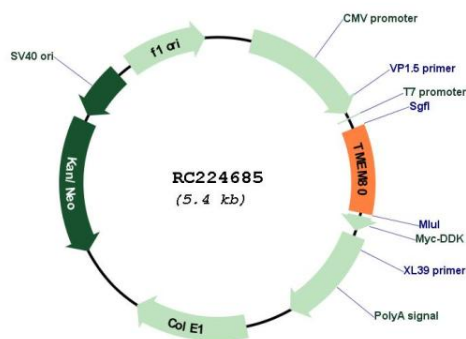
**UniProt ID:** [Q96HE8](#)

**Cytogenetics:** 11p15.5

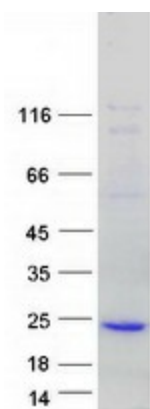
Protein Families: Transmembrane

MW: 18 kDa

**Product images:**



Circular map for RC224685



Coomassie blue staining of purified TMEM80 protein (Cat# [TP324685]). The protein was produced from HEK293T cells transfected with TMEM80 cDNA clone (Cat# RC224685) using MegaTran 2.0 (Cat# [TT210002]).