

Product datasheet for **RC224682**

CUZD1 (NM_022034) Human Tagged ORF Clone

Product data:

Product Type:	Expression Plasmids
Product Name:	CUZD1 (NM_022034) Human Tagged ORF Clone
Tag:	Myc-DDK
Symbol:	CUZD1
Synonyms:	ERG-1; ERG1; ITMAP1; UO-44
Mammalian Cell Selection:	Neomycin
Vector:	pCMV6-Entry (PS100001)
E. coli Selection:	Kanamycin (25 ug/mL)



[View online »](#)

ORF Nucleotide Sequence:

>RC224682 representing NM_022034
 Red=Cloning site Blue=ORF Green=Tags(s)

TTTTGTAATACGACTCACTATAGGGCGGCCGGAATTCGTCGACTGGATCCGGTACCGAGGAGATCTGCC
 GCC**CGGATCGCC**

ATGGAGCTTGTAAGAAGGCTCATGCCATTGACCCTCTAATTCTCTCCTGTTGGCGGAGCTGACAAATGG
 CGGAGGCTGAAGCAATGCAAGCTGCACAGTCAGTCTAGGGGTGCCAATATGGCAGAGACCCACAAAGC
 CATGATCCTGCAACTCAATCCCAGTGAGAACTGCACCTGGACAATAGAAAAGACCAGAAAAACAAAGCATC
 AGAATTATCTTTTCTATGTCCAGCTTGATCCAGATGGAAGCTGTGAAAGTGAAAACATTAAGTCTTTG
 ACGGAACCTCCAGCAATGGGCTCTGCTAGGGCAAGTCTGCAGTAAAAACGACTATGTTCTGTATTTGA
 ATCATCATCCAGTACATTGACGTTTCAAATAGTTACTGACTCAGCAAGAATTCAAAGAACTGCTTTGTCT
 TTCTACTACTTCTCTCTCCTAACATCTCTATTCCAACTGTGGCGTTACCTGGATACCTTGAAGGAT
 CCTTACCAGCCCAATTACCCAAAGCCGCATCCTGAGCTGGCTTATTGTGTGGCACATAACAAGTGA
 GAAAGATTACAAGATAAACTAACTTCAAAGAGATTTTCTAGAAATAGACAAACAGTCAAATTTGAT
 TTTCTTGCCATCTATGATGGCCCTCCACCAACTCTGGCCTGATTGGACAAGTCTGTGGCCGTGACTC
 CCACCTTCGAATCGTCATCAAACCTCTGACTGTCGTGTTGTCTACAGATTATGCCAATCTTACCGGGG
 ATTTTCTGCTTCTACACCTCAATTTATGCAGAAAACCAACTACATCTTTAACTTGCTTCTGAC
 AGGATGAGAGTTATTATAAGCAAATCCTACCTAGAGGCTTTAACTCTAATGGGAATAACTTGCAACTAA
 AAGACCAACTTGAGACCAAAATATCAAATGTTGTGGAATTTTCTGTCCCTCTAATGGATGTGGTAC
 AATCAGAAAGGTAGAAGTCAATTAACCAATATAATCACCTTTTCTGCATCCTCAACTTCT
 GAAGTGATCACCCGTGAGAACTCCAGATTATTGTGAAGTGAAATGGGACATAATTCTACAGTGG
 AGATAATATACATAACAGAAGATGATGTAATCAAAGTCAAATGCACTGGGCAAAATATAACACCGCAT
 GGCTCTTTTGAATCCAATTCATTTGAAAAGACTATACTTGAATCACCATATTATGTGGATTTGAACCAA
 ACTCTTTTGTCAAGTTAGTCTGCACCTCAGATCCAATTTGGTGGTGTCTTGTATACCTGTAGAG
 CCTCTCCACCTGACTTTGCATCTCCAACTACGACCTAATCAAGAGTGGATGTAGTCGAGATGAAAC
 TTGTAAGGTGATCCCTATTTGGACACTATGGGAGATTCCAGTTTAAATGCCTTTAAATCTTGAGAAGT
 ATGAGCTCTGTATCTGCAGTGTAAAGTTTGTATGTGATAGCAGTGACCACAGTCTCGCTGCAATC
 AAGTTGTGTCTCAGAAGCAAACGAGACATTTCTTATATAAATGGAAAACAGATTCATCATAGGACC
 CATTCTGCTGAAAAGGGATCGAAGTGAAGTGGCAATTCAGGATTCAGCATGAAACACATGCGGAAGAA
 ACTCCAAACCAGCTTTCAACAGTGTGCATCTGTTTTCCTTCATGTTCTAGCTCTGAATGTGGTACTG
 TAGCGACAATCACAGTGAGGCATTTTGAATCAACGGGCAGACTACAAATACCAGAAGTCGAGAACTA
 T

ACGCGTACGCGGCCGCTCGAGCAGAACTCATCTCAGAAGAGGATCTGGCAGCAAATGATATCCTGGATT
 ACAAGGATGACGACGATAAGGTTTAA

Protein Sequence:

>RC224682 representing NM_022034
 Red=Cloning site Green=Tags(s)

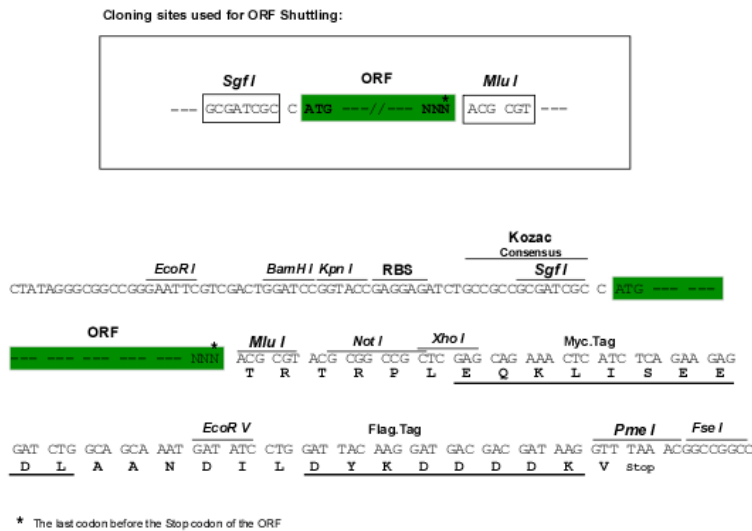
MELVRRMLPLTLLILSCLAELTMAEAGNASCTVSLGGANMAETHKAMILQLNPSENCTWTIERPENKSI
 RIIFSYYQLDPDGSCSENIKVFDTSSNGPLLQVCSKNDYVPVFESSSTLTFQIVTDSARIQRTVFV
 FYYFFSPNISIPNCGGYLDTLEGSFTSPNYPKHPPELAYCVWHIQVEKDYKIKLNFKEIFLEIDKQCKFD
 FLAIYDGPSTNSGLIGQVGRVPTFESSNSLTVVLSTDYANSYRGFSASYTSIYAENINTTSLTCSSD
 RMRVVIISKSYLEAFNSNGNLLQLKDPTCRPKLSNVVEFSVPLNGCGTIRKVEDQSITYTNIITFSASSTS
 EVITRQQLQIIVKCEMGNSTVEIYITEDDVIQSQUALGKYNTSMALFESNSFEKTILESPYYVDLNQ
 TLFVQVSLHTSDPNLVVFLDTCRASPTSDFASPTYDLIKSGCSRDETCKVYPLFGHYGRFQFNAFKFLRS
 MSSVYLQCKVLCIDSSDHQSRCNQGCVSRSKRDISSYKWKTDIIIGPIRLKRDRSASGNSGFQHETHAE
 TPNQPFNSVHLFSFMVLALNVVTVAITVRHFVNQRADYKYQLQNY

TRTRPLEQKLISEEDLAANDILDYKDDDDKV

Chromatograms: https://cdn.origene.com/chromatograms/mg5132_b09.zip

Restriction Sites: SgfI-MluI

Cloning Scheme:



ACCN: NM_022034

ORF Size: 1821 bp

OTI Disclaimer: The molecular sequence of this clone aligns with the gene accession number as a point of reference only. However, individual transcript sequences of the same gene can differ through naturally occurring variations (e.g. polymorphisms), each with its own valid existence. This clone is substantially in agreement with the reference, but a complete review of all prevailing variants is recommended prior to use. [More info](#)

OTI Annotation: This clone was engineered to express the complete ORF with an expression tag. Expression varies depending on the nature of the gene.

Components: The ORF clone is ion-exchange column purified and shipped in a 2D barcoded Matrix tube containing 10ug of transfection-ready, dried plasmid DNA (reconstitute with 100 ul of water).

Reconstitution Method:

1. Centrifuge at 5,000xg for 5min.
2. Carefully open the tube and add 100ul of sterile water to dissolve the DNA.
3. Close the tube and incubate for 10 minutes at room temperature.
4. Briefly vortex the tube and then do a quick spin (less than 5000xg) to concentrate the liquid at the bottom.
5. Store the suspended plasmid at -20°C. The DNA is stable for at least one year from date of shipping when stored at -20°C.

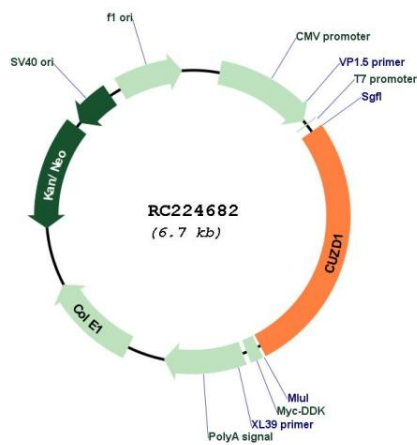
RefSeq: [NM_022034.6](#)

RefSeq Size: 2917 bp

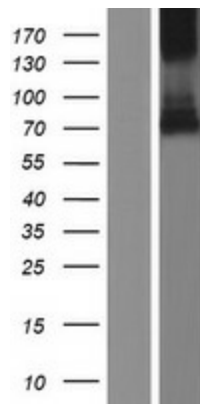
RefSeq ORF: 1824 bp

Locus ID: 50624
UniProt ID: [Q86UP6](#)
Cytogenetics: 10q26.13
Domains: zona_pellucida
Protein Families: Transmembrane
MW: 68 kDa
Gene Summary: CUZD1 antiserum inhibits cell attachment and proliferation of ovarian cancer cells so may be involved in these processes. May also play a role in the uterus during late pregnancy and/or in trypsin activation in pancreatic acinar cells.[UniProtKB/Swiss-Prot Function]

Product images:



Circular map for RC224682



Western blot validation of overexpression lysate (Cat# [LY411844]) using anti-DDK antibody (Cat# [TA50011-100]). Left: Cell lysates from untransfected HEK293T cells; Right: Cell lysates from HEK293T cells transfected with RC224682 using transfection reagent MegaTran 2.0 (Cat# [TT210002]).