

## Product datasheet for **RC224677**

### **ILF1 (FOXK2) (NM\_004514) Human Tagged ORF Clone**

#### **Product data:**

Product Type:	Expression Plasmids
Product Name:	ILF1 (FOXK2) (NM_004514) Human Tagged ORF Clone
Tag:	Myc-DDK
Symbol:	ILF1
Synonyms:	ILF; ILF-1; ILF1; nGTBP
Mammalian Cell Selection:	Neomycin
Vector:	pCMV6-Entry (PS100001)
E. coli Selection:	Kanamycin (25 ug/mL)



[View online »](#)

**ORF Nucleotide Sequence:**

>RC224677 representing NM\_004514  
 Red=Cloning site Blue=ORF Green=Tags(s)

TTTTGTAATACGACTCACTATAGGGCGGCCGGAATTCGTCGACTGGATCCGGTACCGAGGAGATCTGCC  
 GCC**GCGATCGCC**

ATGGCGGGCGCCGCGCGCGCTCTCGGGCGGGCACGCCACCCGGGGCGGGGGCCGGGGCGGGCG  
 GGGCCGGGGCGGCGGGTCCCGCCGGGCGGCTGGGCCGTGGCGGCCTGGAGGGCCGCGAGTTCGAGTA  
 TCTGATGAAGAAGCGCTCGGTGACCATCGGCCGCAACTCGTCGCAGGGCTCGGTGGACGTGAGCATGGGC  
 CACTCGAGCTTCACTCCCGGCGCCACCTCGAGATCTTACGCCCCCGGGCGGGCGGCCATGGCGGGG  
 CCGCTCCGGAGCTGCCGCCCGCGCAGCCAGGCCGACGCCGGCGGACTTCTACCTGCGCTGCTTGGG  
 CAAGAACGGGTATTCTGGACGGCGTGTCCAGAGGCGGGGGCGGCCGCTGCAGCTGCCGCGCGTG  
 TGCACATTCAGGTTCCCGAGCACAACATCAAGATAACGTTCACTGCCCTGTCCAGCGAGAAGAGAGAGA  
 AGCAGGAGGCGTCTGAGTCTCCAGTGAAGGCCGTACAGCCACACATCTCGCCCTGACCATCAACATTCC  
 AGACACCATGGCCACCTCATCAGCCCTCTGCCCTCCCCACGGGAACCATCAGCGCTGCAAACCTCTGC  
 CCCTCCAGCCCCGGGGAGCGGGTCTTCAAGGTACAAGGTGGGCGGAGTGATGCCATCTGACCTCAATT  
 TAATGGCTGACAACTCACAGCCTGAAAATGAAAAGGAAGCTTCAGGTGGAGACAGCCGAAGGATGATTC  
 AAAGCCGCTTACTCCTACGCGCAGCTGATAGTTCAGGCGATTACGATGGCTCCCGACAAACAGCTCACC  
 CTGAACGGGATTTATACACATCACTAAAAATTATCCCTACTACAGGACTGCGGACAAGGGCTGGCAGA  
 ATTCAATTCGCCACAATCTCTCTGAATCGTTATTTTCATCAAAGTGCCGCGTCCCAGGAAGAACCAGG  
 CAAAGGCTCGTTCTGGAGGATAGACCCAGCCTCTGAAAGCAAATTAATAGAACAGGCTTTTAGGAAACGA  
 CGGCTAGGGGCGTGCCCTGCTTTAGAACCCTCTGGGACCGCTCTTCTAGGAGTGCCCCAGCCTCTC  
 CCAATCACGCGGGAGTGCTGTCTGCTCACTCTAGTGGCGCCAGACCCCTGAGAGCCTGTGAGGGGAAG  
 TTCGCCGGCCCCCTGGAGCCTGAGCCTGGCGCTGCACAGCCCAAACCTCGCTGTATCCAGGAAGCCCGG  
 TTTGCCAGAGCGCCCCAGGTCACCTCTGTCCAGTCAGCCAGTCTTAATCACCGTCCAGCGGCAGCTAC  
 CACAGGCCATCAAGCCTGTACCTACACTGTGGCCACCCAGTGACCACCTCGACCTCCAGCCACCCGT  
 CGTGCAGACGGTTCACGTCGTCCACCAGATCCCAGCGGTGTGGTACCAGTGTGGCCGGACTGGCCCCA  
 GCGAACACGTACACTGTCTCTGGACAAGCTGTGGTCAACCCGGCAGCCGTGCTGGCCCTCTAAGGCAG  
 AGGCCAGGAGAATGGAGACCACAGGGAAGTCAAAGTCAAAGTAGAGCCTATTCCCGCCATTGGCCACGC  
 CACGCTCGGCACTGCCAGCCGGATCATTACAGCGGCACAGACCACCCGGTCCAGACGGTGACCATAGTA  
 CAACAGGCACCTCTAGGTCAACACCAGTACCAATAAAAACGTAAACACAAAACGGCACTCACGTGGCAT  
 CAGTCCCCACTGCGGTCCAGGCCAGGTGAACAATGCCGCGGCGAGTCCCTTGCACATGTTGGCAACACA  
 CGCATCCGCATCGGCTCCCTGCCACAAAGCGCCACAACGGTGACCAGCCGGAGCAGCCGGAGCTGAAG  
 CGGATCAAGACAGAAGACGGCGAGGGCATCGTCATTGCCCTGAGCGTGGACACGCCACCCGGCAGCCGTAA  
 GGGAAAAGGGTGTCCAGAAC

**ACGCGT**ACGCGGGCCGCTCGAGCAGAACTCATCTCAGAAGAGGATCTGGCAGCAAATGATATCCTGGATT  
 ACAAGGATGACGACGATAAGGTTTAA

**Protein Sequence:** >RC224677 representing NM\_004514  
Red=Cloning site Green=Tags(s)

```

MAAAAAALSGAGTPPAGGGAGGGGAGGGGSPGGWAVARLEGREFEYLMKKRSVTIGRNSSQGSVDVSMG
HSSFISRRHLEIFTPPGGGGHGGAAPELPPAQPRPDAGGDFYLRLCLGKNGVFDGVFQRRGAPPLQLPRV
CTFRFPSTNIKITFTALSSSEKREKQEASESPVKAVQPHISPLTINIPDTMAHLISPLPSPTGTISAANSC
PSSPRGAGSSGYKVRVMPSDLNLMADNSQPENEKEASGGDSPKDDSKPPYSYAQLIVQAITMAPDKQLT
LNGIYTHITKNYPYYRTADKGWQNSIRHNLNLNRYFIKVPRSQEEPGKGSFWRIDPASESKLIEQAFRKR
RPRGVPCFRTPLGPLSSRSAPASPNHAGVLSAHSSGAQTPELSREGSPAPLEPEPGAAQPKLAVIQEAR
FAQSAPGSPLSSQPVLITVQRQLPQAIKPVYTYVATPVTTSTSQQPVVQTVHVVHQIPAVSVTSVAGLAP
ANTYTVSQAVVTPAAVLAPPKAEAEQENGDRHREVKVKEVIPAIGHATLGTASRIIQTAQTTPVQTVTIV
QQAPLQGHQLPIKTVTQNGTHVASVPTAVHGQVNNAAASPLHMLATHASASASLPTKRHNGDQPEQPELK
RIKTEDGEGIVIALSVDTPPAAVREKGVQN
    
```

TRTRPLEQKLISEEDLAANDILDYKDDDDKV

**Chromatograms:** [https://cdn.origene.com/chromatograms/mg3661\\_d03.zip](https://cdn.origene.com/chromatograms/mg3661_d03.zip)

**Restriction Sites:** SgfI-MluI

**Cloning Scheme:**



**ACCN:** NM\_004514

**ORF Size:** 1980 bp

**OTI Disclaimer:** The molecular sequence of this clone aligns with the gene accession number as a point of reference only. However, individual transcript sequences of the same gene can differ through naturally occurring variations (e.g. polymorphisms), each with its own valid existence. This clone is substantially in agreement with the reference, but a complete review of all prevailing variants is recommended prior to use. [More info](#)

**OTI Annotation:** This clone was engineered to express the complete ORF with an expression tag. Expression varies depending on the nature of the gene.

**Components:** The ORF clone is ion-exchange column purified and shipped in a 2D barcoded Matrix tube containing 10ug of transfection-ready, dried plasmid DNA (reconstitute with 100 ul of water).

**Reconstitution Method:**

1. Centrifuge at 5,000xg for 5min.
2. Carefully open the tube and add 100ul of sterile water to dissolve the DNA.
3. Close the tube and incubate for 10 minutes at room temperature.
4. Briefly vortex the tube and then do a quick spin (less than 5000xg) to concentrate the liquid at the bottom.
5. Store the suspended plasmid at -20°C. The DNA is stable for at least one year from date of shipping when stored at -20°C.

**RefSeq:** [NM\\_004514.4](#)

**RefSeq Size:** 5262 bp

**RefSeq ORF:** 1983 bp

**Locus ID:** 3607

**UniProt ID:** [Q01167](#)

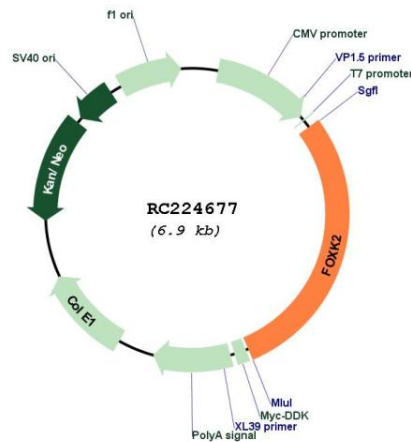
**Cytogenetics:** 17q25.3

**Protein Families:** Druggable Genome, Transcription Factors

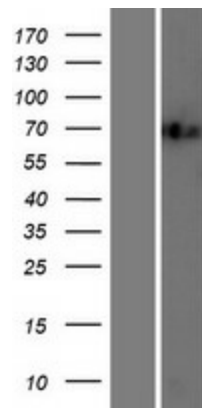
**MW:** 68.9 kDa

**Gene Summary:** The protein encoded by this gene contains a fork head DNA binding domain. This protein can bind to the purine-rich motifs of the HIV long terminal repeat (LTR), and to the similar purine-rich motif in the interleukin 2 (IL2) promoter. It may be involved in the regulation of viral and cellular promoter elements. [provided by RefSeq, Jul 2008]

## Product images:



Circular map for RC224677



Western blot validation of overexpression lysate (Cat# [LY417940]) using anti-DDK antibody (Cat# [TA50011-100]). Left: Cell lysates from untransfected HEK293T cells; Right: Cell lysates from HEK293T cells transfected with RC224677 using transfection reagent MegaTran 2.0 (Cat# [TT210002]).