

## Product datasheet for **RC224676**

### ZNF572 (NM\_152412) Human Tagged ORF Clone

#### Product data:

Product Type:	Expression Plasmids
Product Name:	ZNF572 (NM_152412) Human Tagged ORF Clone
Tag:	Myc-DDK
Symbol:	ZNF572
Mammalian Cell Selection:	Neomycin
Vector:	pCMV6-Entry (PS100001)
E. coli Selection:	Kanamycin (25 ug/mL)



[View online »](#)

**ORF Nucleotide Sequence:**

>RC224676 ORF sequence  
 Red=Cloning site Blue=ORF Green=Tags(s)

TTTTGTAATACGACTCACTATAGGGCGGCCGGAATTCGTCGACTGGATCCGGTACCGAGGAGATCTGCC  
 GCC**CGGATCGCC**

ATGGAGCAAGAAAAAACTGTTGGTCTCAGATTCTAACAGCTTTATGGAGAGGGAGAGTTGAAAAAGCC  
 CTTTCACAGGAGATACAAGTATGAATAATTTGAAACTGTTACCACAATAATTCTAAGGCAGATAAACT  
 TAAAGAGAAACCTTCAGAAATGGTCTAAAAGACATAGACCACAACATTATAAGCATGAGGATGCAAAAAGAA  
 ATGCCACTGACATGGGTTCAAGATGAGATTTGGTGTCTGATTCTATGAGAGTGTGGCAAGTCAGAGA  
 ATTGGGAAATTTTATAGCTAAAGAGGAGGAAAAACCAATCACCAGGAATGGGACTCAGGAGAACATAC  
 CAATGCCTGTGTCCAGCAGAATTCATCCTTTGTAGACAGACCCTATAAATGTTCCGAATTTGGAAAAGC  
 TTCAGTAATAGTTCTCATTTGCGTACTCACCAGAGGCCACTCAGGAGAAAAGCCTTATAAATGCTCTG  
 AGTGTGCAAAATGTTTTGTAACAGTTCTCACCTGATTCAGCATCTAAGAATGCACACAGGAGAGAAGCC  
 CTACCAGTGTGGTGAATGTGGGAAAAGCTTCAGCAATACCTCCCATCTTATTATCCATGAGAGAACTCAC  
 ACGGGAGAGAAAACCTACAATGTCCCGAGTGTGGGAAGAGATTCAGCAGCAGCTCTCACCTTATTCAGC  
 ATCACAGATCACATACAGGTGAAAAACCATATGAATGTTCTGTCTGCGGAAAAGGCTTCAGTCACAGCTA  
 TGTCTAATAGAACATCAGAGGACTCACACTGGAGAAAAACCTTATAAGTGCCCTGATTGTGGGAAGAGT  
 TTAGTCAGAGTTCAGCCTCATTCGCCACCAGCGGACACACACAGGTGAGAAGCCCTACAATGTCTTG  
 AGTGTGAAAAAGCTTTGGTTGTAATTTACTCTAATAAAACATCAGAGAATACATACAGGAGAAAAAGCC  
 TTATCAATGTCCAGAATGTGGGAAGAATTTAGTCGAGTTCAAACCTTATTACACACAGAAAAATGCAC  
 ACAGGAGAGAAAATCCTATGAAAGTCTGAATATGAGGAAAAGTTGGGTCAGAAGTCAATGTGATAGAAG  
 AATGCAGAATCCAGTTAGGAGAGAAAACCATATAGATGTTGTGAATGTGGGAAGAGTTTTGGCCTTAGCTC  
 CCATCTCATTAGACATCAGAGAACACATACAGGAGAAAAACCTTACAGATGTTCTGAGTGTGAAAAACT  
 TTCAGTCAGAGTTCACCTGGTATTACCAAAGGACACATACAGGAGAGAAAACCTTATAAATGTCCTG  
 ATTGTGGTGAAGCTTCAGTCAGAGCTTTAACCTTATCAGGCACCGGAGGACCCACATAGGGGAAAAAC  
 TTACAAATGTACCAGCTGTGAGAAATGCTTCAGCAGAAGTGCCTACCTCAGTCAGCATCGGAAAATTCAC  
 GTAGAAAAGCCTTTTGTAGTCTCCGACGTTGGGATTTTCTCATGAATGGACTTGAAAAACTGTTTCAG  
 GGGAAATGCCCTTCATCTCTTCATTTCCGTCCTCAAATTCATCTTCC

**ACGCGT**ACGCGGCCGCTCGAGCAGAAACTCATCTCAGAAGAGGATCTGGCAGCAAATGATATCCTGGATT  
 ACAAGGATGACGACGATAAGGTTTAA

**Protein Sequence:**

>RC224676 protein sequence  
 Red=Cloning site Green=Tags(s)

MEQEKKLLVSDSNSFMERESLKSPTGDTSMNNLETVHHNNSKADKLEKPSSEWSKRHRPQHYKHEDA  
 MPLTWVQDEIWCHDSYEDGKSENWGNFIAKEEEKPNHQEWDGSEHTNACVQNSSFVDRPYKCECCKWS  
 FSNSSHLRTHQRTHSGEKPYKCECAKCFCNSSHLIQHLRMHTGEKPYQCCEGKSFNTSHLIIHERTH  
 TGEKPYKPECGKRFSSSSHLIQHRSHTGEKPYECSVCGKGFSHSYVLIHQRTHTGEKPYKPCDCGKS  
 FSQSSSLIRHQRTHTEKPYKCLECEKSFSGNSTLIKHQRIHTGEKPYQCPECGKNFSRSSNLITHQKMH  
 TGEKSYESSEYEEESLQNCNVIEECRIQLGEKPYRCECGKSFGLSSHLIRHQRTHTEKPYRCECCKWT  
 FSQSSTLVIHQRTHTGEKPYKPCDCGESFSQSFNLIHRHRTHIGEKPYPKCTSEKCFSRSAVLSQHRKIH  
 VEKPFESPDVGFPHWETWKNCSGEMPFISSFSVSNSSS

**TRTRPLEQKLI**SEEDLAANDILDYKDDDDKV

**Chromatograms:**

[https://cdn.origene.com/chromatograms/mk6606\\_g12.zip](https://cdn.origene.com/chromatograms/mk6606_g12.zip)

**Restriction Sites:**

Sgfl-Mlul

**Cloning Scheme:**


**ACCN:** NM\_152412

**ORF Size:** 1587 bp

**OTI Disclaimer:** The molecular sequence of this clone aligns with the gene accession number as a point of reference only. However, individual transcript sequences of the same gene can differ through naturally occurring variations (e.g. polymorphisms), each with its own valid existence. This clone is substantially in agreement with the reference, but a complete review of all prevailing variants is recommended prior to use. [More info](#)

**OTI Annotation:** This clone was engineered to express the complete ORF with an expression tag. Expression varies depending on the nature of the gene.

**Components:** The ORF clone is ion-exchange column purified and shipped in a 2D barcoded Matrix tube containing 10ug of transfection-ready, dried plasmid DNA (reconstitute with 100 ul of water).

- Reconstitution Method:**
1. Centrifuge at 5,000xg for 5min.
  2. Carefully open the tube and add 100ul of sterile water to dissolve the DNA.
  3. Close the tube and incubate for 10 minutes at room temperature.
  4. Briefly vortex the tube and then do a quick spin (less than 5000xg) to concentrate the liquid at the bottom.
  5. Store the suspended plasmid at -20°C. The DNA is stable for at least one year from date of shipping when stored at -20°C.

**RefSeq:** [NM\\_152412.3](#)

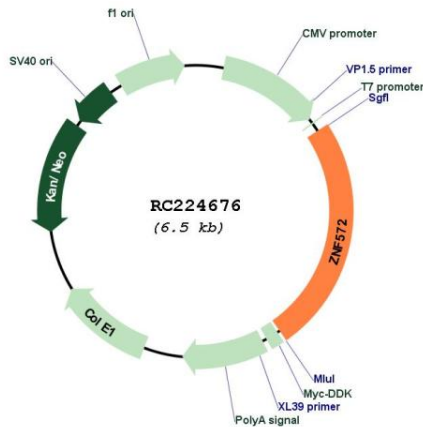
**RefSeq Size:** 3276 bp

**RefSeq ORF:** 1590 bp

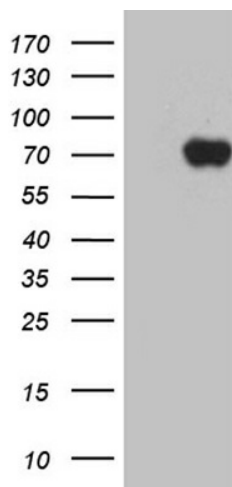
**Locus ID:** 137209

**UniProt ID:** [Q7Z3I7](#)

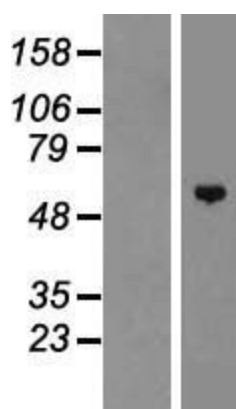
**Cytogenetics:** 8q24.13  
**Domains:** zf-C2H2  
**MW:** 61.2 kDa  
**Gene Summary:** May be involved in transcriptional regulation.[UniProtKB/Swiss-Prot Function]

**Product images:**


Circular map for RC224676



HEK293T cells were transfected with the pCMV6-ENTRY control (Cat# [PS100001], Left lane) or pCMV6-ENTRY ZNF572 (Cat# RC224676, Right lane) cDNA for 48 hrs and lysed. Equivalent amounts of cell lysates (5 ug per lane) were separated by SDS-PAGE and immunoblotted with anti-ZNF572 (Cat# [TA811667])(1:500). Positive lysates [LY407580] (100ug) and [LC407580] (20ug) can be purchased separately from OriGene.



Western blot validation of overexpression lysate (Cat# [LY407580]) using anti-DDK antibody (Cat# [TA50011-100]). Left: Cell lysates from untransfected HEK293T cells; Right: Cell lysates from HEK293T cells transfected with RC224676 using transfection reagent MegaTran 2.0 (Cat# [TT210002]).