

## Product datasheet for **RC224675**

### RPL21 (NM\_000982) Human Tagged ORF Clone

#### Product data:

**Product Type:** Expression Plasmids  
**Product Name:** RPL21 (NM\_000982) Human Tagged ORF Clone  
**Tag:** Myc-DDK  
**Symbol:** RPL21  
**Synonyms:** HYPT12; L21  
**Mammalian Cell Selection:** Neomycin  
**Vector:** pCMV6-Entry (PS100001)  
**E. coli Selection:** Kanamycin (25 ug/mL)  
**ORF Nucleotide Sequence:** >RC224675 representing NM\_000982  
**Red=Cloning site Blue=ORF Green=Tags(s)**

TTTTGTAATACGACTCACTATAGGGCGGCCGGAATTCGTCGACTGGATCCGGTACCGAGGAGATCTGCC  
GCC**CGGATCGCC**

ATGACGAACACAAAGGGAAAGAGGAGAGGCACCCGATATATGTTCTCTAGGCCTTTAGAAAACATGGAG  
TTGTTCCCTTTGGCCACATATATGCGAATCTATAAGAAAGGTGATATTGTAGACATCAAGGGAATGGGTAC  
TGTTCAAAAAGGAATGCCCCACAAGTGTACCATGGCAAACTGGAAGAGTCTACAATGTTACCCAGCAT  
GCTGTTGGCATTGTTGTAACAAACAAGTTAAGGGCAAGATTCTTGCCAAGAGAATTAATGTGCGTATTG  
AGCACATTAAGCACTCTAAGAGCCGAGATAGCTTCCTGAAACGTGTGAAGGAAAATGATCAGAAAAAGAA  
AGAAGCCAAAGAGAAAGGTACCTGGGTTCAACTAAAGCGCCAGCCTGCTCCACCCAGAGAAGCACACTTT  
GTGAGAACCAATGGGAAGGAGCCTGAGCTGCTGGAACCTATTCCTATGAATTCATGGCA

**ACGCGT**ACGCGGCCGCTCGAGCAGAACTCATCTCAGAAGAGGATCTGGCAGCAAATGATATCCTGGATT  
ACAAGGATGACGACGATAAGGTTTAA

**Protein Sequence:** >RC224675 representing NM\_000982  
**Red=Cloning site Green=Tags(s)**  
MTNTKGKRRGTRYMFSRPFKHHGVVPLATYMRIYKKGDIVDIKMGTVQKGMPHKCYHGKTGRVYVNTQH  
AVGIIVNKKVQKILAKRINVRIEHIKHSKSRDSFLKRVKENDQKKKEAKEKGTWVQLKRQPAPPREAHF  
VRTNGKEPELLEPIPYEFMA

**TR**TRPLEQKLISEEDLAANDILDYKDDDDKV

**Chromatograms:** [https://cdn.origene.com/chromatograms/mk6557\\_a07.zip](https://cdn.origene.com/chromatograms/mk6557_a07.zip)



[View online >](#)

Restriction Sites: SgfI-MluI

Cloning Scheme:



ACCN: NM\_000982

ORF Size: 480 bp

OTI Disclaimer: The molecular sequence of this clone aligns with the gene accession number as a point of reference only. However, individual transcript sequences of the same gene can differ through naturally occurring variations (e.g. polymorphisms), each with its own valid existence. This clone is substantially in agreement with the reference, but a complete review of all prevailing variants is recommended prior to use. [More info](#)

OTI Annotation: This clone was engineered to express the complete ORF with an expression tag. Expression varies depending on the nature of the gene.

Components: The ORF clone is ion-exchange column purified and shipped in a 2D barcoded Matrix tube containing 10ug of transfection-ready, dried plasmid DNA (reconstitute with 100 ul of water).

- Reconstitution Method:
1. Centrifuge at 5,000xg for 5min.
  2. Carefully open the tube and add 100ul of sterile water to dissolve the DNA.
  3. Close the tube and incubate for 10 minutes at room temperature.
  4. Briefly vortex the tube and then do a quick spin (less than 5000xg) to concentrate the liquid at the bottom.
  5. Store the suspended plasmid at -20°C. The DNA is stable for at least one year from date of shipping when stored at -20°C.

RefSeq: [NM\\_000982.3](#)

RefSeq Size: 568 bp

RefSeq ORF: 483 bp

Locus ID: 6144

UniProt ID: [P46778](#)

Cytogenetics: 13q12.2

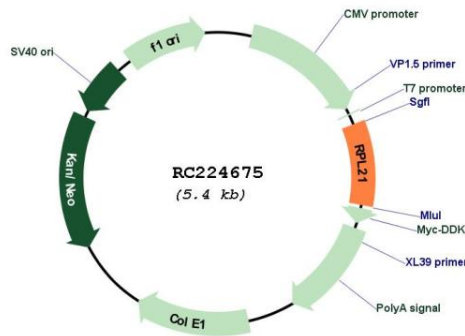
Domains: Ribosomal\_L21e

Protein Pathways: Ribosome

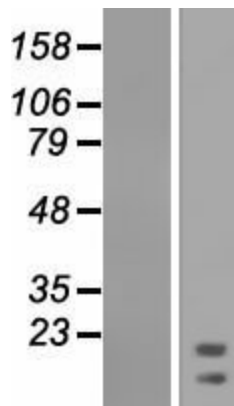
MW: 18.4 kDa

**Gene Summary:** Ribosomes, the organelles that catalyze protein synthesis, consist of a small 40S subunit and a large 60S subunit. Together these subunits are composed of 4 RNA species and approximately 80 structurally distinct proteins. This gene encodes a ribosomal protein that is a component of the 60S subunit. The protein belongs to the L21E family of ribosomal proteins. It is located in the cytoplasm. As is typical for genes encoding ribosomal proteins, there are multiple processed pseudogenes of this gene dispersed through the genome. [provided by RefSeq, Jul 2008]

**Product images:**



Circular map for RC224675



Western blot validation of overexpression lysate (Cat# [LY424412]) using anti-DDK antibody (Cat# [TA50011-100]). Left: Cell lysates from untransfected HEK293T cells; Right: Cell lysates from HEK293T cells transfected with RC224675 using transfection reagent MegaTran 2.0 (Cat# [TT210002]).